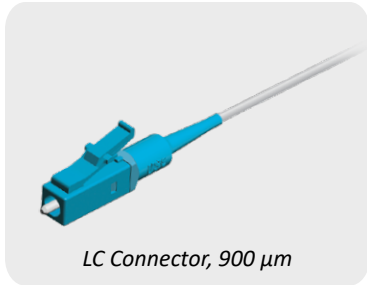


ELiMENT[®] LC Connectors

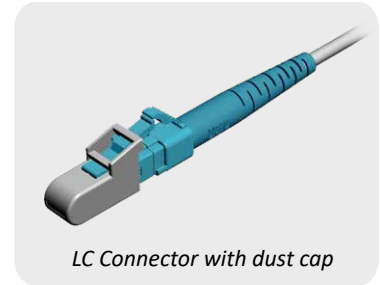
US Conec offers a high performance single fiber LC connector that exceeds GR 326-CORE, Issue 4 requirements. US Conec LC ferrules have a flat end face and are fully compliant to TIA/EIA-604-10B, IEC 61754-20, RoHS2 and REACH 169 directives.



LC Connector, 900 μ m



LC Connector, 2.0mm



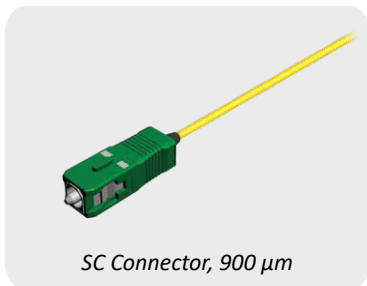
LC Connector with dust cap

Features:

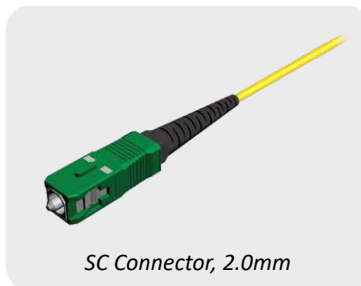
- MM, SM, and APC
- 900 μ m and 1.6/2.0mm cable boots
- One-piece tunable connector body
- Yellow and white heat shrinks available
- Meets IEC Attenuation Grade B random mating requirements (0.12 dB mean, 0.25 dB maximum for \geq 97% of the connectors)

ELiMENT[®] SC Connectors

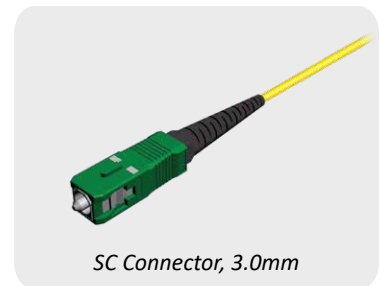
US Conec offers a one-piece SC connector that exceeds GR 326-CORE, Issue 4 requirements. US Conec singlemode and multi-mode 2.5mm diameter ferrules have a pre-radiused end face, meet TIA/EIA-604-3B, IEC 61754-4, and are compliant with RoHS2 and REACH 169 directives.



SC Connector, 900 μ m



SC Connector, 2.0mm



SC Connector, 3.0mm

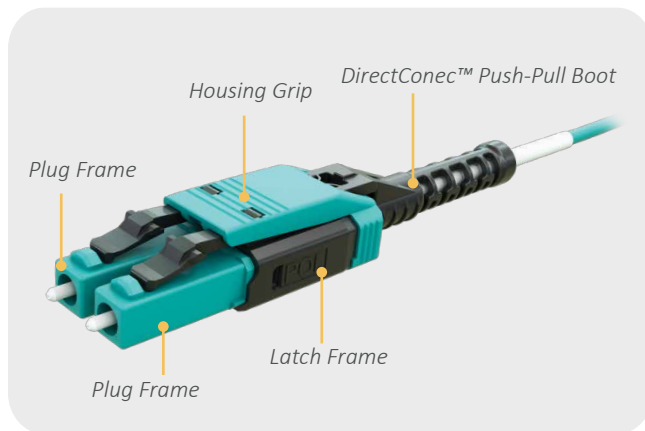
Features:

- MM, SM, and APC
- 900 μ m, 2.0mm and 3.0mm cable boots
- One-piece body design
- Meets IEC Attenuation Grade B random mating requirements (0.12 dB mean, 0.25 dB maximum for \geq 97% of the connectors)

ELiMENT® Duplex LC Uniboot

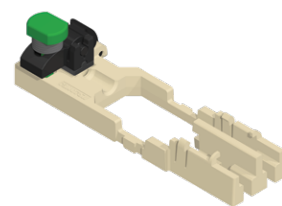
US Conec's ELiMENT® Duplex LC Uniboot is a high performance two-in-one LC connector that provides quick and easy toolless polarity reversal. The Duplex LC Uniboot reduces internal fiber damage by limiting fiber rotation to 180 degrees while eliminating exposed fibers during polarity reversal.

The redesigned low profile housing of the Duplex LC Uniboot is designed for high density applications. When maximizing panel density, the adapters can be stacked and the connector can be disconnected by grasping the sides of the housing or by using the DirectConec™ push-pull boot. DirectConec™ push-pull technology provides access to the connector for effortless insertion and extraction.

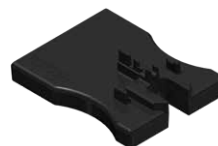


Features:

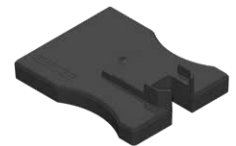
- PC and APC Uniboot connectors are polished as duplex connectors
- No tool required for polarity reversal
- Color coded polarity window clearly visible
- Engineered installation tools designed to increase operator output, reduce scrap, and improve first-time yields
- Low profile design and DirectConec™ push-pull boot for high density applications
- 2mm and 3mm cable options available for MM, SM, and APC applications
- Meets IEC Attenuation Grade B random mating requirements (0.12 dB mean, 0.25 dB maximum for ≥ 97% of the connectors)



LC Uniboot Curing Fixture



LC Uniboot Gear Installation Tool



LC Uniboot Body Alignment Tool