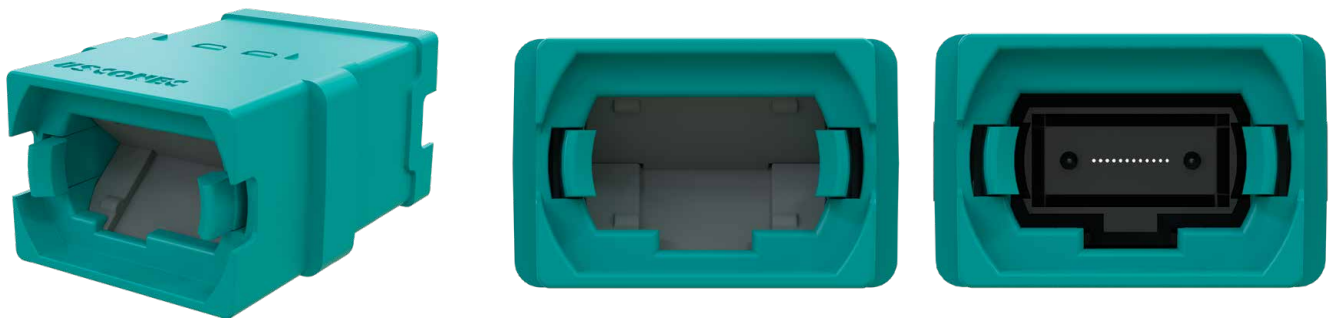


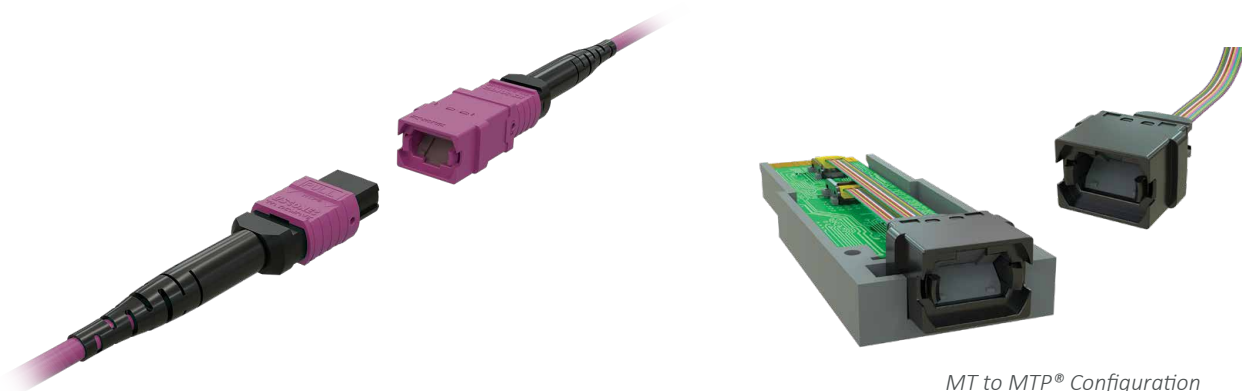
MTP® Shuttered Adapters

US Conec is expanding the extensive line of MPO single port bulkhead adapters. Designed to further minimize dust and debris propagation, the new MTP® shuttered adapter offering incorporates internal shuttered doors which do not contact the MT ferrule during mating and unmating.



Features:

- One hand connector insertion and removal
- Dust protective doors that close automatically with connector removal
- Connector housing contacts door bumper during connector insertion
- Dissipative shutter door material
- Full and reduced flange mounting configurations
- Aligned and opposed key
- MPO (TIA FOCIS 5) and MPO-16 (TIA FOCIS 18) compliant
- SC footprint for use with existing panel cutouts
- Tx/Rx interface variants



MT to MTP® Configuration