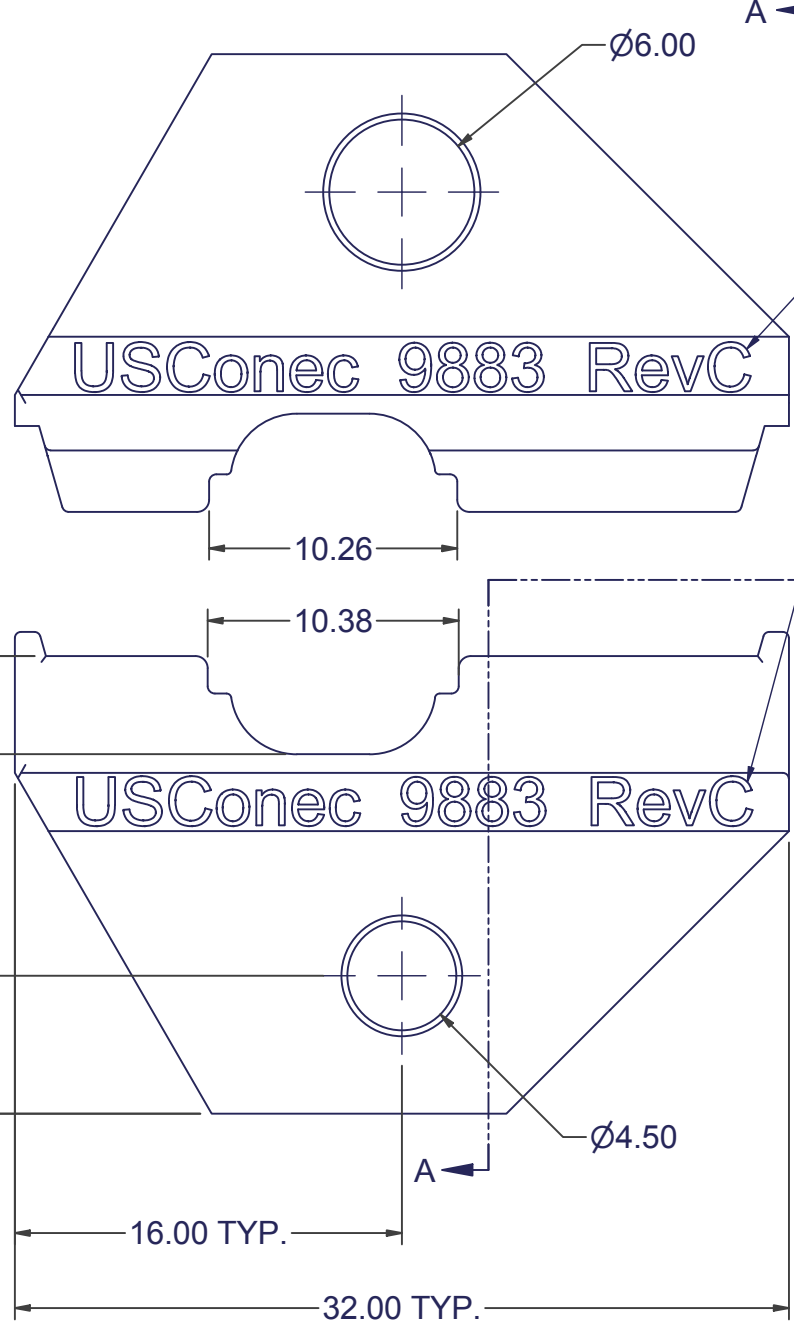
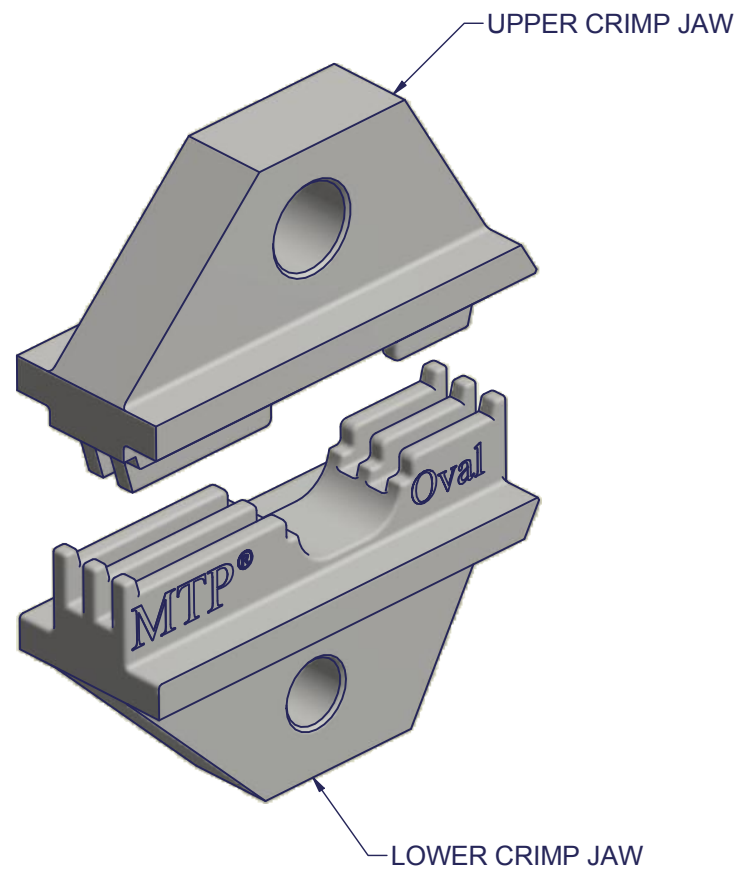
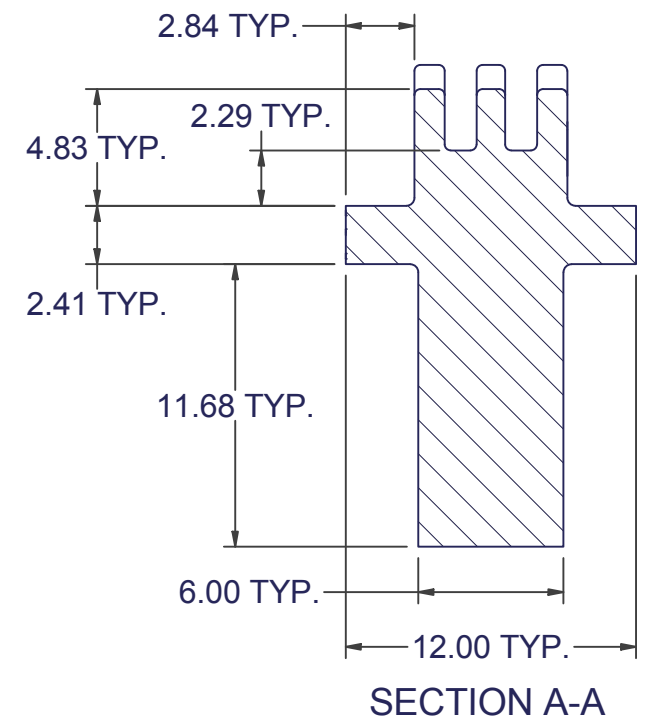


5.6



ENGINEERING  
DRAWING REVISION



SECTION A-A

▲ DENOTES CRITICAL DIMENSION

**NOTE:**

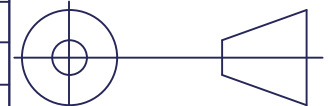
1. EXCEPT FOR HOLE DIAMETERS AND CRIMP AREA WIDTHS,  
ALL DIMENSIONS SHOWN APPLY TO BOTH PIECES.

USCONEC LTD. PROPRIETARY			
THIS DOCUMENT AND THE ASSOCIATED DATA CONTAIN RESTRICTED INFORMATION THAT IS USCONEC LTD. PROPERTY. DISCLOSE OR DUPLICATE FOR OTHERS ONLY AS AUTHORIZED BY USCONEC LTD.			
<b>Material:</b>		N/A	
REV.	DATE	DESCRIPTION	ECN
A	11/3/08	INITIAL RELEASE	01076
B1	5/18/10	ADDED VIEW AND DIMS FOR CRIMP DIES IN CLOSED POSITION	01237
B2	10/4/12	ADDED LEFT-TO-RIGHT ALIGNMENT FEATURES; REVISED TITLE TO INCLUDE "MTP®, OVAL"; ADDED MARKINGS	01237
B	6/19/13	RELEASE	01237
C	8/10/20	ADDED "USCONEC", P/N, & REV MARKINGS	1237-my

**CUSTOMER  
DRAWING**

DIMENSIONS FOR REFERENCE  
ONLY

THIRD ANGLE PROJECTION



**METRIC/mm**



Hickory, NC  
800-769-0944  
www.usconec.com

**TITLE**  
**CRIMP JAW (DIE) SET,  
MTP®, OVAL**

SIZE	S&M Part No.:	DWG NO	REV
<b>B</b>	9883	<b>C9883</b>	<b>C</b>
SCALE	Drafter	Date:	SHEET
N.T.S.	<b>B. HENLEY</b>	11/3/2008	1 OF 1