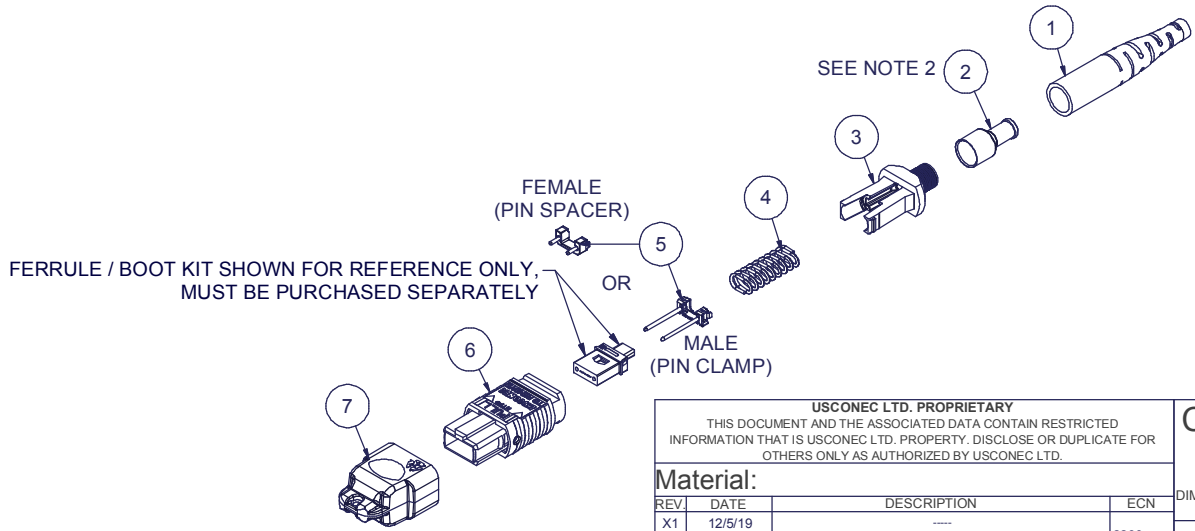


Parts List			
ITEM	DESCRIPTION	PART NUMBER	NOTES
1	BOOT, ROUND, MTP®	8041	
2	CRIMP BAND, 2.5 mm, MTP®, HEAT SHRINK	16425	NOTE 2
3	SPRING PUSH, UNIV., 3.0mm RND	19692	
4	SPRING, UNIVERSAL, 20N	17698	
5	PIN CLAMP or PIN SPACER	SEE KIT TABLE COLUMN A	NOTE 1
6	ASSEMBLY, HOUSING, MTP®	SEE KIT TABLE COLUMN B	
7	DUST CAP, MTP®	17242	

NOTES:

1. MALE CONNECTOR KIT HAS PIN CLAMP ASSEMBLY. FEMALE CONNECTOR KIT HAS FEMALE PIN SPACER.
2. HEAT-SHRINK TUBING RECOMMENDED FOR SECURING CRIMP BAND TO CABLE. HEAT-SHRINK TUBING NOT INCLUDED.

KIT P/N	KIT DESCRIPTION	PERFORMANCE	COLUMN A		COLUMN B
			PIN CLAMP/SPACER P/N	HSG ASSY P/N	HSG ASSY COLOR
21954	KIT, MTP®, UNIV., FEMALE, MM, 2.5mm RND, HSF, BEIGE	MM	17795	MTP-A12-11	BEIGE
21955	KIT, MTP®, UNIV., MALE, MM, 2.5mm RND, HSF, BEIGE	MM	17799	MTP-A12-11	BEIGE
21956	KIT, MTP®, UNIV., FEMALE, MM, 2.5mm RND, HSF, BLACK	MM	17795	MTP-A12-02	BLACK
21957	KIT, MTP®, UNIV., MALE, MM, 2.5mm RND, HSF, BLACK	MM	17799	MTP-A12-02	BLACK
21958	KIT, MTP®, UNIV., FEMALE, MM, 2.5mm RND, HSF, AQUA	MM or MM MTP Elite®	17795	7871	AQUA
21959	KIT, MTP®, UNIV., MALE, MM, 2.5mm RND, HSF, AQUA	MM	17799	7871	AQUA
21960	KIT, MTP®, UNIV., MALE, MM MTP Elite®, 2.5mm RND, HSF, AQUA	MM MTP Elite®	17800	7871	AQUA
21961	KIT, MTP®, UNIV., FEMALE, MM, 2.5mm RND, HSF, MAGENTA	MM or MM MTP Elite®	17795	13949	MAGENTA
21962	KIT, MTP®, UNIV., MALE, MM, 2.5mm RND, HSF, MAGENTA	MM	17799	13949	MAGENTA
21963	KIT, MTP®, UNIV., MALE, MM MTP Elite®, 2.5mm RND, HSF, MAGENTA	MM MTP Elite®	17800	13949	MAGENTA
21964	KIT, MTP®, UNIV., FEMALE, MM, 2.5mm RND, HSF, HEATHER VIOLET	MM or MM MTP Elite®	17795	16693	HEATHER VIOLET
21965	KIT, MTP®, UNIV., MALE, MM, 2.5mm RND, HSF, HEATHER VIOLET	MM	17799	16693	HEATHER VIOLET
21966	KIT, MTP®, UNIV., MALE, MM MTP Elite®, 2.5mm RND, HSF, HEATHER VIOLET	MM MTP Elite®	17800	16693	HEATHER VIOLET
21967	KIT, MTP®, UNIV., FEMALE, MM, 2.5mm RND, HSF, MUNSELL VIOLET	MM or MM MTP Elite®	17795	16791	MUNSELL VIOLET
21968	KIT, MTP®, UNIV., MALE, MM, 2.5mm RND, HSF, MUNSELL VIOLET	MM	17799	16791	MUNSELL VIOLET
21969	KIT, MTP®, UNIV., MALE, MM MTP Elite®, 2.5mm RND, HSF, MUNSELL VIOLET	MM MTP Elite®	17800	16791	MUNSELL VIOLET
21970	KIT, MTP®, UNIV., FEMALE, MM, 2.5mm RND, HSF, LIME	MM or MM MTP Elite®	17795	18829	LIME
21971	KIT, MTP®, UNIV., MALE, MM, 2.5mm RND, HSF, LIME	MM	17799	18829	LIME
21972	KIT, MTP®, UNIV., MALE, MM MTP Elite®, 2.5mm RND, HSF, LIME	MM MTP Elite®	17800	18829	LIME
21973	KIT, MTP®, UNIV., FEMALE, SM, 2.5mm RND, HSF, GREEN	SM	17795	16007	GREEN
21974	KIT, MTP®, UNIV., MALE, SM, 2.5mm RND, HSF, GREEN	SM	17800	16007	GREEN
21975	KIT, MTP®, UNIV., FEMALE, SM MTP Elite®, 2.5mm RND, HSF, YELLOW	SM MTP Elite®	17795	16918	YELLOW
21976	KIT, MTP®, UNIV., MALE, SM MTP Elite®, 2.5mm RND, HSF, YELLOW	SM MTP Elite®	17801	16918	YELLOW



USCONEC LTD. PROPRIETARY
THIS DOCUMENT AND THE ASSOCIATED DATA CONTAIN RESTRICTED INFORMATION THAT IS USCONEC LTD. PROPERTY. DISCLOSE OR DUPLICATE FOR OTHERS ONLY AS AUTHORIZED BY USCONEC LTD.

Material:

REV.	DATE	DESCRIPTION	ECN
X1	12/5/19	----	2260-mm
A	1/15/20	INITIAL RELEASE	

CUSTOMER DRAWING

DIMENSIONS FOR REFERENCE ONLY

THIRD ANGLE PROJECTION

METRIC/mm

▲ DENOTES CRITICAL DIMENSION

Hickory, NC
800-769-0944
www.usconec.com

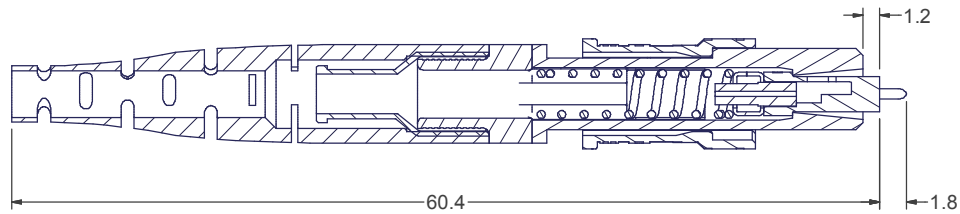
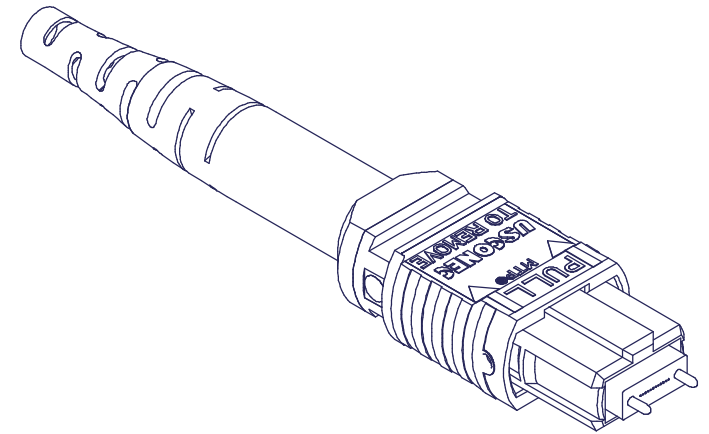
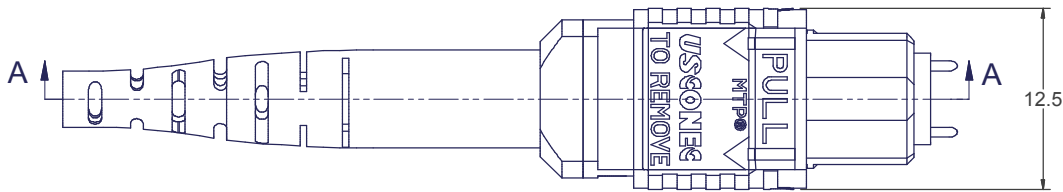
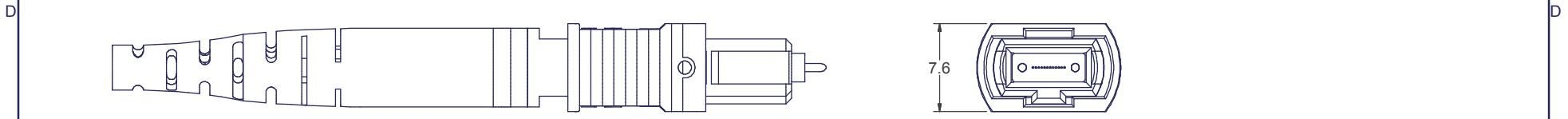
USCONEC

TITLE
KIT, MTP® CONN., UNIVERSAL, 2.3 - 2.7 mm
ROUND CABLE, HIGH SPRING FORCE

SIZE A3 S&M Part No.: SEE TABLE DWG NO. C21954 REV. A

SCALE N.T.S. Drafter M. McCROSKEY Date 12/5/2019 SHEET 1 OF 2

6 5 4 3 2 1



SECTION A-A

▲ DENOTES CRITICAL DIMENSION

USCONEC LTD. PROPRIETARY
THIS DOCUMENT AND THE ASSOCIATED DATA CONTAIN RESTRICTED INFORMATION THAT IS USCONEC LTD. PROPERTY. DISCLOSE OR DUPLICATE FOR OTHERS ONLY AS AUTHORIZED BY USCONEC LTD.

Material:

REV.	DATE	DESCRIPTION	ECN

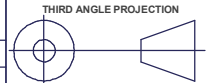
CUSTOMER DRAWING



Hickory, NC
800-769-0944
www.usconec.com

DIMENSIONS FOR REFERENCE ONLY

TITLE
KIT, MTP® CONN., UNIVERSAL, 2.3 - 2.7 mm
ROUND CABLE, HIGH SPRING FORCE



SIZE A3	S&M Part No.: SEE TABLE	DWG NO. C21954	REV A
-------------------	----------------------------	--------------------------	----------

METRIC/mm

SCALE N.T.S.	Drafter M. McCROSKEY	Date 12/5/2019	SHEET 2	OF 2
-----------------	-------------------------	-------------------	------------	------

6 5 4 3 2 1