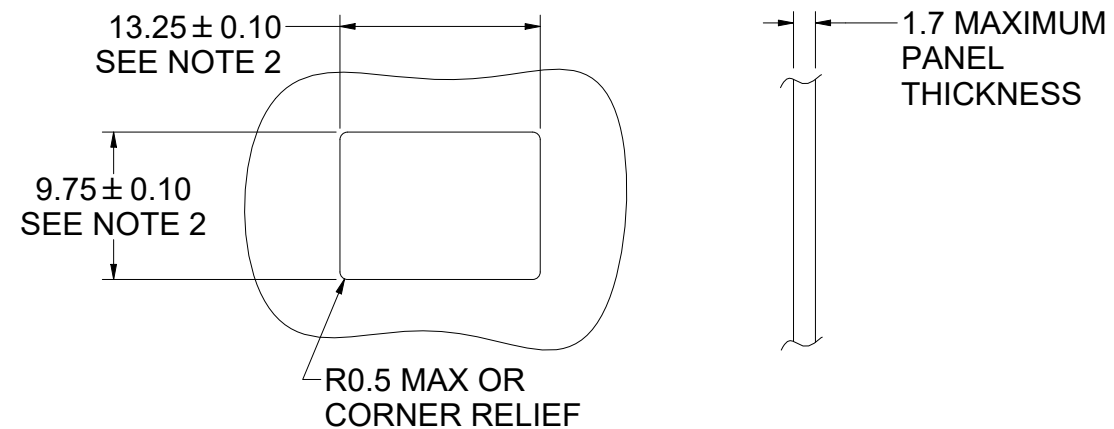
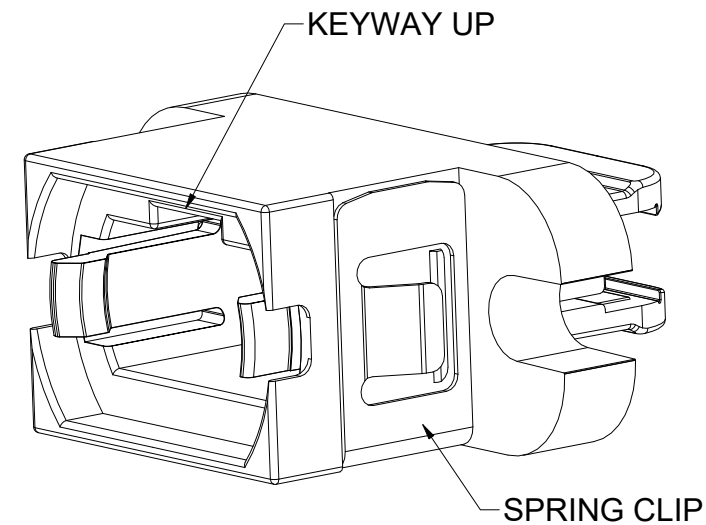
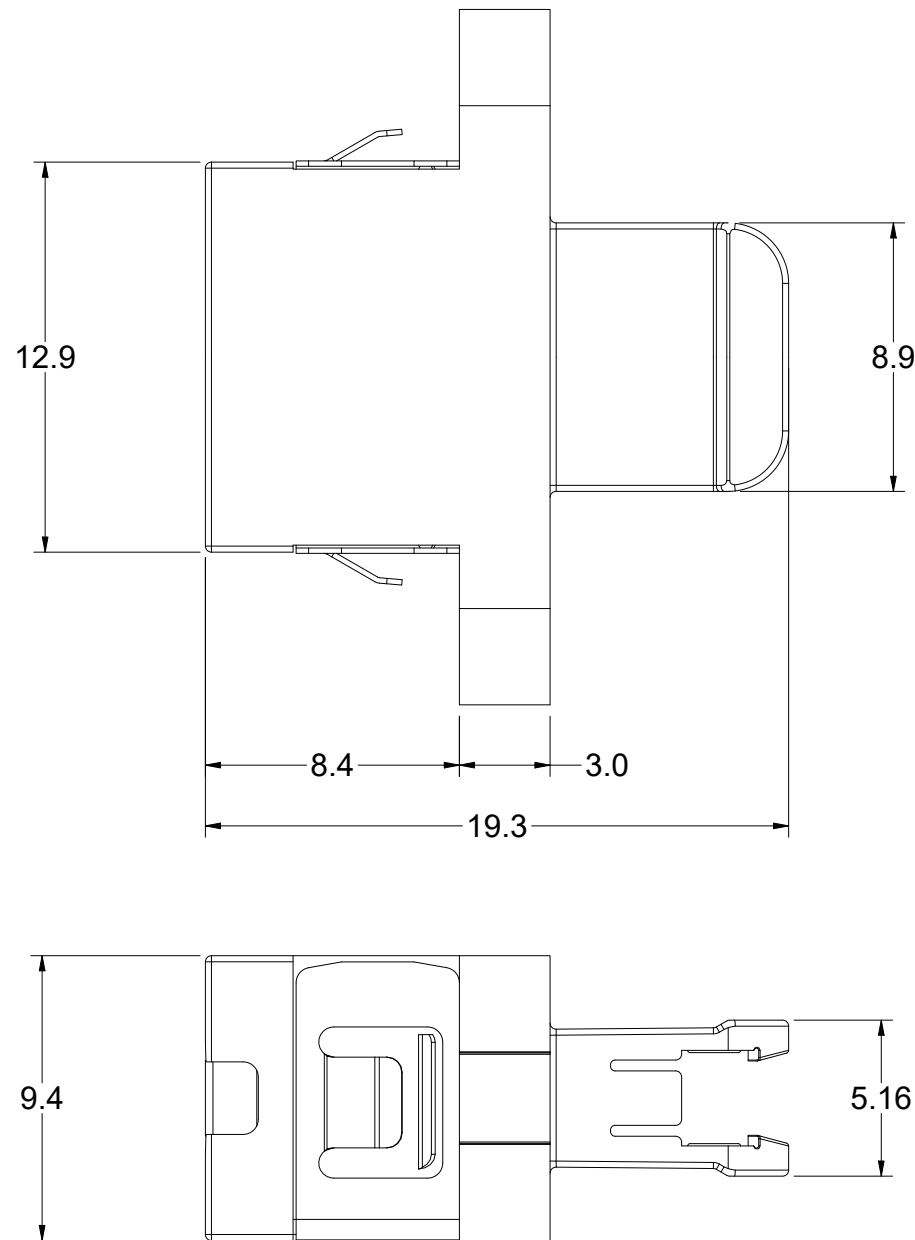
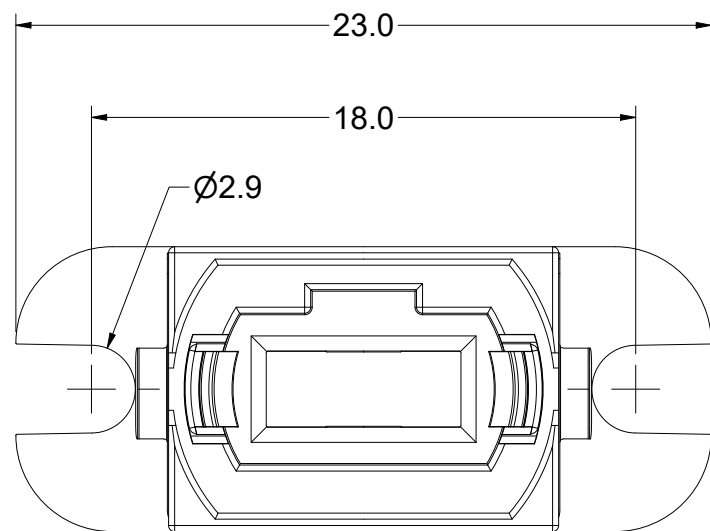


| P/N | COLOR |
|-------|-------|
| 21862 | BLACK |



RECOMMENDED MOUNTING CUTOUT

NOTES:

- ADAPTER BODY COLOR: SEE P/N TABLE
- COMPLIANT WITH USCONEC MT FERRULES.

| PART | MATERIAL |
|--------------|-----------------|
| ADAPTER BODY | POLYETHERIMIDE |
| SPRING CLIP | STAINLESS STEEL |

USCONEC LTD. PROPRIETARY
THIS DOCUMENT AND THE ASSOCIATED DATA CONTAIN RESTRICTED INFORMATION THAT IS USCONEC LTD. PROPERTY. DISCLOSE OR DUPLICATE FOR OTHERS ONLY AS AUTHORIZED BY USCONEC LTD.

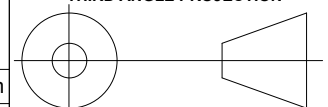
Material: SEE TABLE AT LEFT

| REV. | DATE | DESCRIPTION | ECN |
|------|----------|--------------------------------|---------|
| X1 | 10/22/19 | --- | 2245-my |
| X2 | 11/18/19 | ADDED MOUNTING CUTOUT & NOTE 2 | 2249-my |
| A | 11/26/19 | INITIAL RELEASE | |
| B | 10/7/24 | REMOVED WHITE MARK | 2708-mm |

CUSTOMER DRAWING

DIMENSIONS FOR REFERENCE ONLY

THIRD ANGLE PROJECTION



METRIC/mm

▲ DENOTES CRITICAL DIMENSION

USCONEC Hickory, NC
800-769-0944
www.usconec.com

TITLE
ADAPTER W/ CLIP, MT TO MTP®, FULL FLANGE, SC FOOTPRINT

| | | | |
|------------------|----------------------------|--------------------------|--------------|
| SIZE B | S&M Part No.: SEE TABLE | DWG NO. C21862 | REV B |
| SCALE N.T.S. | Drafter M. YOUNT | Date: 10/22/2019 | SHEET 1 OF 1 |