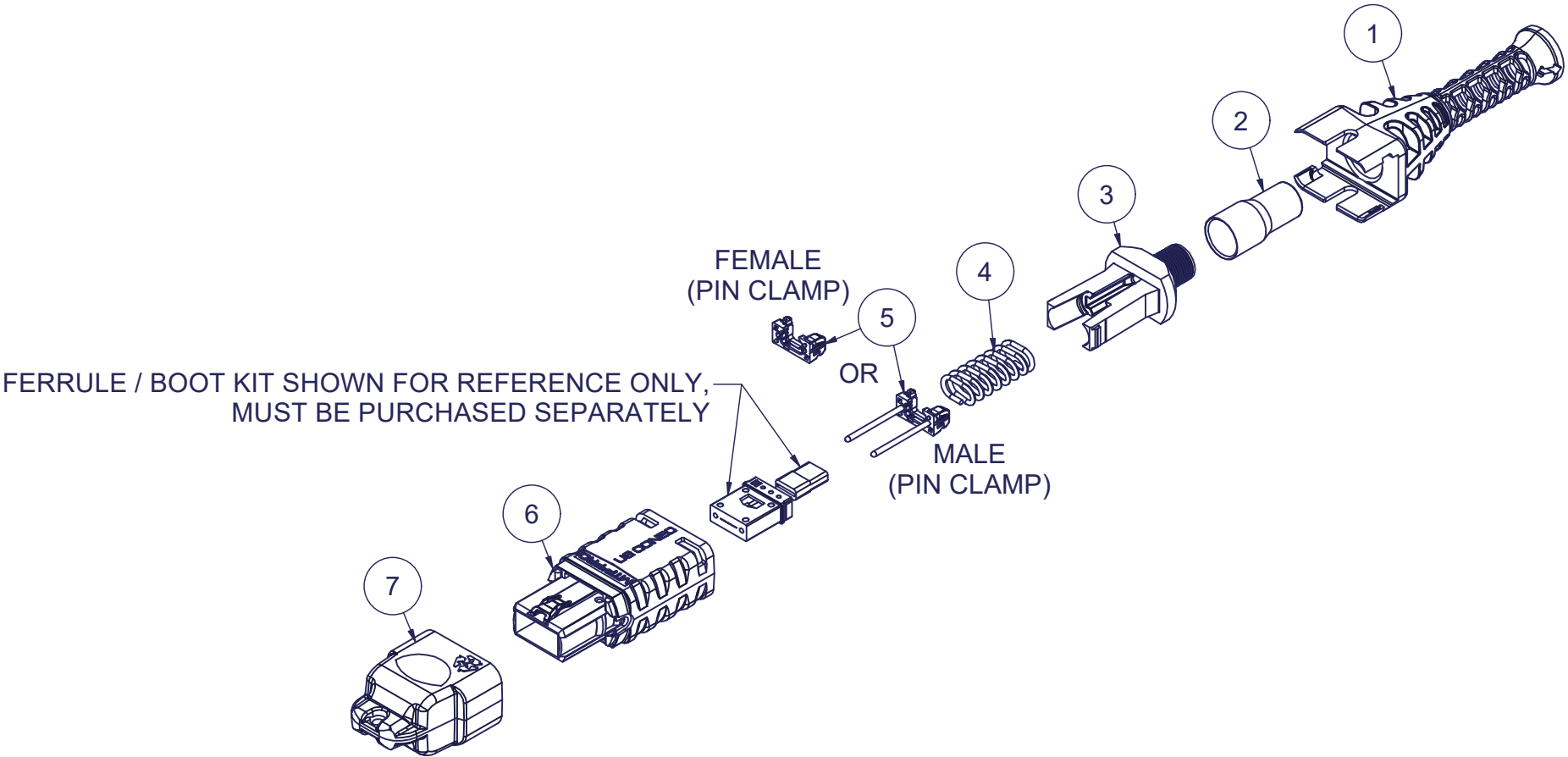


Parts List				
ITEM	DESCRIPTION	PART NUMBER	QTY	NOTES
1	BOOT, PUSH-PULL, MTP® PRO	21442	1	
2	CRIMP BAND, 3.0 ROUND, MTP®	15633	1	
3	SPRING PUSH, UNIV., 3.0mm RND	19692	1	
4	SPRING, UNIVERSAL, 20N	22515	1	
5	PIN CLAMP, MTP® PRO	SEE KIT TABLE COLUMN A	1	NOTE 1
6	HOUSING ASSY, MTP® PRO	SEE KIT TABLE COLUMN B	1	
7	DUST CAP, MTP®	17242	1	

KIT P/N	KIT DESCRIPTION	PERFORMANCE	COLUMN A	COLUMN B	HSG COLOR
			PIN CLAMP P/N	HSG ASSY P/N	
21783	KIT, MTP® PRO, FEMALE, MM MTP Elite®, 3.0 RND, W/ PUSH-PULL CBL BOOT, HSF, AQUA HSG	MM MTP Elite®	25084	18189	AQUA
21784	KIT, MTP® PRO, MALE, MM MTP Elite®, 3.0 RND, W/ PUSH-PULL CBL BOOT, HSF, AQUA HSG	MM MTP Elite®	25085	18189	AQUA
21785	KIT, MTP® PRO, FEMALE, MM MTP Elite®, 3.0 RND, W/ PUSH-PULL CBL BOOT, HSF, HEATHER VIOLET HSG	MM MTP Elite®	25084	18191	HEATHER VIOLET
21786	KIT, MTP® PRO, MALE, MM MTP Elite®, 3.0 RND, W/ PUSH-PULL CBL BOOT, HSF, HEATHER VIOLET HSG	MM MTP Elite®	25085	18191	HEATHER VIOLET
21787	KIT, MTP® PRO, FEMALE, MM MTP Elite®, 3.0 RND, W/ PUSH-PULL CBL BOOT, HSF, LIME HSG	MM MTP Elite®	25084	19486	LIME
21788	KIT, MTP® PRO, MALE, MM MTP Elite®, 3.0 RND, W/ PUSH-PULL CBL BOOT, HSF, LIME HSG	MM MTP Elite®	25085	19486	LIME
21789	KIT, MTP® PRO, FEMALE, SM MTP Elite®, 3.0 RND, W/ PUSH-PULL CBL BOOT, HSF, GREEN HSG	SM MTP Elite®	25084	18190	GREEN
21790	KIT, MTP® PRO, MALE, SM MTP Elite®, 3.0 RND, W/ PUSH-PULL CBL BOOT, HSF, GREEN HSG	SM MTP Elite®	25087	18190	GREEN

NOTES:

1. MALE CONNECTOR KIT HAS MALE PIN CLAMP ASSEMBLY, FEMALE CONNECTOR KIT HAS FEMALE PIN CLAMP ASSEMBLY.



USCONEC LTD. PROPRIETARY

THIS DOCUMENT AND THE ASSOCIATED DATA CONTAIN RESTRICTED INFORMATION THAT IS USCONEC LTD. PROPERTY. DISCLOSE OR DUPLICATE FOR OTHERS ONLY AS AUTHORIZED BY USCONEC LTD.

REV.	DATE	DESCRIPTION	ECN
X1	1/13/20	---	2265-mm
A	5/5/20	INITIAL RELEASE	2750-mm
B	4/9/25	PIN CLAMP CHGS: 25084 was 17861; 25085 was 19038; 25087 was 19039; SPRING CHG: 22515 was 17698	

CUSTOMER DRAWING

DIMENSIONS FOR REFERENCE ONLY

THIRD ANGLE PROJECTION

METRIC/mm

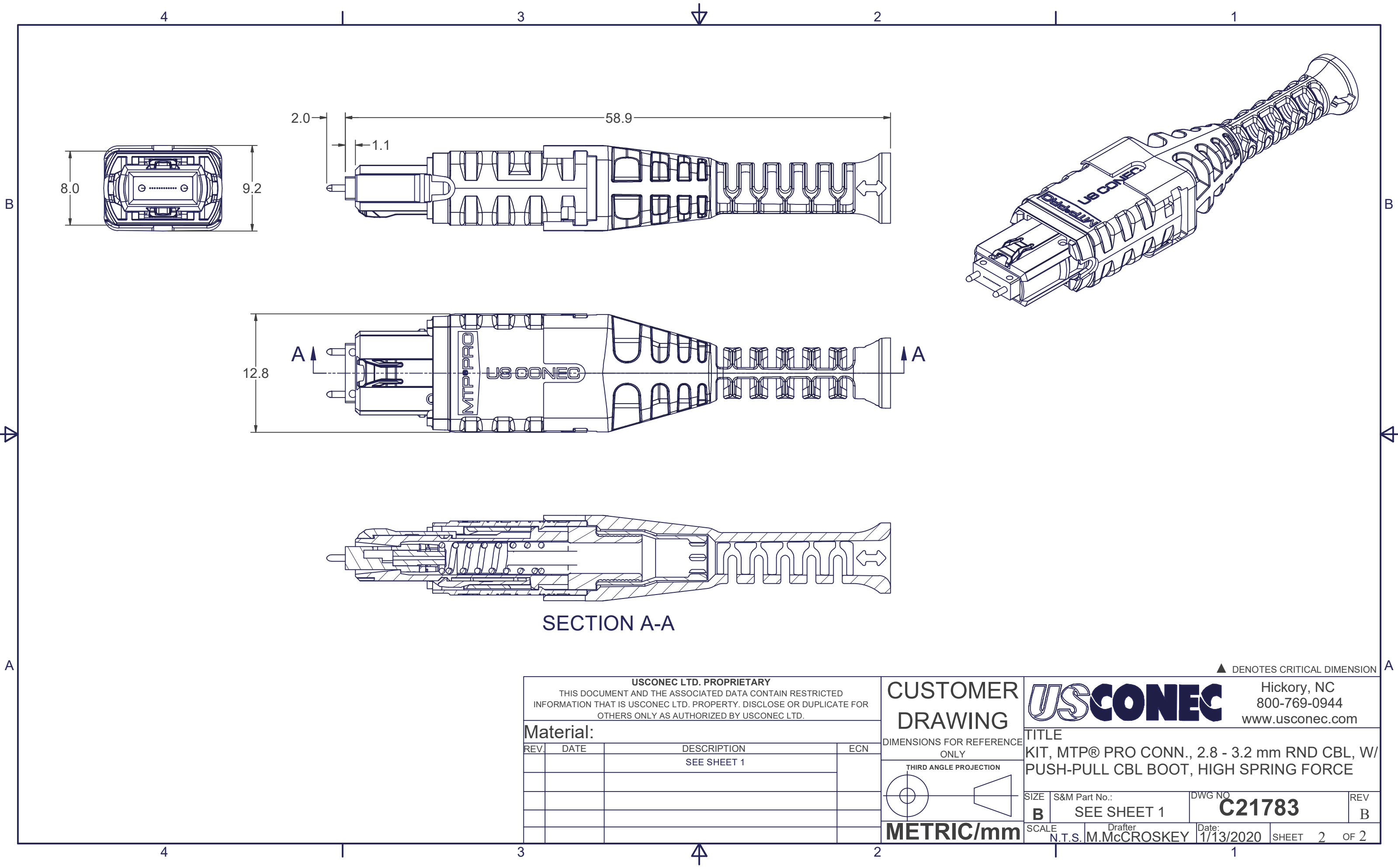
USCONEC

Hickory, NC
800-769-0944
www.usconec.com

TITLE

KIT, MTP® PRO CONN., 2.8 - 3.2 mm RND CBL, W/ PUSH-PULL CBL BOOT, HIGH SPRING FORCE

SIZE	S&M Part No.:	DWG NO	REV
B	SEE TABLE	C21783	B
SCALE	Drafter	Date:	SHEET
N.T.S.	M.McCROSKEY	1/13/2020	1 OF 2



SECTION A-A

USCONEC LTD. PROPRIETARY			
THIS DOCUMENT AND THE ASSOCIATED DATA CONTAIN RESTRICTED INFORMATION THAT IS USCONEC LTD. PROPERTY. DISCLOSE OR DUPLICATE FOR OTHERS ONLY AS AUTHORIZED BY USCONEC LTD.			
Material:			
REV.	DATE	DESCRIPTION	ECN
		SEE SHEET 1	

CUSTOMER
DRAWING

DIMENSIONS FOR REFERENCE
ONLY

THIRD ANGLE PROJECTION

METRIC/mm



Hickory, NC
800-769-0944
www.usconec.com

TITLE
KIT, MTP® PRO CONN., 2.8 - 3.2 mm RND CBL, W/
PUSH-PULL CBL BOOT, HIGH SPRING FORCE

SIZE B	S&M Part No.: SEE SHEET 1	DWG NO. C21783	REV B
SCALE N.T.S.	Drafter M.McCROSKEY	Date: 1/13/2020	SHEET 2 OF 2

▲ DENOTES CRITICAL DIMENSION