

4

Parts List

ITEM	DESCRIPTION	PART NUMBER	QTY	NOTES
1	BOOT, PUSH-PULL, MTP® PRO	21442	1	
2	CRIMP BAND, 3.0 ROUND, MTP®	15633	1	
3	SPRING PUSH, UNIV., 3.0mm RND	19692	1	
4	SPRING, UNIVERSAL, 9.8N, MTP®	17167	1	
5	PIN CLAMP, MTP® PRO	SEE KIT TABLE COLUMN A	1	NOTE 1
6	HOUSING ASSY, MTP® PRO	SEE KIT TABLE COLUMN B	1	
7	DUST CAP, MTP®	17242	1	

NOTES:  
  
1. MALE CONNECTOR KIT HAS MALE PIN CLAMP ASSEMBLY, FEMALE CONNECTOR KIT HAS FEMALE PIN CLAMP ASSEMBLY.

3

2

1

KIT P/N	KIT DESCRIPTION	PERFORMANCE	COLUMN A PIN CLAMP P/N	COLUMN B HSG ASSY P/N	HSG COLOR
21759	KIT, MTP® PRO, FEMALE, MM MTP Elite®, 3.0 RND CBL, W/ PUSH-PULL CBL BOOT, AQUA HSG	MM MTP Elite®	25084	18189	AQUA
21760	KIT, MTP® PRO, MALE, MM MTP Elite®, 3.0 RND CBL, W/ PUSH-PULL CBL BOOT, AQUA HSG	MM MTP Elite®	25085	18189	AQUA
21761	KIT, MTP® PRO, FEMALE, MM MTP Elite®, 3.0 RND CBL, W/ PUSH-PULL CBL BOOT, HEATHER VIOLET HSG	MM MTP Elite®	25084	18191	HEATHER VIOLET
21762	KIT, MTP® PRO, MALE, MM MTP Elite®, 3.0 RND CBL, W/ PUSH-PULL CBL BOOT, HEATHER VIOLET HSG	MM MTP Elite®	25085	18191	HEATHER VIOLET
21763	KIT, MTP® PRO, FEMALE, MM MTP Elite®, 3.0 RND CBL, W/ PUSH-PULL CBL BOOT, LIME HSG	MM MTP Elite®	25084	19486	LIME
21764	KIT, MTP® PRO, MALE, MM MTP Elite®, 3.0 RND CBL, W/ PUSH-PULL CBL BOOT, LIME HSG	MM MTP Elite®	25085	19486	LIME
21765	KIT, MTP® PRO, FEMALE, SM MTP Elite®, 3.0 RND CBL, W/ PUSH-PULL CBL BOOT, GREEN HSG	SM MTP Elite®	25084	18190	GREEN
21766	KIT, MTP® PRO, MALE, SM MTP Elite®, 3.0 RND CBL, W/ PUSH-PULL CBL BOOT, GREEN HSG	SM MTP Elite®	25087	18190	GREEN
25000	KIT, MTP® PRO, FEMALE, SM MTP Elite®, 3.0 RND CBL, W/ PUSH-PULL CBL BOOT, YELLOW HSG	SM MTP Elite®	25084	22173	YELLOW
25001	KIT, MTP® PRO, MALE, SM MTP Elite®, 3.0 RND CBL, W/ PUSH-PULL CBL BOOT, YELLOW HSG	SM MTP Elite®	25087	22173	YELLOW

FERRULE / BOOT KIT SHOWN FOR REFERENCE ONLY, MUST BE PURCHASED SEPARATELY

USCONEC LTD. PROPRIETARY

THIS DOCUMENT AND THE ASSOCIATED DATA CONTAIN RESTRICTED INFORMATION THAT IS USCONEC LTD. PROPERTY. DISCLOSE OR DUPLICATE FOR OTHERS ONLY AS AUTHORIZED BY USCONEC LTD.

Material:

REV.	DATE	DESCRIPTION	ECN
X1	1/13/20	---	2265-mm
A	5/5/20	INITIAL RELEASE	
B	10/10/23	ADDED KIT P/N's 25000 & 25001 OPTIONS; ADD'D 9.2 DIM ON SHEET 2	2750-mm
C	4/9/25	PIN CLAMP CHGS: 25084 was 17861; 25085 was 19038; 25087 was 19039	

CUSTOMER DRAWING

DIMENSIONS FOR REFERENCE ONLY

THIRD ANGLE PROJECTION

METRIC/mm

USCONEC

Hickory, NC  
800-769-0944  
www.usconec.com

TITLE

KIT, MTP® PRO CONN., 2.8 - 3.2 mm RND CBL, W/ PUSH-PULL CBL BOOT

SIZE

B

S&M Part No.:

SEE TABLE

DWG NO

C21759

REV

C

SCALE

N.T.S.

Drafter

M.McCROSKEY

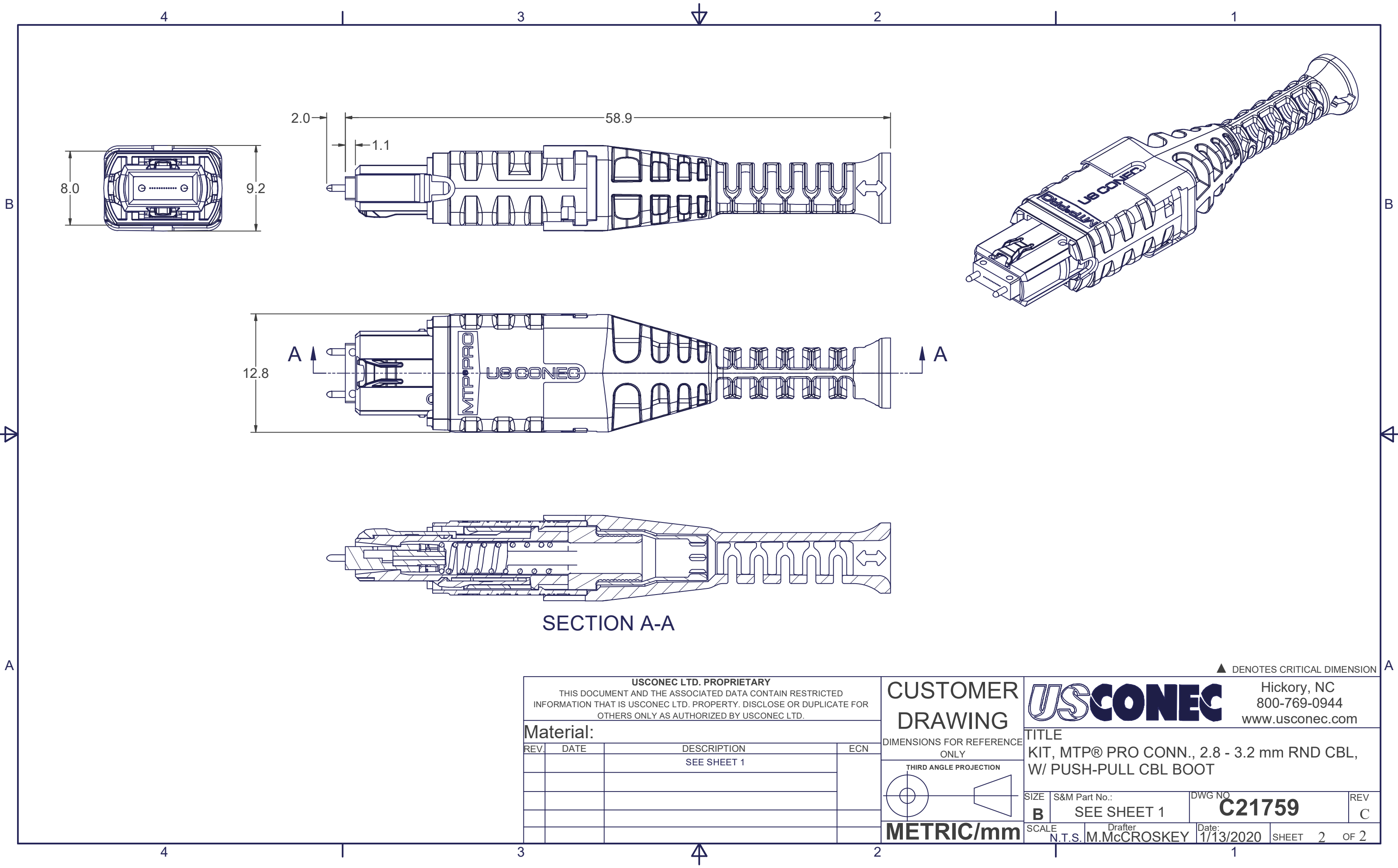
Date:

1/13/2020

SHEET

1

OF 2



US CONEC LTD. PROPRIETARY			
THIS DOCUMENT AND THE ASSOCIATED DATA CONTAIN RESTRICTED INFORMATION THAT IS US CONEC LTD. PROPERTY. DISCLOSE OR DUPLICATE FOR OTHERS ONLY AS AUTHORIZED BY US CONEC LTD.			
Material:			
REV.	DATE	DESCRIPTION	ECN
		SEE SHEET 1	

CUSTOMER  
DRAWING

DIMENSIONS FOR REFERENCE  
ONLY

THIRD ANGLE PROJECTION

METRIC/mm

Hickory, NC  
800-769-0944  
www.usconec.com

TITLE  
KIT, MTP® PRO CONN., 2.8 - 3.2 mm RND CBL,  
W/ PUSH-PULL CBL BOOT

SIZE <b>B</b>	S&M Part No.: SEE SHEET 1	DWG NO. <b>C21759</b>	REV <b>C</b>
SCALE N.T.S.	Drafter M.McCROSKEY	Date: 1/13/2020	SHEET 2 OF 2