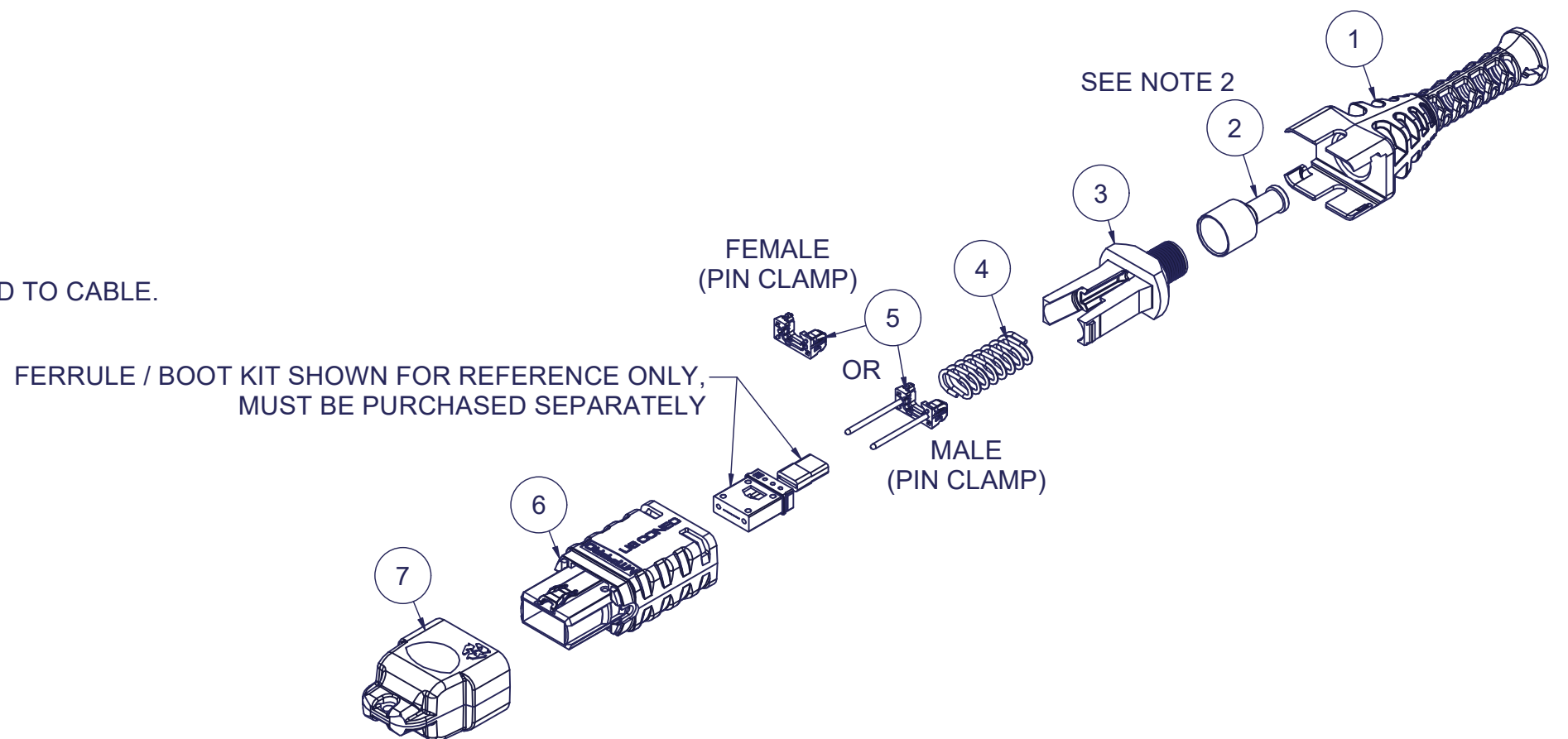


Parts List				
ITEM	DESCRIPTION	PART NUMBER	QTY	NOTES
1	BOOT, PUSH-PULL, MTP® PRO	21442	1	
2	CRIMP BAND, 2.0 mm, MTP®, HEAT SHRINK	16424	1	NOTE 2
3	SPRING PUSH, UNIV., 3.0mm RND	19692	1	
4	SPRING, UNIVERSAL, 9.8N, MTP®	17167	1	
5	PIN CLAMP, MTP® PRO	SEE KIT TABLE COLUMN A	1	NOTE 1
6	HOUSING ASSY, MTP® PRO	SEE KIT TABLE COLUMN B	1	
7	DUST CAP, MTP®	17242	1	

NOTES:

1. MALE CONNECTOR KIT HAS MALE PIN CLAMP ASSEMBLY,
FEMALE CONNECTOR KIT HAS FEMALE PIN CLAMP ASSEMBLY.
2. HEAT-SHRINK TUBING RECOMMENDED FOR SECURING CRIMP BAND TO CABLE.
HEAT-SHRINK TUBING NOT INCLUDED.

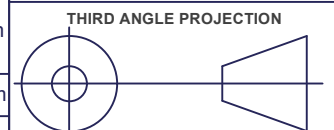
	3	2	1		
KIT P/N	KIT DESCRIPTION		PERFORMANCE	COLUMN A PIN CLAMP P/N	COLUMN B HSG ASSY P/N
21751	KIT, MTP® PRO, FEMALE, MM MTP Elite®, 2.5 RND, W/ PUSH-PULL CBL BOOT, AQUA HSG		MM MTP Elite®	25084	18189
21752	KIT, MTP® PRO, MALE, MM MTP Elite®, 2.5 RND, W/ PUSH-PULL CBL BOOT, AQUA HSG		MM MTP Elite®	25085	18189
21753	KIT, MTP® PRO, FEMALE, MM MTP Elite®, 2.5 RND, W/ PUSH-PULL CBL BOOT, HEATHER VIOLET HSG		MM MTP Elite®	25084	18191
21754	KIT, MTP® PRO, MALE, MM MTP Elite®, 2.5 RND, W/ PUSH-PULL CBL BOOT, HEATHER VIOLET HSG		MM MTP Elite®	25085	18191
21755	KIT, MTP® PRO, FEMALE, MM MTP Elite®, 2.5 RND, W/ PUSH-PULL CBL BOOT, LIME HSG		MM MTP Elite®	25084	19486
21756	KIT, MTP® PRO, MALE, MM MTP Elite®, 2.5 RND, W/ PUSH-PULL CBL BOOT, LIME HSG		MM MTP Elite®	25085	19486
21757	KIT, MTP® PRO, FEMALE, SM MTP Elite®, 2.5 RND, W/ PUSH-PULL CBL BOOT, GREEN HSG		SM MTP Elite®	25084	18190
21758	KIT, MTP® PRO, MALE, SM MTP Elite®, 2.5 RND, W/ PUSH-PULL CBL BOOT, GREEN HSG		SM MTP Elite®	25087	18190



USCONEC LTD. PROPRIETARY			
THIS DOCUMENT AND THE ASSOCIATED DATA CONTAIN RESTRICTED INFORMATION THAT IS USCONEC LTD. PROPERTY. DISCLOSE OR DUPLICATE FOR OTHERS ONLY AS AUTHORIZED BY USCONEC LTD.			
Material:			
REV.	DATE	DESCRIPTION	ECN
X1	1/13/20	---	2265-mm
A	5/5/20	INITIAL RELEASE	
B	4/9/25	PIN CLAMP CHGS: 25084 was 17861; 25085 was 19038; 25087 was 19039	2750-mm

CUSTOMER DRAWING

DIMENSIONS FOR REFERENCE
ONLY



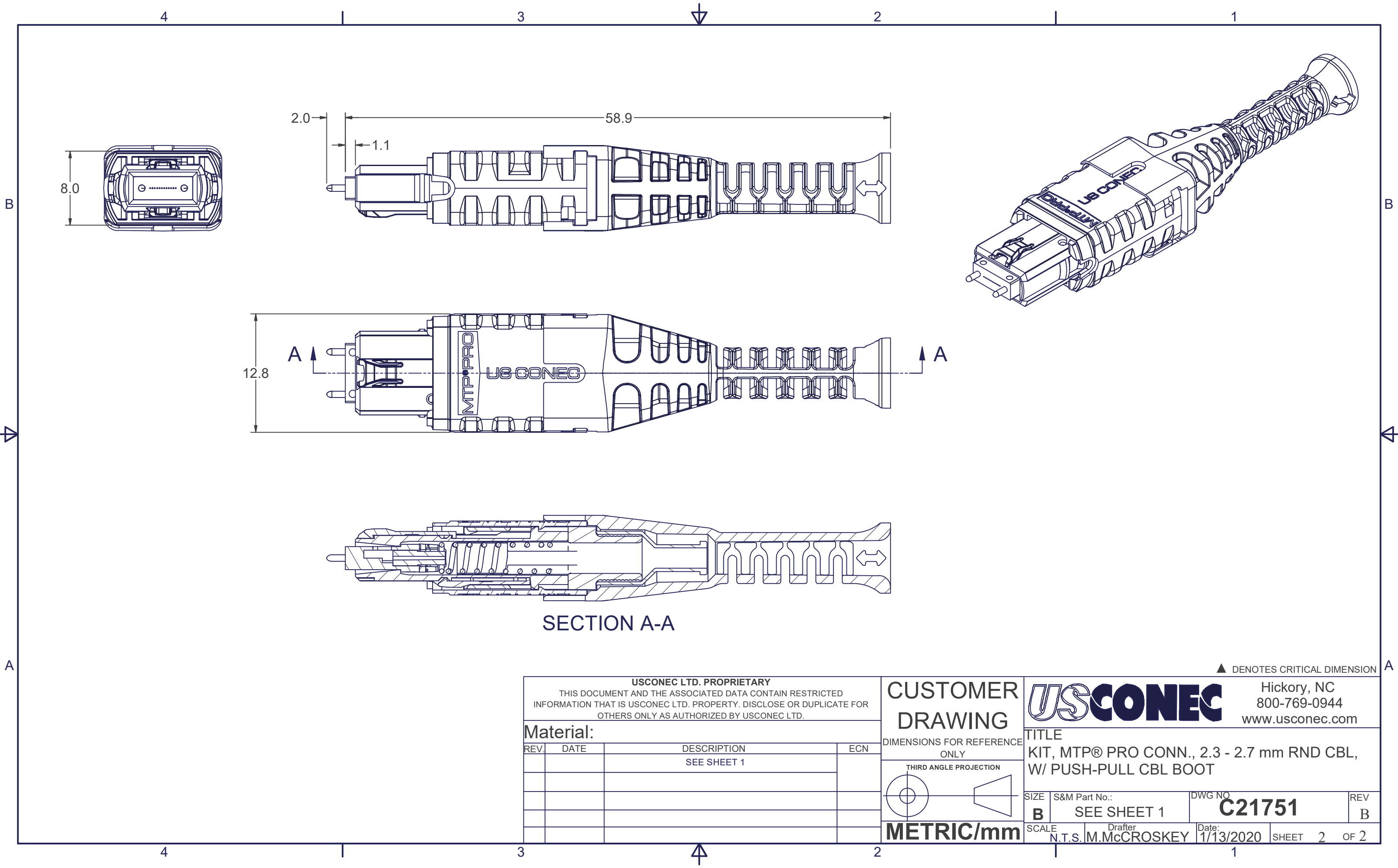
METRIC/mm



Hickory, NC
800-769-0944
www.usconec.com

TITLE
KIT, MTP® PRO CONN., 2.3 - 2.7 mm RND CBL, W/ PUSH-PULL CBL BOOT

SIZE B	S&M Part No.: SEE TABLE	DWG NO C21751	REV B
SCALE NIS	Drafter M McCROSKEY	Date: 1/13/2020	SHEET 1 OF 2



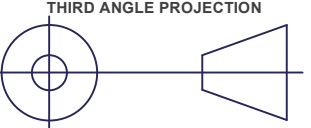
SECTION A-A

▲ DENOTES CRITICAL DIMENSION

US CONEC LTD. PROPRIETARY			
THIS DOCUMENT AND THE ASSOCIATED DATA CONTAIN RESTRICTED INFORMATION THAT IS US CONEC LTD. PROPERTY. DISCLOSE OR DUPLICATE FOR OTHERS ONLY AS AUTHORIZED BY US CONEC LTD.			
Material:			
REV.	DATE	DESCRIPTION	ECN
		SEE SHEET 1	

CUSTOMER
DRAWING

DIMENSIONS FOR REFERENCE
ONLY



METRIC/mm



Hickory, NC

800-769-0944

www.usconec.com

TITLE

KIT, MTP® PRO CONN., 2.3 - 2.7 mm RND CBL,
W/ PUSH-PULL CBL BOOT

<div>SIZE</div> <div>B</div>	<div>S&M Part No.:</div> <div>SEE SHEET 1</div>	<div>DWG NO</div> <div>C21751</div>	<div>REV</div> <div>B</div>
<div>SCALE</div> <div>N.T.S.</div>	<div>Drafter</div> <div>M.McCROSKEY</div>	<div>Date:</div> <div>1/13/2020</div>	<div>SHEET 2 OF 2</div>