

4

Parts List

ITEM	DESCRIPTION	PART NUMBER	QTY	NOTES
1	BOOT, PUSH-PULL, MTP® PRO	21442	1	
2	CRIMP BAND, 2.0 mm, MTP®, HEAT SHRINK	16424	1	NOTE 2
3	SPRING PUSH, UNIV., 3.0mm RND	19692	1	
4	SPRING, UNIVERSAL, 9.8N, MTP®	17167	1	
5	PIN CLAMP, MTP® PRO	SEE KIT TABLE COLUMN A	1	NOTE 1
6	HOUSING ASSY, MTP® PRO	SEE KIT TABLE COLUMN B	1	
7	DUST CAP, MTP®	17242	1	

NOTES:

1. MALE CONNECTOR KIT HAS MALE PIN CLAMP ASSEMBLY, FEMALE CONNECTOR KIT HAS FEMALE PIN CLAMP ASSEMBLY.

2. HEAT-SHRINK TUBING RECOMMENDED FOR SECURING CRIMP BAND TO CABLE. HEAT-SHRINK TUBING NOT INCLUDED.

3

2

1

KIT P/N	KIT DESCRIPTION	PERFORMANCE	COLUMN A PIN CLAMP P/N	COLUMN B HSG ASSY P/N	HSG COLOR
21743	KIT, MTP® PRO, FEMALE, MM MTP Elite®, 2.0 RND, W/ PUSH-PULL CBL BOOT, AQUA HSG	MM MTP Elite®	25084	18189	AQUA
21744	KIT, MTP® PRO, MALE, MM MTP Elite®, 2.0 RND, W/ PUSH-PULL CBL BOOT, AQUA HSG	MM MTP Elite®	25085	18189	AQUA
21745	KIT, MTP® PRO, FEMALE, MM MTP Elite®, 2.0 RND, W/ PUSH-PULL CBL BOOT, HEATHER VIOLET HSG	MM MTP Elite®	25084	18191	HEATHER VIOLET
21746	KIT, MTP® PRO, MALE, MM MTP Elite®, 2.0 RND, W/ PUSH-PULL CBL BOOT, HEATHER VIOLET HSG	MM MTP Elite®	25085	18191	HEATHER VIOLET
21747	KIT, MTP® PRO, FEMALE, MM MTP Elite®, 2.0 RND, W/ PUSH-PULL CBL BOOT, LIME HSG	MM MTP Elite®	25084	19486	LIME
21748	KIT, MTP® PRO, MALE, MM MTP Elite®, 2.0 RND, W/ PUSH-PULL CBL BOOT, LIME HSG	MM MTP Elite®	25085	19486	LIME
21749	KIT, MTP® PRO, FEMALE, SM MTP Elite®, 2.0 RND, W/ PUSH-PULL CBL BOOT, GREEN HSG	SM MTP Elite®	25084	18190	GREEN
21750	KIT, MTP® PRO, MALE, SM MTP Elite®, 2.0 RND, W/ PUSH-PULL CBL BOOT, GREEN HSG	SM MTP Elite®	25087	18190	GREEN
24699	KIT, MTP® PRO, FEMALE, SM MTP Elite®, 2.0 RND, W/ PUSH-PULL CBL BOOT, YELLOW HSG	SM MTP Elite®	25084	22173	YELLOW
24700	KIT, MTP® PRO, MALE, SM MTP Elite®, 2.0 RND, W/ PUSH-PULL CBL BOOT, YELLOW HSG	SM MTP Elite®	25087	22173	YELLOW

SEE NOTE 2

1

2

3

4

5

6

7

FEMALE (PIN CLAMP)

OR

MALE (PIN CLAMP)

FERRULE / BOOT KIT SHOWN FOR REFERENCE ONLY, MUST BE PURCHASED SEPARATELY

USCONEC LTD. PROPRIETARY

THIS DOCUMENT AND THE ASSOCIATED DATA CONTAIN RESTRICTED INFORMATION THAT IS USCONEC LTD. PROPERTY. DISCLOSE OR DUPLICATE FOR OTHERS ONLY AS AUTHORIZED BY USCONEC LTD.

Material:

REV.	DATE	DESCRIPTION	ECN
X1	1/10/20	---	2265-mm
A	5/5/20	INITIAL RELEASE	
B	5/4/23	ADDED SME KIT P/N'S 24699 & 24700 TO TABLE	2750-mm
C	4/9/25	PIN CLAMP CHGS: 25084 was 17861; 25085 was 19038; 25087 was 19039	

CUSTOMER DRAWING

DIMENSIONS FOR REFERENCE ONLY

THIRD ANGLE PROJECTION

METRIC/mm

USCONEC

Hickory, NC
800-769-0944
www.usconec.com

TITLE

KIT, MTP® PRO CONNECTOR, 1.8 - 2.2 mm RND CBL, W/ PUSH-PULL CBL BOOT

SIZE

B

S&M Part No.:

SEE TABLE

DWG NO

C21743

REV

C

SCALE

N.T.S.

Drafter

M.McCROSKEY

Date:

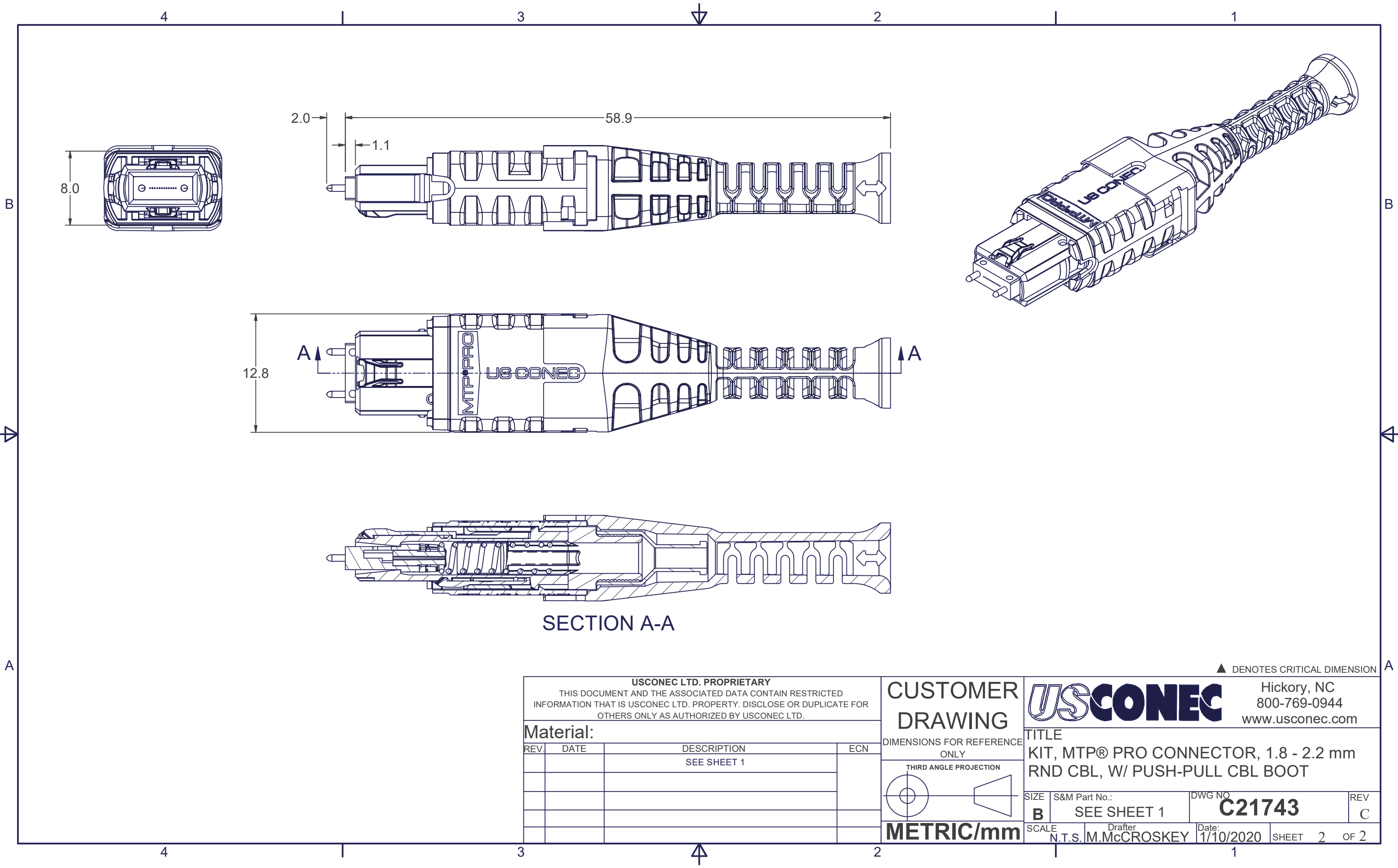
1/10/2020

SHEET

1

OF

2



USCONEC LTD. PROPRIETARY			
THIS DOCUMENT AND THE ASSOCIATED DATA CONTAIN RESTRICTED INFORMATION THAT IS USCONEC LTD. PROPERTY. DISCLOSE OR DUPLICATE FOR OTHERS ONLY AS AUTHORIZED BY USCONEC LTD.			
Material:			
REV.	DATE	DESCRIPTION	ECN
		SEE SHEET 1	

CUSTOMER
DRAWING

DIMENSIONS FOR REFERENCE
ONLY

THIRD ANGLE PROJECTION

METRIC/mm

USCONEC

Hickory, NC
800-769-0944
www.usconec.com

TITLE

KIT, MTP® PRO CONNECTOR, 1.8 - 2.2 mm
RND CBL, W/ PUSH-PULL CBL BOOT

SIZE

B

SCALE

N.T.S.

S&M Part No.:

SEE SHEET 1

Drafter

M.McCROSKEY

DWG NO

C21743

Date:

1/10/2020

REV

C

SHEET

2

OF

2