

4

3

2

1

Parts List

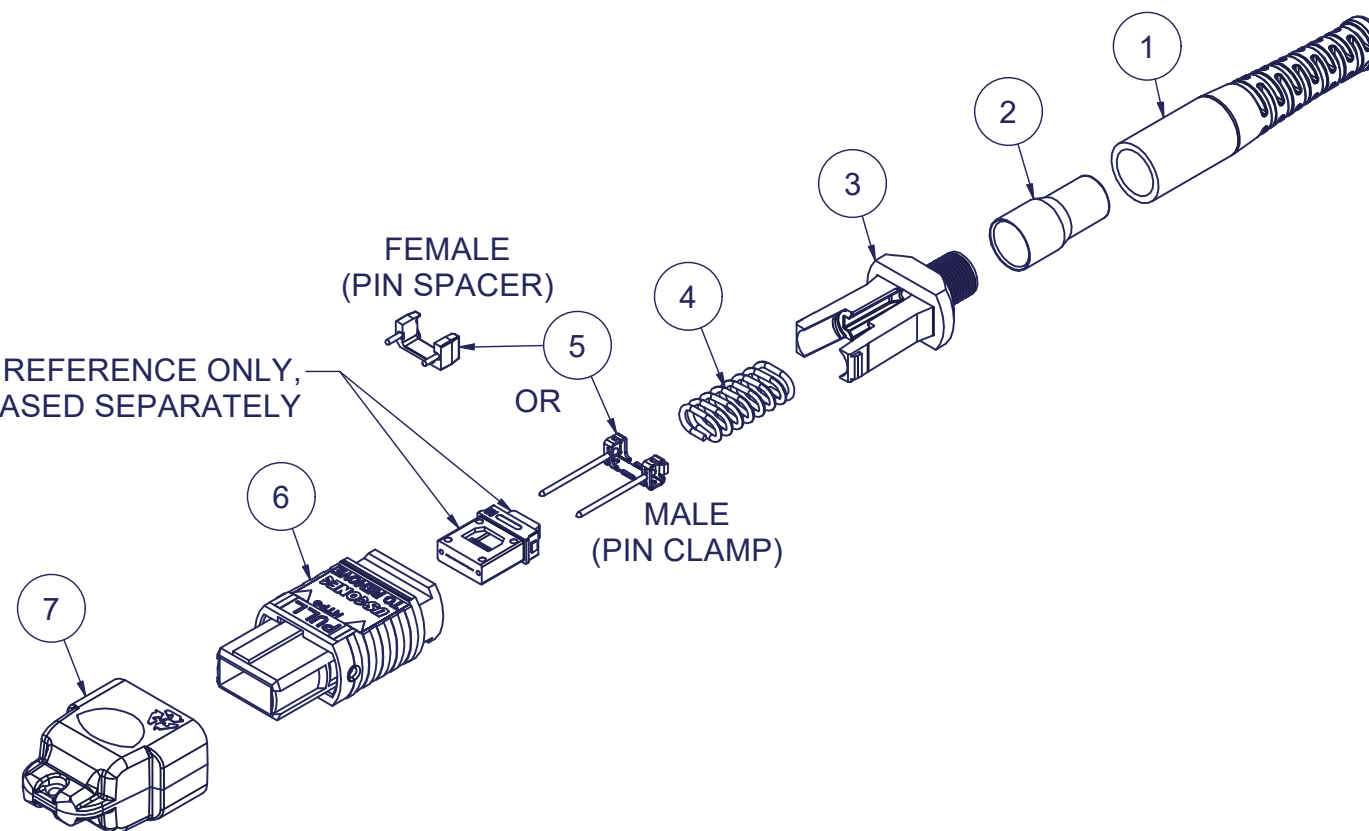
ITEM	DESCRIPTION	PART NUMBER	QTY	NOTES
1	BOOT, 3.0mm ROUND, MTP® FLEX	15960	1	
2	CRIMP BAND, 3.0 ROUND, MTP®	15633	1	
3	SPRING PUSH, UNIV., 3.0mm RND	19692	1	
4	SPRING, UNIVERSAL, 20N	22515	1	
5	PIN CLAMP or PIN SPACER	SEE KIT TABLE COLUMN A	1	NOTE 1
6	ASSEMBLY, HOUSING, MTP®-16	SEE KIT TABLE COLUMN B	1	
7	DUST CAP, MTP®	17242	1	

KIT P/N	KIT DESCRIPTION	PERFORMANCE	COLUMN A PIN CLAMP/SPACER P/N	COLUMN B HSG ASSY P/N	HSG ASSY COLOR
21353	KIT, MTP®-16, FEMALE, MM, 3.0 RND, MTP® FLEX BOOT, AQUA HSG	MM or MM MTP Elite®	15391	16819	AQUA
21354	KIT, MTP®-16, MALE, MM, 3.0 RND, MTP® FLEX BOOT, AQUA HSG	MM	17782	16819	AQUA
21355	KIT, MTP®-16, MALE, MM MTP Elite®, 3.0 RND, MTP® FLEX BOOT, AQUA HSG	MM MTP Elite®	15609	16819	AQUA
21356	KIT, MTP®-16, FEMALE, MM, 3.0 RND, MTP® FLEX BOOT, MAGENTA HSG	MM or MM MTP Elite®	15391	16822	MAGENTA
21357	KIT, MTP®-16, MALE, MM, 3.0 RND, MTP® FLEX BOOT, MAGENTA HSG	MM	17782	16822	MAGENTA
21358	KIT, MTP®-16, MALE, MM MTP Elite®, 3.0 RND, MTP® FLEX BOOT, MAGENTA HSG	MM MTP Elite®	15609	16822	MAGENTA
21359	KIT, MTP®-16, FEMALE, MM, 3.0 RND, MTP® FLEX BOOT, LIME HSG	MM or MM MTP Elite®	15391	19103	LIME
21360	KIT, MTP®-16, MALE, MM, 3.0 RND, MTP® FLEX BOOT, LIME HSG	MM	17782	19103	LIME
21361	KIT, MTP®-16, MALE, MM MTP Elite®, 3.0 RND, MTP® FLEX BOOT, LIME HSG	MM MTP Elite®	15609	19103	LIME
21362	KIT, MTP®-16, FEMALE, SM, 3.0 RND, MTP® FLEX BOOT, GREEN HSG	SM	15391	19068	GREEN
21363	KIT, MTP®-16, MALE, SM, 3.0 RND, MTP® FLEX BOOT, GREEN HSG	SM	15609	19068	GREEN
24973	KIT, MTP®-16, FEMALE, SM MTP Elite®, 3.0 RND, MTP® FLEX BOOT, YELLOW HSG	SM MTP Elite®	15391	19102	YELLOW
24974	KIT, MTP®-16, MALE, SM MTP Elite®, 3.0 RND, MTP® FLEX BOOT, YELLOW HSG	SM MTP Elite®	18297	19102	YELLOW

NOTES:

1. MALE CONNECTOR KIT HAS PIN CLAMP ASSEMBLY.
FEMALE CONNECTOR KIT HAS FEMALE PIN SPACER.

FERRULE / BOOT KIT SHOWN FOR REFERENCE ONLY,
MUST BE PURCHASED SEPARATELY



▲ DENOTES CRITICAL DIMENSION

USCONEC LTD. PROPRIETARY
THIS DOCUMENT AND THE ASSOCIATED DATA CONTAIN RESTRICTED
INFORMATION THAT IS USCONEC LTD. PROPERTY. DISCLOSE OR DUPLICATE FOR
OTHERS ONLY AS AUTHORIZED BY USCONEC LTD.

Material:

REV	DATE	DESCRIPTION	ECN
X1	4/23/19	RELEASE	2214-mm
A	6/26/19	INITIAL RELEASE	
B	11/1/21	SPRING 22515 was 17698; UPDATED DWG TITLE & KIT DESCRIPTIONS	2420-mm
C	9/11/23	ADDED KIT P/N's 24973 & 24974; UPDATED TRADEMARK	

CUSTOMER
DRAWINGDIMENSIONS FOR REFERENCE
ONLY

THIRD ANGLE PROJECTION



METRIC/mm

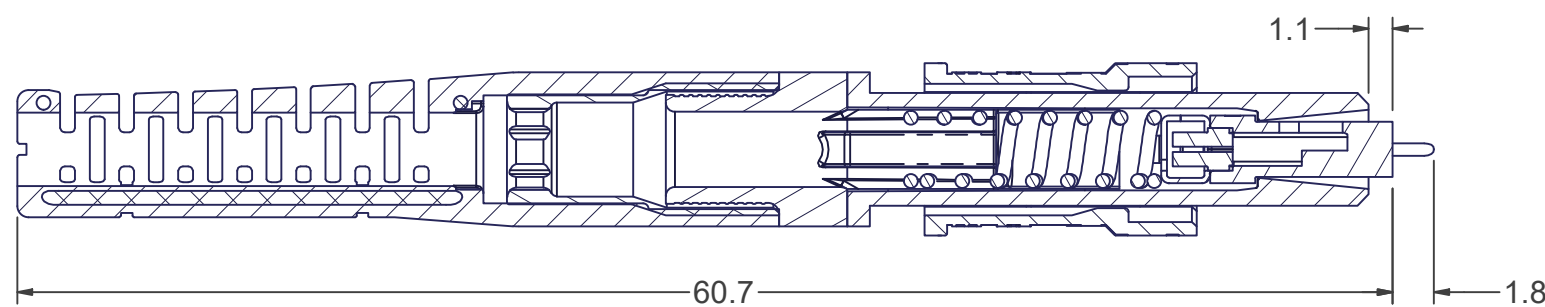
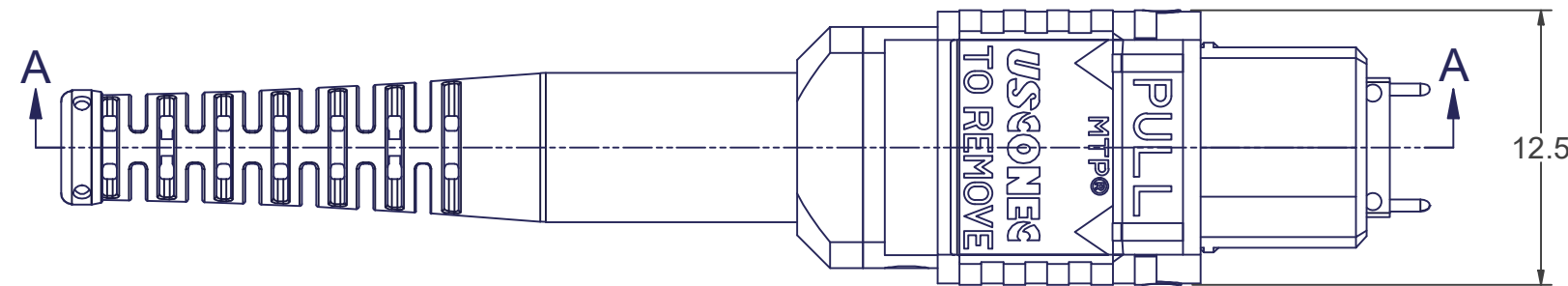
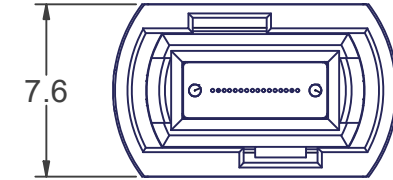
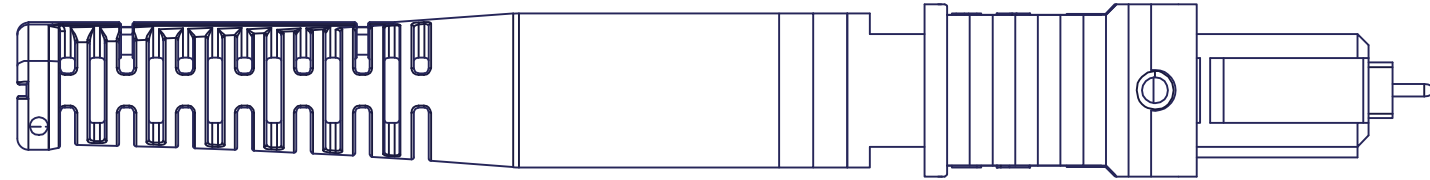
USCONEC

Hickory, NC
800-769-0944
www.usconec.com

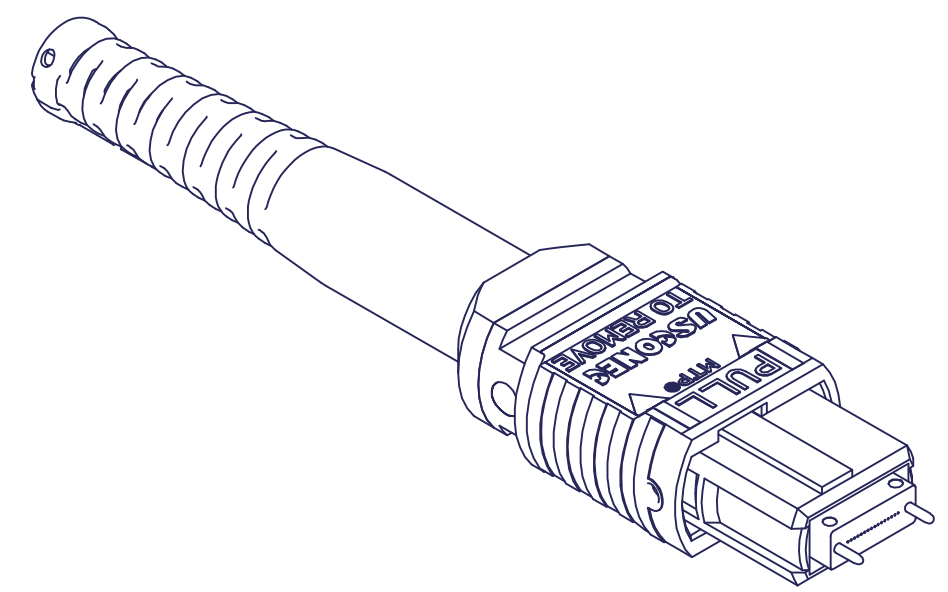
TITLE
KIT, MTP®-16 CONN., 2.8 - 3.2mm RND,
MTP® FLEX BOOT

SIZE B	S&M Part No.: SEE TABLE	DWG NO C21353	REV C
SCALE N.T.S.	Drafter M.McCROSKEY	Date: 4/23/2019	SHEET 1 OF 2

4 | | 3 | | 2 | | 1



SECTION A-A



B

B

A

A

A

A

USCONEC LTD. PROPRIETARY
THIS DOCUMENT AND THE ASSOCIATED DATA CONTAIN RESTRICTED INFORMATION THAT IS USCONEC LTD. PROPERTY. DISCLOSE OR DUPLICATE FOR OTHERS ONLY AS AUTHORIZED BY USCONEC LTD.

Material:

REV.	DATE	DESCRIPTION	ECN

CUSTOMER DRAWING

DIMENSIONS FOR REFERENCE ONLY

THIRD ANGLE PROJECTION

METRIC/mm

▲ DENOTES CRITICAL DIMENSION

USCONEC Hickory, NC
800-769-0944
www.usconec.com

TITLE
KIT, MTP®-16 CONN., 2.8 - 3.2mm RND,
MTP® FLEX BOOT

SIZE B	S&M Part No.: SEE SHEET 1	DWG NO. C21353	REV C
SCALE N.T.S.	Drafter M.McCROSKEY	Date: 4/23/2019	SHEET 2 OF 2

4 | | 3 | | 2 | | 1