

4

3

2

1

Parts List

ITEM	DESCRIPTION	PART NUMBER	QTY	NOTES
1	BOOT, MTP®, 20mm	MTP-012-06	1	
2	CRIMP RING, OVAL	MTP-A12-05	1	
3	SPRING PUSH, UNIVERSAL, OVAL & RIBBON, MTP®	5551	1	
4	SPRING, UNIVERSAL, 20N	22515	1	
5	PIN CLAMP or PIN SPACER, MTP®-16	SEE KIT TABLE COLUMN A	1	NOTE 1
6	ASSEMBLY, HOUSING, MTP®-16	SEE KIT TABLE COLUMN B	1	
7	DUST CAP, MTP®	17242	1	

KIT P/N	KIT DESCRIPTION	PERFORMANCE	COLUMN A PIN CLAMP/PIN SPACER P/N	COLUMN B HSG ASSY P/N	HSG ASSY COLOR
21051	KIT, MTP®-16, FEMALE, MM, OVAL JACKETED CBL, AQUA HSG	MM or MM MTP Elite®	15391	16819	AQUA
21052	KIT, MTP®-16, MALE, MM, OVAL JACKETED CBL, AQUA HSG	MM	17782	16819	AQUA
21053	KIT, MTP®-16, MALE, MM MTP Elite®, OVAL JACKETED CBL, AQUA HSG	MM MTP Elite®	15609	16819	AQUA
21054	KIT, MTP®-16, FEMALE, MM, OVAL JACKETED CBL, MAGENTA HSG	MM or MM MTP Elite®	15391	16822	MAGENTA
21055	KIT, MTP®-16, MALE, MM, OVAL JACKETED CBL, MAGENTA HSG	MM	17782	16822	MAGENTA
21056	KIT, MTP®-16, MALE, MM MTP Elite®, OVAL JACKETED CBL, MAGENTA HSG	MM MTP Elite®	15609	16822	MAGENTA
21057	KIT, MTP®-16, FEMALE, MM, OVAL JACKETED CBL, LIME HSG	MM or MM MTP Elite®	15391	19103	LIME
21058	KIT, MTP®-16, MALE, MM, OVAL JACKETED CBL, LIME HSG	MM	17782	19103	LIME
21059	KIT, MTP®-16, MALE, MM MTP Elite®, OVAL JACKETED CBL, LIME HSG	MM MTP Elite®	15609	19103	LIME
21060	KIT, MTP®-16, FEMALE, SM, OVAL JACKETED CBL, GREEN HSG	SM	15391	19068	GREEN
21061	KIT, MTP®-16, MALE, SM, OVAL JACKETED CBL, GREEN HSG	SM	15609	19068	GREEN
25010	KIT, MTP®-16, FEMALE, SM MTP Elite®, OVAL JACKETED CBL, YELLOW HSG	SM MTP Elite®	15391	19102	YELLOW
25011	KIT, MTP®-16, MALE, SM MTP Elite®, OVAL JACKETED CBL, YELLOW HSG	SM MTP Elite®	18297	19102	YELLOW

NOTES:

1. MALE CONNECTOR KIT HAS PIN CLAMP ASSEMBLY.  
FEMALE CONNECTOR KIT HAS FEMALE PIN SPACER.

FERRULE / BOOT KIT SHOWN FOR REFERENCE ONLY,  
MUST BE PURCHASED SEPARATELY

▲ DENOTES CRITICAL DIMENSION

USCONEC LTD. PROPRIETARY  
THIS DOCUMENT AND THE ASSOCIATED DATA CONTAIN RESTRICTED INFORMATION THAT IS USCONEC LTD. PROPERTY. DISCLOSE OR DUPLICATE FOR OTHERS ONLY AS AUTHORIZED BY USCONEC LTD.

**Material:**

REV	DATE	DESCRIPTION	ECN
X1	6/13/19	----	
A	7/2/19	INITIAL RELEASE	2222-mm
B	5/7/20	CORRECTED ITEM#4 DESC.	
C	11/1/21	SPRING 22515 was 17698; UPDATED DWG TITLE & KIT DESCRIPTIONS	2420-mm
D	10/19/23	ADDED SME KIT P/N's 25010 & 25011 TO TABLE; UPDATED TRADEMARK	

CUSTOMER DRAWING

DIMENSIONS FOR REFERENCE ONLY

THIRD ANGLE PROJECTION

METRIC/mm

Hickory, NC  
800-769-0944  
www.usconec.com

TITLE  
KIT, MTP®-16 CONNECTOR,  
OVAL JACKETED CABLE

SIZE <b>B</b>	S&M Part No.: SEE TABLE	DWG NO. <b>C21051</b>	REV <b>D</b>
SCALE N.T.S.	Drafter M.McCROSKEY	Date: 6/13/2019	SHEET 1 OF 2

4

3

2

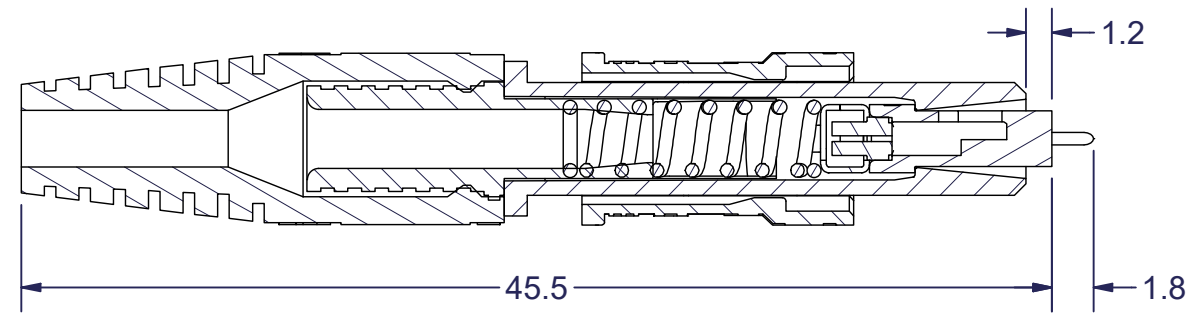
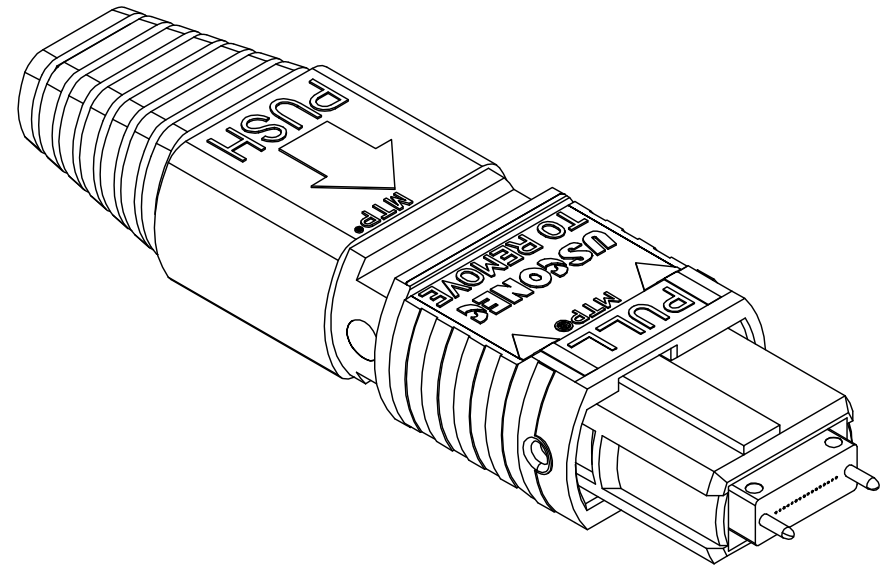
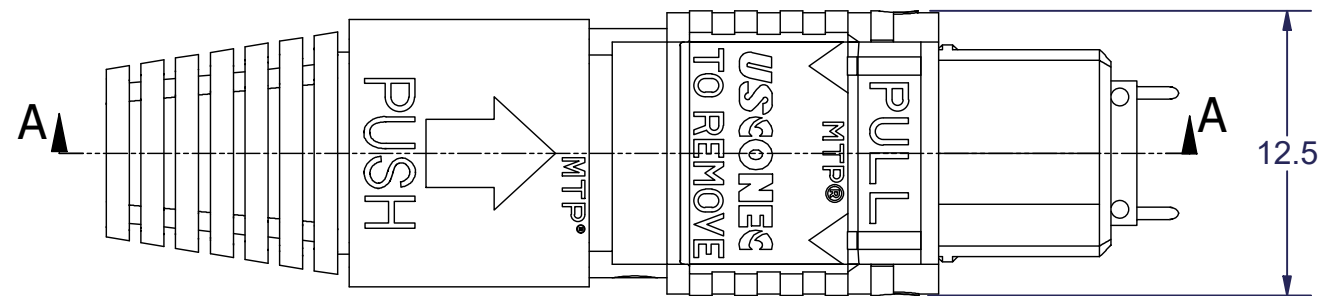
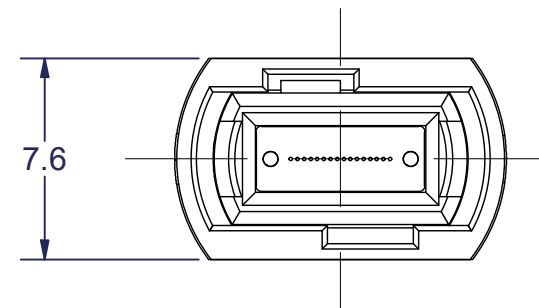
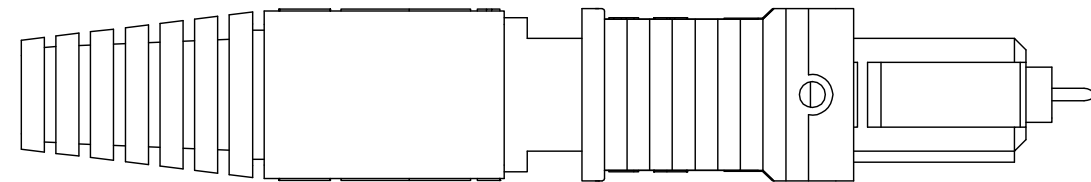
1

4

3

2

1



SECTION A-A

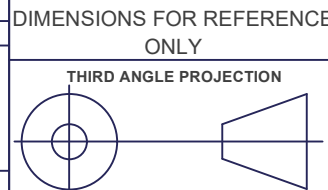
▲ DENOTES CRITICAL DIMENSION

**USCONEC LTD. PROPRIETARY**  
 THIS DOCUMENT AND THE ASSOCIATED DATA CONTAIN RESTRICTED INFORMATION THAT IS USCONEC LTD. PROPERTY. DISCLOSE OR DUPLICATE FOR OTHERS ONLY AS AUTHORIZED BY USCONEC LTD.

**Material:**

REV.	DATE	DESCRIPTION	ECN

**CUSTOMER DRAWING**  
 DIMENSIONS FOR REFERENCE ONLY



**METRIC/mm**

**USCONEC** Hickory, NC  
 800-769-0944  
 www.usconec.com

**TITLE**  
 KIT, MTP®-16 CONNECTOR,  
 OVAL JACKETED CABLE

SIZE <b>B</b>	S&M Part No.: SEE TABLE	DWG NO. <b>C21051</b>	REV D
SCALE N.T.S.	Drafter M.McCROSKEY	Date: 6/13/2019	SHEET 2 OF 2

4

3

2

1