

4

3

2

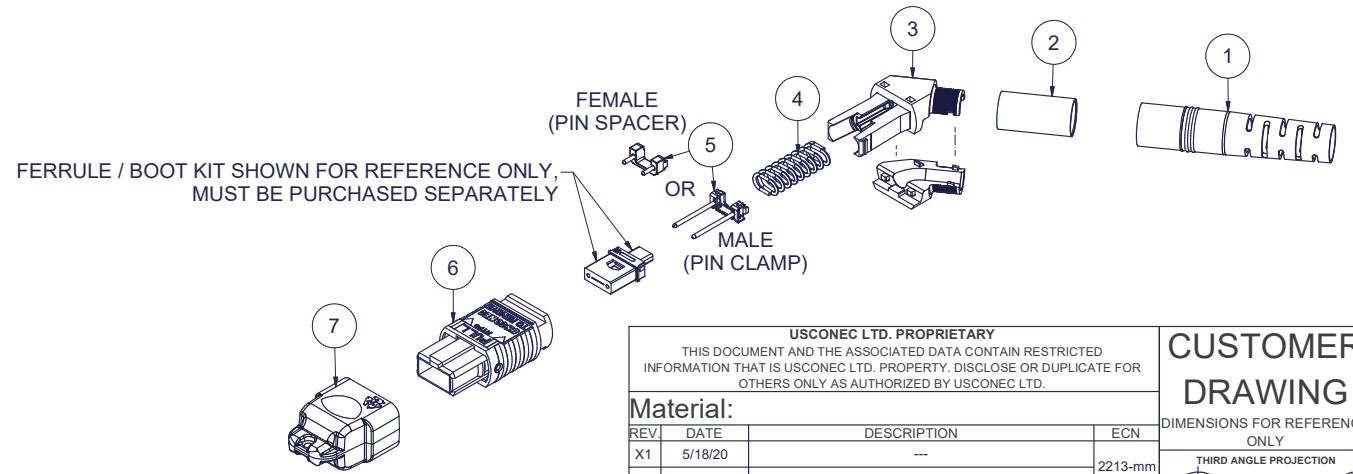
1

Parts List

ITEM	DESCRIPTION	PART NUMBER	QTY	NOTES
1	BOOT, ROUND, 5.0/5.5 CABLE	12978	1	
2	CRIMP BAND, 5.5, ROUND, MTP®	16429	1	
3	SPRING PUSH, UNIVERSAL, 2 PC, ANGLED	19973	1	
4	SPRING, UNIVERSAL, 20N	17698	1	
5	PIN CLAMP or PIN SPACER	SEE KIT TABLE COLUMN A	1	NOTE 1
6	ASSEMBLY, HOUSING, MTP®	SEE KIT TABLE COLUMN B	1	
7	DUST CAP, MTP®	17242	1	

KIT P/N	KIT DESCRIPTION	PERFORMANCE	COLUMN A		COLUMN B	
			PIN CLAMP/SPACER P/N	HSG ASSY P/N	HSG ASSY COLOR	
20897	KIT, MTP®, UNIVERSAL, FEMALE, MM, 5.5 RND, ANGLED SPRING PUSH, HSF, BEIGE	MM	17795	MTP-A12-11	BEIGE	
20898	KIT, MTP®, UNIVERSAL, MALE, MM, 5.5 RND, ANGLED SPRING PUSH, HSF, BEIGE	MM	17799	MTP-A12-11	BEIGE	
20899	KIT, MTP®, UNIVERSAL, FEMALE, MM, 5.5 RND, ANGLED SPRING PUSH, HSF, BLACK	MM	17795	MTP-A12-02	BLACK	
20900	KIT, MTP®, UNIVERSAL, MALE, MM, 5.5 RND, ANGLED SPRING PUSH, HSF, BLACK	MM	17799	MTP-A12-02	BLACK	
20901	KIT, MTP®, UNIVERSAL, FEMALE, MM, 5.5 RND, ANGLED SPRING PUSH, HSF, AQUA	MM or MM MTP Elite®	17795	7871	AQUA	
20902	KIT, MTP®, UNIVERSAL, MALE, MM, 5.5 RND, ANGLED SPRING PUSH, HSF, AQUA	MM	17799	7871	AQUA	
20903	KIT, MTP®, UNIVERSAL, MALE, MM MTP Elite®, 5.5 RND, ANGLED SPRING PUSH, HSF, AQUA	MM MTP Elite®	17800	7871	AQUA	
20904	KIT, MTP®, UNIVERSAL, FEMALE, MM, 5.5 RND, ANGLED SPRING PUSH, HSF, MAGENTA	MM or MM MTP Elite®	17795	13949	MAGENTA	
20905	KIT, MTP®, UNIVERSAL, MALE, MM, 5.5 RND, ANGLED SPRING PUSH, HSF, MAGENTA	MM	17799	13949	MAGENTA	
20906	KIT, MTP®, UNIVERSAL, MALE, MM MTP Elite®, 5.5 RND, ANGLED SPRING PUSH, HSF, MAGENTA	MM MTP Elite®	17800	13949	MAGENTA	
20907	KIT, MTP®, UNIVERSAL, FEMALE, MM, 5.5 RND, ANGLED SPRING PUSH, HSF, HEATHER VIOLET	MM or MM MTP Elite®	17795	16693	HEATHER VIOLET	
20908	KIT, MTP®, UNIVERSAL, MALE, MM, 5.5 RND, ANGLED SPRING PUSH, HSF, HEATHER VIOLET	MM	17799	16693	HEATHER VIOLET	
20909	KIT, MTP®, UNIVERSAL, MALE, MM MTP Elite®, 5.5 RND, ANGLED SPRING PUSH, HSF, HEATHER VIOLET	MM MTP Elite®	17800	16693	HEATHER VIOLET	
20910	KIT, MTP®, UNIVERSAL, FEMALE, MM, 5.5 RND, ANGLED SPRING PUSH, HSF, MUNSELL VIOLET	MM or MM MTP Elite®	17795	16791	MUNSELL VIOLET	
20911	KIT, MTP®, UNIVERSAL, MALE, MM, 5.5 RND, ANGLED SPRING PUSH, HSF, MUNSELL VIOLET	MM	17799	16791	MUNSELL VIOLET	
20912	KIT, MTP®, UNIVERSAL, MALE, MM MTP Elite®, 5.5 RND, ANGLED SPRING PUSH, HSF, MUNSELL VIOLET	MM MTP Elite®	17800	16791	MUNSELL VIOLET	
20913	KIT, MTP®, UNIVERSAL, FEMALE, MM, 5.5 RND, ANGLED SPRING PUSH, HSF, LIME	MM or MM MTP Elite®	17795	18829	LIME	
20914	KIT, MTP®, UNIVERSAL, MALE, MM, 5.5 RND, ANGLED SPRING PUSH, HSF, LIME	MM	17799	18829	LIME	
20915	KIT, MTP®, UNIVERSAL, MALE, MM MTP Elite®, 5.5 RND, ANGLED SPRING PUSH, HSF, LIME	MM MTP Elite®	17800	18829	LIME	
20916	KIT, MTP®, UNIVERSAL, FEMALE, SM, 5.5 RND, ANGLED SPRING PUSH, HSF, GREEN	SM	17795	16007	GREEN	
20917	KIT, MTP®, UNIVERSAL, MALE, SM, 5.5 RND, ANGLED SPRING PUSH, HSF, GREEN	SM	17800	16007	GREEN	
20918	KIT, MTP®, UNIVERSAL, FEMALE, SM MTP Elite®, 5.5 RND, ANGLED SPRING PUSH, HSF, YELLOW	SM MTP Elite®	17795	16918	YELLOW	
20919	KIT, MTP®, UNIVERSAL, MALE, SM MTP Elite®, 5.5 RND, ANGLED SPRING PUSH, HSF, YELLOW	SM MTP Elite®	17801	16918	YELLOW	

NOTES:
 1. MALE CONNECTOR KIT HAS PIN CLAMP ASSEMBLY.
 FEMALE CONNECTOR KIT HAS FEMALE PIN SPACER.



USCONEC LTD. PROPRIETARY
 THIS DOCUMENT AND THE ASSOCIATED DATA CONTAIN RESTRICTED INFORMATION THAT IS USCONEC LTD. PROPERTY. DISCLOSE OR DUPLICATE FOR OTHERS ONLY AS AUTHORIZED BY USCONEC LTD.

Material:

REV	DATE	DESCRIPTION	ECN
X1	5/18/20	---	2213-mm
A	5/20/20	INITIAL RELEASE	

CUSTOMER DRAWING

DIMENSIONS FOR REFERENCE ONLY

THIRD ANGLE PROJECTION

METRIC/mm

▲ DENOTES CRITICAL DIMENSION

Hickory, NC
 800-769-0944
 www.usconec.com

USCONEC

TITLE
 KIT, MTP® CONN., UNIV., 5.3 - 5.7mm RND CBL, ANGLED SPRING PUSH, HIGH SPRING FORCE

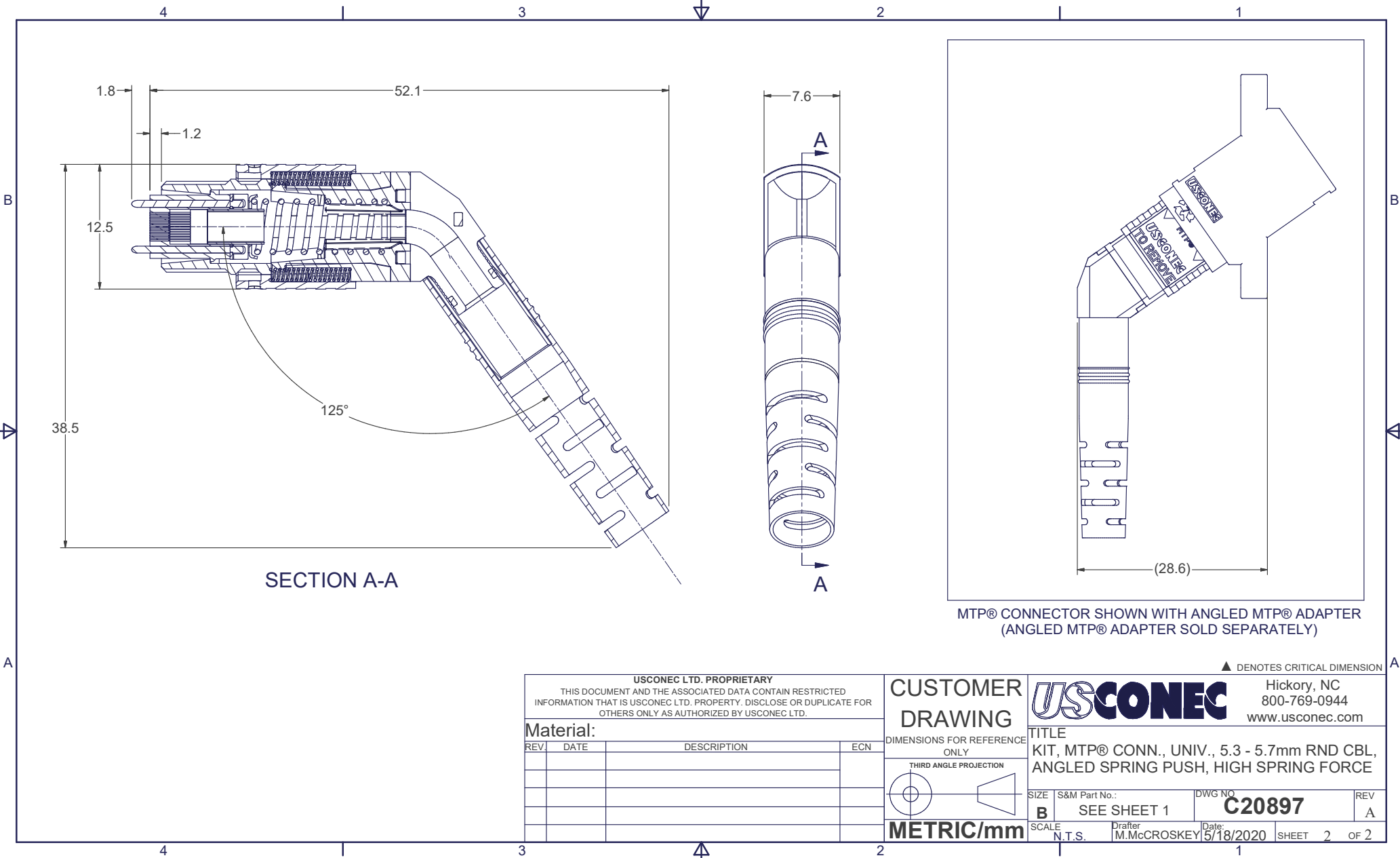
SIZE	S&M Part No.:	DWG NO.	REV
B	SEE TABLE	C20897	A
SCALE	Drafter	Date:	SHEET
N.T.S.	M.McCROSKEY	5/18/2020	1 OF 2

4

3

2

1



SECTION A-A

MTP® CONNECTOR SHOWN WITH ANGLED MTP® ADAPTER
(ANGLED MTP® ADAPTER SOLD SEPARATELY)

USCONEC LTD. PROPRIETARY
THIS DOCUMENT AND THE ASSOCIATED DATA CONTAIN RESTRICTED INFORMATION THAT IS USCONEC LTD. PROPERTY. DISCLOSE OR DUPLICATE FOR OTHERS ONLY AS AUTHORIZED BY USCONEC LTD.

Material:

REV.	DATE	DESCRIPTION	ECN

CUSTOMER DRAWING

DIMENSIONS FOR REFERENCE ONLY

THIRD ANGLE PROJECTION

METRIC/mm

▲ DENOTES CRITICAL DIMENSION

USCONEC
Hickory, NC
800-769-0944
www.usconec.com

TITLE
KIT, MTP® CONN., UNIV., 5.3 - 5.7mm RND CBL, ANGLED SPRING PUSH, HIGH SPRING FORCE

SIZE B	S&M Part No.: SEE SHEET 1	DWG NO. C20897	REV A
SCALE N.T.S.	Drafter M.McCROSKEY	Date: 5/18/2020	SHEET 2 OF 2