

4

3

2

1

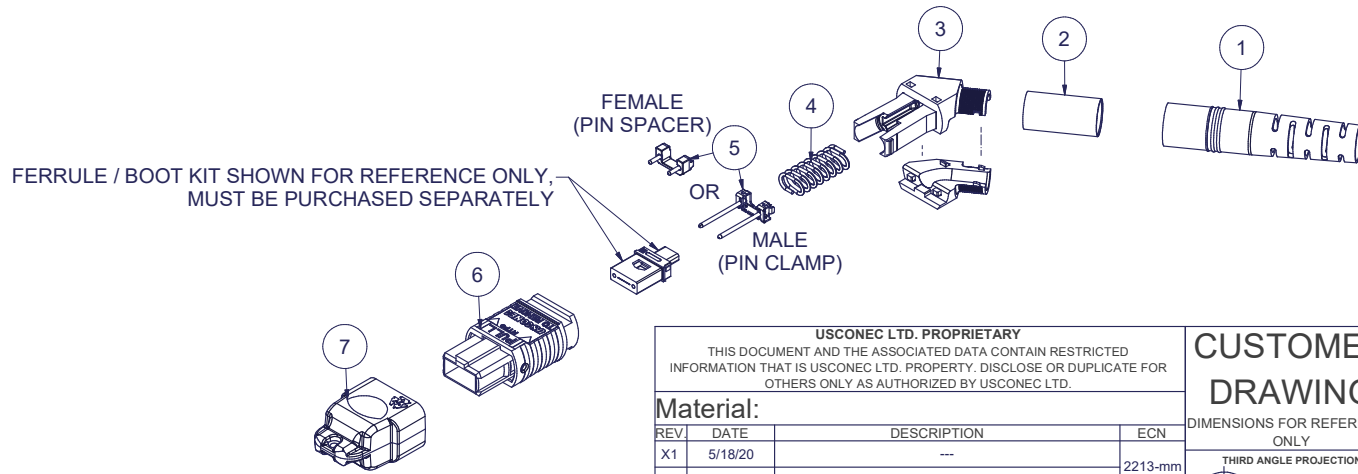
Parts List

ITEM	DESCRIPTION	PART NUMBER	QTY	NOTES
1	BOOT, ROUND, 5.0/5.5 CABLE	12978	1	
2	CRIMP BAND, 5.5, ROUND, MTP®	16429	1	
3	SPRING PUSH, UNIVERSAL, 2 PC, ANGLED	19973	1	
4	SPRING, UNIVERSAL, 9.8N, MTP®	17167	1	
5	PIN CLAMP or PIN SPACER	SEE KIT TABLE COLUMN A	1	NOTE 1
6	ASSEMBLY, HOUSING, MTP®	SEE KIT TABLE COLUMN B	1	
7	DUST CAP, MTP®	17242	1	

KIT P/N	KIT DESCRIPTION	PERFORMANCE	COLUMN A PIN CLAMP/ SPACER P/N	COLUMN B HSG ASSY P/N	HSG ASSY COLOR
20874	KIT, MTP®, UNIVERSAL, FEMALE, MM, 5.5 RND, ANGLED SPRING PUSH, BEIGE	MM	17795	MTP-A12-11	BEIGE
20875	KIT, MTP®, UNIVERSAL, MALE, MM, 5.5 RND, ANGLED SPRING PUSH, BEIGE	MM	17799	MTP-A12-11	BEIGE
20876	KIT, MTP®, UNIVERSAL, FEMALE, MM, 5.5 RND, ANGLED SPRING PUSH, BLACK	MM	17795	MTP-A12-02	BLACK
20877	KIT, MTP®, UNIVERSAL, MALE, MM, 5.5 RND, ANGLED SPRING PUSH, BLACK	MM	17799	MTP-A12-02	BLACK
20878	KIT, MTP®, UNIVERSAL, FEMALE, MM, 5.5 RND, ANGLED SPRING PUSH, AQUA	MM or MM MTP Elite®	17795	7871	AQUA
20879	KIT, MTP®, UNIVERSAL, MALE, MM, 5.5 RND, ANGLED SPRING PUSH, AQUA	MM	17799	7871	AQUA
20880	KIT, MTP®, UNIVERSAL, MALE, MM MTP Elite®, 5.5 RND, ANGLED SPRING PUSH, AQUA	MM MTP Elite®	17800	7871	AQUA
20881	KIT, MTP®, UNIVERSAL, FEMALE, MM, 5.5 RND, ANGLED SPRING PUSH, MAGENTA	MM or MM MTP Elite®	17795	13949	MAGENTA
20882	KIT, MTP®, UNIVERSAL, MALE, MM, 5.5 RND, ANGLED SPRING PUSH, MAGENTA	MM	17799	13949	MAGENTA
20883	KIT, MTP®, UNIVERSAL, MALE, MM MTP Elite®, 5.5 RND, ANGLED SPRING PUSH, MAGENTA	MM MTP Elite®	17800	13949	MAGENTA
20884	KIT, MTP®, UNIVERSAL, FEMALE, MM, 5.5 RND, ANGLED SPRING PUSH, HEATHER VIOLET	MM or MM MTP Elite®	17795	16693	HEATHER VIOLET
20885	KIT, MTP®, UNIVERSAL, MALE, MM, 5.5 RND, ANGLED SPRING PUSH, HEATHER VIOLET	MM	17799	16693	HEATHER VIOLET
20886	KIT, MTP®, UNIVERSAL, MALE, MM MTP Elite®, 5.5 RND, ANGLED SPRING PUSH, HEATHER VIOLET	MM MTP Elite®	17800	16693	HEATHER VIOLET
20887	KIT, MTP®, UNIVERSAL, FEMALE, MM, 5.5 RND, ANGLED SPRING PUSH, MUNSSELL VIOLET	MM or MM MTP Elite®	17795	16791	MUNSSELL VIOLET
20888	KIT, MTP®, UNIVERSAL, MALE, MM, 5.5 RND, ANGLED SPRING PUSH, MUNSSELL VIOLET	MM	17799	16791	MUNSSELL VIOLET
20889	KIT, MTP®, UNIVERSAL, MALE, MM MTP Elite®, 5.5 RND, ANGLED SPRING PUSH, MUNSSELL VIOLET	MM MTP Elite®	17800	16791	MUNSSELL VIOLET
20890	KIT, MTP®, UNIVERSAL, FEMALE, MM, 5.5 RND, ANGLED SPRING PUSH, LIME	MM or MM MTP Elite®	17795	18829	LIME
20891	KIT, MTP®, UNIVERSAL, MALE, MM, 5.5 RND, ANGLED SPRING PUSH, LIME	MM	17799	18829	LIME
20892	KIT, MTP®, UNIVERSAL, MALE, MM MTP Elite®, 5.5 RND, ANGLED SPRING PUSH, LIME	MM MTP Elite®	17800	18829	LIME
20893	KIT, MTP®, UNIVERSAL, FEMALE, SM, 5.5 RND, ANGLED SPRING PUSH, GREEN	SM	17795	16007	GREEN
20894	KIT, MTP®, UNIVERSAL, MALE, SM, 5.5 RND, ANGLED SPRING PUSH, GREEN	SM	17800	16007	GREEN
20895	KIT, MTP®, UNIVERSAL, FEMALE, SM MTP Elite®, 5.5 RND, ANGLED SPRING PUSH, YELLOW	SM MTP Elite®	17795	16918	YELLOW
20896	KIT, MTP®, UNIVERSAL, MALE, SM MTP Elite®, 5.5 RND, ANGLED SPRING PUSH, YELLOW	SM MTP Elite®	17801	16918	YELLOW

NOTES:

1. MALE CONNECTOR KIT HAS PIN CLAMP ASSEMBLY. FEMALE CONNECTOR KIT HAS FEMALE PIN SPACER.



USCONEC LTD. PROPRIETARY
THIS DOCUMENT AND THE ASSOCIATED DATA CONTAIN RESTRICTED INFORMATION THAT IS USCONEC LTD. PROPERTY. DISCLOSE OR DUPLICATE FOR OTHERS ONLY AS AUTHORIZED BY USCONEC LTD.

Material:

REV	DATE	DESCRIPTION	ECN
X1	5/18/20	---	2213-mm
A	5/20/20	INITIAL RELEASE	

CUSTOMER DRAWING

DIMENSIONS FOR REFERENCE ONLY

THIRD ANGLE PROJECTION

METRIC/mm

▲ DENOTES CRITICAL DIMENSION

Hickory, NC
800-769-0944
www.usconec.com

USCONEC

TITLE
KIT, MTP® CONN., UNIV., 5.3 - 5.7mm
ROUND CBL, ANGLED SPRING PUSH

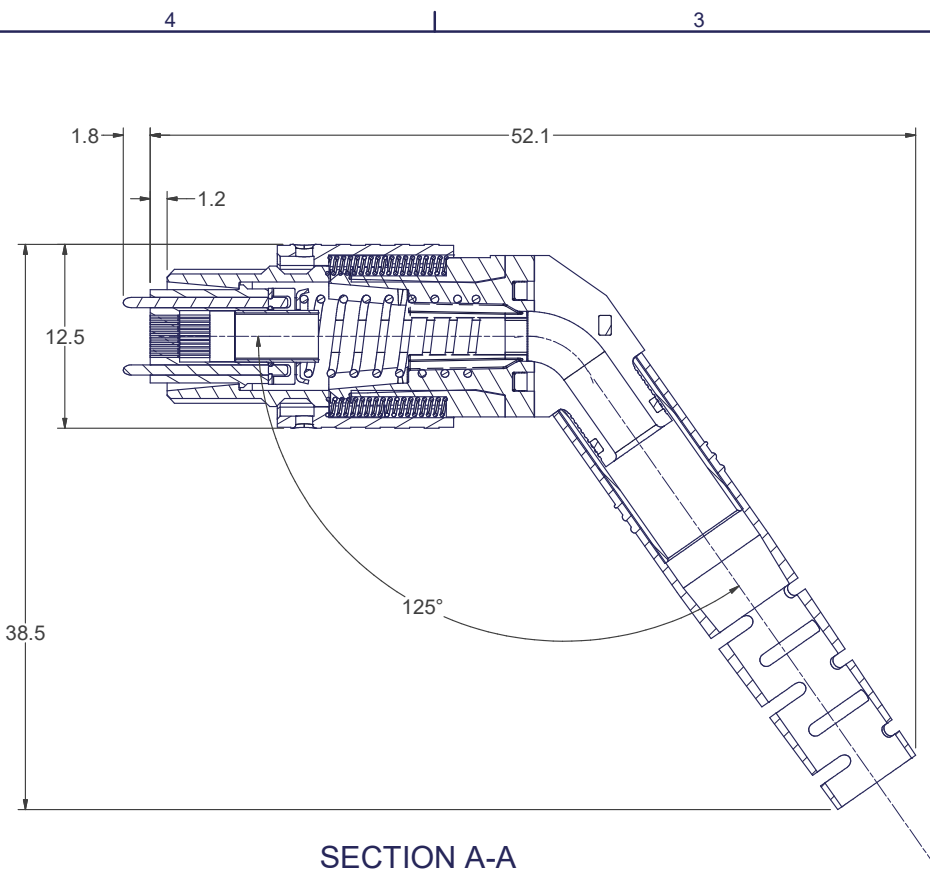
SIZE B	S&M Part No.: SEE TABLE	DWG NO. C20874	REV A
SCALE N.T.S.	Drafter M.McCROSKEY	Date 5/18/2020	SHEET 1 OF 2

4

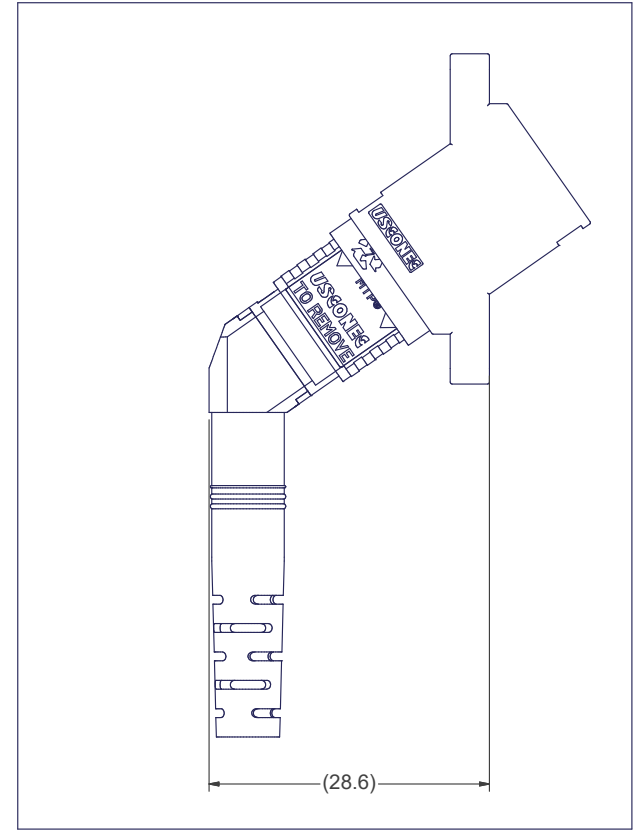
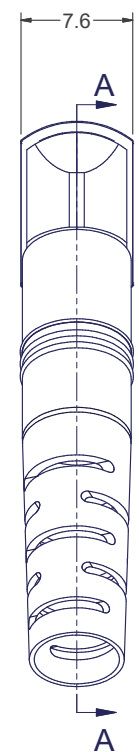
3

2

1



SECTION A-A



MTP® CONNECTOR SHOWN WITH ANGLED MTP® ADAPTER
(ANGLED MTP® ADAPTER SOLD SEPARATELY)

USCONEC LTD. PROPRIETARY
THIS DOCUMENT AND THE ASSOCIATED DATA CONTAIN RESTRICTED INFORMATION THAT IS USCONEC LTD. PROPERTY. DISCLOSE OR DUPLICATE FOR OTHERS ONLY AS AUTHORIZED BY USCONEC LTD.

Material:

REV.	DATE	DESCRIPTION	ECN

CUSTOMER DRAWING

DIMENSIONS FOR REFERENCE ONLY

THIRD ANGLE PROJECTION

METRIC/mm

▲ DENOTES CRITICAL DIMENSION

USCONEC Hickory, NC
800-769-0944
www.usconec.com

TITLE
**KIT, MTP® CONN., UNIV., 5.3 - 5.7mm
ROUND CBL, ANGLED SPRING PUSH**

SIZE B	S&M Part No.: SEE SHEET 1	DWG NO. C20874	REV A
SCALE N.T.S.	Drafter M.McCROSKEY	Date: 5/18/2020	SHEET 2 OF 2