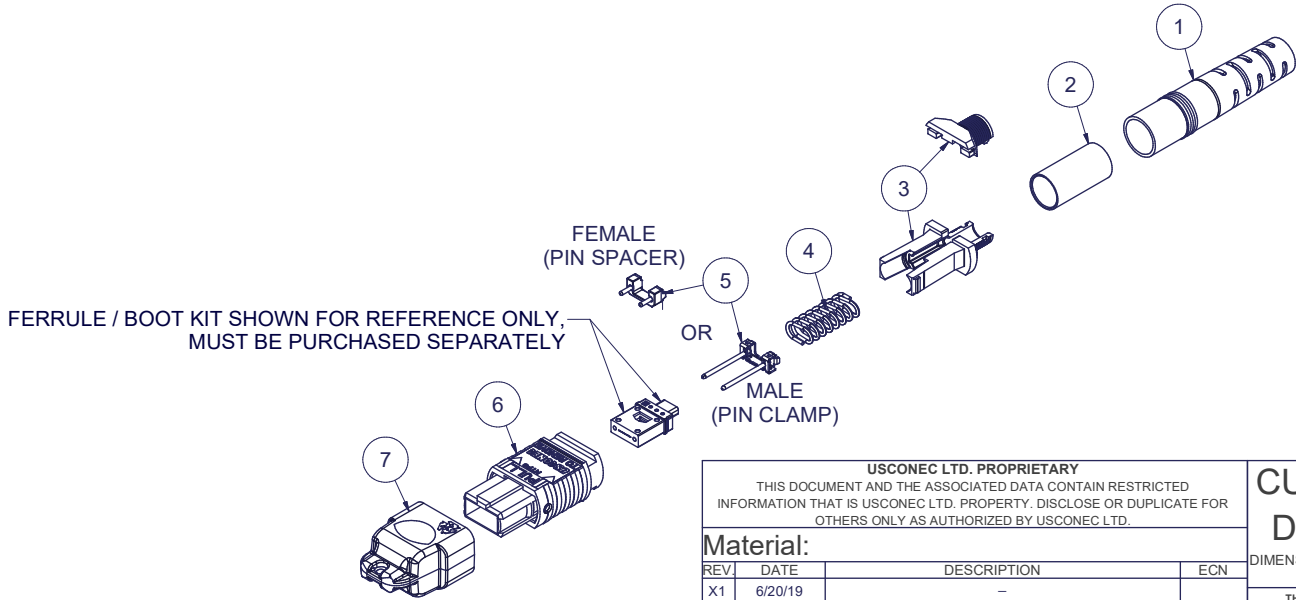


Parts List				
ITEM	DESCRIPTION	PART NUMBER	QTY	NOTES
1	BOOT, ROUND, 5.0/5.5 CABLE	12978	1	
2	CRIMP BAND, 5.5, ROUND, MTP®	16429	1	
3	SPRING PUSH, UNIVERSAL, 2 PC, 4.0 - 5.5mm RND, MTP®	19740	1	
4	SPRING, UNIVERSAL, 9.8N, MTP®	17167	1	
5	PIN CLAMP or PIN SPACER	SEE KIT TABLE COLUMN A	1	NOTE 1
6	ASSEMBLY, HOUSING, MTP®	SEE KIT TABLE COLUMN B	1	
7	DUST CAP, MTP®	17242	1	

KIT P/N	KIT DESCRIPTION	PERFORMANCE	COLUMN A	COLUMN B	HSG ASSY COLOR
			PIN CLAMP/SPACER PN	HSG PN	
20828	KIT, MTP®, UNIV., FEMALE, MM, 5.5mm RND, BEIGE	MM	17795	MTP-A12-11	BEIGE
20829	KIT, MTP®, UNIV., MALE, MM, 5.5mm RND, BEIGE	MM	17799	MTP-A12-11	BEIGE
20830	KIT, MTP®, UNIV., FEMALE, MM, 5.5mm RND, BLACK	MM	17795	MTP-A12-02	BLACK
20831	KIT, MTP®, UNIV., MALE, MM, 5.5mm RND, BLACK	MM	17799	MTP-A12-02	BLACK
20832	KIT, MTP®, UNIV., FEMALE, MM, 5.5mm RND, AQUA	MM or MM MTP Elite®	17795	7871	AQUA
20833	KIT, MTP®, UNIV., MALE, MM, 5.5mm RND, AQUA	MM	17799	7871	AQUA
20834	KIT, MTP®, UNIV., MALE, MM MTP Elite®, 5.5mm RND, AQUA	MM MTP Elite®	17800	7871	AQUA
20835	KIT, MTP®, UNIV., FEMALE, MM, 5.5mm RND, MAGENTA	MM or MM MTP Elite®	17795	13949	MAGENTA
20836	KIT, MTP®, UNIV., MALE, MM, 5.5mm RND, MAGENTA	MM	17799	13949	MAGENTA
20837	KIT, MTP®, UNIV., MALE, MM MTP Elite®, 5.5mm RND, MAGENTA	MM MTP Elite®	17800	13949	MAGENTA
20838	KIT, MTP®, UNIV., FEMALE, MM, 5.5mm RND, HEATHER VIOLET	MM or MM MTP Elite®	17795	16693	HEATHER VIOLET
20839	KIT, MTP®, UNIV., MALE, MM, 5.5mm RND, HEATHER VIOLET	MM	17799	16693	HEATHER VIOLET
20840	KIT, MTP®, UNIV., MALE, MM MTP Elite®, 5.5mm RND, HEATHER VIOLET	MM MTP Elite®	17800	16693	HEATHER VIOLET
20841	KIT, MTP®, UNIV., FEMALE, MM, 5.5mm RND, MUNSSELL VIOLET	MM or MM MTP Elite®	17795	16791	MUNSSELL VIOLET
20842	KIT, MTP®, UNIV., MALE, MM, 5.5mm RND, MUNSSELL VIOLET	MM	17799	16791	MUNSSELL VIOLET
20843	KIT, MTP®, UNIV., MALE, MM MTP Elite®, 5.5mm RND, MUNSSELL VIOLET	MM MTP Elite®	17800	16791	MUNSSELL VIOLET
20844	KIT, MTP®, UNIV., FEMALE, MM, 5.5mm RND, LIME	MM or MM MTP Elite®	17795	18829	LIME
20845	KIT, MTP®, UNIV., MALE, MM, 5.5mm RND, LIME	MM	17799	18829	LIME
20846	KIT, MTP®, UNIV., MALE, MM MTP Elite®, 5.5mm RND, LIME	MM MTP Elite®	17800	18829	LIME
20847	KIT, MTP®, UNIV., FEMALE, SM, 5.5mm RND, GREEN	SM	17795	16007	GREEN
20848	KIT, MTP®, UNIV., MALE, SM, 5.5mm RND, GREEN	SM	17800	16007	GREEN
20849	KIT, MTP®, UNIV., FEMALE, SM MTP Elite®, 5.5mm RND, YELLOW	SM MTP Elite®	17795	16918	YELLOW
20850	KIT, MTP®, UNIV., MALE, SM MTP Elite®, 5.5mm RND, YELLOW	SM MTP Elite®	17801	16918	YELLOW

NOTES:

1. MALE CONNECTOR KIT HAS PIN CLAMP ASSEMBLY, FEMALE CONNECTOR KIT HAS FEMALE PIN SPACER



USCONEC LTD. PROPRIETARY  
THIS DOCUMENT AND THE ASSOCIATED DATA CONTAIN RESTRICTED INFORMATION THAT IS USCONEC LTD. PROPERTY. DISCLOSE OR DUPLICATE FOR OTHERS ONLY AS AUTHORIZED BY USCONEC LTD.

Material:

REV	DATE	DESCRIPTION	ECN
X1	6/20/19	-	
A	1/14/20	INITIAL RELEASE	2225-mm
B	4/16/20	CORRECTED KIT DESCRIPTIONS	

**CUSTOMER DRAWING**

DIMENSIONS FOR REFERENCE ONLY

THIRD ANGLE PROJECTION

**METRIC/mm**

▲ DENOTES CRITICAL DIMENSION

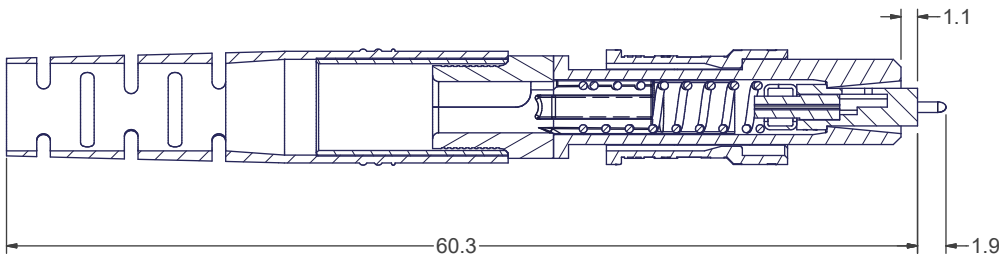
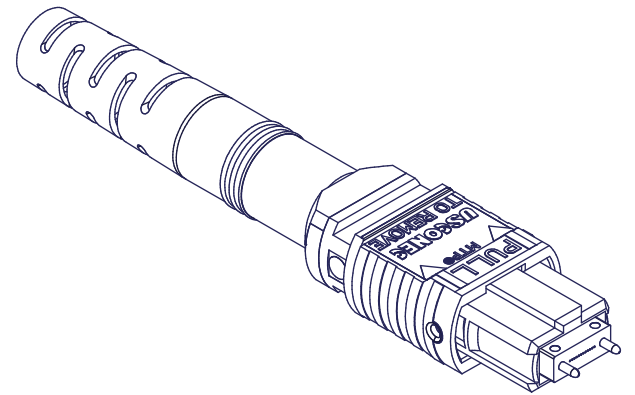
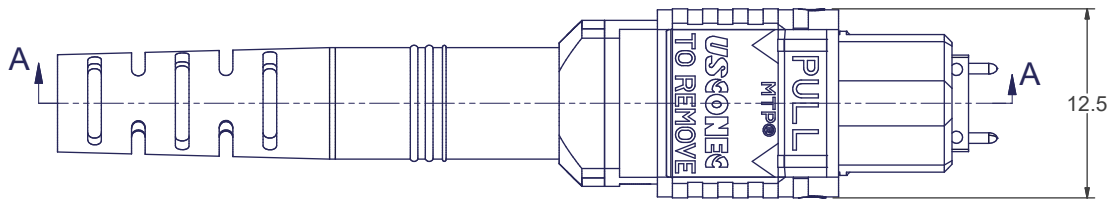
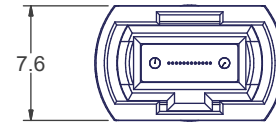
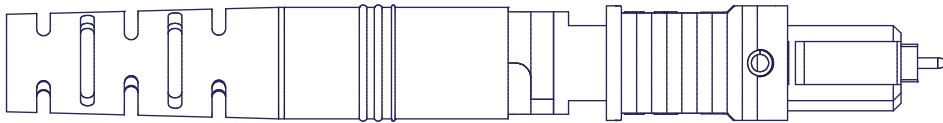
**USCONEC** Hickory, NC  
800-769-0944  
www.usconec.com

TITLE  
KIT, MTP® CONNECTOR, UNIVERSAL,  
5.3 - 5.7mm ROUND CABLE

SIZE **A3** S&M Part No.: SEE TABLE DWG NO. **C20828** REV B

SCALE N.T.S. Drafter M.McCROSKY Date: 6/20/2019 SHEET 1 OF 2

6 5 4 3 2 1



SECTION A-A

▲ DENOTES CRITICAL DIMENSION

**USCONEC LTD. PROPRIETARY**  
 THIS DOCUMENT AND THE ASSOCIATED DATA CONTAIN RESTRICTED INFORMATION THAT IS USCONEC LTD. PROPERTY. DISCLOSE OR DUPLICATE FOR OTHERS ONLY AS AUTHORIZED BY USCONEC LTD.

**CUSTOMER DRAWING**

**Material:**

REV	DATE	DESCRIPTION	ECN

DIMENSIONS FOR REFERENCE ONLY

THIRD ANGLE PROJECTION

**METRIC/mm**

**USCONEC** Hickory, NC  
 800-769-0944  
 www.usconec.com

**TITLE**  
 KIT, MTP® CONNECTOR, UNIVERSAL,  
 5.3 - 5.7mm ROUND CABLE

SIZE <b>A3</b>	S&M Part No.: SEE TABLE	DWG NO. <b>C20828</b>	REV B
SCALE N.T.S.	Drafter M.McCROSKEY	Date: 6/20/2019	SHEET 2 OF 2

6 5 4 3 2 1