

4

3

2

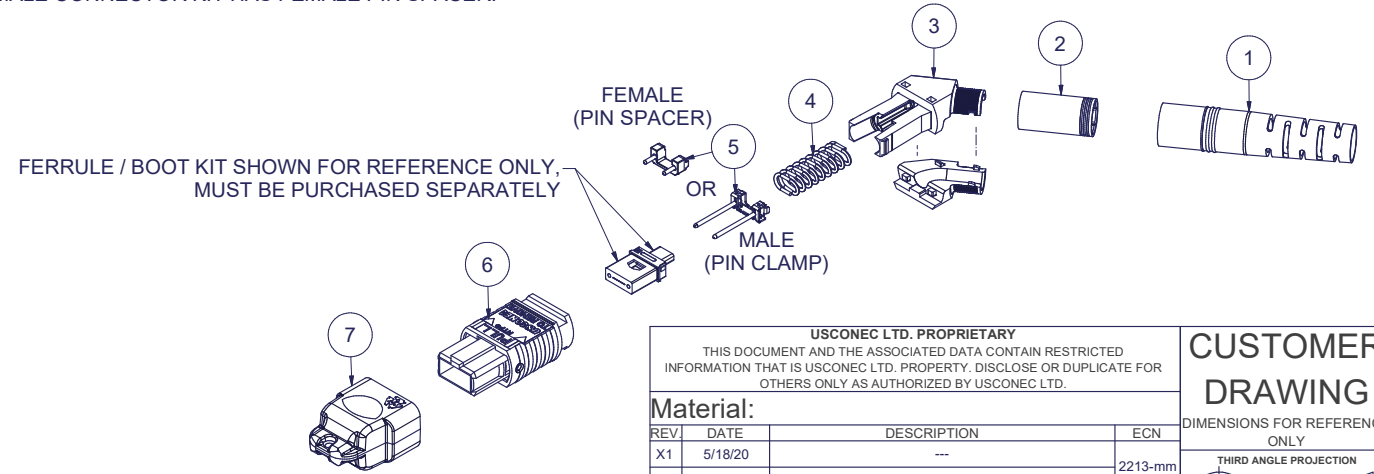
1

Parts List

ITEM	DESCRIPTION	PART NUMBER	QTY	NOTES
1	BOOT, ROUND, 5.0/5.5 CABLE	12978	1	
2	CRIMP BAND, 5.0, ROUND, MTP®	16428	1	
3	SPRING PUSH, UNIVERSAL, 2 PC, ANGLED	19973	1	
4	SPRING, UNIVERSAL, 20N	17698	1	
5	PIN CLAMP or PIN SPACER	SEE KIT TABLE COLUMN A	1	NOTE 1
6	ASSEMBLY, HOUSING, MTP®	SEE KIT TABLE COLUMN B	1	
7	DUST CAP, MTP®	17242	1	

KIT P/N	KIT DESCRIPTION	PERFORMANCE	COLUMN A		COLUMN B	
			PIN CLAMP/SPACER P/N	HSG ASSY P/N	HSG ASSY COLOR	
20805	KIT, MTP®, UNIVERSAL, FEMALE, MM, 5.0 RND, ANGLED SPRING PUSH, HSF, BEIGE	MM	17795	MTP-A12-11	BEIGE	
20806	KIT, MTP®, UNIVERSAL, MALE, MM, 5.0 RND, ANGLED SPRING PUSH, HSF, BEIGE	MM	17799	MTP-A12-11	BEIGE	
20807	KIT, MTP®, UNIVERSAL, FEMALE, MM, 5.0 RND, ANGLED SPRING PUSH, HSF, BLACK	MM	17795	MTP-A12-02	BLACK	
20808	KIT, MTP®, UNIVERSAL, MALE, MM, 5.0 RND, ANGLED SPRING PUSH, HSF, BLACK	MM	17799	MTP-A12-02	BLACK	
20809	KIT, MTP®, UNIVERSAL, FEMALE, MM, 5.0 RND, ANGLED SPRING PUSH, HSF, AQUA	MM or MM MTP Elite®	17795	7871	AQUA	
20810	KIT, MTP®, UNIVERSAL, MALE, MM, 5.0 RND, ANGLED SPRING PUSH, HSF, AQUA	MM	17799	7871	AQUA	
20811	KIT, MTP®, UNIVERSAL, MALE, MM MTP Elite®, 5.0 RND, ANGLED SPRING PUSH, HSF, AQUA	MM MTP Elite®	17800	7871	AQUA	
20812	KIT, MTP®, UNIVERSAL, FEMALE, MM, 5.0 RND, ANGLED SPRING PUSH, HSF, MAGENTA	MM or MM MTP Elite®	17795	13949	MAGENTA	
20813	KIT, MTP®, UNIVERSAL, MALE, MM, 5.0 RND, ANGLED SPRING PUSH, HSF, MAGENTA	MM	17799	13949	MAGENTA	
20814	KIT, MTP®, UNIVERSAL, MALE, MM MTP Elite®, 5.0 RND, ANGLED SPRING PUSH, HSF, MAGENTA	MM MTP Elite®	17800	13949	MAGENTA	
20815	KIT, MTP®, UNIVERSAL, FEMALE, MM, 5.0 RND, ANGLED SPRING PUSH, HSF, HEATHER VIOLET	MM or MM MTP Elite®	17795	16693	HEATHER VIOLET	
20816	KIT, MTP®, UNIVERSAL, MALE, MM, 5.0 RND, ANGLED SPRING PUSH, HSF, HEATHER VIOLET	MM	17799	16693	HEATHER VIOLET	
20817	KIT, MTP®, UNIVERSAL, MALE, MM MTP Elite®, 5.0 RND, ANGLED SPRING PUSH, HSF, HEATHER VIOLET	MM MTP Elite®	17800	16693	HEATHER VIOLET	
20818	KIT, MTP®, UNIVERSAL, FEMALE, MM, 5.0 RND, ANGLED SPRING PUSH, HSF, MUNSELL VIOLET	MM or MM MTP Elite®	17795	16791	MUNSELL VIOLET	
20819	KIT, MTP®, UNIVERSAL, MALE, MM, 5.0 RND, ANGLED SPRING PUSH, HSF, MUNSELL VIOLET	MM	17799	16791	MUNSELL VIOLET	
20820	KIT, MTP®, UNIVERSAL, MALE, MM MTP Elite®, 5.0 RND, ANGLED SPRING PUSH, HSF, MUNSELL VIOLET	MM MTP Elite®	17800	16791	MUNSELL VIOLET	
20821	KIT, MTP®, UNIVERSAL, FEMALE, MM, 5.0 RND, ANGLED SPRING PUSH, HSF, LIME	MM or MM MTP Elite®	17795	18829	LIME	
20822	KIT, MTP®, UNIVERSAL, MALE, MM, 5.0 RND, ANGLED SPRING PUSH, HSF, LIME	MM	17799	18829	LIME	
20823	KIT, MTP®, UNIVERSAL, MALE, MM MTP Elite®, 5.0 RND, ANGLED SPRING PUSH, HSF, LIME	MM MTP Elite®	17800	18829	LIME	
20824	KIT, MTP®, UNIVERSAL, FEMALE, SM, 5.0 RND, ANGLED SPRING PUSH, HSF, GREEN	SM	17795	16007	GREEN	
20825	KIT, MTP®, UNIVERSAL, MALE, SM, 5.0 RND, ANGLED SPRING PUSH, HSF, GREEN	SM	17800	16007	GREEN	
20826	KIT, MTP®, UNIVERSAL, FEMALE, SM MTP Elite®, 5.0 RND, ANGLED SPRING PUSH, HSF, YELLOW	SM MTP Elite®	17795	16918	YELLOW	
20827	KIT, MTP®, UNIVERSAL, MALE, SM MTP Elite®, 5.0 RND, ANGLED SPRING PUSH, HSF, YELLOW	SM MTP Elite®	17801	16918	YELLOW	

NOTES:
1. MALE CONNECTOR KIT HAS PIN CLAMP ASSEMBLY.
FEMALE CONNECTOR KIT HAS FEMALE PIN SPACER.



USCONEC LTD. PROPRIETARY
THIS DOCUMENT AND THE ASSOCIATED DATA CONTAIN RESTRICTED INFORMATION THAT IS USCONEC LTD. PROPERTY. DISCLOSE OR DUPLICATE FOR OTHERS ONLY AS AUTHORIZED BY USCONEC LTD.

Material:

REV	DATE	DESCRIPTION	ECN
X1	5/18/20	---	2213-mm
A	5/20/20	INITIAL RELEASE	

CUSTOMER DRAWING

DIMENSIONS FOR REFERENCE ONLY

THIRD ANGLE PROJECTION

METRIC/mm

▲ DENOTES CRITICAL DIMENSION

Hickory, NC
800-769-0944
www.usconec.com

USCONEC

TITLE
KIT, MTP® CONN., UNIV., 4.8 - 5.2mm RND CBL, ANGLED SPRING PUSH, HIGH SPRING FORCE

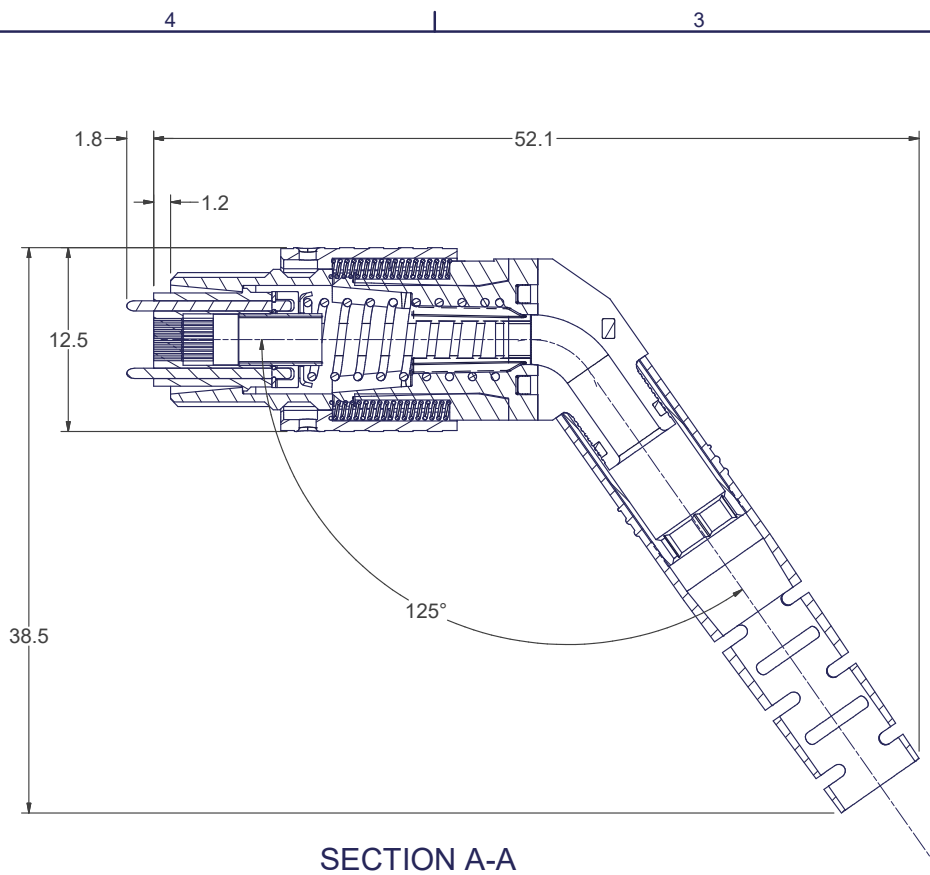
SIZE	S&M Part No.:	DWG NO.	REV
B	SEE TABLE	C20805	A
SCALE	Drafter	Date:	SHEET
N.T.S.	M.McCROSKEY	5/18/2020	1 OF 2

4

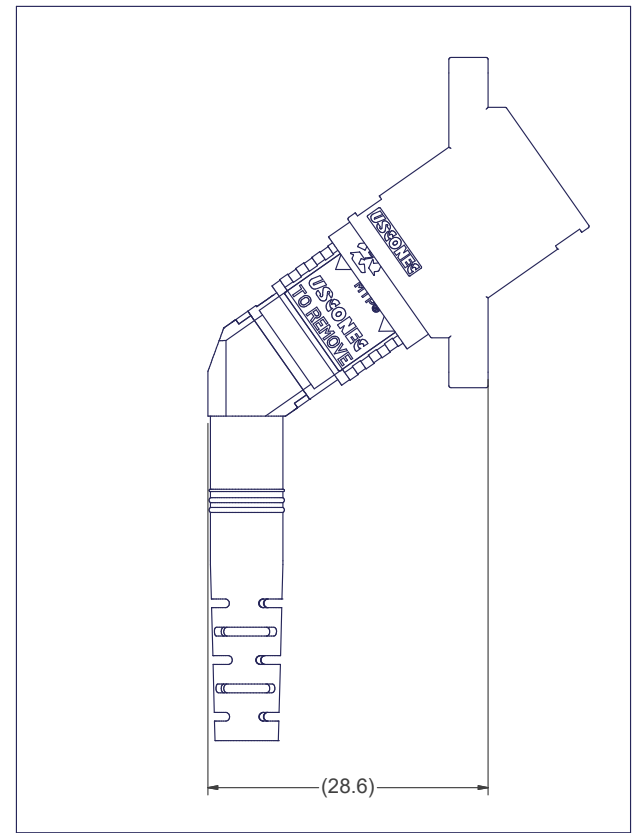
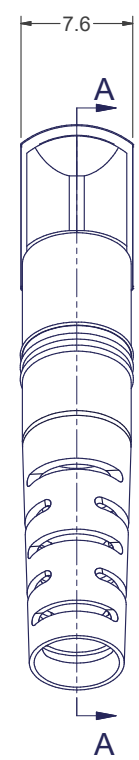
3

2

1



SECTION A-A



MTP® CONNECTOR SHOWN WITH ANGLED MTP® ADAPTER
(ANGLED MTP® ADAPTER SOLD SEPARATELY)

USCONEC LTD. PROPRIETARY
THIS DOCUMENT AND THE ASSOCIATED DATA CONTAIN RESTRICTED INFORMATION THAT IS USCONEC LTD. PROPERTY. DISCLOSE OR DUPLICATE FOR OTHERS ONLY AS AUTHORIZED BY USCONEC LTD.

Material:

REV.	DATE	DESCRIPTION	ECN

CUSTOMER DRAWING

DIMENSIONS FOR REFERENCE ONLY

THIRD ANGLE PROJECTION

METRIC/mm

▲ DENOTES CRITICAL DIMENSION

USCONEC
Hickory, NC
800-769-0944
www.usconec.com

TITLE
KIT, MTP® CONN., UNIV., 4.8 - 5.2mm RND CBL,
ANGLED SPRING PUSH, HIGH SPRING FORCE

SIZE B	S&M Part No.: SEE SHEET 1	DWG NO. C20805	REV A
SCALE N.T.S.	Drafter M.McCROSKEY	Date: 5/18/2020	SHEET 2 OF 2