

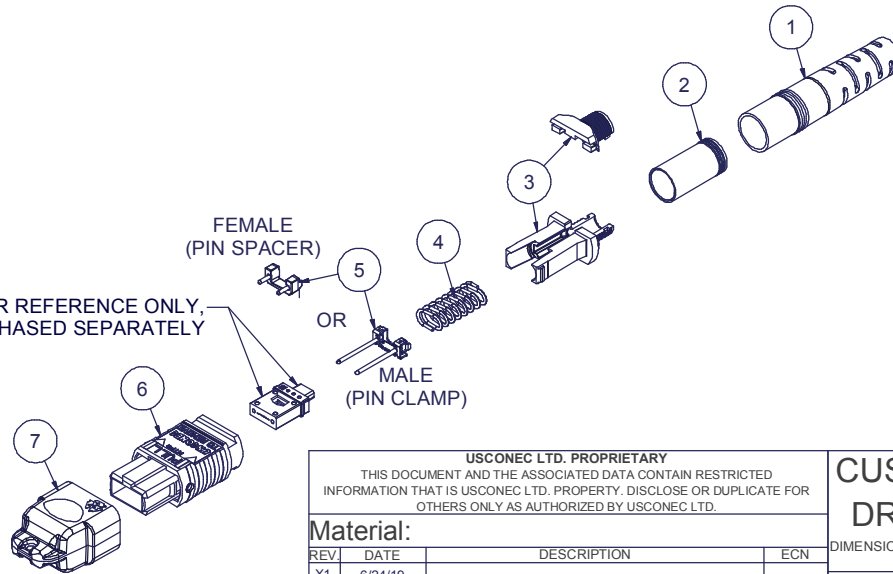
Parts List				
ITEM	DESCRIPTION	PART NUMBER	QTY	NOTES
1	BOOT, ROUND, 5.0/5.5 CABLE	12978	1	
2	CRIMP BAND, 5.0, ROUND, MTP®	16428	1	
3	SPRING PUSH, UNIVERSAL, 2 PC, 4.0 - 5.5mm RND, MTP®	19740	1	
4	SPRING, UNIVERSAL, 9.8N, MTP®	17167	1	
5	PIN CLAMP or PIN SPACER	SEE KIT TABLE COLUMN A	1	NOTE 1
6	ASSEMBLY, HOUSING, MTP®	SEE KIT TABLE COLUMN B	1	
7	DUST CAP, MTP®	17242	1	

NOTES:

1. MALE CONNECTOR KIT HAS PIN CLAMP ASSEMBLY, FEMALE CONNECTOR KIT HAS FEMALE PIN SPACER

KIT P/N	KIT DESCRIPTION	PERFORMANCE	COLUMN A PIN CLAMP/SPACER PN	COLUMN B HSG ASSY PN	HSG ASSY COLOR
20736	KIT, MTP®, UNIV., FEMALE, MM, 5.0mm RND, BEIGE	MM	17795	MTP-A12-11	BEIGE
20737	KIT, MTP®, UNIV., MALE, MM, 5.0mm RND, BEIGE	MM	17799	MTP-A12-11	BEIGE
20738	KIT, MTP®, UNIV., FEMALE, MM, 5.0mm RND, BLACK	MM	17795	MTP-A12-02	BLACK
20739	KIT, MTP®, UNIV., MALE, MM, 5.0mm RND, BLACK	MM	17799	MTP-A12-02	BLACK
20740	KIT, MTP®, UNIV., FEMALE, MM, 5.0mm RND, AQUA	MM or MM MTP Elite®	17795	7871	AQUA
20741	KIT, MTP®, UNIV., MALE, MM, 5.0mm RND, AQUA	MM	17799	7871	AQUA
20742	KIT, MTP®, UNIV., MALE, MM MTP Elite®, 5.0mm RND, AQUA	MM MTP Elite®	17800	7871	AQUA
20743	KIT, MTP®, UNIV., FEMALE, MM, 5.0mm RND, MAGENTA	MM or MM MTP Elite®	17795	13949	MAGENTA
20744	KIT, MTP®, UNIV., MALE, MM, 5.0mm RND, MAGENTA	MM	17799	13949	MAGENTA
20745	KIT, MTP®, UNIV., MALE, MM MTP Elite®, 5.0mm RND, MAGENTA	MM MTP Elite®	17800	13949	MAGENTA
20746	KIT, MTP®, UNIV., FEMALE, MM, 5.0mm RND, HEATHER VIOLET	MM or MM MTP Elite®	17795	16693	HEATHER VIOLET
20747	KIT, MTP®, UNIV., MALE, MM, 5.0mm RND, HEATHER VIOLET	MM	17799	16693	HEATHER VIOLET
20748	KIT, MTP®, UNIV., MALE, MM MTP Elite®, 5.0mm RND, HEATHER VIOLET	MM MTP Elite®	17800	16693	HEATHER VIOLET
20749	KIT, MTP®, UNIV., FEMALE, MM, 5.0mm RND, MUNSELL VIOLET	MM or MM MTP Elite®	17795	16791	MUNSELL VIOLET
20750	KIT, MTP®, UNIV., MALE, MM, 5.0mm RND, MUNSELL VIOLET	MM	17799	16791	MUNSELL VIOLET
20751	KIT, MTP®, UNIV., MALE, MM MTP Elite®, 5.0mm RND, MUNSELL VIOLET	MM MTP Elite®	17800	16791	MUNSELL VIOLET
20752	KIT, MTP®, UNIV., FEMALE, MM, 5.0mm RND, LIME	MM or MM MTP Elite®	17795	18829	LIME
20753	KIT, MTP®, UNIV., MALE, MM, 5.0mm RND, LIME	MM	17799	18829	LIME
20754	KIT, MTP®, UNIV., MALE, MM MTP Elite®, 5.0mm RND, LIME	MM MTP Elite®	17800	18829	LIME
20755	KIT, MTP®, UNIV., FEMALE, SM, 5.0mm RND, GREEN	SM	17795	16007	GREEN
20756	KIT, MTP®, UNIV., MALE, SM, 5.0mm RND, GREEN	SM	17800	16007	GREEN
20757	KIT, MTP®, UNIV., FEMALE, SM MTP Elite®, 5.0mm RND, YELLOW	SM MTP Elite®	17795	16918	YELLOW
20758	KIT, MTP®, UNIV., MALE, SM MTP Elite®, 5.0mm RND, YELLOW	SM MTP Elite®	17801	16918	YELLOW

FERRULE / BOOT KIT SHOWN FOR REFERENCE ONLY, MUST BE PURCHASED SEPARATELY



USCONEC LTD. PROPRIETARY
THIS DOCUMENT AND THE ASSOCIATED DATA CONTAIN RESTRICTED INFORMATION THAT IS USCONEC LTD. PROPERTY. DISCLOSE OR DUPLICATE FOR OTHERS ONLY AS AUTHORIZED BY USCONEC LTD.

Material:

REV.	DATE	DESCRIPTION	ECN
X1	6/24/19	-	2225-mm
A	1/14/20	INITIAL RELEASE	

CUSTOMER DRAWING

DIMENSIONS FOR REFERENCE ONLY

THIRD ANGLE PROJECTION

METRIC/mm

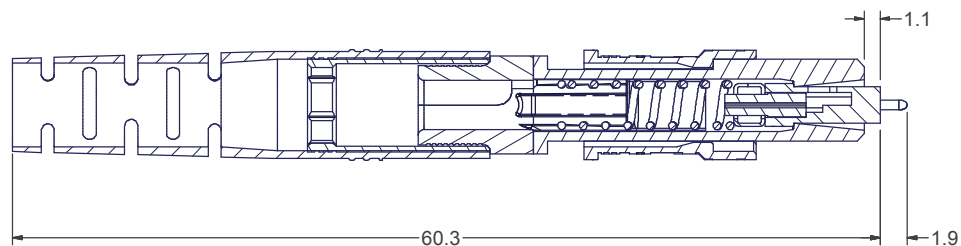
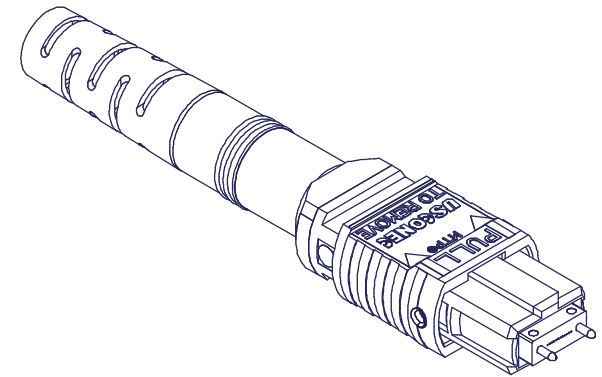
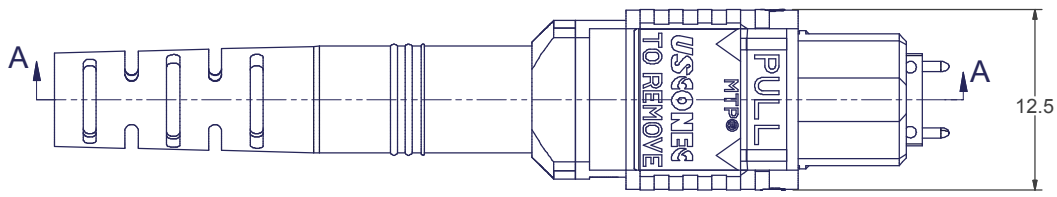
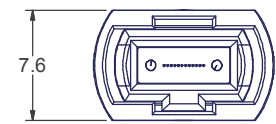
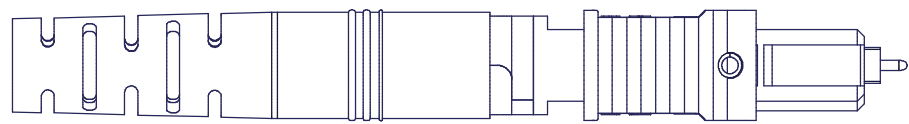
▲ DENOTES CRITICAL DIMENSION

Hickory, NC
800-769-0944
www.usconec.com

USCONEC

TITLE
KIT, MTP® CONNECTOR, UNIVERSAL,
4.8 - 5.2mm ROUND CABLE

SIZE A3	S&M Part No.: SEE TABLE	DWG NO. C20736	REV A
SCALE N.T.S.	Drafter M. McCROSKEY	Date 6/24/2019	SHEET 1 OF 2



SECTION A-A

▲ DENOTES CRITICAL DIMENSION

USCONEC LTD. PROPRIETARY
 THIS DOCUMENT AND THE ASSOCIATED DATA CONTAIN RESTRICTED INFORMATION THAT IS USCONEC LTD. PROPERTY. DISCLOSE OR DUPLICATE FOR OTHERS ONLY AS AUTHORIZED BY USCONEC LTD.

Material:

REV.	DATE	DESCRIPTION	ECN

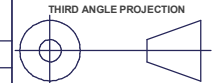
CUSTOMER DRAWING



Hickory, NC
 800-769-0944
www.usconec.com

DIMENSIONS FOR REFERENCE ONLY

TITLE
 KIT, MTP® CONNECTOR, UNIVERSAL,
 4.8 - 5.2mm ROUND CABLE



SIZE | S&M Part No.: | DWG NO.
A3 | SEE TABLE | **C20736** | REV. **A**

METRIC/mm

SCALE | Drafter | Date: | SHEET | OF 2
 N.T.S. | M. McCROSKEY | 6/24/2019 | 2 | 2