

4

3

2

1

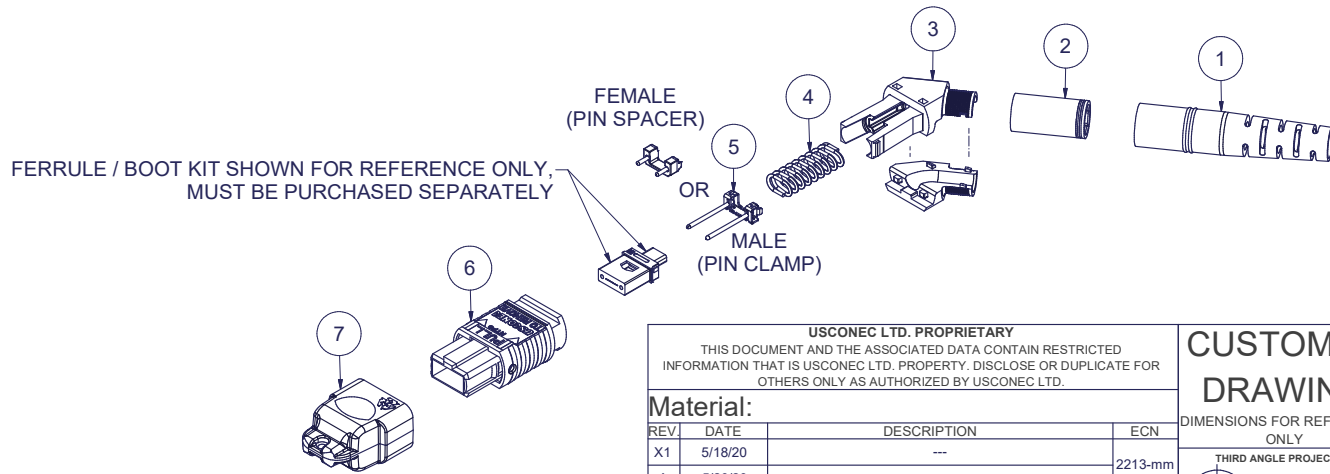
Parts List

ITEM	DESCRIPTION	PART NUMBER	QTY	NOTES
1	BOOT, ROUND, 4.5 mm CABLE	13168	1	
2	CRIMP BAND, 4.5, ROUND, MTP®	16427	1	
3	SPRING PUSH, UNIVERSAL, 2 PC, ANGLED	19973	1	
4	SPRING, UNIVERSAL, 20N	17698	1	
5	PIN CLAMP or PIN SPACER	SEE KIT TABLE COLUMN A	1	NOTE 1
6	ASSEMBLY, HOUSING, MTP®	SEE KIT TABLE COLUMN B	1	
7	DUST CAP, MTP®	17242	1	

KIT P/N	KIT DESCRIPTION	PERFORMANCE	COLUMN A PIN CLAMP/ SPACER P/N	COLUMN B HSG ASSY P/N	HSG ASSY COLOR
20712	KIT, MTP®, UNIVERSAL, FEMALE, MM, 4.5 RND, ANGLED SPRING PUSH, HSF, BEIGE	MM	17795	MTP-A12-11	BEIGE
20713	KIT, MTP®, UNIVERSAL, MALE, MM, 4.5 RND, ANGLED SPRING PUSH, HSF, BEIGE	MM	17799	MTP-A12-11	BEIGE
20714	KIT, MTP®, UNIVERSAL, FEMALE, MM, 4.5 RND, ANGLED SPRING PUSH, HSF, BLACK	MM	17795	MTP-A12-02	BLACK
20715	KIT, MTP®, UNIVERSAL, MALE, MM, 4.5 RND, ANGLED SPRING PUSH, HSF, BLACK	MM	17799	MTP-A12-02	BLACK
20716	KIT, MTP®, UNIVERSAL, FEMALE, MM, 4.5 RND, ANGLED SPRING PUSH, HSF, AQUA	MM or MM MTP Elite®	17795	7871	AQUA
20717	KIT, MTP®, UNIVERSAL, MALE, MM, 4.5 RND, ANGLED SPRING PUSH, HSF, AQUA	MM	17799	7871	AQUA
20718	KIT, MTP®, UNIVERSAL, MALE, MM MTP Elite®, 4.5 RND, ANGLED SPRING PUSH, HSF, AQUA	MM MTP Elite®	17800	7871	AQUA
20719	KIT, MTP®, UNIVERSAL, FEMALE, MM, 4.5 RND, ANGLED SPRING PUSH, HSF, MAGENTA	MM or MM MTP Elite®	17795	13949	MAGENTA
20720	KIT, MTP®, UNIVERSAL, MALE, MM, 4.5 RND, ANGLED SPRING PUSH, HSF, MAGENTA	MM	17799	13949	MAGENTA
20721	KIT, MTP®, UNIVERSAL, MALE, MM MTP Elite®, 4.5 RND, ANGLED SPRING PUSH, HSF, MAGENTA	MM MTP Elite®	17800	13949	MAGENTA
20722	KIT, MTP®, UNIVERSAL, FEMALE, MM, 4.5 RND, ANGLED SPRING PUSH, HSF, HEATHER VIOLET	MM or MM MTP Elite®	17795	16693	HEATHER VIOLET
20723	KIT, MTP®, UNIVERSAL, MALE, MM, 4.5 RND, ANGLED SPRING PUSH, HSF, HEATHER VIOLET	MM	17799	16693	HEATHER VIOLET
20724	KIT, MTP®, UNIVERSAL, MALE, MM MTP Elite®, 4.5 RND, ANGLED SPRING PUSH, HSF, HEATHER VIOLET	MM MTP Elite®	17800	16693	HEATHER VIOLET
20725	KIT, MTP®, UNIVERSAL, FEMALE, MM, 4.5 RND, ANGLED SPRING PUSH, HSF, MUNSELL VIOLET	MM or MM MTP Elite®	17795	16791	MUNSELL VIOLET
20726	KIT, MTP®, UNIVERSAL, MALE, MM, 4.5 RND, ANGLED SPRING PUSH, HSF, MUNSELL VIOLET	MM	17799	16791	MUNSELL VIOLET
20727	KIT, MTP®, UNIVERSAL, MALE, MM MTP Elite®, 4.5 RND, ANGLED SPRING PUSH, HSF, MUNSELL VIOLET	MM MTP Elite®	17800	16791	MUNSELL VIOLET
20728	KIT, MTP®, UNIVERSAL, FEMALE, MM, 4.5 RND, ANGLED SPRING PUSH, HSF, LIME	MM or MM MTP Elite®	17795	18829	LIME
20729	KIT, MTP®, UNIVERSAL, MALE, MM, 4.5 RND, ANGLED SPRING PUSH, HSF, LIME	MM	17799	18829	LIME
20730	KIT, MTP®, UNIVERSAL, MALE, MM MTP Elite®, 4.5 RND, ANGLED SPRING PUSH, HSF, LIME	MM MTP Elite®	17800	18829	LIME
20731	KIT, MTP®, UNIVERSAL, FEMALE, SM, 4.5 RND, ANGLED SPRING PUSH, HSF, GREEN	SM	17795	16007	GREEN
20732	KIT, MTP®, UNIVERSAL, MALE, SM, 4.5 RND, ANGLED SPRING PUSH, HSF, GREEN	SM	17800	16007	GREEN
20733	KIT, MTP®, UNIVERSAL, FEMALE, SM MTP Elite®, 4.5 RND, ANGLED SPRING PUSH, HSF, YELLOW	SM MTP Elite®	17795	16918	YELLOW
20734	KIT, MTP®, UNIVERSAL, MALE, SM MTP Elite®, 4.5 RND, ANGLED SPRING PUSH, HSF, YELLOW	SM MTP Elite®	17801	16918	YELLOW

NOTES:

1. MALE CONNECTOR KIT HAS PIN CLAMP ASSEMBLY. FEMALE CONNECTOR KIT HAS FEMALE PIN SPACER.



FERRULE / BOOT KIT SHOWN FOR REFERENCE ONLY, MUST BE PURCHASED SEPARATELY

▲ DENOTES CRITICAL DIMENSION

USCONEC LTD. PROPRIETARY
THIS DOCUMENT AND THE ASSOCIATED DATA CONTAIN RESTRICTED INFORMATION THAT IS USCONEC LTD. PROPERTY. DISCLOSE OR DUPLICATE FOR OTHERS ONLY AS AUTHORIZED BY USCONEC LTD.

Material:

REV	DATE	DESCRIPTION	ECN
X1	5/18/20	---	2213-mm
A	5/20/20	INITIAL RELEASE	

CUSTOMER DRAWING

DIMENSIONS FOR REFERENCE ONLY

THIRD ANGLE PROJECTION

METRIC/mm

USCONEC Hickory, NC
800-769-0944
www.usconec.com

TITLE
KIT, MTP® CONN., UNIV., 4.3 - 4.7mm RND CBL, ANGLED SPRING PUSH, HIGH SPRING FORCE

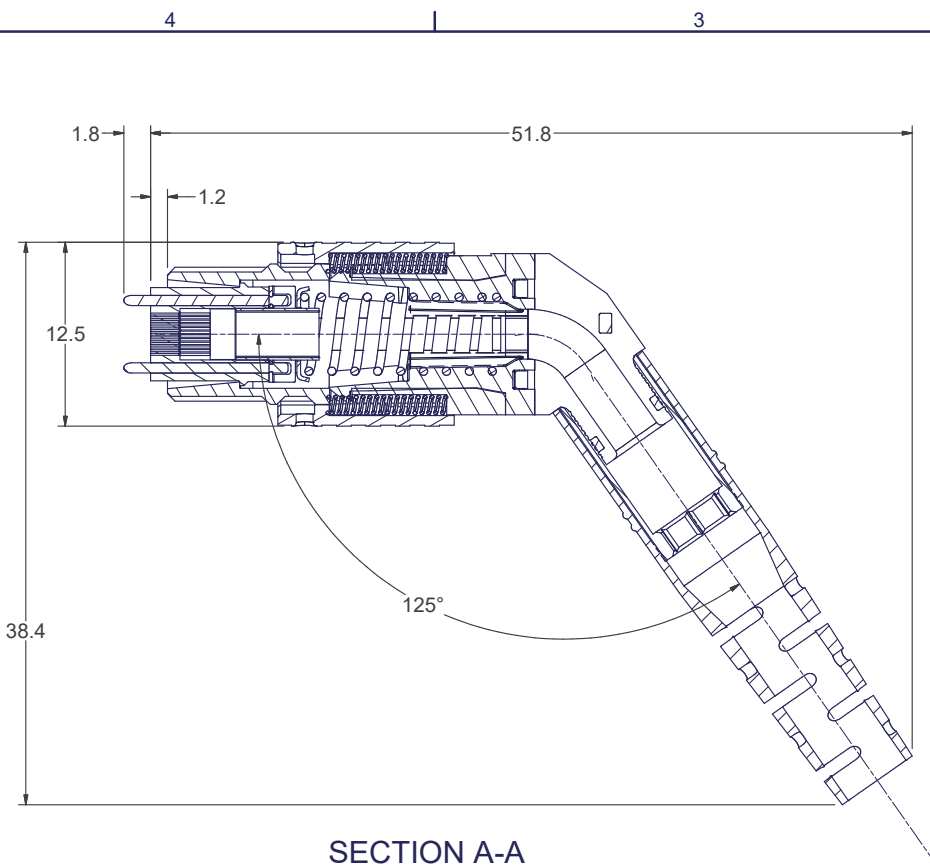
SIZE B	S&M Part No.: SEE TABLE	DWG NO. C20712	REV A
SCALE N.T.S.	Drafter M.McCROSKEY	Date 5/18/2020	SHEET 1 OF 2

4

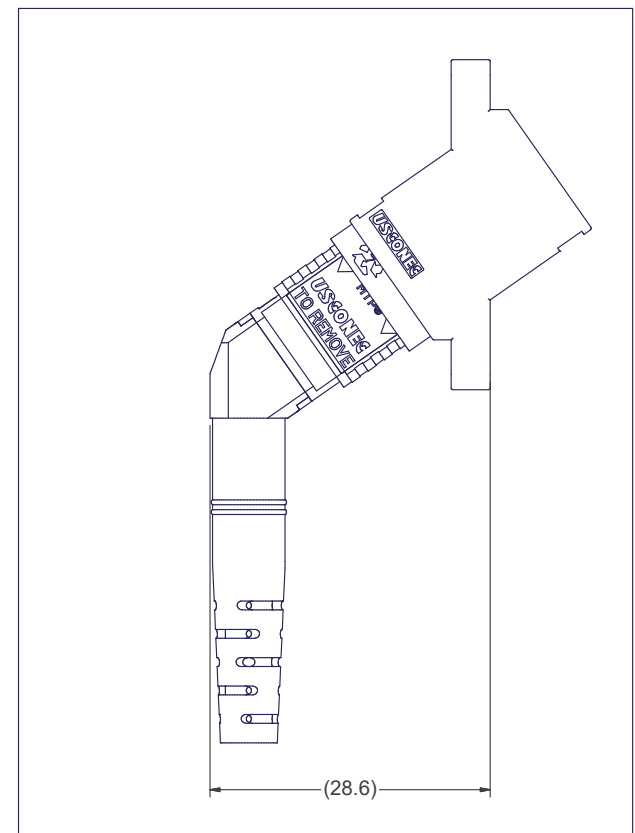
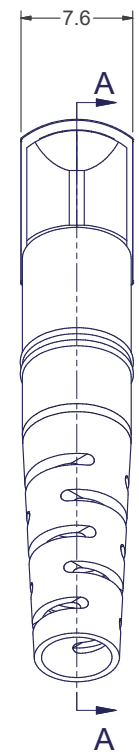
3

2

1



SECTION A-A



MTP® CONNECTOR SHOWN WITH ANGLED MTP® ADAPTER (ANGLED MTP® ADAPTER SOLD SEPARATELY)

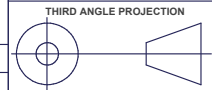
USCONEC LTD. PROPRIETARY
 THIS DOCUMENT AND THE ASSOCIATED DATA CONTAIN RESTRICTED INFORMATION THAT IS USCONEC LTD. PROPERTY. DISCLOSE OR DUPLICATE FOR OTHERS ONLY AS AUTHORIZED BY USCONEC LTD.

Material:

REV.	DATE	DESCRIPTION	ECN

CUSTOMER DRAWING

DIMENSIONS FOR REFERENCE ONLY



METRIC/mm

▲ DENOTES CRITICAL DIMENSION

USCONEC Hickory, NC
 800-769-0944
 www.usconec.com

TITLE
 KIT, MTP® CONN., UNIV., 4.3 - 4.7mm RND CBL, ANGLED SPRING PUSH, HIGH SPRING FORCE

SIZE B	S&M Part No.: SEE SHEET 1	DWG NO. C20712	REV A
SCALE N.T.S.	Drafter M.McCROSKY	Date 5/18/2020	SHEET 2 OF 2