

4

3

2

1

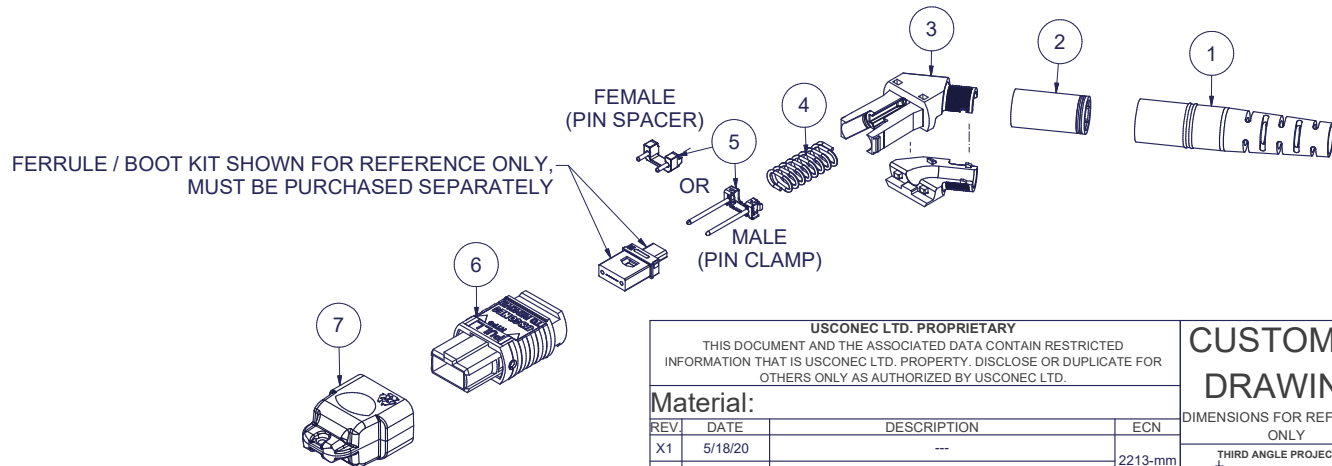
Parts List

ITEM	DESCRIPTION	PART NUMBER	QTY	NOTES
1	BOOT, ROUND, 4.5 mm CABLE	13168	1	
2	CRIMP BAND, 4.5, ROUND, MTP®	16427	1	
3	SPRING PUSH, UNIVERSAL, 2 PC, ANGLED	19973	1	
4	SPRING, UNIVERSAL, 9.8N, MTP®	17167	1	
5	PIN CLAM or PIN SPACER	SEE KIT TABLE COLUMN A	1	NOTE 1
6	ASSEMBLY, HOUSING, MTP®	SEE KIT TABLE COLUMN B	1	
7	DUST CAP, MTP®	17242	1	

KIT P/N	KIT DESCRIPTION	PERFORMANCE	COLUMN A PIN CLAMP/ SPACER P/N	COLUMN B HSG ASSY P/N	HSG ASSY COLOR
20689	KIT, MTP®, UNIVERSAL, FEMALE, MM, 4.5 RND, ANGLED SPRING PUSH, BEIGE	MM	17795	MTP-A12-11	BEIGE
20690	KIT, MTP®, UNIVERSAL, MALE, MM, 4.5 RND, ANGLED SPRING PUSH, BEIGE	MM	17799	MTP-A12-11	BEIGE
20691	KIT, MTP®, UNIVERSAL, FEMALE, MM, 4.5 RND, ANGLED SPRING PUSH, BLACK	MM	17795	MTP-A12-02	BLACK
20692	KIT, MTP®, UNIVERSAL, MALE, MM, 4.5 RND, ANGLED SPRING PUSH, BLACK	MM	17799	MTP-A12-02	BLACK
20693	KIT, MTP®, UNIVERSAL, FEMALE, MM, 4.5 RND, ANGLED SPRING PUSH, AQUA	MM or MM MTP Elite®	17795	7871	AQUA
20694	KIT, MTP®, UNIVERSAL, MALE, MM, 4.5 RND, ANGLED SPRING PUSH, AQUA	MM	17799	7871	AQUA
20695	KIT, MTP®, UNIVERSAL, MALE, MM MTP Elite®, 4.5 RND, ANGLED SPRING PUSH, AQUA	MM MTP Elite®	17800	7871	AQUA
20696	KIT, MTP®, UNIVERSAL, FEMALE, MM, 4.5 RND, ANGLED SPRING PUSH, MAGENTA	MM or MM MTP Elite®	17795	13949	MAGENTA
20697	KIT, MTP®, UNIVERSAL, MALE, MM, 4.5 RND, ANGLED SPRING PUSH, MAGENTA	MM	17799	13949	MAGENTA
20698	KIT, MTP®, UNIVERSAL, MALE, MM MTP Elite®, 4.5 RND, ANGLED SPRING PUSH, MAGENTA	MM MTP Elite®	17800	13949	MAGENTA
20699	KIT, MTP®, UNIVERSAL, FEMALE, MM, 4.5 RND, ANGLED SPRING PUSH, HEATHER VIOLET	MM or MM MTP Elite®	17795	16693	HEATHER VIOLET
20700	KIT, MTP®, UNIVERSAL, MALE, MM, 4.5 RND, ANGLED SPRING PUSH, HEATHER VIOLET	MM	17799	16693	HEATHER VIOLET
20701	KIT, MTP®, UNIVERSAL, MALE, MM MTP Elite®, 4.5 RND, ANGLED SPRING PUSH, HEATHER VIOLET	MM MTP Elite®	17800	16693	HEATHER VIOLET
20702	KIT, MTP®, UNIVERSAL, FEMALE, MM, 4.5 RND, ANGLED SPRING PUSH, MUNSELL VIOLET	MM or MM MTP Elite®	17795	16791	MUNSELL VIOLET
20703	KIT, MTP®, UNIVERSAL, MALE, MM, 4.5 RND, ANGLED SPRING PUSH, MUNSELL VIOLET	MM	17799	16791	MUNSELL VIOLET
20704	KIT, MTP®, UNIVERSAL, MALE, MM MTP Elite®, 4.5 RND, ANGLED SPRING PUSH, MUNSELL VIOLET	MM MTP Elite®	17800	16791	MUNSELL VIOLET
20705	KIT, MTP®, UNIVERSAL, FEMALE, MM, 4.5 RND, ANGLED SPRING PUSH, LIME	MM or MM MTP Elite®	17795	18829	LIME
20706	KIT, MTP®, UNIVERSAL, MALE, MM, 4.5 RND, ANGLED SPRING PUSH, LIME	MM	17799	18829	LIME
20707	KIT, MTP®, UNIVERSAL, MALE, MM MTP Elite®, 4.5 RND, ANGLED SPRING PUSH, LIME	MM MTP Elite®	17800	18829	LIME
20708	KIT, MTP®, UNIVERSAL, FEMALE, SM, 4.5 RND, ANGLED SPRING PUSH, GREEN	SM	17795	16007	GREEN
20709	KIT, MTP®, UNIVERSAL, MALE, SM, 4.5 RND, ANGLED SPRING PUSH, GREEN	SM	17800	16007	GREEN
20710	KIT, MTP®, UNIVERSAL, FEMALE, SM MTP Elite®, 4.5 RND, ANGLED SPRING PUSH, YELLOW	SM MTP Elite®	17795	16918	YELLOW
20711	KIT, MTP®, UNIVERSAL, MALE, SM MTP Elite®, 4.5 RND, ANGLED SPRING PUSH, YELLOW	SM MTP Elite®	17801	16918	YELLOW

NOTES:

1. MALE CONNECTOR KIT HAS PIN CLAMP ASSEMBLY.
FEMALE CONNECTOR KIT HAS FEMALE PIN SPACER.



▲ DENOTES CRITICAL DIMENSION

USCONEC LTD. PROPRIETARY			
THIS DOCUMENT AND THE ASSOCIATED DATA CONTAIN RESTRICTED INFORMATION THAT IS USCONEC LTD. PROPERTY. DISCLOSE OR DUPLICATE FOR OTHERS ONLY AS AUTHORIZED BY USCONEC LTD.			
Material:			
REV	DATE	DESCRIPTION	ECN
X1	5/18/20	---	2213-mm
A	5/20/20	INITIAL RELEASE	

CUSTOMER DRAWING

DIMENSIONS FOR REFERENCE ONLY

THIRD ANGLE PROJECTION



METRIC/mm

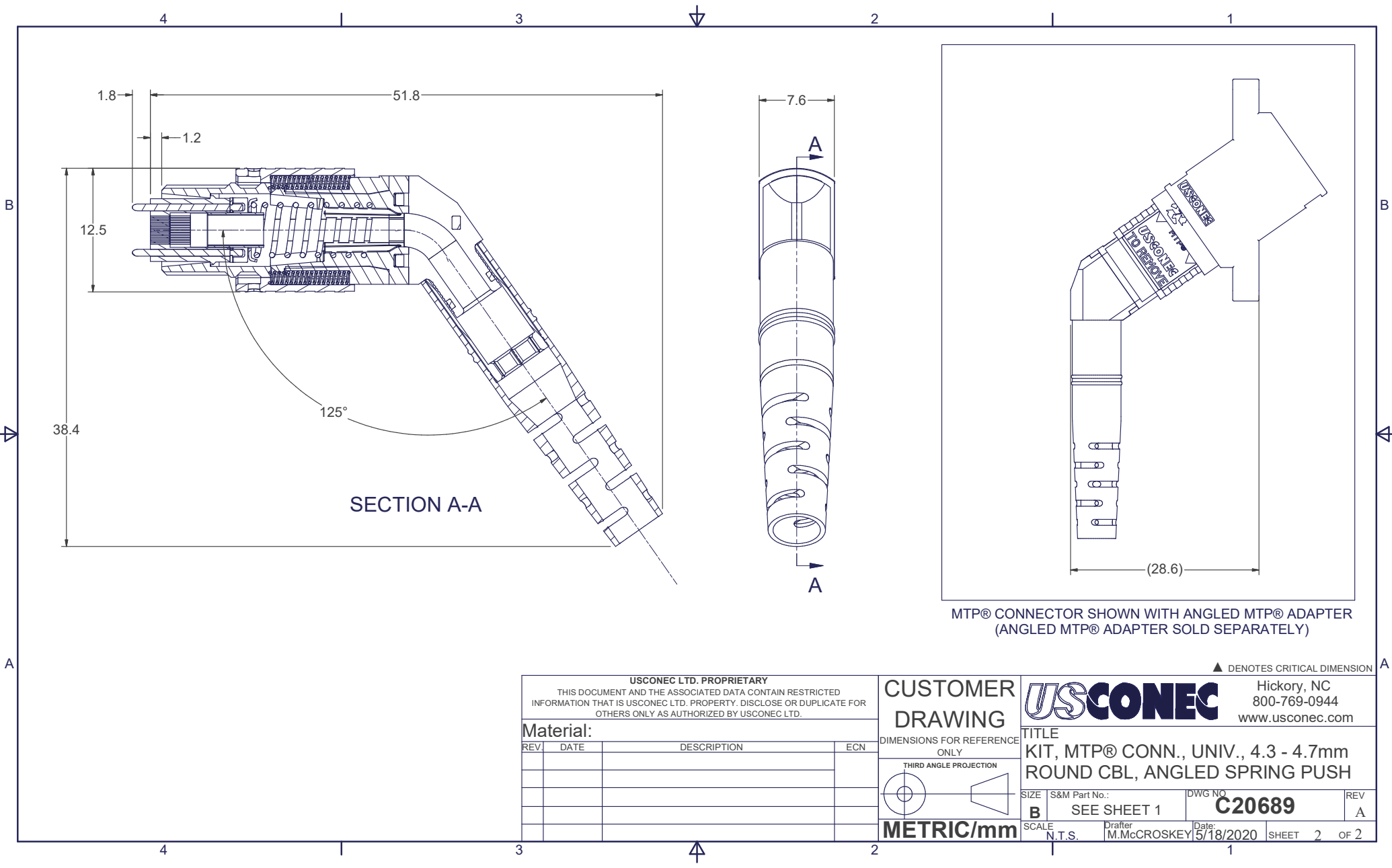
USCONEC		Hickory, NC 800-769-0944 www.usconec.com	
TITLE KIT, MTP® CONN., UNIV., 4.3 - 4.7mm ROUND CBL, ANGLED SPRING PUSH			
SIZE B	S&M Part No.: SEE TABLE	DWG NO. C20689	REV A
SCALE N.T.S.	Drafter M.McCROSKEY	Date 5/18/2020	SHEET 1 OF 2

4

3

2

1



MTP® CONNECTOR SHOWN WITH ANGLED MTP® ADAPTER
(ANGLED MTP® ADAPTER SOLD SEPARATELY)

▲ DENOTES CRITICAL DIMENSION

USCONEC LTD. PROPRIETARY
THIS DOCUMENT AND THE ASSOCIATED DATA CONTAIN RESTRICTED INFORMATION THAT IS USCONEC LTD. PROPERTY. DISCLOSE OR DUPLICATE FOR OTHERS ONLY AS AUTHORIZED BY USCONEC LTD.

Material:

REV.	DATE	DESCRIPTION	ECN

CUSTOMER DRAWING

DIMENSIONS FOR REFERENCE ONLY

THIRD ANGLE PROJECTION

METRIC/mm

USCONEC

Hickory, NC
800-769-0944
www.usconec.com

TITLE
KIT, MTP® CONN., UNIV., 4.3 - 4.7mm ROUND CBL, ANGLED SPRING PUSH

SIZE B	S&M Part No.: SEE SHEET 1	DWG NO. C20689	REV A
SCALE N.T.S.	Drafter M.McCROSKEY	Date: 5/18/2020	SHEET 2 OF 2