

4

3

2

1

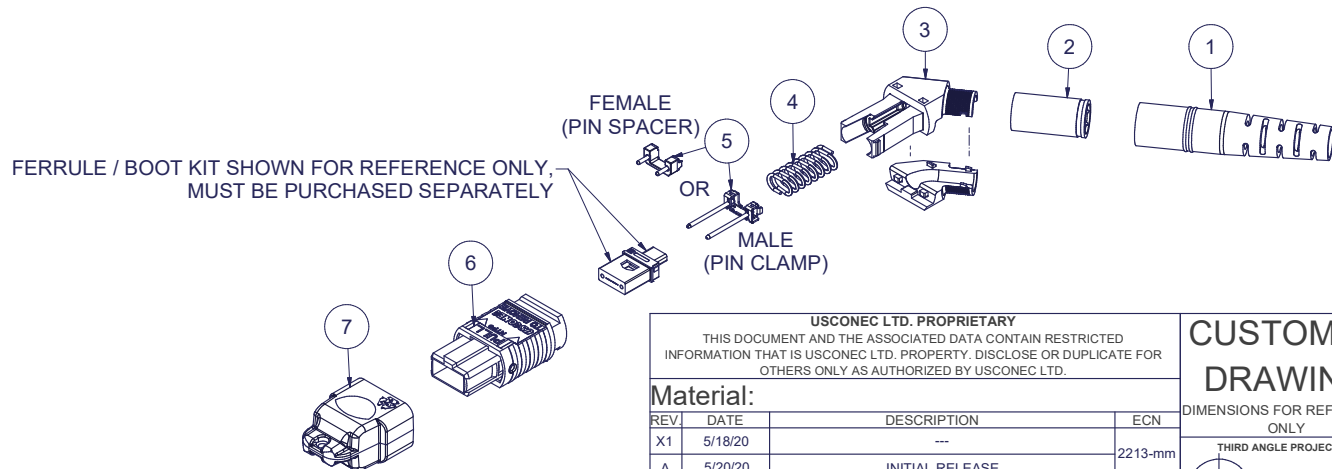
Parts List

ITEM	DESCRIPTION	PART NUMBER	QTY	NOTES
1	BOOT, ROUND, 4.5 mm CABLE	13168	1	
2	CRIMP BAND, 4.0, ROUND, MTP® & MXC®	16543	1	
3	SPRING PUSH, UNIVERSAL, 2 PC, ANGLED	19973	1	
4	SPRING, UNIVERSAL, 9.8N, MTP®	17167	1	
5	PIN CLAMP or PIN SPACER	SEE KIT TABLE COLUMN A	1	NOTE 1
6	ASSEMBLY, HOUSING, MTP®	SEE KIT TABLE COLUMN B	1	
7	DUST CAP, MTP®	17242	1	

KIT P/N	KIT DESCRIPTION	PERFORMANCE	COLUMN A PIN CLAMP/ SPACER P/N	COLUMN B HSG ASSY P/N	HSG ASSY COLOR
20594	KIT, MTP®, UNIVERSAL, FEMALE, MM, 4.0 RND, ANGLED SPRING PUSH, BEIGE	MM	17795	MTP-A12-11	BEIGE
20595	KIT, MTP®, UNIVERSAL, MALE, MM, 4.0 RND, ANGLED SPRING PUSH, BEIGE	MM	17799	MTP-A12-11	BEIGE
20596	KIT, MTP®, UNIVERSAL, FEMALE, MM, 4.0 RND, ANGLED SPRING PUSH, BLACK	MM	17795	MTP-A12-02	BLACK
20597	KIT, MTP®, UNIVERSAL, MALE, MM, 4.0 RND, ANGLED SPRING PUSH, BLACK	MM	17799	MTP-A12-02	BLACK
20598	KIT, MTP®, UNIVERSAL, FEMALE, MM, 4.0 RND, ANGLED SPRING PUSH, AQUA	MM or MM MTP Elite®	17795	7871	AQUA
20599	KIT, MTP®, UNIVERSAL, MALE, MM, 4.0 RND, ANGLED SPRING PUSH, AQUA	MM	17799	7871	AQUA
20600	KIT, MTP®, UNIVERSAL, MALE, MM MTP Elite®, 4.0 RND, ANGLED SPRING PUSH, AQUA	MM MTP Elite®	17800	7871	AQUA
20601	KIT, MTP®, UNIVERSAL, FEMALE, MM, 4.0 RND, ANGLED SPRING PUSH, MAGENTA	MM or MM MTP Elite®	17795	13949	MAGENTA
20602	KIT, MTP®, UNIVERSAL, MALE, MM, 4.0 RND, ANGLED SPRING PUSH, MAGENTA	MM	17799	13949	MAGENTA
20603	KIT, MTP®, UNIVERSAL, MALE, MM MTP Elite®, 4.0 RND, ANGLED SPRING PUSH, MAGENTA	MM MTP Elite®	17800	13949	MAGENTA
20604	KIT, MTP®, UNIVERSAL, FEMALE, MM, 4.0 RND, ANGLED SPRING PUSH, HEATHER VIOLET	MM or MM MTP Elite®	17795	16693	HEATHER VIOLET
20605	KIT, MTP®, UNIVERSAL, MALE, MM, 4.0 RND, ANGLED SPRING PUSH, HEATHER VIOLET	MM	17799	16693	HEATHER VIOLET
20606	KIT, MTP®, UNIVERSAL, MALE, MM MTP Elite®, 4.0 RND, ANGLED SPRING PUSH, HEATHER VIOLET	MM MTP Elite®	17800	16693	HEATHER VIOLET
20607	KIT, MTP®, UNIVERSAL, FEMALE, MM, 4.0 RND, ANGLED SPRING PUSH, MUNSELL VIOLET	MM or MM MTP Elite®	17795	16791	MUNSELL VIOLET
20608	KIT, MTP®, UNIVERSAL, MALE, MM, 4.0 RND, ANGLED SPRING PUSH, MUNSELL VIOLET	MM	17799	16791	MUNSELL VIOLET
20609	KIT, MTP®, UNIVERSAL, MALE, MM MTP Elite®, 4.0 RND, ANGLED SPRING PUSH, MUNSELL VIOLET	MM MTP Elite®	17800	16791	MUNSELL VIOLET
20610	KIT, MTP®, UNIVERSAL, FEMALE, MM, 4.0 RND, ANGLED SPRING PUSH, LIME	MM or MM MTP Elite®	17795	18829	LIME
20611	KIT, MTP®, UNIVERSAL, MALE, MM, 4.0 RND, ANGLED SPRING PUSH, LIME	MM	17799	18829	LIME
20612	KIT, MTP®, UNIVERSAL, MALE, MM MTP Elite®, 4.0 RND, ANGLED SPRING PUSH, LIME	MM MTP Elite®	17800	18829	LIME
20613	KIT, MTP®, UNIVERSAL, FEMALE, SM, 4.0 RND, ANGLED SPRING PUSH, GREEN	SM	17795	16007	GREEN
20614	KIT, MTP®, UNIVERSAL, MALE, SM, 4.0 RND, ANGLED SPRING PUSH, GREEN	SM	17800	16007	GREEN
20615	KIT, MTP®, UNIVERSAL, FEMALE, SM MTP Elite®, 4.0 RND, ANGLED SPRING PUSH, YELLOW	SM MTP Elite®	17795	16918	YELLOW
20616	KIT, MTP®, UNIVERSAL, MALE, SM MTP Elite®, 4.0 RND, ANGLED SPRING PUSH, YELLOW	SM MTP Elite®	17801	16918	YELLOW

NOTES:

- 1. MALE CONNECTOR KIT HAS PIN CLAMP ASSEMBLY. FEMALE CONNECTOR KIT HAS FEMALE PIN SPACER.



FERRULE / BOOT KIT SHOWN FOR REFERENCE ONLY, MUST BE PURCHASED SEPARATELY

▲ DENOTES CRITICAL DIMENSION

USCONEC LTD. PROPRIETARY
THIS DOCUMENT AND THE ASSOCIATED DATA CONTAIN RESTRICTED INFORMATION THAT IS USCONEC LTD. PROPERTY. DISCLOSE OR DUPLICATE FOR OTHERS ONLY AS AUTHORIZED BY USCONEC LTD.

Material:

REV	DATE	DESCRIPTION	ECN
X1	5/18/20	---	2213-mm
A	5/20/20	INITIAL RELEASE	

CUSTOMER DRAWING

DIMENSIONS FOR REFERENCE ONLY

THIRD ANGLE PROJECTION

METRIC/mm

USCONEC

Hickory, NC
800-769-0944
www.usconec.com

TITLE
KIT, MTP® CONN., UNIV., 3.8 - 4.2mm
ROUND CBL, ANGLED SPRING PUSH

SIZE: S&M Part No.: DWG NO:
C20594

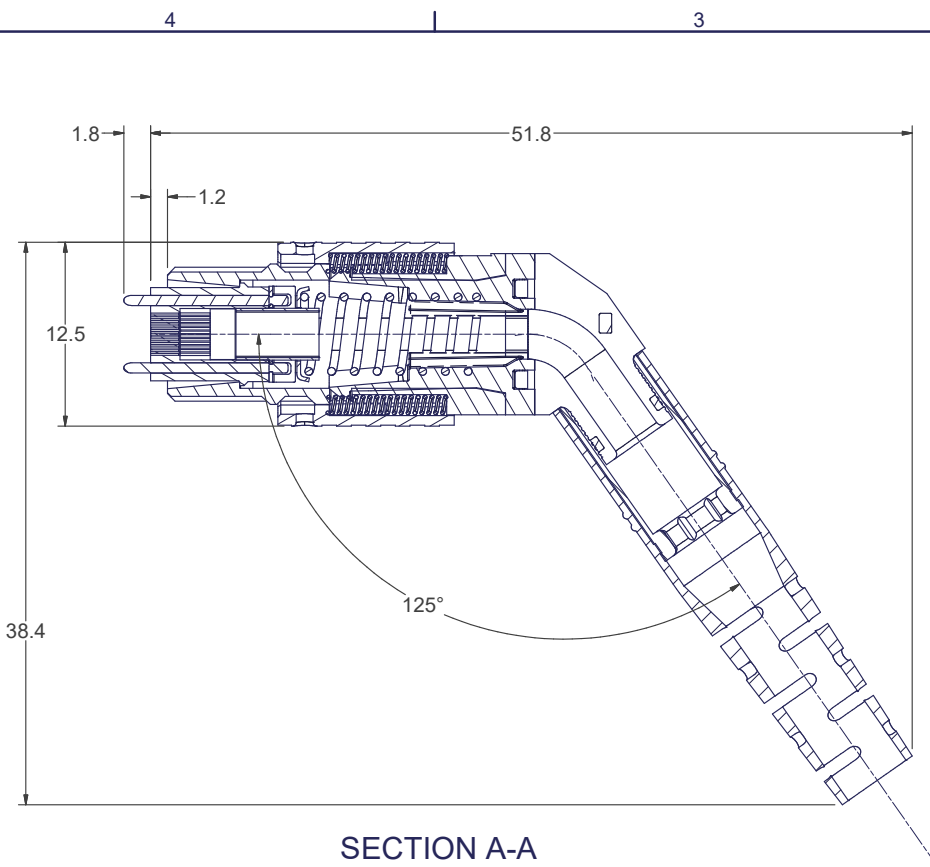
SCALE: N.T.S. Drafter: M.McCROSKEY Date: 5/18/2020 SHEET 1 OF 2

4

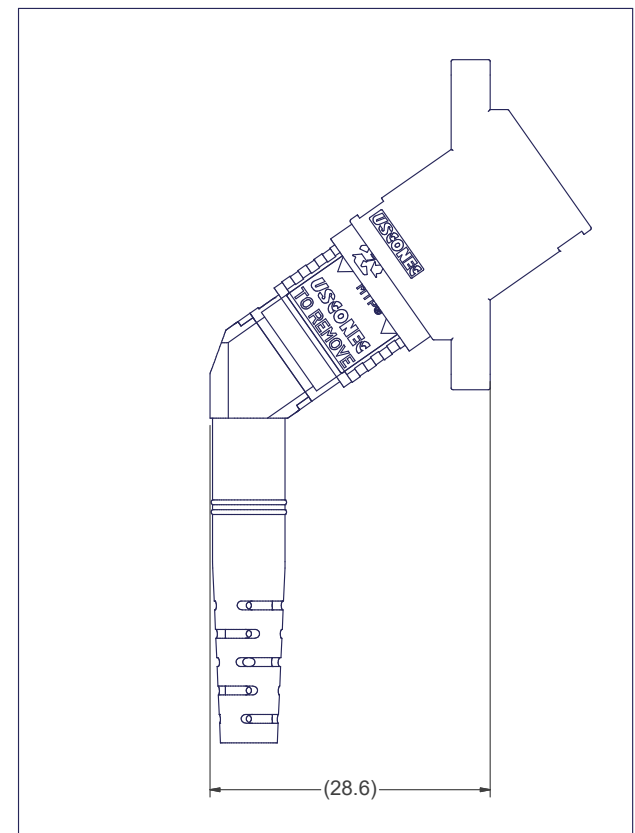
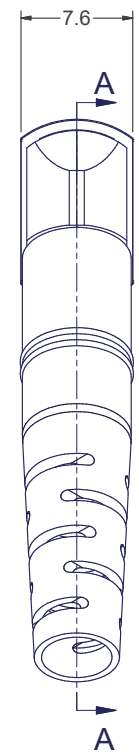
3

2

1



SECTION A-A



MTP® CONNECTOR SHOWN WITH ANGLED MTP® ADAPTER (ANGLED MTP® ADAPTER SOLD SEPARATELY)

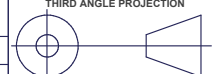
USCONEC LTD. PROPRIETARY
 THIS DOCUMENT AND THE ASSOCIATED DATA CONTAIN RESTRICTED INFORMATION THAT IS USCONEC LTD. PROPERTY. DISCLOSE OR DUPLICATE FOR OTHERS ONLY AS AUTHORIZED BY USCONEC LTD.

Material:

REV.	DATE	DESCRIPTION	ECN

CUSTOMER DRAWING

DIMENSIONS FOR REFERENCE ONLY



METRIC/mm

USCONEC
 Hickory, NC
 800-769-0944
 www.usconec.com

TITLE
 KIT, MTP® CONN., UNIV., 3.8 - 4.2mm
 ROUND CBL, ANGLED SPRING PUSH

SIZE B	S&M Part No.: SEE SHEET 1	DWG NO. C20594	REV A
SCALE N.T.S.	Drafter M.McCROSKEY	Date: 5/18/2020	SHEET 2 OF 2

▲ DENOTES CRITICAL DIMENSION