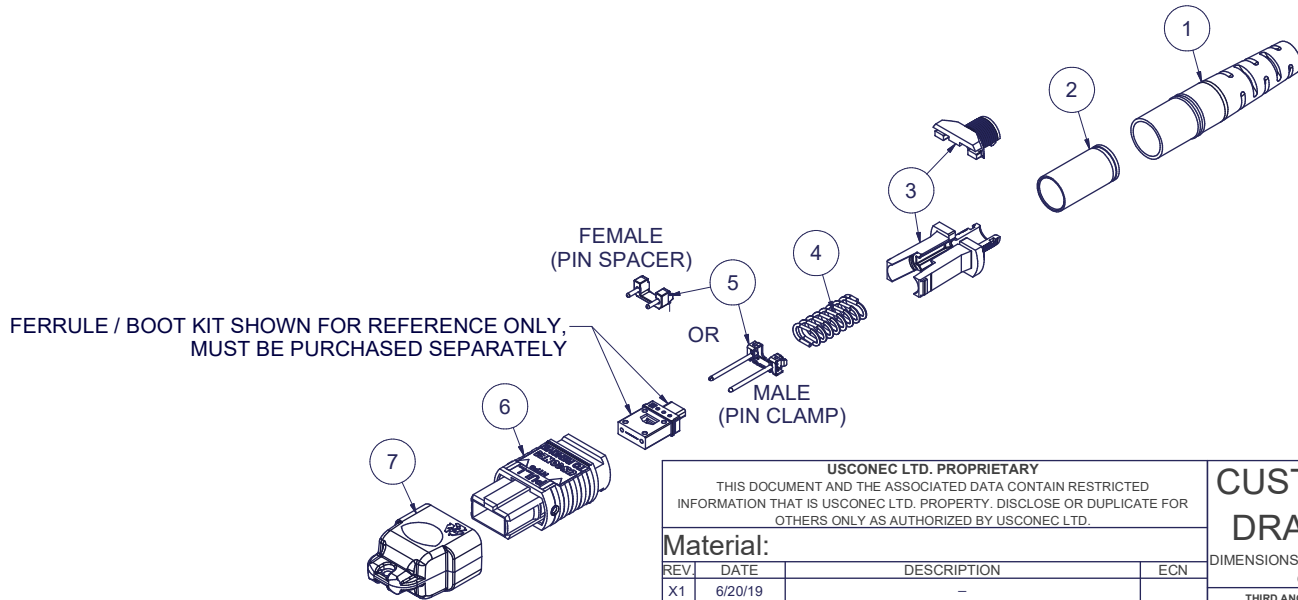


Parts List				
ITEM	DESCRIPTION	PART NUMBER	QTY	NOTES
1	BOOT, ROUND, 4.5 mm CABLE	13168	1	
2	CRIMP BAND, 4.0, ROUND, MTP® & MXC®	16543	1	
3	SPRING PUSH, UNIVERSAL, 2 PC, 4.0 - 5.5mm RND, MTP®	19740	1	
4	SPRING, UNIVERSAL, 9.8N, MTP®	17167	1	
5	PIN CLAMP or PIN SPACER	SEE KIT TABLE COLUMN A	1	NOTE 1
6	ASSEMBLY, HOUSING, MTP®	SEE KIT TABLE COLUMN B	1	
7	DUST CAP, MTP®	17242	1	

KIT P/N	KIT DESCRIPTION	PERFORMANCE	COLUMN A	COLUMN B	HSG ASSY COLOR
			PIN CLAMP/SPACER PN	HSG PN	
20548	KIT, MTP®, UNIV., FEMALE, MM, 4.0mm RND, BEIGE	MM	17795	MTP-A12-11	BEIGE
20549	KIT, MTP®, UNIV., MALE, MM, 4.0mm RND, BEIGE	MM	17799	MTP-A12-11	BEIGE
20550	KIT, MTP®, UNIV., FEMALE, MM, 4.0mm RND, BLACK	MM	17795	MTP-A12-02	BLACK
20551	KIT, MTP®, UNIV., MALE, MM, 4.0mm RND, BLACK	MM	17799	MTP-A12-02	BLACK
20552	KIT, MTP®, UNIV., FEMALE, MM, 4.0mm RND, AQUA	MM or MM MTP Elite®	17795	7871	AQUA
20553	KIT, MTP®, UNIV., MALE, MM, 4.0mm RND, AQUA	MM	17799	7871	AQUA
20554	KIT, MTP®, UNIV., MALE, MM MTP Elite®, 4.0mm RND, AQUA	MM MTP Elite®	17800	7871	AQUA
20555	KIT, MTP®, UNIV., FEMALE, MM, 4.0mm RND, MAGENTA	MM or MM MTP Elite®	17795	13949	MAGENTA
20556	KIT, MTP®, UNIV., MALE, MM, 4.0mm RND, MAGENTA	MM	17799	13949	MAGENTA
20557	KIT, MTP®, UNIV., MALE, MM MTP Elite®, 4.0mm RND, MAGENTA	MM MTP Elite®	17800	13949	MAGENTA
20558	KIT, MTP®, UNIV., FEMALE, MM, 4.0mm RND, HEATHER VIOLET	MM or MM MTP Elite®	17795	16693	HEATHER VIOLET
20559	KIT, MTP®, UNIV., MALE, MM, 4.0mm RND, HEATHER VIOLET	MM	17799	16693	HEATHER VIOLET
20560	KIT, MTP®, UNIV., MALE, MM MTP Elite®, 4.0mm RND, HEATHER VIOLET	MM MTP Elite®	17800	16693	HEATHER VIOLET
20561	KIT, MTP®, UNIV., FEMALE, MM, 4.0mm RND, MUNSELL VIOLET	MM or MM MTP Elite®	17795	16791	MUNSELL VIOLET
20562	KIT, MTP®, UNIV., MALE, MM, 4.0mm RND, MUNSELL VIOLET	MM	17799	16791	MUNSELL VIOLET
20563	KIT, MTP®, UNIV., MALE, MM MTP Elite®, 4.0mm RND, MUNSELL VIOLET	MM MTP Elite®	17800	16791	MUNSELL VIOLET
20564	KIT, MTP®, UNIV., FEMALE, MM, 4.0mm RND, LIME	MM or MM MTP Elite®	17795	18829	LIME
20565	KIT, MTP®, UNIV., MALE, MM, 4.0mm RND, LIME	MM	17799	18829	LIME
20566	KIT, MTP®, UNIV., MALE, MM MTP Elite®, 4.0mm RND, LIME	MM MTP Elite®	17800	18829	LIME
20567	KIT, MTP®, UNIV., FEMALE, SM, 4.0mm RND, GREEN	SM	17795	16007	GREEN
20568	KIT, MTP®, UNIV., MALE, SM, 4.0mm RND, GREEN	SM	17800	16007	GREEN
20569	KIT, MTP®, UNIV., FEMALE, SM MTP Elite®, 4.0mm RND, YELLOW	SM MTP Elite®	17795	16918	YELLOW
20570	KIT, MTP®, UNIV., MALE, SM MTP Elite®, 4.0mm RND, YELLOW	SM MTP Elite®	17801	16918	YELLOW

NOTES:

1. MALE CONNECTOR KIT HAS PIN CLAMP ASSEMBLY, FEMALE CONNECTOR KIT HAS FEMALE PIN SPACER



USCONEC LTD. PROPRIETARY
THIS DOCUMENT AND THE ASSOCIATED DATA CONTAIN RESTRICTED INFORMATION THAT IS USCONEC LTD. PROPERTY. DISCLOSE OR DUPLICATE FOR OTHERS ONLY AS AUTHORIZED BY USCONEC LTD.

Material:

REV	DATE	DESCRIPTION	ECN
X1	6/20/19	-	
A	1/14/20	INITIAL RELEASE	2225-mm
B	4/16/20	CORRECTED KIT DESCRIPTIONS	

CUSTOMER DRAWING

USCONEC Hickory, NC
800-769-0944
www.usconec.com

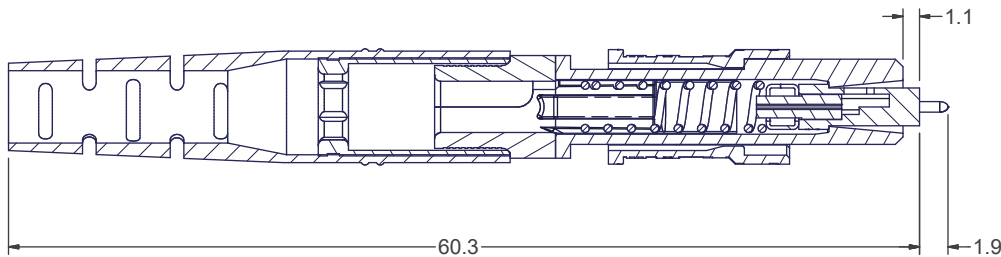
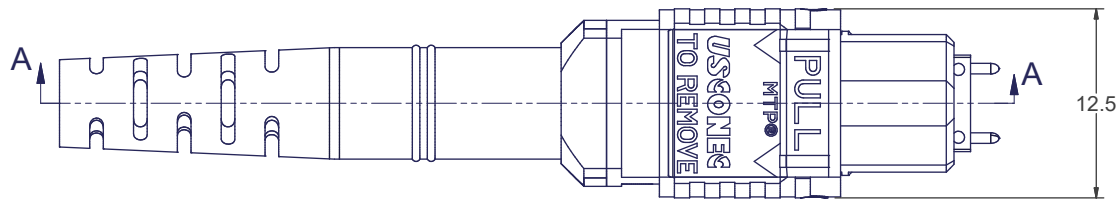
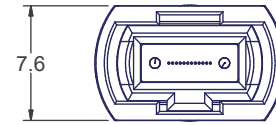
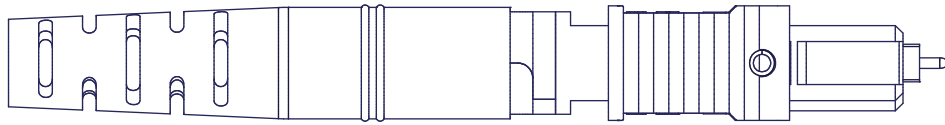
TITLE: KIT, MTP® CONNECTOR, UNIVERSAL, 3.8 - 4.2mm ROUND CABLE

SIZE: A3 S&M Part No.: SEE TABLE DWG NO: C20548 REV B

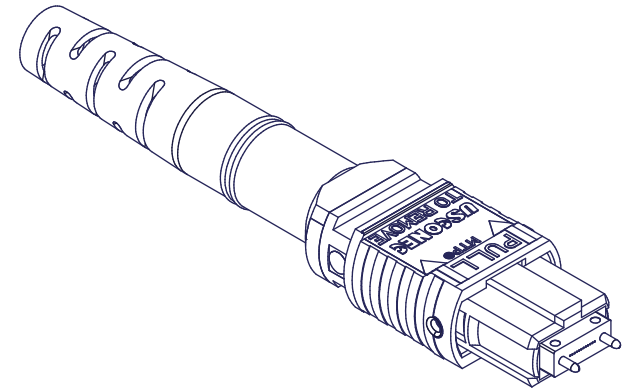
SCALE: N.T.S. Drafter: M. McCROSKEY Date: 6/20/2019 SHEET 1 OF 2

THIRD ANGLE PROJECTION

▲ DENOTES CRITICAL DIMENSION



SECTION A-A



▲ DENOTES CRITICAL DIMENSION

USCONEC LTD. PROPRIETARY
 THIS DOCUMENT AND THE ASSOCIATED DATA CONTAIN RESTRICTED INFORMATION THAT IS USCONEC LTD. PROPERTY. DISCLOSE OR DUPLICATE FOR OTHERS ONLY AS AUTHORIZED BY USCONEC LTD.

CUSTOMER DRAWING

Material:

REV	DATE	DESCRIPTION	ECN

DIMENSIONS FOR REFERENCE ONLY

THIRD ANGLE PROJECTION

METRIC/mm

USCONEC Hickory, NC
 800-769-0944
 www.usconec.com

TITLE
 KIT, MTP® CONNECTOR, UNIVERSAL,
 3.8 - 4.2mm ROUND CABLE

SIZE: **A3** S&M Part No.: SEE TABLE DWG NO: **C20548** REV: **B**

SCALE: N.T.S. Drafter: M.McCROSKEY Date: 6/20/2019 SHEET 2 OF 2

6 5 4 3 2 1

6 5 4 3 2 1

D
C
B
A

D
C
B
A

