

4

3

2

1

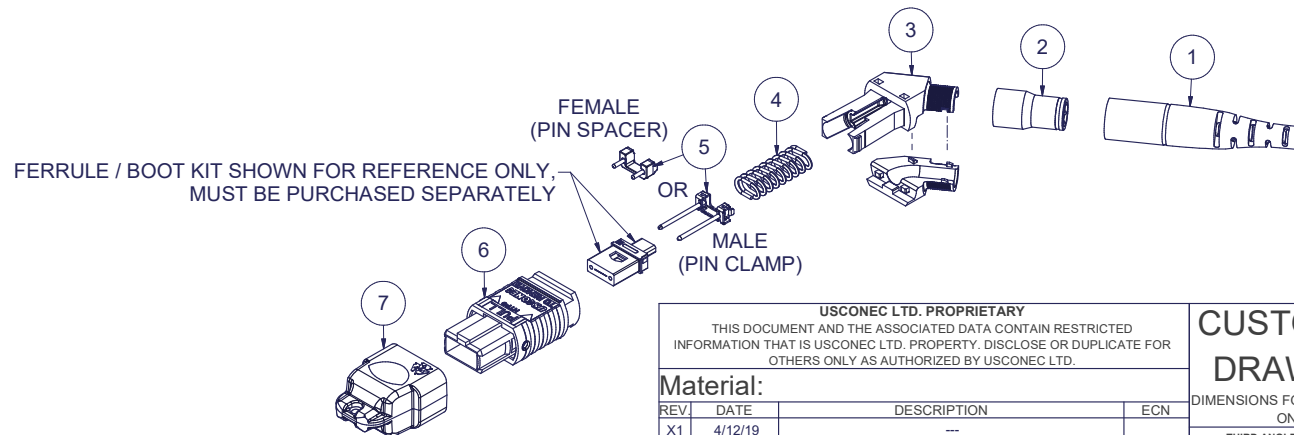
Parts List

ITEM	DESCRIPTION	PART NUMBER	QTY	NOTES
1	BOOT, 3.0 CABLE, with 3.6 OD	16377	1	
2	CRIMP BAND	18365	1	
3	SPRING PUSH, UNIVERSAL, 2 PC, ANGLED	19973	1	
4	SPRING, UNIVERSAL, 20N	17698	1	
5	PIN CLAMP or PIN SPACER	SEE KIT TABLE COLUMN A	1	NOTE 1
6	ASSEMBLY, HOUSING, MTP®	SEE KIT TABLE COLUMN B	1	
7	DUST CAP, MTP®	17242	1	

NOTES:

- MALE CONNECTOR KIT HAS PIN CLAMP ASSEMBLY. FEMALE CONNECTOR KIT HAS FEMALE PIN SPACER.

KIT P/N	KIT DESCRIPTION	PERFORMANCE	COLUMN A PIN CLAMP/ SPACER P/N	COLUMN B HSG ASSY P/N	HSG ASSY COLOR
20321	KIT, MTP®, UNIVERSAL, FEMALE, MM, 3.0 RND, ANGLED SPRING PUSH, HSF, BEIGE	MM	17795	MTP-A12-11	BEIGE
20322	KIT, MTP®, UNIVERSAL, MALE, MM, 3.0 RND, ANGLED SPRING PUSH, HSF, BEIGE	MM	17799	MTP-A12-11	BEIGE
20323	KIT, MTP®, UNIVERSAL, FEMALE, MM, 3.0 RND, ANGLED SPRING PUSH, HSF, BLACK	MM	17795	MTP-A12-02	BLACK
20324	KIT, MTP®, UNIVERSAL, MALE, MM, 3.0 RND, ANGLED SPRING PUSH, HSF, BLACK	MM	17799	MTP-A12-02	BLACK
20325	KIT, MTP®, UNIVERSAL, FEMALE, MM, 3.0 RND, ANGLED SPRING PUSH, HSF, AQUA	MM or MM MTP Elite®	17795	7871	AQUA
20326	KIT, MTP®, UNIVERSAL, MALE, MM, 3.0 RND, ANGLED SPRING PUSH, HSF, AQUA	MM	17799	7871	AQUA
20327	KIT, MTP®, UNIVERSAL, MALE, MM MTP Elite®, 3.0 RND, ANGLED SPRING PUSH, HSF, AQUA	MM MTP Elite®	17800	7871	AQUA
20328	KIT, MTP®, UNIVERSAL, FEMALE, MM, 3.0 RND, ANGLED SPRING PUSH, HSF, MAGENTA	MM or MM MTP Elite®	17795	13949	MAGENTA
20329	KIT, MTP®, UNIVERSAL, MALE, MM, 3.0 RND, ANGLED SPRING PUSH, HSF, MAGENTA	MM	17799	13949	MAGENTA
20330	KIT, MTP®, UNIVERSAL, MALE, MM MTP Elite®, 3.0 RND, ANGLED SPRING PUSH, HSF, MAGENTA	MM MTP Elite®	17800	13949	MAGENTA
20331	KIT, MTP®, UNIVERSAL, FEMALE, MM, 3.0 RND, ANGLED SPRING PUSH, HSF, HEATHER VIOLET	MM or MM MTP Elite®	17795	16693	HEATHER VIOLET
20332	KIT, MTP®, UNIVERSAL, MALE, MM, 3.0 RND, ANGLED SPRING PUSH, HSF, HEATHER VIOLET	MM	17799	16693	HEATHER VIOLET
20333	KIT, MTP®, UNIVERSAL, MALE, MM MTP Elite®, 3.0 RND, ANGLED SPRING PUSH, HSF, HEATHER VIOLET	MM MTP Elite®	17800	16693	HEATHER VIOLET
20334	KIT, MTP®, UNIVERSAL, FEMALE, MM, 3.0 RND, ANGLED SPRING PUSH, HSF, MUNSELL VIOLET	MM or MM MTP Elite®	17795	16791	MUNSELL VIOLET
20335	KIT, MTP®, UNIVERSAL, MALE, MM, 3.0 RND, ANGLED SPRING PUSH, HSF, MUNSELL VIOLET	MM	17799	16791	MUNSELL VIOLET
20336	KIT, MTP®, UNIVERSAL, MALE, MM MTP Elite®, 3.0 RND, ANGLED SPRING PUSH, HSF, MUNSELL VIOLET	MM MTP Elite®	17800	16791	MUNSELL VIOLET
20337	KIT, MTP®, UNIVERSAL, FEMALE, MM, 3.0 RND, ANGLED SPRING PUSH, HSF, LIME	MM or MM MTP Elite®	17795	18829	LIME
20338	KIT, MTP®, UNIVERSAL, MALE, MM, 3.0 RND, ANGLED SPRING PUSH, HSF, LIME	MM	17799	18829	LIME
20339	KIT, MTP®, UNIVERSAL, MALE, MM MTP Elite®, 3.0 RND, ANGLED SPRING PUSH, HSF, LIME	MM MTP Elite®	17800	18829	LIME
20340	KIT, MTP®, UNIVERSAL, FEMALE, SM, 3.0 RND, ANGLED SPRING PUSH, HSF, GREEN	SM	17795	16007	GREEN
20341	KIT, MTP®, UNIVERSAL, MALE, SM, 3.0 RND, ANGLED SPRING PUSH, HSF, GREEN	SM	17800	16007	GREEN
20342	KIT, MTP®, UNIVERSAL, FEMALE, SM MTP Elite®, 3.0 RND, ANGLED SPRING PUSH, HSF, YELLOW	SM MTP Elite®	17795	16918	YELLOW
20343	KIT, MTP®, UNIVERSAL, MALE, SM MTP Elite®, 3.0 RND, ANGLED SPRING PUSH, HSF, YELLOW	SM MTP Elite®	17801	16918	YELLOW



▲ DENOTES CRITICAL DIMENSION

USCONEC LTD. PROPRIETARY
THIS DOCUMENT AND THE ASSOCIATED DATA CONTAIN RESTRICTED INFORMATION THAT IS USCONEC LTD. PROPERTY. DISCLOSE OR DUPLICATE FOR OTHERS ONLY AS AUTHORIZED BY USCONEC LTD.

Material:

REV	DATE	DESCRIPTION	ECN
X1	4/12/19	---	2213-mm
A	5/20/20	INITIAL RELEASE	

CUSTOMER DRAWING

DIMENSIONS FOR REFERENCE ONLY

THIRD ANGLE PROJECTION

METRIC/mm

USCONEC Hickory, NC
800-769-0944
www.usconec.com

TITLE
KIT, MTP® CONN., UNIV., 2.8 - 3.2mm RND CBL, ANGLED SPRING PUSH, HIGH SPRING FORCE

SIZE: S&M Part No.: DWG NO: **C20321** REV: A

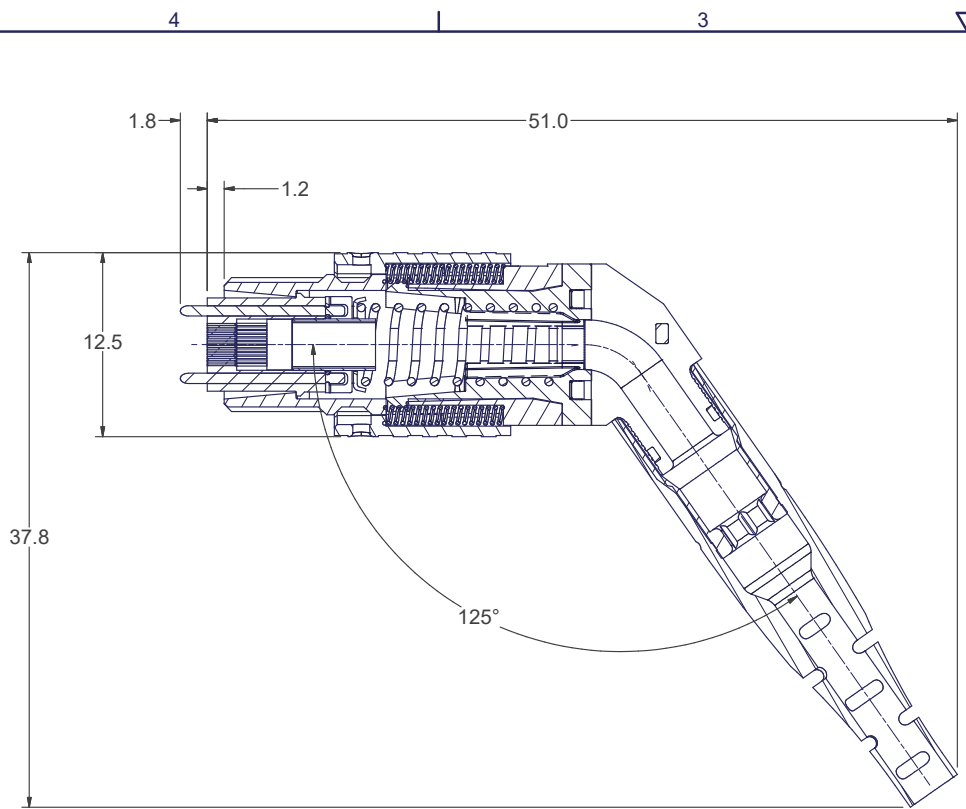
SCALE: N.T.S. Drafter: M.McCROSKEY Date: 4/12/2019 SHEET 1 OF 2

4

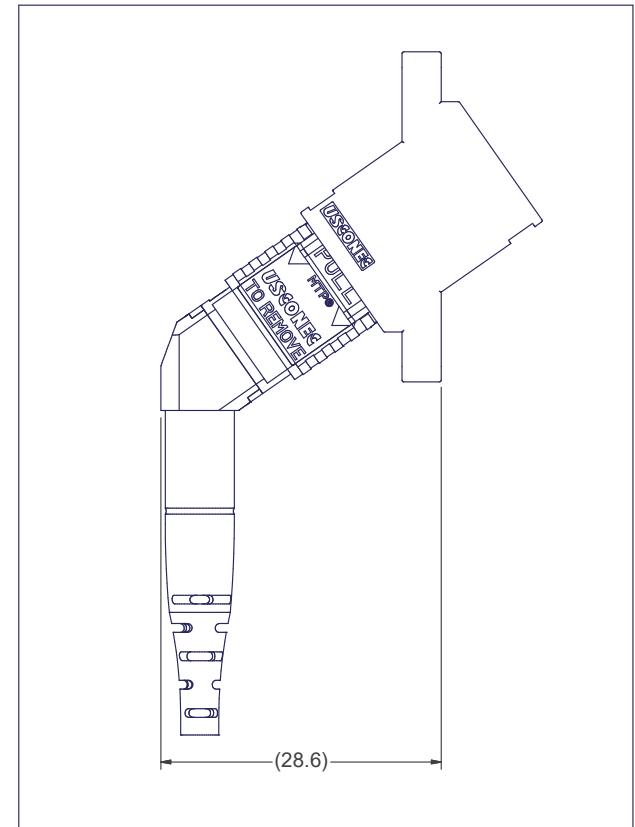
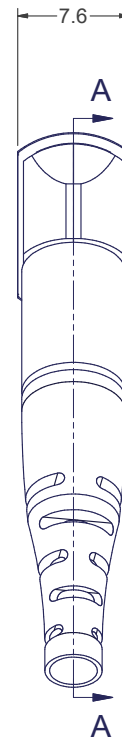
3

2

1



SECTION A-A



MTP® CONNECTOR SHOWN WITH ANGLED MTP® ADAPTER (ANGLED MTP® ADAPTER SOLD SEPARATELY)

▲ DENOTES CRITICAL DIMENSION

USCONEC LTD. PROPRIETARY
 THIS DOCUMENT AND THE ASSOCIATED DATA CONTAIN RESTRICTED INFORMATION THAT IS USCONEC LTD. PROPERTY. DISCLOSE OR DUPLICATE FOR OTHERS ONLY AS AUTHORIZED BY USCONEC LTD.

Material:

REV.	DATE	DESCRIPTION	ECN

CUSTOMER DRAWING

DIMENSIONS FOR REFERENCE ONLY

THIRD ANGLE PROJECTION



METRIC/mm



Hickory, NC
 800-769-0944
 www.usconec.com

TITLE
 KIT, MTP® CONN., UNIV., 2.8 - 3.2mm RND CBL, ANGLED SPRING PUSH, HIGH SPRING FORCE

SIZE	S&M Part No.:	DWG NO.	REV
B	SEE SHEET 1	C20321	A

SCALE	Drafter	Date:	SHEET	OF 2
N.T.S.	M.McCROSKY	4/12/2019	2	2