

4

3

2

1

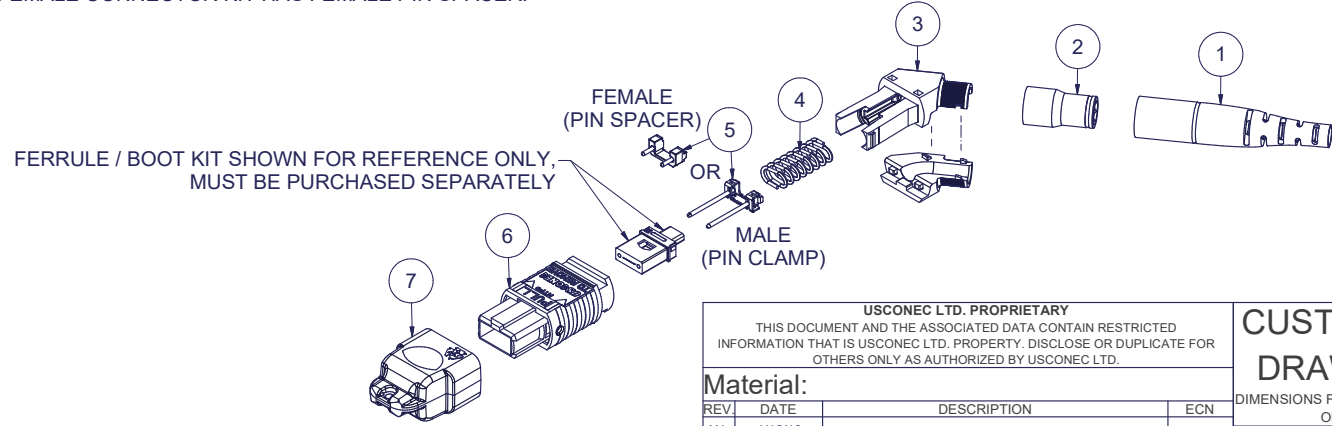
Parts List

ITEM	DESCRIPTION	PART NUMBER	QTY	NOTES
1	BOOT, 3.0 CABLE, with 3.6 OD	16377	1	
2	CRIMP BAND	18365	1	
3	SPRING PUSH, UNIVERSAL, 2 PC, ANGLED	19973	1	
4	SPRING, UNIVERSAL, 9.8N, MTP®	17167	1	
5	PIN CLAMP or PIN SPACER	SEE KIT TABLE COLUMN A	1	NOTE 1
6	ASSEMBLY, HOUSING, MTP®	SEE KIT TABLE COLUMN B	1	
7	DUST CAP, MTP®	17242	1	

KIT P/N	KIT DESCRIPTION	PERFORMANCE	COLUMN A	COLUMN B	HSG ASSY COLOR
			PIN CLAMP/ SPACER P/N	HSG ASSY P/N	
20298	KIT, MTP®, UNIVERSAL, FEMALE, MM, 3.0 RND, ANGLED SPRING PUSH, BEIGE	MM	17795	MTP-A12-11	BEIGE
20299	KIT, MTP®, UNIVERSAL, MALE, MM, 3.0 RND, ANGLED SPRING PUSH, BEIGE	MM	17799	MTP-A12-11	BEIGE
20300	KIT, MTP®, UNIVERSAL, FEMALE, MM, 3.0 RND, ANGLED SPRING PUSH, BLACK	MM	17795	MTP-A12-02	BLACK
20301	KIT, MTP®, UNIVERSAL, MALE, MM, 3.0 RND, ANGLED SPRING PUSH, BLACK	MM	17799	MTP-A12-02	BLACK
20302	KIT, MTP®, UNIVERSAL, FEMALE, MM, 3.0 RND, ANGLED SPRING PUSH, AQUA	MM or MM MTP Elite®	17795	7871	AQUA
20303	KIT, MTP®, UNIVERSAL, MALE, MM, 3.0 RND, ANGLED SPRING PUSH, AQUA	MM	17799	7871	AQUA
20304	KIT, MTP®, UNIVERSAL, MALE, MM MTP Elite®, 3.0 RND, ANGLED SPRING PUSH, AQUA	MM MTP Elite®	17800	7871	AQUA
20305	KIT, MTP®, UNIVERSAL, FEMALE, MM, 3.0 RND, ANGLED SPRING PUSH, MAGENTA	MM or MM MTP Elite®	17795	13949	MAGENTA
20306	KIT, MTP®, UNIVERSAL, MALE, MM, 3.0 RND, ANGLED SPRING PUSH, MAGENTA	MM	17799	13949	MAGENTA
20307	KIT, MTP®, UNIVERSAL, MALE, MM MTP Elite®, 3.0 RND, ANGLED SPRING PUSH, MAGENTA	MM MTP Elite®	17800	13949	MAGENTA
20308	KIT, MTP®, UNIVERSAL, FEMALE, MM, 3.0 RND, ANGLED SPRING PUSH, HEATHER VIOLET	MM or MM MTP Elite®	17795	16693	HEATHER VIOLET
20309	KIT, MTP®, UNIVERSAL, MALE, MM, 3.0 RND, ANGLED SPRING PUSH, HEATHER VIOLET	MM	17799	16693	HEATHER VIOLET
20310	KIT, MTP®, UNIVERSAL, MALE, MM MTP Elite®, 3.0 RND, ANGLED SPRING PUSH, HEATHER VIOLET	MM MTP Elite®	17800	16693	HEATHER VIOLET
20311	KIT, MTP®, UNIVERSAL, FEMALE, MM, 3.0 RND, ANGLED SPRING PUSH, MUNSELL VIOLET	MM or MM MTP Elite®	17795	16791	MUNSELL VIOLET
20312	KIT, MTP®, UNIVERSAL, MALE, MM, 3.0 RND, ANGLED SPRING PUSH, MUNSELL VIOLET	MM	17799	16791	MUNSELL VIOLET
20313	KIT, MTP®, UNIVERSAL, MALE, MM MTP Elite®, 3.0 RND, ANGLED SPRING PUSH, MUNSELL VIOLET	MM MTP Elite®	17800	16791	MUNSELL VIOLET
20314	KIT, MTP®, UNIVERSAL, FEMALE, MM, 3.0 RND, ANGLED SPRING PUSH, LIME	MM or MM MTP Elite®	17795	18829	LIME
20315	KIT, MTP®, UNIVERSAL, MALE, MM, 3.0 RND, ANGLED SPRING PUSH, LIME	MM	17799	18829	LIME
20316	KIT, MTP®, UNIVERSAL, MALE, MM MTP Elite®, 3.0 RND, ANGLED SPRING PUSH, LIME	MM MTP Elite®	17800	18829	LIME
20317	KIT, MTP®, UNIVERSAL, FEMALE, SM, 3.0 RND, ANGLED SPRING PUSH, GREEN	SM	17795	16007	GREEN
20318	KIT, MTP®, UNIVERSAL, MALE, SM, 3.0 RND, ANGLED SPRING PUSH, GREEN	SM	17800	16007	GREEN
20319	KIT, MTP®, UNIVERSAL, FEMALE, SM MTP Elite®, 3.0 RND, ANGLED SPRING PUSH, YELLOW	SM MTP Elite®	17795	16918	YELLOW
20320	KIT, MTP®, UNIVERSAL, MALE, SM MTP Elite®, 3.0 RND, ANGLED SPRING PUSH, YELLOW	SM MTP Elite®	17801	16918	YELLOW

NOTES:

- MALE CONNECTOR KIT HAS PIN CLAMP ASSEMBLY. FEMALE CONNECTOR KIT HAS FEMALE PIN SPACER.



▲ DENOTES CRITICAL DIMENSION

USCONEC LTD. PROPRIETARY  
 THIS DOCUMENT AND THE ASSOCIATED DATA CONTAIN RESTRICTED INFORMATION THAT IS USCONEC LTD. PROPERTY. DISCLOSE OR DUPLICATE FOR OTHERS ONLY AS AUTHORIZED BY USCONEC LTD.

REV	DATE	DESCRIPTION	ECN
X1	4/12/19	---	2213-mm
A	5/20/20	INITIAL RELEASE	

CUSTOMER DRAWING

DIMENSIONS FOR REFERENCE ONLY



METRIC/mm

**USCONEC**  
 Hickory, NC  
 800-769-0944  
 www.usconec.com

TITLE  
 KIT, MTP® CONN., UNIV., 2.8 - 3.2mm  
 ROUND CBL, ANGLED SPRING PUSH

SIZE: B  
 S&M Part No.: SEE TABLE  
 DWG No: C20298  
 REV: A

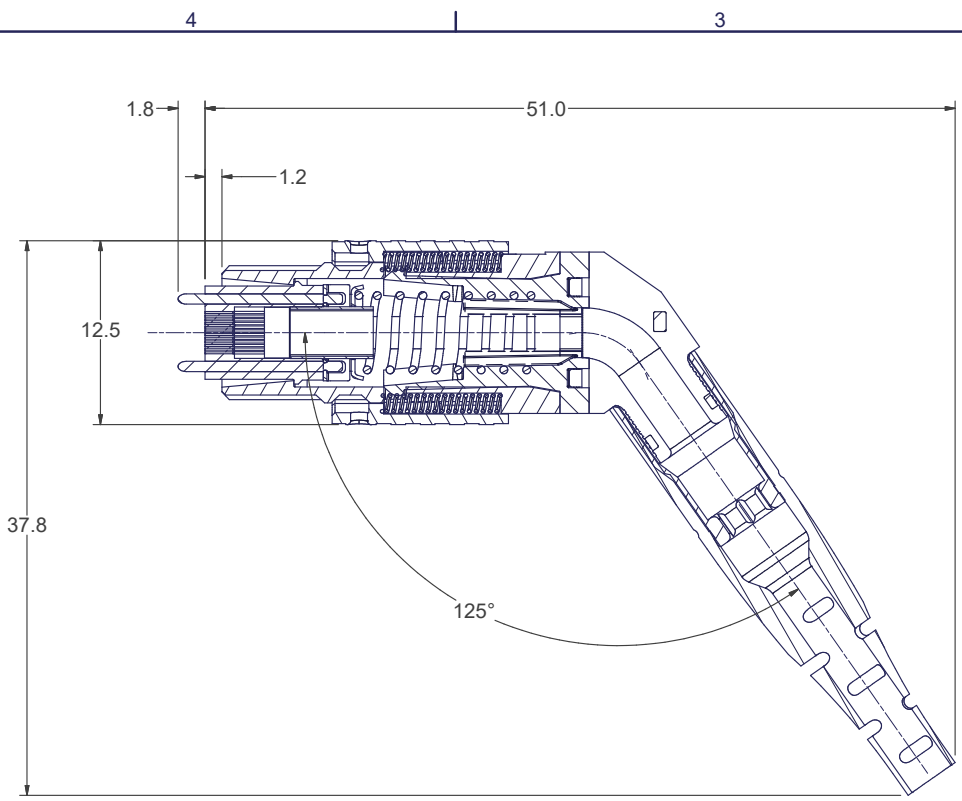
SCALE: N.T.S.  
 Drafter: M.McCROSKEY  
 Date: 4/12/2019  
 SHEET 1 OF 2

4

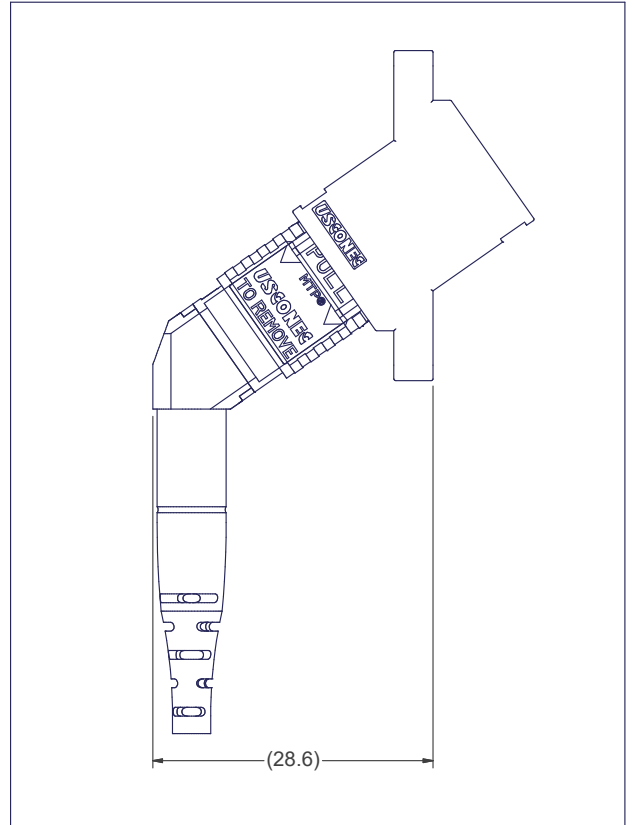
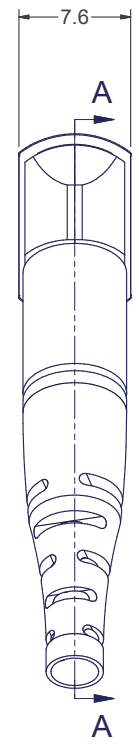
3

2

1



SECTION A-A



MTP® CONNECTOR SHOWN WITH ANGLED MTP® ADAPTER (ANGLED MTP® ADAPTER SOLD SEPARATELY)

**USCONEC LTD. PROPRIETARY**  
THIS DOCUMENT AND THE ASSOCIATED DATA CONTAIN RESTRICTED INFORMATION THAT IS USCONEC LTD. PROPERTY. DISCLOSE OR DUPLICATE FOR OTHERS ONLY AS AUTHORIZED BY USCONEC LTD.

**Material:**

REV.	DATE	DESCRIPTION	ECN

**CUSTOMER DRAWING**

DIMENSIONS FOR REFERENCE ONLY

THIRD ANGLE PROJECTION

**METRIC/mm**

▲ DENOTES CRITICAL DIMENSION

**USCONEC** Hickory, NC  
800-769-0944  
www.usconec.com

TITLE  
**KIT, MTP® CONN., UNIV., 2.8 - 3.2mm ROUND CBL, ANGLED SPRING PUSH**

SIZE	S&M Part No.:	DWG NO.	REV
<b>B</b>	SEE SHEET 1	<b>C20298</b>	<b>A</b>
SCALE	Drafter	Date:	SHEET
N.T.S.	M.McCROSKEY	4/12/2019	2 OF 2