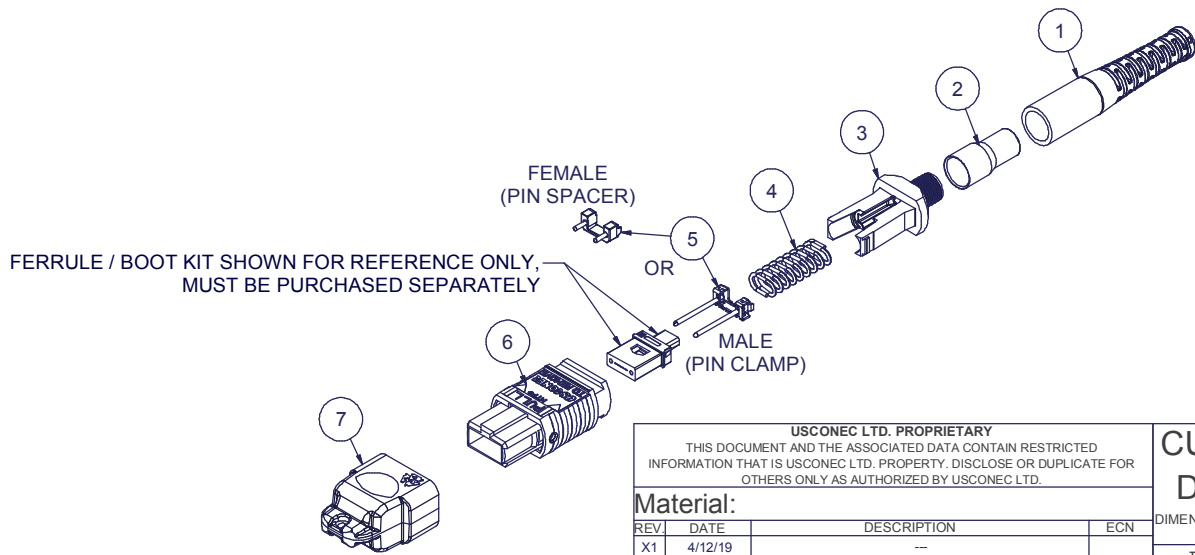


Parts List				
ITEM	DESCRIPTION	PART NUMBER	QTY	NOTES
1	BOOT, 3.0mm ROUND, MTP® FLEX	15960	1	
2	CRIMP BAND, 3.0 ROUND, MTP®	15633	1	
3	SPRING PUSH, UNIV., 3.0mm RND	19692	1	
4	SPRING, UNIVERSAL, 20N	17698	1	
5	PIN CLAMP or PIN SPACER	SEE KIT TABLE COLUMN A	1	NOTE 1
6	ASSEMBLY, HOUSING, MTP®	SEE KIT TABLE COLUMN B	1	
7	DUST CAP, MTP®	17242	1	

NOTES:

1. MALE CONNECTOR KIT HAS PIN CLAMP ASSEMBLY. FEMALE CONNECTOR KIT HAS FEMALE PIN SPACER.

KIT P/N	KIT DESCRIPTION	PERFORMANCE	COLUMN A PIN CLAMP/ SPACER P/N	COLUMN B HSG ASSY P/N	HSG ASSY COLOR
20275	KIT, MTP®, UNIVERSAL, FEMALE, MM, 3.0 RND, FLEX BOOT, HSF, BEIGE	MM	17795	MTP-A12-11	BEIGE
20276	KIT, MTP®, UNIVERSAL, MALE, MM, 3.0 RND, FLEX BOOT, HSF, BEIGE	MM	17799	MTP-A12-11	BEIGE
20277	KIT, MTP®, UNIVERSAL, FEMALE, MM, 3.0 RND, FLEX BOOT, HSF, BLACK	MM	17795	MTP-A12-02	BLACK
20278	KIT, MTP®, UNIVERSAL, MALE, MM, 3.0 RND, FLEX BOOT, HSF, BLACK	MM	17799	MTP-A12-02	BLACK
20279	KIT, MTP®, UNIVERSAL, FEMALE, MM, 3.0 RND, FLEX BOOT, HSF, AQUA	MM or MM MTP Elite®	17795	7871	AQUA
20280	KIT, MTP®, UNIVERSAL, MALE, MM, 3.0 RND, FLEX BOOT, HSF, AQUA	MM	17799	7871	AQUA
20281	KIT, MTP®, UNIVERSAL, MALE, MM MTP Elite®, 3.0 RND, FLEX BOOT, HSF, AQUA	MM MTP Elite®	17800	7871	AQUA
20282	KIT, MTP®, UNIVERSAL, FEMALE, MM, 3.0 RND, FLEX BOOT, HSF, MAGENTA	MM or MM MTP Elite®	17795	13949	MAGENTA
20283	KIT, MTP®, UNIVERSAL, MALE, MM, 3.0 RND, FLEX BOOT, HSF, MAGENTA	MM	17799	13949	MAGENTA
20284	KIT, MTP®, UNIVERSAL, MALE, MM MTP Elite®, 3.0 RND, FLEX BOOT, HSF, MAGENTA	MM MTP Elite®	17800	13949	MAGENTA
20285	KIT, MTP®, UNIVERSAL, FEMALE, MM, 3.0 RND, FLEX BOOT, HSF, HEATHER VIOLET	MM or MM MTP Elite®	17795	16693	HEATHER VIOLET
20286	KIT, MTP®, UNIVERSAL, MALE, MM, 3.0 RND, FLEX BOOT, HSF, HEATHER VIOLET	MM	17799	16693	HEATHER VIOLET
20287	KIT, MTP®, UNIVERSAL, FEMALE, MM, MM MTP Elite®, 3.0 RND, FLEX BOOT, HSF, HEATHER VIOLET	MM MTP Elite®	17800	16693	HEATHER VIOLET
20288	KIT, MTP®, UNIVERSAL, FEMALE, MM, 3.0 RND, FLEX BOOT, HSF, MUNSELL VIOLET	MM or MM MTP Elite®	17795	16791	MUNSELL VIOLET
20289	KIT, MTP®, UNIVERSAL, MALE, MM, 3.0 RND, FLEX BOOT, HSF, MUNSELL VIOLET	MM	17799	16791	MUNSELL VIOLET
20290	KIT, MTP®, UNIVERSAL, MALE, MM MTP Elite®, 3.0 RND, FLEX BOOT, HSF, MUNSELL VIOLET	MM MTP Elite®	17800	16791	MUNSELL VIOLET
20291	KIT, MTP®, UNIVERSAL, FEMALE, MM, 3.0 RND, FLEX BOOT, HSF, LIME	MM or MM MTP Elite®	17795	18829	LIME
20292	KIT, MTP®, UNIVERSAL, MALE, MM, 3.0 RND, FLEX BOOT, HSF, LIME	MM	17799	18829	LIME
20293	KIT, MTP®, UNIVERSAL, MALE, MM MTP Elite®, 3.0 RND, FLEX BOOT, HSF, LIME	MM MTP Elite®	17800	18829	LIME
20294	KIT, MTP®, UNIVERSAL, FEMALE, SM, 3.0 RND, FLEX BOOT, HSF, GREEN	SM	17795	16007	GREEN
20295	KIT, MTP®, UNIVERSAL, MALE, SM, 3.0 RND, FLEX BOOT, HSF, GREEN	SM	17800	16007	GREEN
20296	KIT, MTP®, UNIVERSAL, FEMALE, SM MTP Elite®, 3.0 RND, FLEX BOOT, HSF, YELLOW	SM MTP Elite®	17795	16918	YELLOW
20297	KIT, MTP®, UNIVERSAL, MALE, SM MTP Elite®, 3.0 RND, FLEX BOOT, HSF, YELLOW	SM MTP Elite®	17801	16918	YELLOW



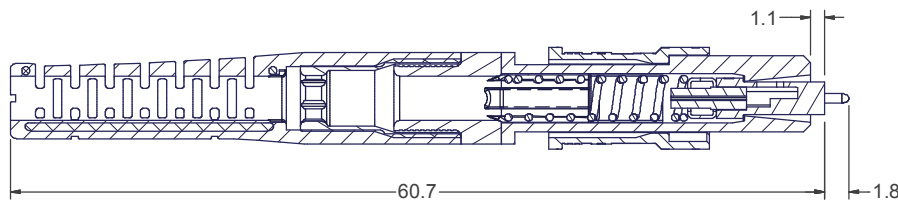
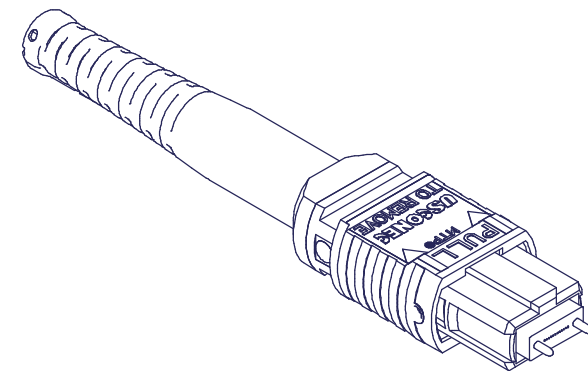
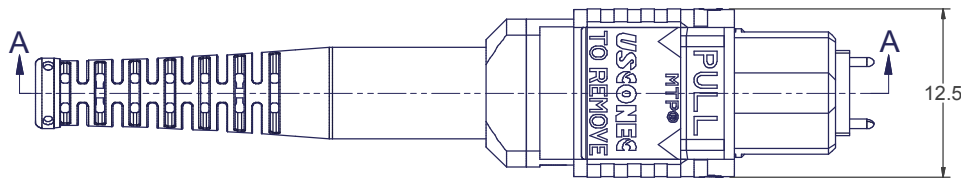
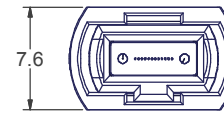
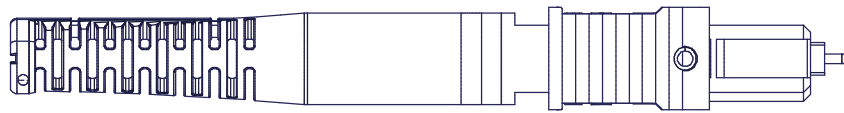
USCONEC LTD. PROPRIETARY
THIS DOCUMENT AND THE ASSOCIATED DATA CONTAIN RESTRICTED INFORMATION THAT IS USCONEC LTD. PROPERTY. DISCLOSE OR DUPLICATE FOR OTHERS ONLY AS AUTHORIZED BY USCONEC LTD.

Material:

REV.	DATE	DESCRIPTION	ECN
X1	4/12/19	---	
A	6/27/19	REMOVED ASSY WITH ADAPTER	2211-mm
		INITIAL RELEASE	

▲ DENOTES CRITICAL DIMENSION

CUSTOMER DRAWING	USCONEC		Hickory, NC 800-769-0944 www.usconec.com
	TITLE KIT, MTP® CONN., UNIV., 2.8 - 3.2mm RND CBL, MTP® FLEX BOOT, HSF		
DIMENSIONS FOR REFERENCE ONLY		DWG NO. C20275	
THIRD ANGLE PROJECTION		SCALE A3	REV A
METRIC/mm		S&M Part No.: SEE TABLE	Date: 4/12/2019
		Drafter: M. McCROSKEY	SHEET 1 OF 2



SECTION A-A

▲ DENOTES CRITICAL DIMENSION

USCONEC LTD. PROPRIETARY
THIS DOCUMENT AND THE ASSOCIATED DATA CONTAIN RESTRICTED INFORMATION THAT IS USCONEC LTD. PROPERTY. DISCLOSE OR DUPLICATE FOR OTHERS ONLY AS AUTHORIZED BY USCONEC LTD.

Material:

REV.	DATE	DESCRIPTION	ECN

CUSTOMER DRAWING



Hickory, NC
800-769-0944
www.usconec.com

DIMENSIONS FOR REFERENCE ONLY

TITLE
KIT, MTP® CONN., UNIV., 2.8 - 3.2mm
RND CBL, MTP® FLEX BOOT, HSF

THIRD ANGLE PROJECTION



SIZE | S&M Part No.: | DWG NO.
A3 | SEE SHEET 1 | **C20275**

METRIC/mm

SCALE | N.T.S. | Drafter | M.McCROSKEY | Date: | 4/12/2019 | SHEET | 2 | OF 2