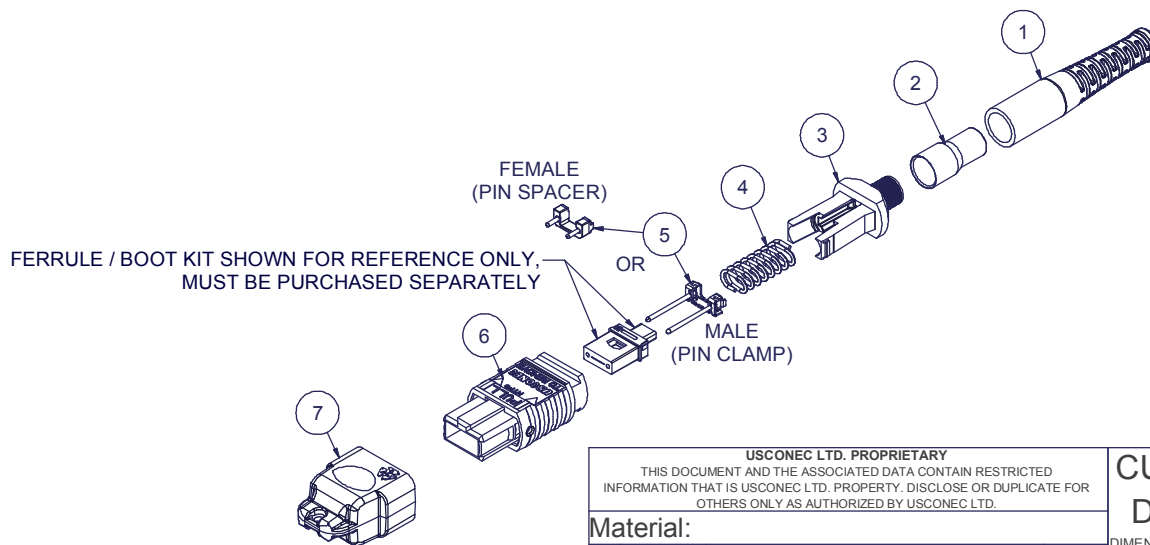


Parts List										
ITEM	DESCRIPTION	PART NUMBER	QTY	NOTES	KIT P/N	KIT DESCRIPTION	PERFORMANCE	COLUMN A PIN CLAMP/SPACER P/N	COLUMN B HSG ASSY P/N	HSG ASSY COLOR
1	BOOT, 3.0mm ROUND, MTP® FLEX	15960	1		20251	KIT, MTP®, UNIVERSAL, FEMALE, MM, 3.0 RND, FLEX BOOT, BEIGE	MM	17795	MTP-A12-11	BEIGE
					20252	KIT, MTP®, UNIVERSAL, MALE, MM, 3.0 RND, FLEX BOOT, BEIGE	MM	17799	MTP-A12-11	BEIGE
2	CRIMP BAND, 3.0 ROUND, MTP®	15633	1		20253	KIT, MTP®, UNIVERSAL, FEMALE, MM, 3.0 RND, FLEX BOOT, BLACK	MM	17795	MTP-A12-02	BLACK
					20254	KIT, MTP®, UNIVERSAL, MALE, MM, 3.0 RND, FLEX BOOT, BLACK	MM	17799	MTP-A12-02	BLACK
3	SPRING PUSH, UNIV., 3.0mm RND	19692	1		20255	KIT, MTP®, UNIVERSAL, FEMALE, MM, 3.0 RND, FLEX BOOT, AQUA	MM or MM MTP Elite®	17795	7871	AQUA
					20256	KIT, MTP®, UNIVERSAL, MALE, MM, 3.0 RND, FLEX BOOT, AQUA	MM	17799	7871	AQUA
4	SPRING, UNIVERSAL, 9.8N, MTP®	17167	1		20257	KIT, MTP®, UNIVERSAL, MALE, MM MTP Elite®, 3.0 RND, FLEX BOOT, AQUA	MM MTP Elite®	17800	7871	AQUA
					20258	KIT, MTP®, UNIVERSAL, FEMALE, MM, 3.0 RND, FLEX BOOT, MAGENTA	MM or MM MTP Elite®	17795	13949	MAGENTA
					20259	KIT, MTP®, UNIVERSAL, MALE, MM, 3.0 RND, FLEX BOOT, MAGENTA	MM	17799	13949	MAGENTA
					20260	KIT, MTP®, UNIVERSAL, MALE, MM MTP Elite®, 3.0 RND, FLEX BOOT, MAGENTA	MM MTP Elite®	17800	13949	MAGENTA
5	PIN CLAMP or PIN SPACER	SEE KIT TABLE COLUMN A	1	NOTE 1	20261	KIT, MTP®, UNIVERSAL, FEMALE, MM, 3.0 RND, FLEX BOOT, HEATHER VIOLET	MM or MM MTP Elite®	17795	16693	HEATHER VIOLET
					20262	KIT, MTP®, UNIVERSAL, MALE, MM, 3.0 RND, FLEX BOOT, HEATHER VIOLET	MM	17799	16693	HEATHER VIOLET
					20263	KIT, MTP®, UNIVERSAL, MALE, MM MTP Elite®, 3.0 RND, FLEX BOOT, HEATHER VIOLET	MM MTP Elite®	17800	16693	HEATHER VIOLET
6	ASSEMBLY, HOUSING, MTP®	SEE KIT TABLE COLUMN B	1		20264	KIT, MTP®, UNIVERSAL, FEMALE, MM, 3.0 RND, FLEX BOOT, MUNSELL VIOLET	MM or MM MTP Elite®	17795	16791	MUNSELL VIOLET
					20265	KIT, MTP®, UNIVERSAL, MALE, MM, 3.0 RND, FLEX BOOT, MUNSELL VIOLET	MM	17799	16791	MUNSELL VIOLET
7	DUST CAP, MTP®	17242	1		20266	KIT, MTP®, UNIVERSAL, MALE, MM MTP Elite®, 3.0 RND, FLEX BOOT, MUNSELL VIOLET	MM MTP Elite®	17800	16791	MUNSELL VIOLET
					20267	KIT, MTP®, UNIVERSAL, FEMALE, MM, 3.0 RND, FLEX BOOT, LIME	MM or MM MTP Elite®	17795	18829	LIME
					20268	KIT, MTP®, UNIVERSAL, MALE, MM, 3.0 RND, FLEX BOOT, LIME	MM	17799	18829	LIME
					20269	KIT, MTP®, UNIVERSAL, MALE, MM MTP Elite®, 3.0 RND, FLEX BOOT, LIME	MM MTP Elite®	17800	18829	LIME
					20270	KIT, MTP®, UNIVERSAL, FEMALE, SM, 3.0 RND, FLEX BOOT, GREEN	SM	17795	16007	GREEN
					20271	KIT, MTP®, UNIVERSAL, MALE, SM, 3.0 RND, FLEX BOOT, GREEN	SM	17800	16007	GREEN
					20272	KIT, MTP®, UNIVERSAL, FEMALE, SM MTP Elite®, 3.0 RND, FLEX BOOT, YELLOW	SM MTP Elite®	17795	16918	YELLOW
					20273	KIT, MTP®, UNIVERSAL, MALE, SM MTP Elite®, 3.0 RND, FLEX BOOT, YELLOW	SM MTP Elite®	17801	16918	YELLOW

NOTES:
1. MALE CONNECTOR KIT HAS PIN CLAMP ASSEMBLY.
FEMALE CONNECTOR KIT HAS FEMALE PIN SPACER.



USCONEC LTD. PROPRIETARY
THIS DOCUMENT AND THE ASSOCIATED DATA CONTAIN RESTRICTED INFORMATION THAT IS USCONEC LTD. PROPERTY. DISCLOSE OR DUPLICATE FOR OTHERS ONLY AS AUTHORIZED BY USCONEC LTD.

REV.	DATE	DESCRIPTION	ECN
X1	4/12/19	--	
A	6/27/19	REMOVED ASSY WITH ADAPTER	2211-mm
		INITIAL RELEASE	

▲ DENOTES CRITICAL DIMENSION

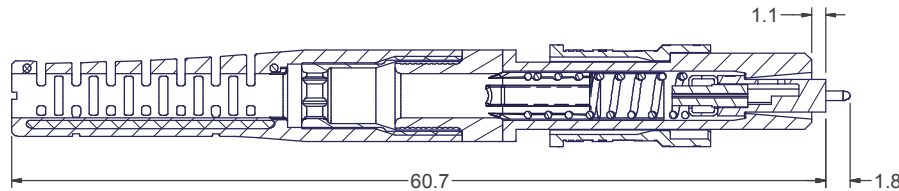
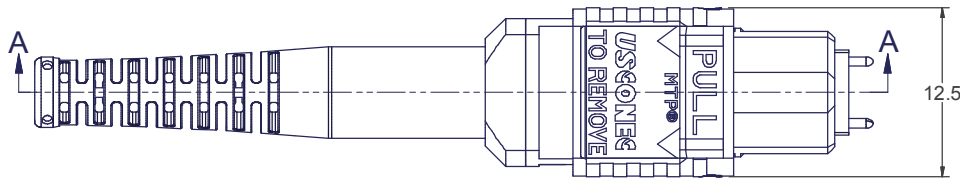
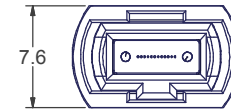
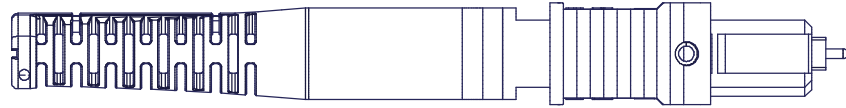
CUSTOMER DRAWING

USCONEC Hickory, NC
800-769-0944
www.usconec.com

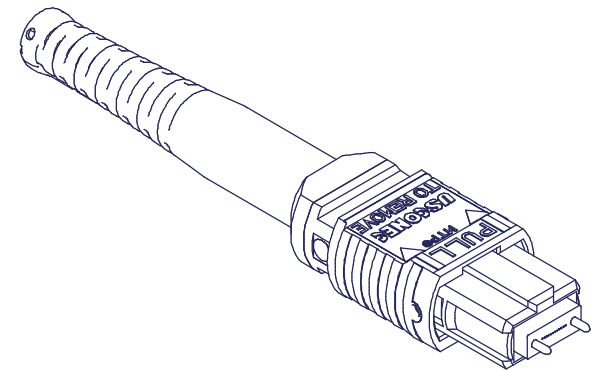
TITLE
KIT, MTP® CONNECTOR, UNIVERSAL,
2.8 - 3.2mm RND CBL, MTP® FLEX BOOT

SIZE A3 S&M Part No.: SEE TABLE DWG NO. C20251 REV. A

SCALE N.T.S. Drafter M.McCROSKEY Date: 4/12/2019 SHEET 1 OF 2



SECTION A-A



▲ DENOTES CRITICAL DIMENSION

USCONEC LTD. PROPRIETARY
THIS DOCUMENT AND THE ASSOCIATED DATA CONTAIN RESTRICTED
INFORMATION THAT IS USCONEC LTD. PROPERTY. DISCLOSE OR DUPLICATE FOR
OTHERS ONLY AS AUTHORIZED BY USCONEC LTD.

Material:

REV.	DATE	DESCRIPTION	ECN

CUSTOMER
DRAWING

DIMENSIONS FOR REFERENCE
ONLY

THIRD ANGLE PROJECTION



METRIC/mm

USCONEC

Hickory, NC
800-769-0944
www.usconec.com

TITLE
KIT, MTP® CONNECTOR, UNIVERSAL,
2.8 - 3.2mm RND CBL, MTP® FLEX BOOT

SIZE A3	S&M Part No.: SEE SHEET 1	DWG NO. C20251	REV A
SCALE N.T.S.	Drafter M.McCROSKEY	Date: 4/12/2019	SHEET 2 OF 2