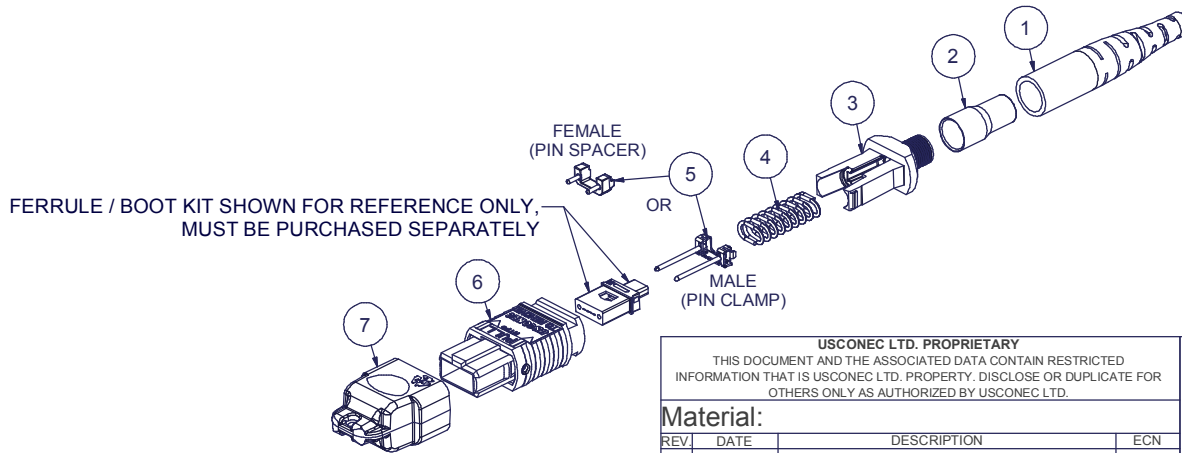


Parts List				
ITEM	DESCRIPTION	PART NUMBER	QTY	NOTES
1	BOOT, ROUND, MTP®	8041	1	
2	CRIMP BAND, 3.0 ROUND, MTP®	15633	1	
3	SPRING PUSH, UNIV., 3.0mm RND	19692	1	
4	SPRING, UNIVERSAL, 20N	17698	1	
5	PIN CLAMP or PIN SPACER, UNIVERSAL	SEE KIT TABLE COLUMN A	1	NOTE 1
6	ASSEMBLY, HOUSING, MTP®	SEE KIT TABLE COLUMN B	1	
7	DUST CAP, MTP®	17242	1	

NOTES:
 1. MALE CONNECTOR KIT HAS PIN CLAMP ASSEMBLY.
 FEMALE CONNECTOR KIT HAS FEMALE PIN SPACER.

KIT P/N	KIT DESCRIPTION	PERFORMANCE	COLUMN A	COLUMN B	HSG ASSY COLOR
			PIN CLAMP/ SPACER P/N	HSG ASSY P/N	
20182	KIT, MTP®, UNIVERSAL, FEMALE, MM, 3.0 RND, HSF, BEIGE	MM	17795	MTP-A12-11	BEIGE
20183	KIT, MTP®, UNIVERSAL, MALE, MM, 3.0 RND, HSF, BEIGE	MM	17799	MTP-A12-11	BEIGE
20184	KIT, MTP®, UNIVERSAL, FEMALE, MM, 3.0 RND, HSF, BLACK	MM	17795	MTP-A12-02	BLACK
20185	KIT, MTP®, UNIVERSAL, MALE, MM, 3.0 RND, HSF, BLACK	MM	17799	MTP-A12-02	BLACK
20186	KIT, MTP®, UNIVERSAL, FEMALE, MM, 3.0 RND, HSF, AQUA	MM or MM MTP Elite®	17795	7871	AQUA
20187	KIT, MTP®, UNIVERSAL, MALE, MM, 3.0 RND, HSF, AQUA	MM	17799	7871	AQUA
20188	KIT, MTP®, UNIVERSAL, MALE, MM MTP Elite®, 3.0 RND, HSF, AQUA	MM MTP Elite®	17800	7871	AQUA
20189	KIT, MTP®, UNIVERSAL, FEMALE, MM, 3.0 RND, HSF, MAGENTA	MM or MM MTP Elite®	17795	13949	MAGENTA
20190	KIT, MTP®, UNIVERSAL, MALE, MM, 3.0 RND, HSF, MAGENTA	MM	17799	13949	MAGENTA
20191	KIT, MTP®, UNIVERSAL, MALE, MM MTP Elite®, 3.0 RND, HSF, MAGENTA	MM MTP Elite®	17800	13949	MAGENTA
20192	KIT, MTP®, UNIVERSAL, FEMALE, MM, 3.0 RND, HSF, HEATHER VIOLET	MM or MM MTP Elite®	17795	16693	HEATHER VIOLET
20193	KIT, MTP®, UNIVERSAL, MALE, MM, 3.0 RND, HSF, HEATHER VIOLET	MM	17799	16693	HEATHER VIOLET
20194	KIT, MTP®, UNIVERSAL, MALE, MM MTP Elite®, 3.0 RND, HSF, HEATHER VIOLET	MM MTP Elite®	17800	16693	HEATHER VIOLET
20195	KIT, MTP®, UNIVERSAL, FEMALE, MM, 3.0 RND, HSF, MUNSELL VIOLET	MM or MM MTP Elite®	17795	16791	MUNSELL VIOLET
20196	KIT, MTP®, UNIVERSAL, MALE, MM, 3.0 RND, HSF, MUNSELL VIOLET	MM	17799	16791	MUNSELL VIOLET
20197	KIT, MTP®, UNIVERSAL, MALE, MM MTP Elite®, 3.0 RND, HSF, MUNSELL VIOLET	MM MTP Elite®	17800	16791	MUNSELL VIOLET
20198	KIT, MTP®, UNIVERSAL, FEMALE, MM, 3.0 RND, HSF, LIME	MM or MM MTP Elite®	17795	18829	LIME
20199	KIT, MTP®, UNIVERSAL, MALE, MM, 3.0 RND, HSF, LIME	MM	17799	18829	LIME
20200	KIT, MTP®, UNIVERSAL, MALE, MM MTP Elite®, 3.0 RND, HSF, LIME	MM MTP Elite®	17800	18829	LIME
20201	KIT, MTP®, UNIVERSAL, FEMALE, SM, 3.0 RND, HSF, GREEN	SM	17795	16007	GREEN
20202	KIT, MTP®, UNIVERSAL, MALE, SM, 3.0 RND, HSF, GREEN	SM	17800	16007	GREEN
20203	KIT, MTP®, UNIVERSAL, FEMALE, SM MTP Elite®, 3.0 RND, HSF, YELLOW	SM MTP Elite®	17795	16918	YELLOW
20204	KIT, MTP®, UNIVERSAL, MALE, SM MTP Elite®, 3.0 RND, HSF, YELLOW	SM MTP Elite®	17801	16918	YELLOW
21554	KIT, MTP®, UNIVERSAL, MALE, SM MTP Elite®, 3.0 RND, HSF, GREEN	SM MTP Elite®	17801	16007	GREEN



USCONEC LTD. PROPRIETARY
 THIS DOCUMENT AND THE ASSOCIATED DATA CONTAIN RESTRICTED INFORMATION THAT IS USCONEC LTD. PROPERTY. DISCLOSE OR DUPLICATE FOR OTHERS ONLY AS AUTHORIZED BY USCONEC LTD.

Material:

REV.	DATE	DESCRIPTION	ECN
X1	4/10/19	---	
A	6/27/19	INITIAL RELEASE	2211-mm
B	7/9/19	ADDED KIT 21554 (SME W/ GREEN HSG) TO TABLE	

CUSTOMER DRAWING

DIMENSIONS FOR REFERENCE ONLY

THIRD ANGLE PROJECTION

METRIC/mm

▲ DENOTES CRITICAL DIMENSION

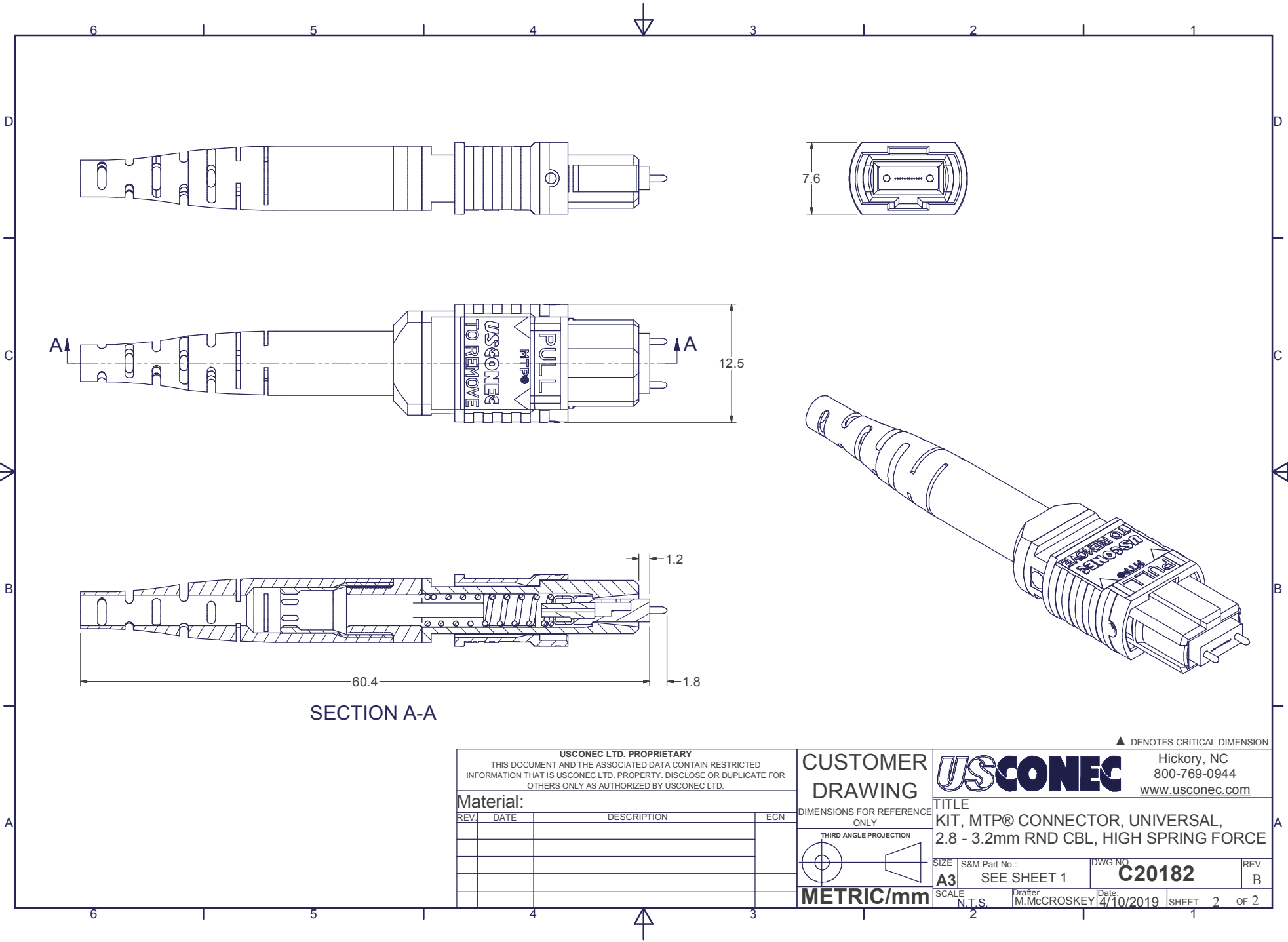
Hickory, NC
 800-769-0944
www.usconec.com

USCONEC

TITLE
 KIT, MTP® CONNECTOR, UNIVERSAL,
 2.8 - 3.2mm RND CBL, HIGH SPRING FORCE

SIZE: A3 S&M Part No.: SEE TABLE DWG NO: **C20182** REV: B

SCALE: N.T.S. Drafter: M.McCROSKEY Date: 4/10/2019 SHEET 1 OF 2



SECTION A-A

▲ DENOTES CRITICAL DIMENSION

USCONEC LTD. PROPRIETARY
 THIS DOCUMENT AND THE ASSOCIATED DATA CONTAIN RESTRICTED INFORMATION THAT IS USCONEC LTD. PROPERTY. DISCLOSE OR DUPLICATE FOR OTHERS ONLY AS AUTHORIZED BY USCONEC LTD.

Material:

REV.	DATE	DESCRIPTION	ECN

CUSTOMER DRAWING

DIMENSIONS FOR REFERENCE ONLY

THIRD ANGLE PROJECTION

METRIC/mm

USCONEC Hickory, NC
 800-769-0944
www.usconec.com

TITLE
 KIT, MTP® CONNECTOR, UNIVERSAL,
 2.8 - 3.2mm RND CBL, HIGH SPRING FORCE

SIZE A3	S&M Part No.: SEE SHEET 1	DWG NO. C20182	REV B
SCALE N.T.S.	Drafter M.McCROSKEY	Date: 4/10/2019	SHEET 2 OF 2