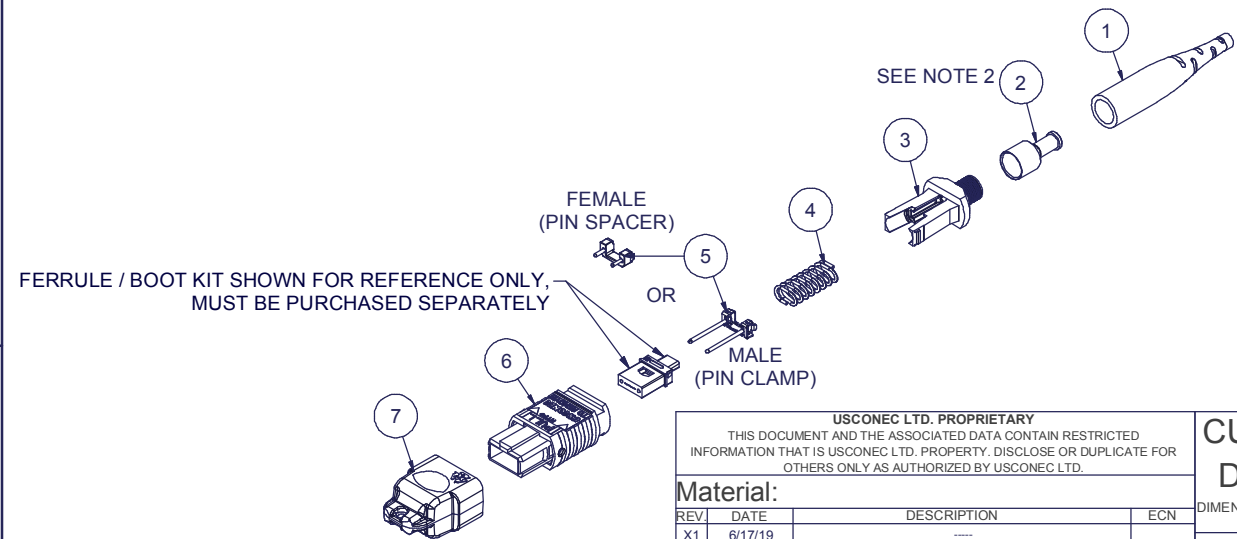


| Parts List | | | |
|------------|---------------------------------------|------------------------|--------|
| ITEM | DESCRIPTION | PART NUMBER | NOTES |
| 1 | STRAIN RELIEF BOOT | 14922 | |
| 2 | CRIMP BAND, 2.0 mm, MTP®, HEAT SHRINK | 16424 | |
| 3 | SPRING PUSH, UNIV., 3.0mm RND | 19692 | |
| 4 | SPRING, UNIVERSAL, 9.8N, MTP® | 17167 | |
| 5 | PIN CLAMP or PIN SPACER | SEE KIT TABLE COLUMN A | NOTE 1 |
| 6 | ASSEMBLY, HOUSING, MTP® | SEE KIT TABLE COLUMN B | |
| 7 | DUST CAP, MTP® | 17242 | |

NOTES:

1. MALE CONNECTOR KIT HAS PIN CLAMP ASSEMBLY. FEMALE CONNECTOR KIT HAS FEMALE PIN SPACER.
2. HEAT-SHRINK TUBING RECOMMENDED FOR SECURING CRIMP BAND TO CABLE. HEAT-SHRINK TUBING NOT INCLUDED.

| KIT P/N | KIT DESCRIPTION | PERFORMANCE | COLUMN A | COLUMN B | HSG ASSY COLOR |
|---------|--|---------------------|----------------------|--------------|----------------|
| | | | PIN CLAMP/SPACER P/N | HSG ASSY P/N | |
| 20113 | KIT, MTP®, UNIV., FEMALE, MM, 2.0mm RND, BEIGE | MM | 17795 | MTP-A12-11 | BEIGE |
| 20114 | KIT, MTP®, UNIV., MALE, MM, 2.0mm RND, BEIGE | MM | 17799 | MTP-A12-11 | BEIGE |
| 20115 | KIT, MTP®, UNIV., FEMALE, MM, 2.0mm RND, BLACK | MM | 17795 | MTP-A12-02 | BLACK |
| 20116 | KIT, MTP®, UNIV., MALE, MM, 2.0mm RND, BLACK | MM | 17799 | MTP-A12-02 | BLACK |
| 20117 | KIT, MTP®, UNIV., FEMALE, MM, 2.0mm RND, AQUA | MM or MM MTP Elite® | 17795 | 7871 | AQUA |
| 20118 | KIT, MTP®, UNIV., MALE, MM, 2.0mm RND, AQUA | MM | 17799 | 7871 | AQUA |
| 20119 | KIT, MTP®, UNIV., MALE, MM MTP Elite®, 2.0mm RND, AQUA | MM MTP Elite® | 17800 | 7871 | AQUA |
| 20120 | KIT, MTP®, UNIV., FEMALE, MM, 2.0mm RND, MAGENTA | MM or MM MTP Elite® | 17795 | 13949 | MAGENTA |
| 20121 | KIT, MTP®, UNIV., MALE, MM, 2.0mm RND, MAGENTA | MM | 17799 | 13949 | MAGENTA |
| 20122 | KIT, MTP®, UNIV., MALE, MM MTP Elite®, 2.0mm RND, MAGENTA | MM MTP Elite® | 17800 | 13949 | MAGENTA |
| 20123 | KIT, MTP®, UNIV., FEMALE, MM, 2.0mm RND, HEATHER VIOLET | MM or MM MTP Elite® | 17795 | 16693 | HEATHER VIOLET |
| 20124 | KIT, MTP®, UNIV., MALE, MM, 2.0mm RND, HEATHER VIOLET | MM | 17799 | 16693 | HEATHER VIOLET |
| 20125 | KIT, MTP®, UNIV., MALE, MM MTP Elite®, 2.0mm RND, HEATHER VIOLET | MM MTP Elite® | 17800 | 16693 | HEATHER VIOLET |
| 20126 | KIT, MTP®, UNIV., FEMALE, MM, 2.0mm RND, MUNSELL VIOLET | MM or MM MTP Elite® | 17795 | 16791 | MUNSELL VIOLET |
| 20127 | KIT, MTP®, UNIV., MALE, MM, 2.0mm RND, MUNSELL VIOLET | MM | 17799 | 16791 | MUNSELL VIOLET |
| 20128 | KIT, MTP®, UNIV., MALE, MM MTP Elite®, 2.0mm RND, MUNSELL VIOLET | MM MTP Elite® | 17800 | 16791 | MUNSELL VIOLET |
| 20129 | KIT, MTP®, UNIV., FEMALE, MM, 2.0mm RND, LIME | MM or MM MTP Elite® | 17795 | 18829 | LIME |
| 20130 | KIT, MTP®, UNIV., MALE, MM, 2.0mm RND, LIME | MM | 17799 | 18829 | LIME |
| 20131 | KIT, MTP®, UNIV., MALE, MM MTP Elite®, 2.0mm RND, LIME | MM MTP Elite® | 17800 | 18829 | LIME |
| 20132 | KIT, MTP®, UNIV., FEMALE, SM, 2.0mm RND, GREEN | SM | 17795 | 16007 | GREEN |
| 20133 | KIT, MTP®, UNIV., MALE, SM, 2.0mm RND, GREEN | SM | 17800 | 16007 | GREEN |
| 20134 | KIT, MTP®, UNIV., FEMALE, SM MTP Elite®, 2.0mm RND, YELLOW | SM MTP Elite® | 17795 | 16918 | YELLOW |
| 20135 | KIT, MTP®, UNIV., MALE, SM MTP Elite®, 2.0mm RND, YELLOW | SM MTP Elite® | 17801 | 16918 | YELLOW |



USCONEC LTD. PROPRIETARY
THIS DOCUMENT AND THE ASSOCIATED DATA CONTAIN RESTRICTED INFORMATION THAT IS USCONEC LTD. PROPERTY. DISCLOSE OR DUPLICATE FOR OTHERS ONLY AS AUTHORIZED BY USCONEC LTD.

| REV. | DATE | DESCRIPTION | ECN |
|------|---------|-----------------|---------|
| X1 | 6/17/19 | ---- | 2183-mm |
| A | 7/2/19 | INITIAL RELEASE | |

CUSTOMER DRAWING

DIMENSIONS FOR REFERENCE ONLY

THIRD ANGLE PROJECTION

METRIC/mm

▲ DENOTES CRITICAL DIMENSION

Hickory, NC
800-769-0944
www.usconec.com

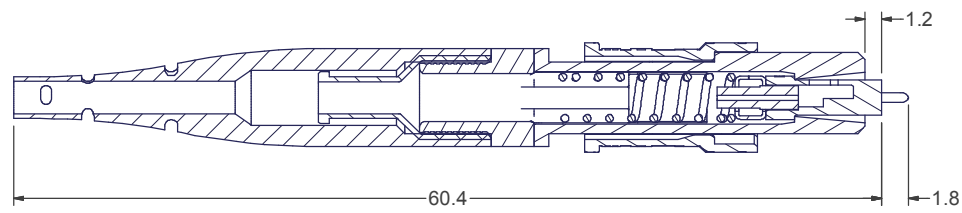
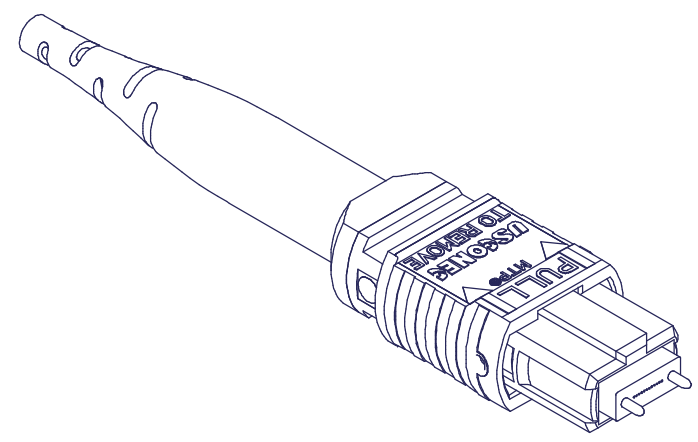
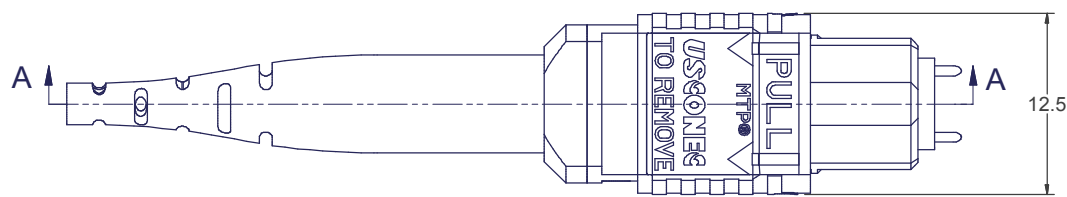
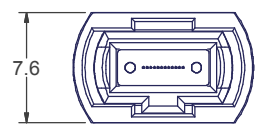
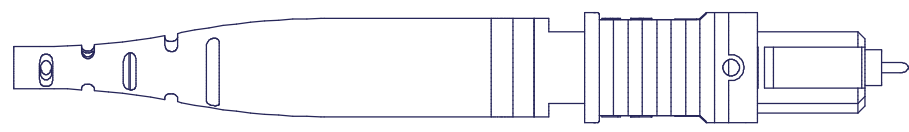
USCONEC

TITLE
KIT, MTP® CONNECTOR, UNIVERSAL,
1.8 - 2.2 mm ROUND CABLE

| | | | |
|-------------------|----------------------------|--------------------------|--------------|
| SIZE A3 | S&M Part No.: SEE TABLE | DWG NO. C20113 | REV A |
| SCALE N.T.S. | Drafter M. McCROSKEY | Date 6/17/2019 | SHEET 1 OF 2 |

6 5 4 3 2 1

D
C
B
A



SECTION A-A

▲ DENOTES CRITICAL DIMENSION

USCONEC LTD. PROPRIETARY
THIS DOCUMENT AND THE ASSOCIATED DATA CONTAIN RESTRICTED
INFORMATION THAT IS USCONEC LTD. PROPERTY. DISCLOSE OR DUPLICATE FOR
OTHERS ONLY AS AUTHORIZED BY USCONEC LTD.

Material:

| REV. | DATE | DESCRIPTION | ECN |
|------|------|-------------|-----|
| | | | |
| | | | |
| | | | |

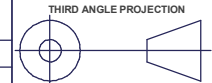
CUSTOMER
DRAWING



Hickory, NC
800-769-0944
www.usconec.com

DIMENSIONS FOR REFERENCE
ONLY

TITLE
KIT, MTP® CONNECTOR, UNIVERSAL,
1.8 - 2.2 mm ROUND CABLE



| | | | |
|-------------------|----------------------------|--------------------------|----------|
| SIZE A3 | S&M Part No.: SEE TABLE | DWG NO. C20113 | REV A |
|-------------------|----------------------------|--------------------------|----------|

METRIC/mm

| | | | | |
|-----------------|-------------------------|-------------------|------------|------|
| SCALE N.T.S. | Drafter M. McCROSKEY | Date 6/17/2019 | SHEET 2 | OF 2 |
|-----------------|-------------------------|-------------------|------------|------|

6 5 4 3 2 1