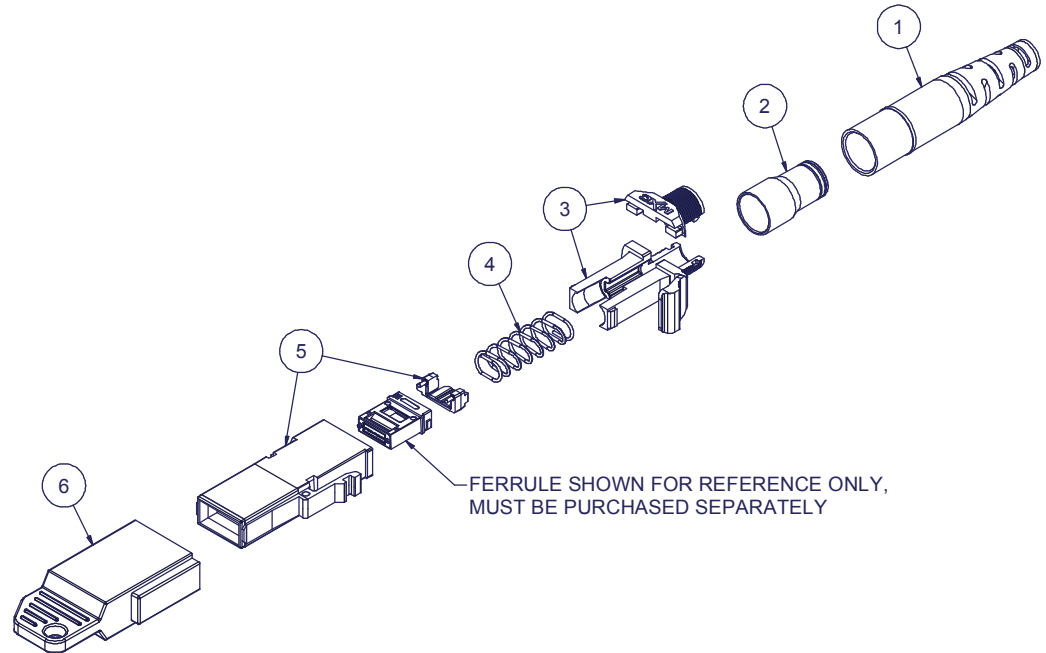


Parts List			
ITEM	DESCRIPTION	PART NUMBER	QTY
1	BOOT, ROUND	12165	1
2	CRIMP BAND	17776	1
3	SPRING PUSH W/ TRIGGER, 2 PC, MXC®	SEE KIT TABLE, COLUMN A	1
4	SPRING, UNIVERSAL, 3.1N	19326	1
5	HOUSING W/ SPACER, MXC®	SEE KIT TABLE, COLUMN B	1
6	DUST CAP, for MXC® PLUG	SEE KIT TABLE, COLUMN C	1

KIT P/N	KIT DESCRIPTION	COLUMN A SPRING PUSH P/N	COLUMN B HOUSING P/N	COLUMN C DUST CAP P/N
19879	KIT, MXC® CONNECTOR, 3.6mm RND CBL, AQUA	18048	19876	15784



USCONEC LTD. PROPRIETARY
THIS DOCUMENT AND THE ASSOCIATED DATA CONTAIN RESTRICTED INFORMATION THAT IS USCONEC LTD. PROPERTY. DISCLOSE OR DUPLICATE FOR OTHERS ONLY AS AUTHORIZED BY USCONEC LTD.

Material: N/A

REV.	DATE	DESCRIPTION	ECN
X1	9/5/18	-	2167-mm
A	3/26/19	INITIAL RELEASE	

CUSTOMER DRAWING

DIMENSIONS FOR REFERENCE ONLY

THIRD ANGLE PROJECTION

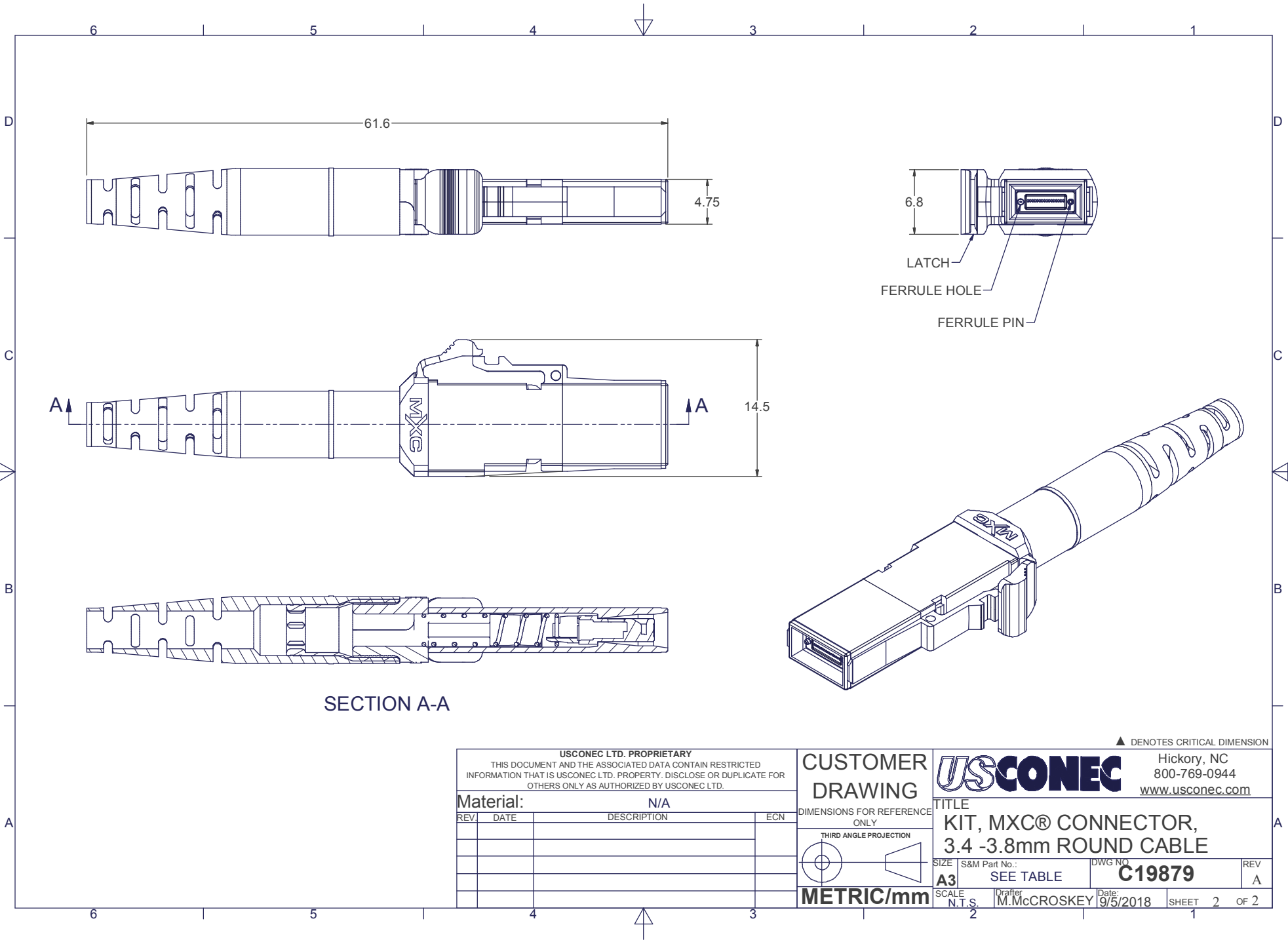
METRIC/mm

▲ DENOTES CRITICAL DIMENSION

USCONEC Hickory, NC
800-769-0944
www.usconec.com

TITLE
**KIT, MXC® CONNECTOR,
3.4 -3.8mm ROUND CABLE**

SIZE A3	S&M Part No.: SEE TABLE	DWG NO. C19879	REV A
SCALE N.T.S.	Drafter M. McCROSKEY	Date: 9/5/2018	SHEET 1 OF 2



SECTION A-A

▲ DENOTES CRITICAL DIMENSION

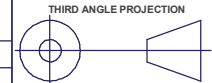
USCONEC LTD. PROPRIETARY
 THIS DOCUMENT AND THE ASSOCIATED DATA CONTAIN RESTRICTED
 INFORMATION THAT IS USCONEC LTD. PROPERTY. DISCLOSE OR DUPLICATE FOR
 OTHERS ONLY AS AUTHORIZED BY USCONEC LTD.

Material: N/A

REV.	DATE	DESCRIPTION	ECN

CUSTOMER
 DRAWING

DIMENSIONS FOR REFERENCE
 ONLY



METRIC/mm



Hickory, NC
 800-769-0944
www.usconec.com

TITLE
 KIT, MXC® CONNECTOR,
 3.4 -3.8mm ROUND CABLE

SIZE A3	S&M Part No.: SEE TABLE	DWG NO. C19879	REV A
SCALE N.T.S.	Drafter M. McCROSKEY	Date: 9/5/2018	SHEET 2 OF 2