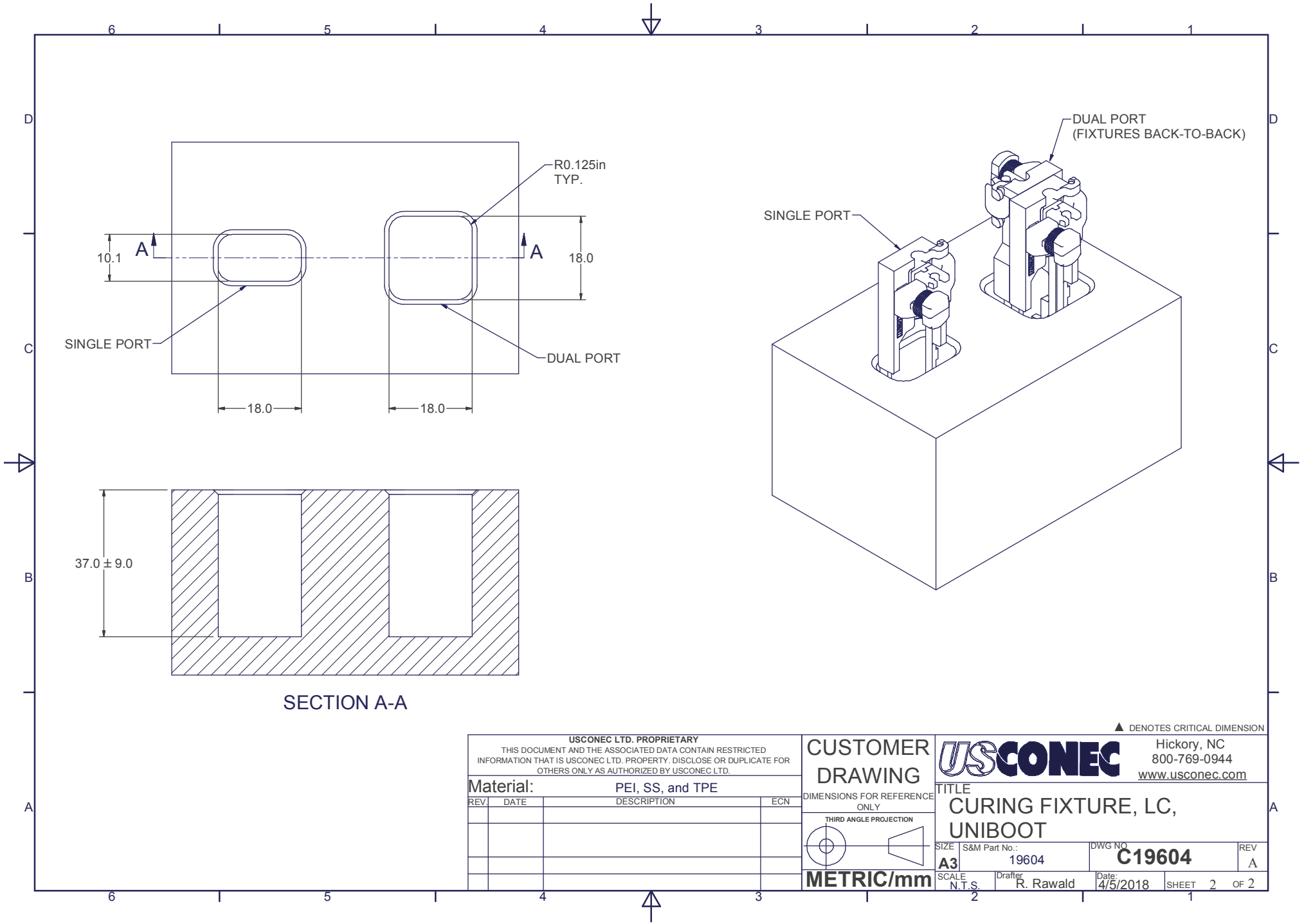


- NOTES:  
 1. COLOR: BEIGE (BASE)  
 2. SEE SHEET 2 FOR SUGGESTED OVEN BLOCK PORT SIZES

▲ DENOTES CRITICAL DIMENSION

<b>USCONEC LTD. PROPRIETARY</b> THIS DOCUMENT AND THE ASSOCIATED DATA CONTAIN RESTRICTED INFORMATION THAT IS USCONEC LTD. PROPERTY. DISCLOSE OR DUPLICATE FOR OTHERS ONLY AS AUTHORIZED BY USCONEC LTD.				<b>CUSTOMER DRAWING</b>				Hickory, NC 800-769-0944 <a href="http://www.usconec.com">www.usconec.com</a>			
<b>Material:</b> PEI, SS, and TPE				DIMENSIONS FOR REFERENCE ONLY		<b>TITLE</b> <b>CURING FIXTURE, LC, UNIBOOT</b>					
REV.	DATE	DESCRIPTION	ECN	THIRD ANGLE PROJECTION 		SIZE   S&M Part No.:		DWG NO.		REV	
X1	4/25/18	-	XXXX-rr			<b>A3</b>		<b>C19604</b>		A	
X2	7/30/18	ADDED MATL; REVISED VIEWS; PORT DEPTH 37±9 w 31.6 - 46 MAX	2150-mc			SCALE N.T.S.		Drafter R. Rawald		Date: 4/5/2018	
A	8/8/18	INITIAL RELEASE	2150-mm			SHEET 1 OF 2					



SECTION A-A

**USCONEC LTD. PROPRIETARY**  
 THIS DOCUMENT AND THE ASSOCIATED DATA CONTAIN RESTRICTED INFORMATION THAT IS USCONEC LTD. PROPERTY. DISCLOSE OR DUPLICATE FOR OTHERS ONLY AS AUTHORIZED BY USCONEC LTD.

**Material:** PEI, SS, and TPE

REV.	DATE	DESCRIPTION	ECN

**CUSTOMER DRAWING**

DIMENSIONS FOR REFERENCE ONLY

THIRD ANGLE PROJECTION

**METRIC/mm**

▲ DENOTES CRITICAL DIMENSION

**USCONEC**  
 Hickory, NC  
 800-769-0944  
[www.usconec.com](http://www.usconec.com)

**TITLE**  
**CURING FIXTURE, LC, UNIBOOT**

SIZE   S&M Part No.:	DWG NO.	REV
<b>A3</b>   19604	<b>C19604</b>	<b>A</b>
SCALE	Drafter	Date:
N.T.S.	R. Rawald	4/5/2018

SHEET 2 OF 2