

**NOTES:**

1.  $X_i = (2i - n - 1) \times 0.125$ , WHERE  $i$  CORRESPONDS TO THE  $i$ 'th FIBER PER THE NUMBERING CONVENTION, AND  $n$  IS THE TOTAL NUMBER OF FIBERS IN THE ARRAY.
2. NOMINAL TRUE POSITION OF FIBER-HOLE CENTERS IS SHIFTED IN THE 'Y' DIRECTION (TOWARD THE NON WINDOW SIDE) TO ACCOUNT FOR FERRULE TRANSLATION DUE TO THE 8° ANGLE.
3. MATERIAL: POLYPHENYLENE SULFIDE RESIN, MAT'L SPEC SHEET #C7718
4. GUIDE PINS SHOULD HAVE A DIAMETER RANGING FROM 0.6980 TO 0.6990 TO MINIMIZE INSERTION LOSS.

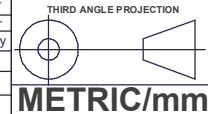
**USCONEC LTD. PROPRIETARY**  
THIS DOCUMENT AND THE ASSOCIATED DATA CONTAIN RESTRICTED INFORMATION THAT IS USCONEC LTD. PROPERTY. DISCLOSE OR DUPLICATE FOR OTHERS ONLY AS AUTHORIZED BY USCONEC LTD.

**Material:** SEE NOTES

REV	DATE	DESCRIPTION	ECN
X1	8/10/17	---	2052-rr
A	1/24/18	INITIAL RELEASE	2052-rr
B	2/13/20	REVISED GATE VESTIGE CALLOUT	2247-my

**CUSTOMER DRAWING**

DIMENSIONS FOR REFERENCE ONLY



▲ DENOTES CRITICAL DIMENSION

**USCONEC** Hickory, NC  
800-769-0944  
www.usconec.com

**TITLE**  
FERRULE, 12F, PPS, SM,  
PRE-ANGLED, 80 micron

SIZE	S&M Part No.:	DWG NO.	REV
B	18779	<b>C18779</b>	B
SCALE	Drafter	Date:	SHEET
N.T.S.	R. RAWALD	8/10/2017	1 OF 1