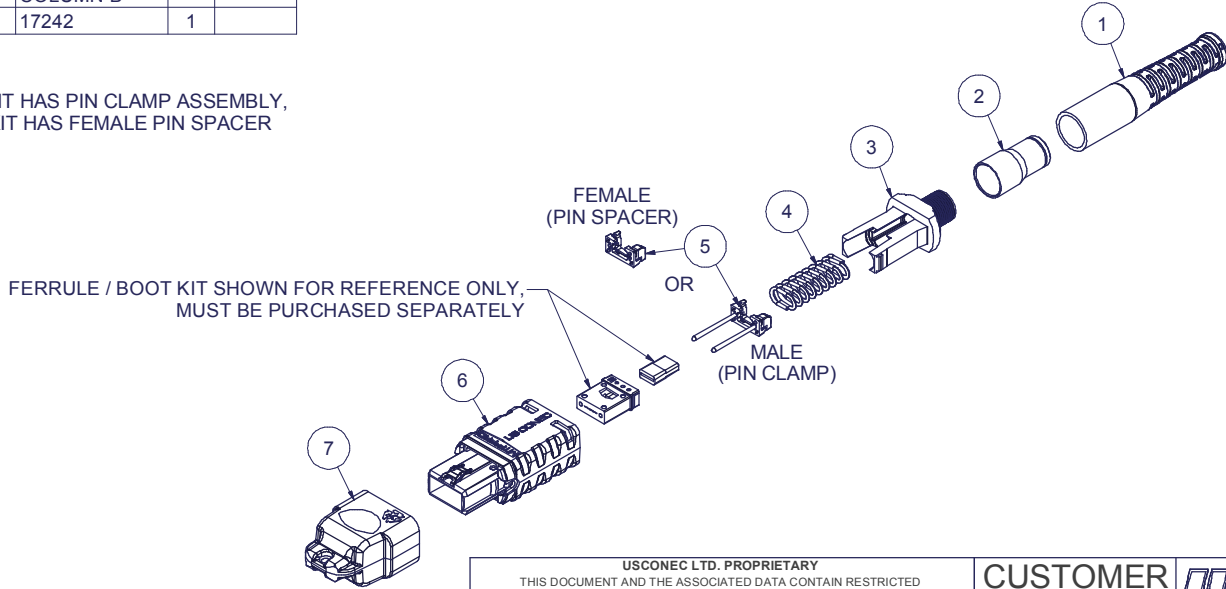


Parts List				
ITEM	DESCRIPTION	PART NUMBER	QTY	NOTES
1	BOOT, 3.6mm ROUND, MTP® FLEX	17065	1	
2	CRIMP BAND	16426	1	
3	SPRING PUSH, UNIVERSAL, 3.6 mm ROUND, MTP®	19738	1	
4	SPRING, UNIVERSAL, 20N	17698	1	
5	PIN CLAMP or PIN SPACER	SEE KIT TABLE COLUMN A	1	NOTE 1
6	HOUSING ASSY, MTP® PRO	SEE KIT TABLE COLUMN B	1	
7	DUST CAP, MTP®	17242	1	

NOTES:  
1. MALE CONNECTOR KIT HAS PIN CLAMP ASSEMBLY,  
FEMALE CONNECTOR KIT HAS FEMALE PIN SPACER

KIT P/N	KIT DESCRIPTION	PERFORMANCE	COLUMN A	COLUMN B	HSG COLOR
			PIN CLAMP/ SPACER P/N	HSG ASSY P/N	
18592	KIT, MTP® PRO, FEMALE, MM MTP Elite®, 3.6 RND, MTP® FLEX BOOT, HSF, AQUA	MM MTP Elite®	17861	18189	AQUA
18593	KIT, MTP® PRO, MALE, MM MTP Elite®, 3.6 RND, MTP® FLEX BOOT, HSF, AQUA	MM MTP Elite®	19038	18189	AQUA
18594	KIT, MTP® PRO, FEMALE, MM MTP Elite®, 3.6 RND, MTP® FLEX BOOT, HSF, HEATHER VIOLET	MM MTP Elite®	17861	18191	HEATHER VIOLET
18595	KIT, MTP® PRO, MALE, MM MTP Elite®, 3.6 RND, MTP® FLEX BOOT, HSF, HEATHER VIOLET	MM MTP Elite®	19038	18191	HEATHER VIOLET
18596	KIT, MTP® PRO, FEMALE, SM MTP Elite®, 3.6 RND, MTP® FLEX BOOT, HSF, GREEN	SM MTP Elite®	17861	18190	GREEN
18597	KIT, MTP® PRO, MALE, SM MTP Elite®, 3.6 RND, MTP® FLEX BOOT, HSF, GREEN	SM MTP Elite®	19039	18190	GREEN
21002	KIT, MTP® PRO, FEMALE, MM MTP Elite®, 3.6 RND, MTP® FLEX BOOT, HSF, LIME	MM MTP Elite®	17861	19486	LIME
21003	KIT, MTP® PRO, MALE, MM MTP Elite®, 3.6 RND, MTP® FLEX BOOT, HSF, LIME	MM MTP Elite®	19038	19486	LIME



USCONEC LTD. PROPRIETARY  
THIS DOCUMENT AND THE ASSOCIATED DATA CONTAIN RESTRICTED  
INFORMATION THAT IS USCONEC LTD. PROPERTY. DISCLOSE OR DUPLICATE FOR  
OTHERS ONLY AS AUTHORIZED BY USCONEC LTD.

**Material:**

REV	DATE	DESCRIPTION	ECN
X1	1/19/17	---	
A	6/26/19	REMOVED ASSY WITH ADAPTER	2016-mm
		INITIAL RELEASE	

▲ DENOTES CRITICAL DIMENSION

**CUSTOMER DRAWING**

**USCONEC** Hickory, NC  
800-769-0944  
www.usconec.com

TITLE  
KIT, MTP® PRO CONN., 3.4 - 3.8 mm RND,  
MTP® FLEX BOOT, HIGH SPRING FORCE

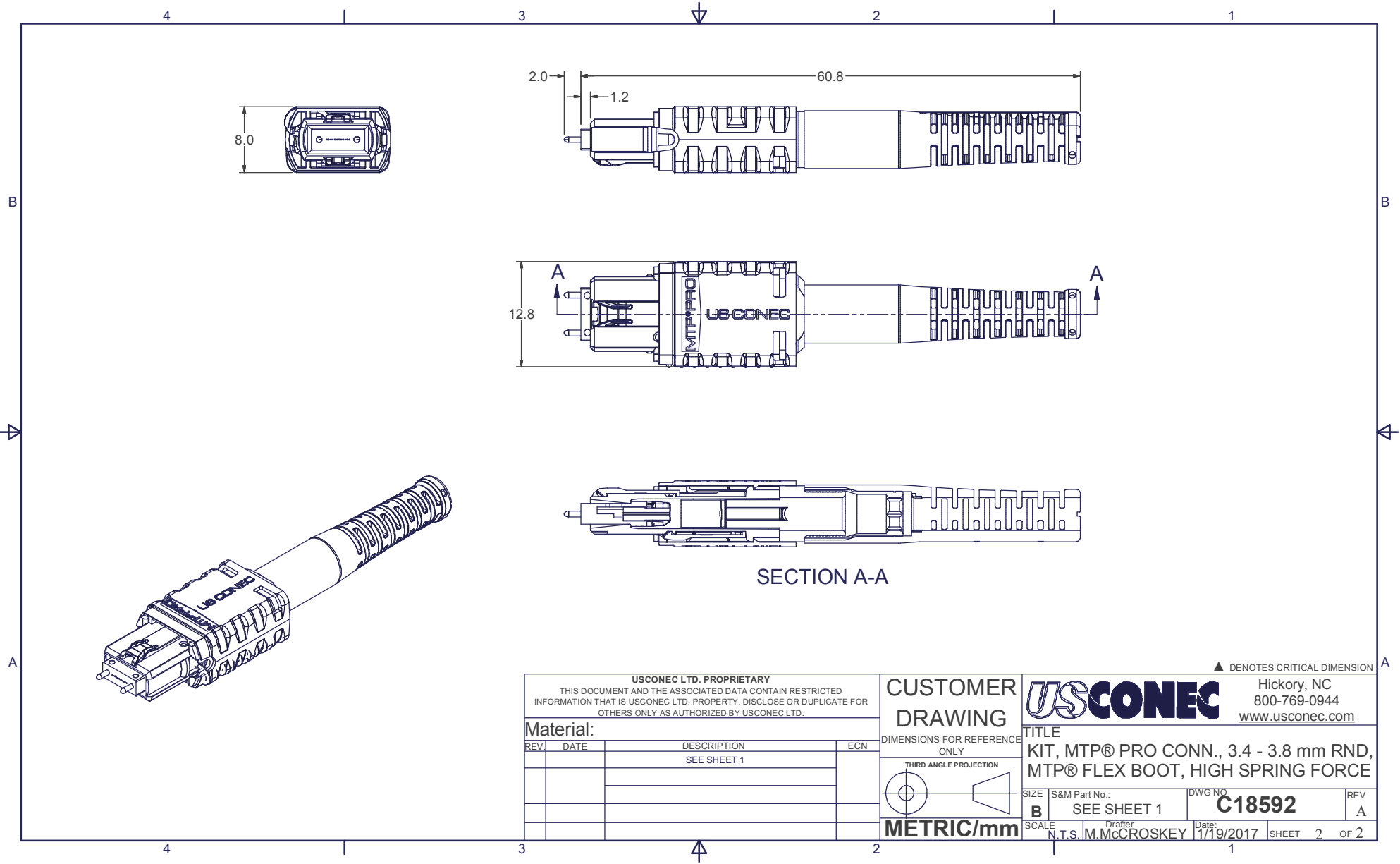
DIMENSIONS FOR REFERENCE ONLY

THIRD ANGLE PROJECTION

**METRIC/mm**

SIZE	S&M Part No.:	DWG NO.	REV
<b>B</b>	SEE TABLE	<b>C18592</b>	<b>A</b>
SCALE	Drafter	Date:	
N.T.S.	M.McCROSKEY	1/19/2017	

SHEET 1 OF 2



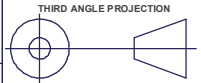
USCONEC LTD. PROPRIETARY  
 THIS DOCUMENT AND THE ASSOCIATED DATA CONTAIN RESTRICTED  
 INFORMATION THAT IS USCONEC LTD. PROPERTY. DISCLOSE OR DUPLICATE FOR  
 OTHERS ONLY AS AUTHORIZED BY USCONEC LTD.

Material:

REV	DATE	DESCRIPTION	ECN
		SEE SHEET 1	

CUSTOMER  
DRAWING

DIMENSIONS FOR REFERENCE  
ONLY



METRIC/mm

**USCONEC**  
 Hickory, NC  
 800-769-0944  
[www.usconec.com](http://www.usconec.com)

TITLE  
 KIT, MTP® PRO CONN., 3.4 - 3.8 mm RND,  
 MTP® FLEX BOOT, HIGH SPRING FORCE

SIZE	S&M Part No.:	DWG NO.	REV
<b>B</b>	SEE SHEET 1	<b>C18592</b>	<b>A</b>
SCALE	Drafter	Date:	SHEET
N.T.S.	M. McCROSKEY	1/19/2017	2 OF 2

▲ DENOTES CRITICAL DIMENSION