

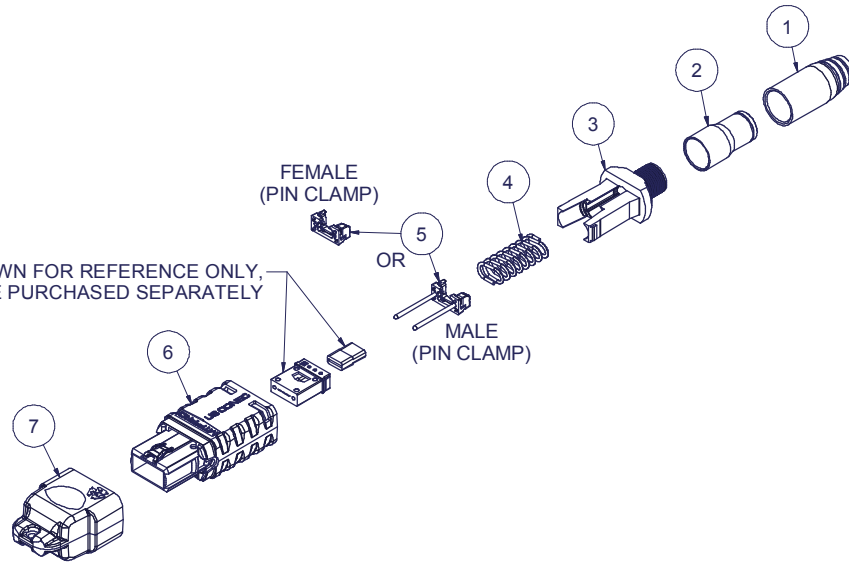
Parts List				
ITEM	DESCRIPTION	PART NUMBER	QTY	NOTES
1	BOOT, ROUND, SHORT, MTP®, 3.6 mm	13466	1	
2	CRIMP BAND, ROUND, MTP®, 3.4 - 3.8 mm CABLES	16426	1	
3	SPRING PUSH, UNIVERSAL, 3.6 mm ROUND, MTP®	19738	1	
4	SPRING, UNIVERSAL, 9.8N, MTP®	17167	1	
5	PIN CLAMP, MTP® PRO	SEE KIT TABLE COLUMN A	1	NOTE 1
6	HOUSING ASSY, MTP® PRO	SEE KIT TABLE COLUMN B	1	
7	DUST CAP, MTP®	17242	1	

KIT P/N	KIT DESCRIPTION	PERFORMANCE	COLUMN A	COLUMN B	HSG COLOR
			PIN CLAMP P/N	HSG ASSY P/N	
18574	KIT, MTP® PRO, FEMALE, MM MTP Elite®, 3.6 RND, SHORT BOOT, AQUA	MM MTP Elite®	17861	18189	AQUA
18575	KIT, MTP® PRO, MALE, MM MTP Elite®, 3.6 RND, SHORT BOOT, AQUA	MM MTP Elite®	19038	18189	AQUA
18576	KIT, MTP® PRO, FEMALE, MM MTP Elite®, 3.6 RND, SHORT BOOT, HEATHER VIOLET	MM MTP Elite®	17861	18191	HEATHER VIOLET
18577	KIT, MTP® PRO, MALE, MM MTP Elite®, 3.6 RND, SHORT BOOT, HEATHER VIOLET	MM MTP Elite®	19038	18191	HEATHER VIOLET
18578	KIT, MTP® PRO, FEMALE, SM MTP Elite®, 3.6 RND, SHORT BOOT, GREEN	SM MTP Elite®	17861	18190	GREEN
18579	KIT, MTP® PRO, MALE, SM MTP Elite®, 3.6 RND, SHORT BOOT, GREEN	SM MTP Elite®	19039	18190	GREEN
19526	KIT, MTP® PRO, FEMALE, MM MTP Elite®, 3.6 RND, SHORT BOOT, LIME	MM MTP Elite®	17861	19486	LIME
19527	KIT, MTP® PRO, MALE, MM MTP Elite®, 3.6 RND, SHORT BOOT, LIME	MM MTP Elite®	19038	19486	LIME

NOTES:

1. MALE CONNECTOR KIT HAS MALE PIN CLAMP ASSEMBLY, FEMALE CONNECTOR KIT HAS FEMALE PIN CLAMP ASSEMBLY.

FERRULE / BOOT KIT SHOWN FOR REFERENCE ONLY, MUST BE PURCHASED SEPARATELY



USCONEC LTD. PROPRIETARY
THIS DOCUMENT AND THE ASSOCIATED DATA CONTAIN RESTRICTED INFORMATION THAT IS USCONEC LTD. PROPERTY. DISCLOSE OR DUPLICATE FOR OTHERS ONLY AS AUTHORIZED BY USCONEC LTD.

Material:

REV	DATE	DESCRIPTION	ECN
X1	7/25/19	----	2231-mm
A	10/25/19	RELEASE	

CUSTOMER DRAWING

DIMENSIONS FOR REFERENCE ONLY

THIRD ANGLE PROJECTION

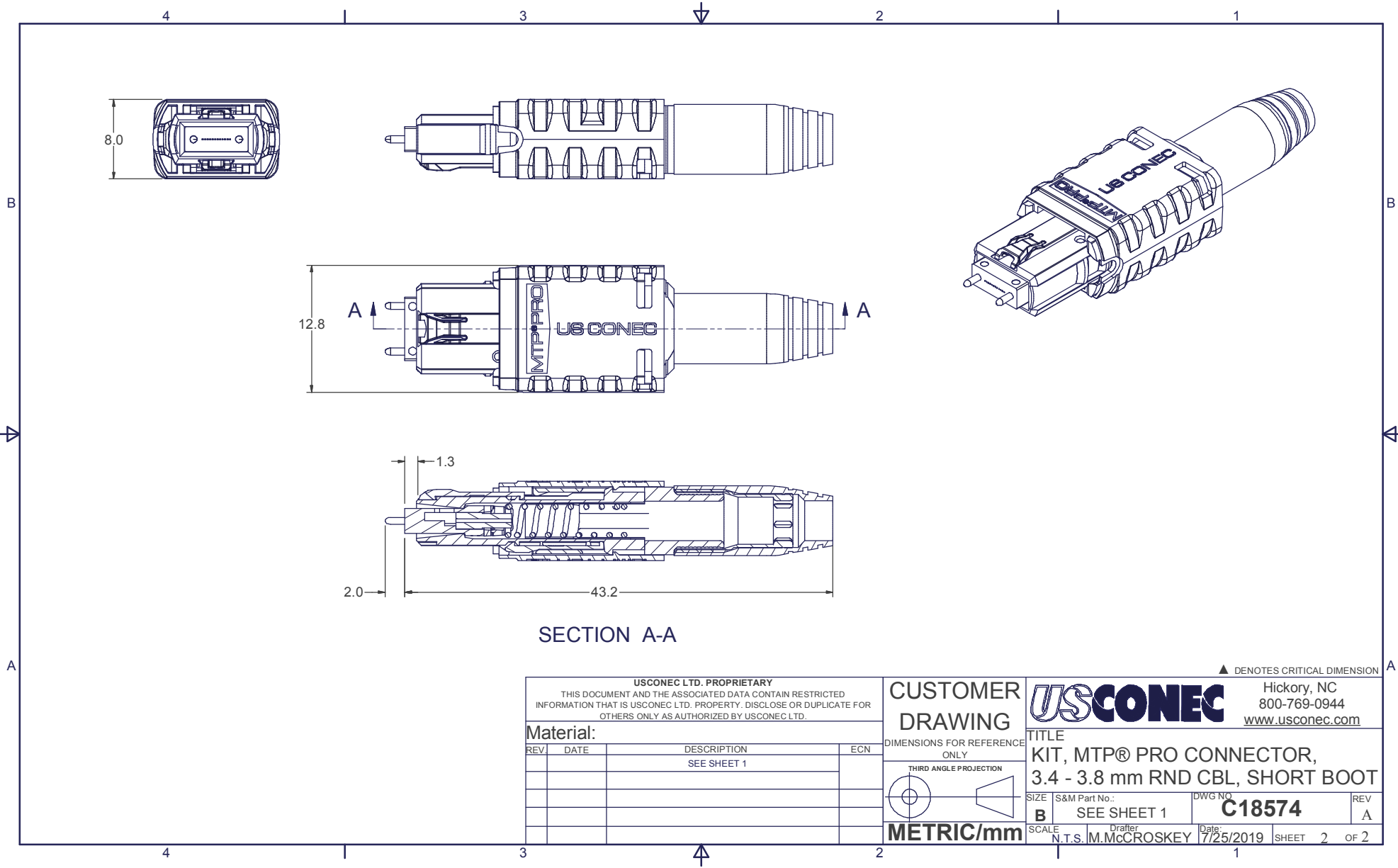
METRIC/mm

▲ DENOTES CRITICAL DIMENSION

USCONEC Hickory, NC
800-769-0944
www.usconec.com

TITLE
KIT, MTP® PRO CONNECTOR, 3.4 - 3.8 mm RND CBL, SHORT BOOT

SIZE	S&M Part No.:	DWG NO.	REV
B	SEE TABLE	C18574	A
SCALE	Drafter	Date:	SHEET
N.T.S.	M.McCROSKEY	7/25/2019	1 OF 2



SECTION A-A

USCONEC LTD. PROPRIETARY
 THIS DOCUMENT AND THE ASSOCIATED DATA CONTAIN RESTRICTED INFORMATION THAT IS USCONEC LTD. PROPERTY. DISCLOSE OR DUPLICATE FOR OTHERS ONLY AS AUTHORIZED BY USCONEC LTD.

Material:

REV	DATE	DESCRIPTION	ECN
		SEE SHEET 1	

CUSTOMER DRAWING

DIMENSIONS FOR REFERENCE ONLY

THIRD ANGLE PROJECTION

METRIC/mm

USCONEC Hickory, NC
 800-769-0944
 www.usconec.com

TITLE
**KIT, MTP® PRO CONNECTOR,
 3.4 - 3.8 mm RND CBL, SHORT BOOT**

SIZE	S&M Part No.:	DWG NO.	REV
B	SEE SHEET 1	C18574	A
SCALE	Drafter	Date:	SHEET
N.T.S.	M.McCROSKEY	7/25/2019	2 OF 2

▲ DENOTES CRITICAL DIMENSION