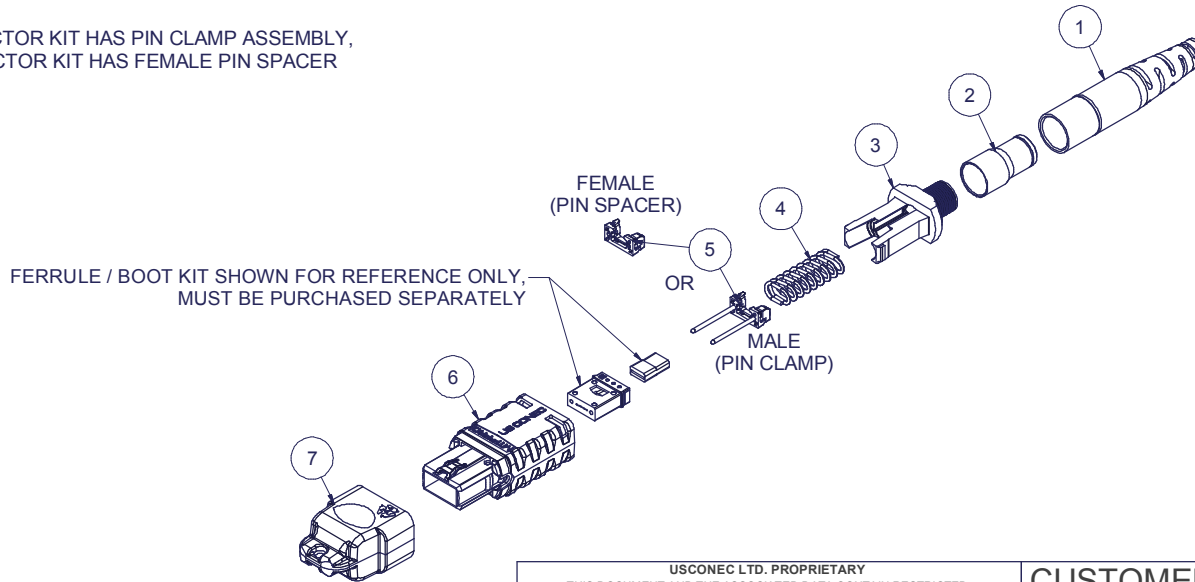


Parts List				
ITEM	DESCRIPTION	PART NUMBER	QTY	NOTES
1	BOOT, ROUND	12165	1	
2	CRIMP BAND	16426	1	
3	SPRING PUSH, UNIVERSAL, 3.6 mm ROUND, MTP®	19738	1	
4	SPRING, UNIVERSAL, 20N	17698	1	
5	PIN CLAMP or PIN SPACER	SEE KIT TABLE COLUMN A	1	NOTE 1
6	HOUSING ASSY, MTP® PRO	SEE KIT TABLE COLUMN B	1	
7	DUST CAP, MTP®	17242	1	

KIT P/N	KIT DESCRIPTION	PERFORMANCE	COLUMN A		COLUMN B	
			PIN CLAMP/SPACER P/N	HSG ASSY P/N	HSG COLOR	
18568	KIT, MTP® PRO, FEMALE, MM MTP Elite®, 3.6 RND, HSF, AQUA	MM MTP Elite®	17861	18189	AQUA	
18569	KIT, MTP® PRO, MALE, MM MTP Elite®, 3.6 RND, HSF, AQUA	MM MTP Elite®	19038	18189	AQUA	
18570	KIT, MTP® PRO, FEMALE, MM MTP Elite®, 3.6 RND, HSF, HEATHER VIOLET	MM MTP Elite®	17861	18191	HEATHER VIOLET	
18571	KIT, MTP® PRO, MALE, MM MTP Elite®, 3.6 RND, HSF, HEATHER VIOLET	MM MTP Elite®	19038	18191	HEATHER VIOLET	
18572	KIT, MTP® PRO, FEMALE, SM MTP Elite®, 3.6 RND, HSF, GREEN	SM MTP Elite®	17861	18190	GREEN	
18573	KIT, MTP® PRO, MALE, SM MTP Elite®, 3.6 RND, HSF, GREEN	SM MTP Elite®	19039	18190	GREEN	
20984	KIT, MTP® PRO, FEMALE, MM MTP Elite®, 3.6 RND, HSF, LIME	MM MTP Elite®	17861	19486	LIME	
20985	KIT, MTP® PRO, MALE, MM MTP Elite®, 3.6 RND, HSF, LIME	MM MTP Elite®	19038	19486	LIME	

NOTES:

1. MALE CONNECTOR KIT HAS PIN CLAMP ASSEMBLY, FEMALE CONNECTOR KIT HAS FEMALE PIN SPACER



USCONEC LTD. PROPRIETARY  
THIS DOCUMENT AND THE ASSOCIATED DATA CONTAIN RESTRICTED INFORMATION THAT IS USCONEC LTD. PROPERTY. DISCLOSE OR DUPLICATE FOR OTHERS ONLY AS AUTHORIZED BY USCONEC LTD.

**Material:**

REV	DATE	DESCRIPTION	ECN
X1	1/19/17	---	2016-mm
A	6/26/19	INITIAL RELEASE	

▲ DENOTES CRITICAL DIMENSION

**CUSTOMER DRAWING**

**USCONEC** Hickory, NC  
800-769-0944  
www.usconec.com

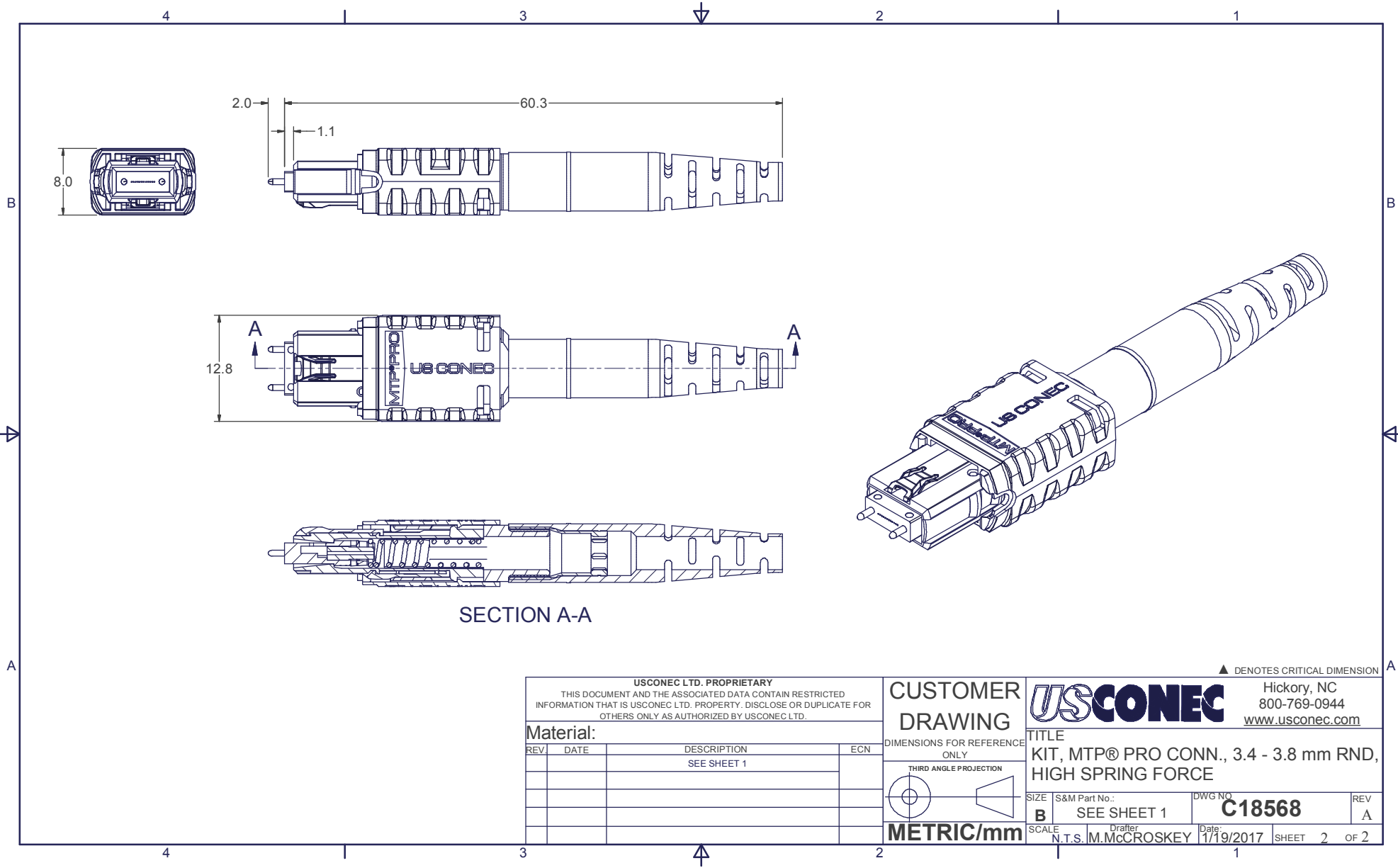
TITLE  
KIT, MTP® PRO CONN., 3.4 - 3.8 mm RND, HIGH SPRING FORCE

SIZE B S&M Part No.: SEE TABLE DWG NO. **C18568** REV A

SCALE N.T.S. Drafter M.McCROSKEY Date: 1/19/2017 SHEET 1 OF 2

METRIC/mm

THIRD ANGLE PROJECTION



SECTION A-A

**USCONEC LTD. PROPRIETARY**  
 THIS DOCUMENT AND THE ASSOCIATED DATA CONTAIN RESTRICTED INFORMATION THAT IS USCONEC LTD. PROPERTY. DISCLOSE OR DUPLICATE FOR OTHERS ONLY AS AUTHORIZED BY USCONEC LTD.

**Material:**

REV	DATE	DESCRIPTION	ECN
		SEE SHEET 1	

**CUSTOMER DRAWING**

DIMENSIONS FOR REFERENCE ONLY

THIRD ANGLE PROJECTION

**METRIC/mm**

▲ DENOTES CRITICAL DIMENSION

**USCONEC**  
 Hickory, NC  
 800-769-0944  
[www.usconec.com](http://www.usconec.com)

**TITLE**  
 KIT, MTP® PRO CONN., 3.4 - 3.8 mm RND, HIGH SPRING FORCE

SIZE	S&M Part No.:	DWG NO.	REV
<b>B</b>	SEE SHEET 1	<b>C18568</b>	<b>A</b>
SCALE	Drafter	Date:	SHEET
N.T.S.	M. McCROSKEY	1/19/2017	2 OF 2