

4

3

2

1

## Parts List

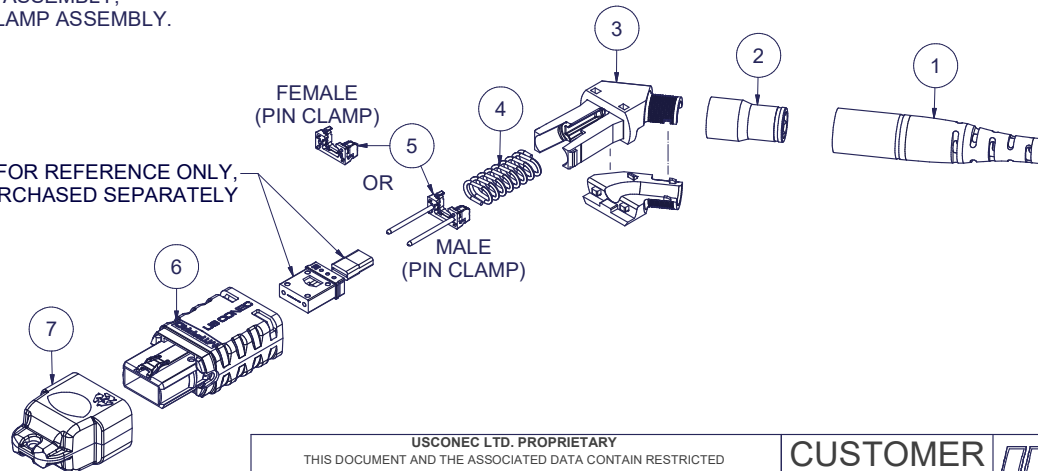
| ITEM | DESCRIPTION                          | PART NUMBER            | QTY | NOTES  |
|------|--------------------------------------|------------------------|-----|--------|
| 1    | BOOT, 3.0 CABLE, with 3.6 OD         | 16377                  | 1   |        |
| 2    | CRIMP BAND                           | 18365                  | 1   |        |
| 3    | SPRING PUSH, UNIVERSAL, 2 PC, ANGLED | 19973                  | 1   |        |
| 4    | SPRING, UNIVERSAL, 9.8N, MTP®        | 17167                  | 1   |        |
| 5    | PIN CLAMP, MTP® PRO                  | SEE KIT TABLE COLUMN A | 1   | NOTE 1 |
| 6    | HOUSING ASSY, MTP® PRO               | SEE KIT TABLE COLUMN B | 1   |        |
| 7    | DUST CAP, MTP®                       | 17242                  | 1   |        |

| KIT P/N | KIT DESCRIPTION   | PERFORMANCE   | COLUMN A<br>PIN CLAMP P/N | COLUMN B<br>HSG ASSY P/N | HSG COLOR      |
|---------|---|---------------|---------------------------|--------------------------|----------------|
| 18550   | KIT, MTP® PRO, FEMALE, MM MTP Elite®, 3.0 RND, ANGLED SPRING PUSH, AQUA           | MM MTP Elite® | 17861                     | 18189                    | AQUA           |
| 18551   | KIT, MTP® PRO, MALE, MM MTP Elite®, 3.0 RND, ANGLED SPRING PUSH, AQUA             | MM MTP Elite® | 19038                     | 18189                    | AQUA           |
| 18552   | KIT, MTP® PRO, FEMALE, MM MTP Elite®, 3.0 RND, ANGLED SPRING PUSH, HEATHER VIOLET | MM MTP Elite® | 17861                     | 18191                    | HEATHER VIOLET |
| 18553   | KIT, MTP® PRO, MALE, MM MTP Elite®, 3.0 RND, ANGLED SPRING PUSH, HEATHER VIOLET   | MM MTP Elite® | 19038                     | 18191                    | HEATHER VIOLET |
| 18554   | KIT, MTP® PRO, FEMALE, SM MTP Elite®, 3.0 RND, ANGLED SPRING PUSH, GREEN          | SM MTP Elite® | 17861                     | 18190                    | GREEN          |
| 18555   | KIT, MTP® PRO, MALE, SM MTP Elite®, 3.0 RND, ANGLED SPRING PUSH, GREEN            | SM MTP Elite® | 19039                     | 18190                    | GREEN          |
| 20994   | KIT, MTP® PRO, FEMALE, MM MTP Elite®, 3.0 RND, ANGLED SPRING PUSH, LIME           | MM MTP Elite® | 17861                     | 19486                    | LIME           |
| 20995   | KIT, MTP® PRO, MALE, MM MTP Elite®, 3.0 RND, ANGLED SPRING PUSH, LIME             | MM MTP Elite® | 19038                     | 19486                    | LIME           |

## NOTES:

1. MALE CONNECTOR KIT HAS MALE PIN CLAMP ASSEMBLY,  
FEMALE CONNECTOR KIT HAS FEMALE PIN CLAMP ASSEMBLY.

FERRULE / BOOT KIT SHOWN FOR REFERENCE ONLY,  
MUST BE PURCHASED SEPARATELY



▲ DENOTES CRITICAL DIMENSION

| USCONEC LTD. PROPRIETARY  |         |  |         |
|---|---------|--|---------|
| THIS DOCUMENT AND THE ASSOCIATED DATA CONTAIN RESTRICTED INFORMATION THAT IS USCONEC LTD. PROPERTY. DISCLOSE OR DUPLICATE FOR OTHERS ONLY AS AUTHORIZED BY USCONEC LTD. |         |  |         |
| <b>Material:</b>  |         |  |         |
| REV   | DATE    | DESCRIPTION  | ECN     |
| X1  | 1/19/17 | ----   |         |
| A   | 5/20/20 | ADD'D LIME KIT P/N'S 20994 & 20995; REM'D 'SPRING' COLUMN IN TABLE; ADD'D VIEW W/ ADAPTER ON SHT 2 | 2089-mm |
| INITIAL RELEASE   |         |  |         |

**CUSTOMER DRAWING**

DIMENSIONS FOR REFERENCE ONLY

THIRD ANGLE PROJECTION



**METRIC/mm**

**USCONEC**

Hickory, NC  
800-769-0944  
www.usconec.com

TITLE  
KIT, MTP® PRO CONN., 2.8 - 3.2 mm  
ROUND CBL, ANGLED SPRING PUSH

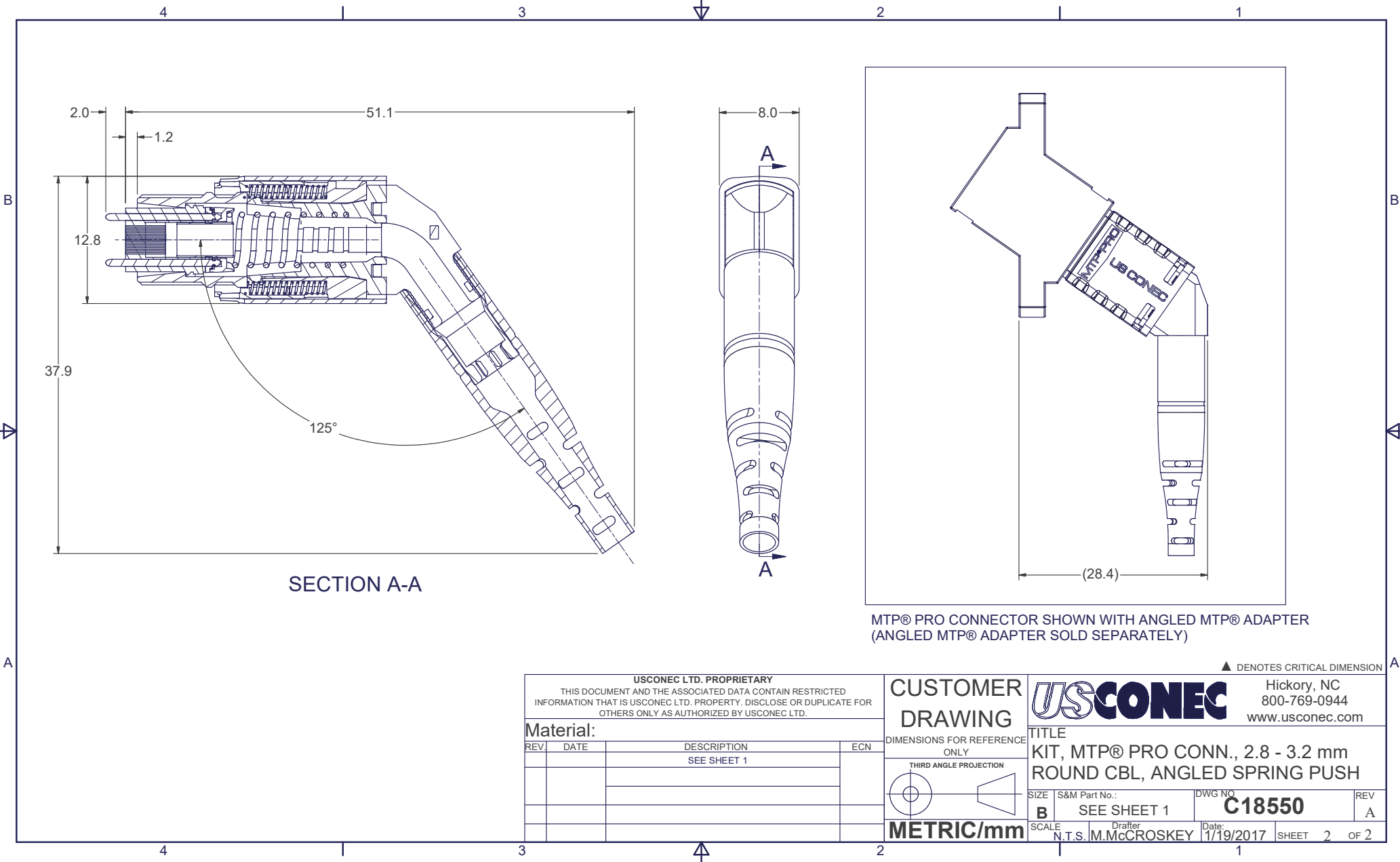
| SIZE   | S&M Part No.: | DWG NO.       | REV    |
|--------|---------------|---------------|--------|
| B      | SEE TABLE     | <b>C18550</b> | A      |
| SCALE  | Drafter       | Date:         | SHEET  |
| N.T.S. | M.McCROSKEY   | 1/19/2017     | 1 OF 2 |

4

3

2

1



SECTION A-A

MTP@ PRO CONNECTOR SHOWN WITH ANGLED MTP@ ADAPTER  
(ANGLED MTP@ ADAPTER SOLD SEPARATELY)

▲ DENOTES CRITICAL DIMENSION

**USCONEC LTD. PROPRIETARY**  
THIS DOCUMENT AND THE ASSOCIATED DATA CONTAIN RESTRICTED INFORMATION THAT IS USCONEC LTD. PROPERTY. DISCLOSE OR DUPLICATE FOR OTHERS ONLY AS AUTHORIZED BY USCONEC LTD.

**Material:**

| REV | DATE | DESCRIPTION | ECN |
|-----|------|-------------|-----|
|     |      | SEE SHEET 1 |     |
|     |      |             |     |
|     |      |             |     |

**CUSTOMER DRAWING**  
DIMENSIONS FOR REFERENCE ONLY  
THIRD ANGLE PROJECTION

**METRIC/mm**

**USCONEC**  
Hickory, NC  
800-769-0944  
www.usconec.com

**TITLE**  
KIT, MTP@ PRO CONN., 2.8 - 3.2 mm  
ROUND CBL, ANGLED SPRING PUSH

|          |               |               |          |
|----------|---------------|---------------|----------|
| SIZE     | S&M Part No.: | DWG NO.       | REV      |
| <b>B</b> | SEE SHEET 1   | <b>C18550</b> | <b>A</b> |
| SCALE    | Drafter       | Date:         | SHEET    |
| N.T.S.   | M. McCROSKEY  | 1/19/2017     | 2 OF 2   |