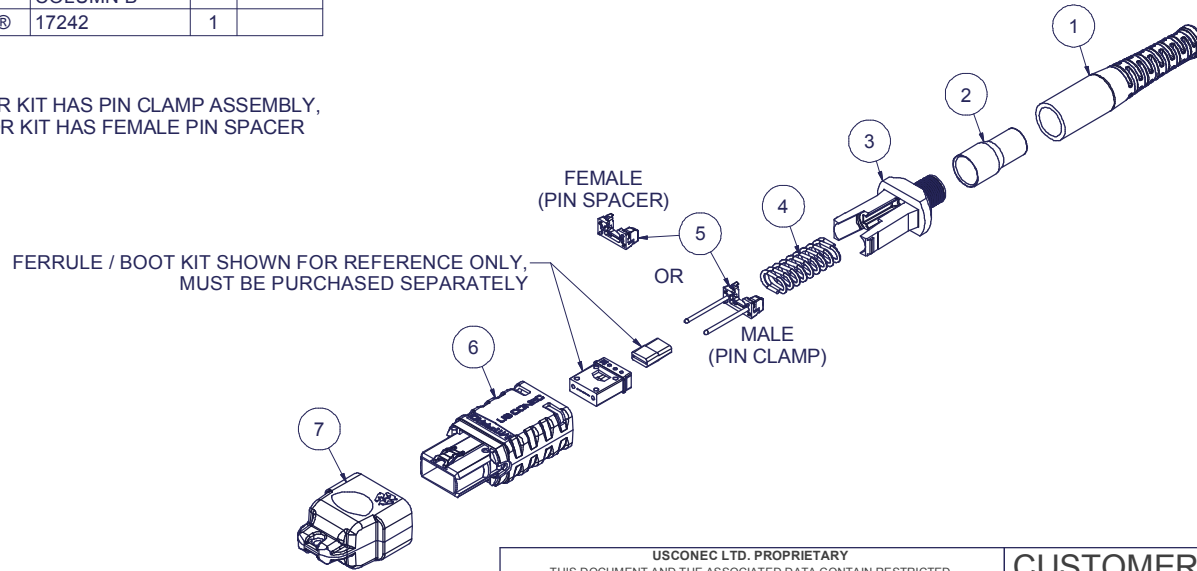


Parts List					KIT P/N		KIT DESCRIPTION		PERFORMANCE	COLUMN A PIN CLAMP/ SPACER P/N	COLUMN B HSG ASSY P/N	HSG COLOR
1	BOOT, ROUND, MTP®	15960	1		18544	KIT, MTP® PRO, FEMALE, MM MTP Elite®, 3.0 RND, MTP® FLEX BOOT, HSF, AQUA	MM MTP Elite®	17861	18189	AQUA		
2	CRIMP BAND, 3.0 ROUND, MTP®	15633	1		18545	KIT, MTP® PRO, MALE, MM MTP Elite®, 3.0 RND, MTP® FLEX BOOT, HSF, AQUA	MM MTP Elite®	19038	18189	AQUA		
3	SPRING PUSH, UNIV., 3.0mm RND	19692	1		18546	KIT, MTP® PRO, FEMALE, MM MTP Elite®, 3.0 RND, MTP® FLEX BOOT, HSF, HEATHER VIOLET	MM MTP Elite®	17861	18191	HEATHER VIOLET		
4	SPRING, UNIVERSAL, 20N	17698	1		18547	KIT, MTP® PRO, MALE, MM MTP Elite®, 3.0 RND, MTP® FLEX BOOT, HSF, HEATHER VIOLET	MM MTP Elite®	19038	18191	HEATHER VIOLET		
5	PIN CLAMP or PIN SPACER	SEE KIT TABLE COLUMN A	1	NOTE 1	18548	KIT, MTP® PRO, FEMALE, SM MTP Elite®, 3.0 RND, MTP® FLEX BOOT, HSF, GREEN	SM MTP Elite®	17861	18190	GREEN		
6	HOUSING ASSY, MTP® PRO	SEE KIT TABLE COLUMN B	1		18549	KIT, MTP® PRO, MALE, SM MTP Elite®, 3.0 RND, MTP® FLEX BOOT, HSF, GREEN	SM MTP Elite®	19039	18190	GREEN		
7	DUST CAP, MTP®	17242	1		20992	KIT, MTP® PRO, FEMALE, MM MTP Elite®, 3.0 RND, MTP® FLEX BOOT, HSF, LIME	MM MTP Elite®	17861	19486	LIME		
					20993	KIT, MTP® PRO, MALE, MM MTP Elite®, 3.0 RND, MTP® FLEX BOOT, HSF, LIME	MM MTP Elite®	19038	19486	LIME		

NOTES:

1. MALE CONNECTOR KIT HAS PIN CLAMP ASSEMBLY, FEMALE CONNECTOR KIT HAS FEMALE PIN SPACER



USCONEC LTD. PROPRIETARY  
THIS DOCUMENT AND THE ASSOCIATED DATA CONTAIN RESTRICTED INFORMATION THAT IS USCONEC LTD. PROPERTY. DISCLOSE OR DUPLICATE FOR OTHERS ONLY AS AUTHORIZED BY USCONEC LTD.

Material:

REV	DATE	DESCRIPTION	ECN
X1	1/19/17	---	
A	6/26/19	REMOVED ASSY WITH ADAPTER	2016-mm
		INITIAL RELEASE	

**CUSTOMER DRAWING**

DIMENSIONS FOR REFERENCE ONLY

THIRD ANGLE PROJECTION

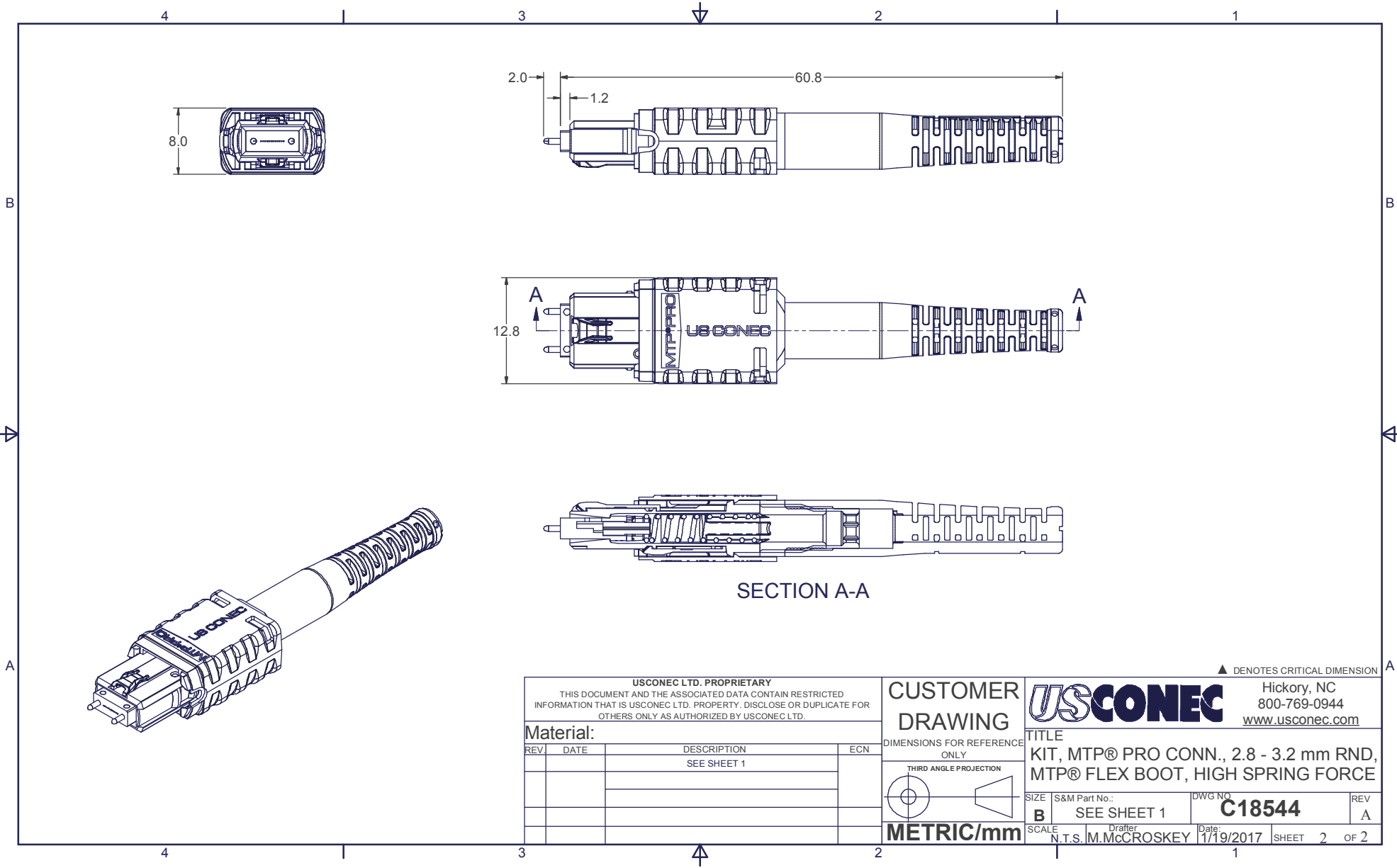
**METRIC/mm**

▲ DENOTES CRITICAL DIMENSION

**USCONEC**  
Hickory, NC  
800-769-0944  
www.usconec.com

TITLE  
KIT, MTP® PRO CONN., 2.8 - 3.2 mm RND, MTP® FLEX BOOT, HIGH SPRING FORCE

SIZE	S&M Part No.:	DWG NO.	REV
<b>B</b>	SEE TABLE	<b>C18544</b>	<b>A</b>
SCALE	Drafter	Date:	SHEET
N.T.S.	M.McCROSKEY	1/19/2017	1 OF 2



USCONEC LTD. PROPRIETARY  
 THIS DOCUMENT AND THE ASSOCIATED DATA CONTAIN RESTRICTED  
 INFORMATION THAT IS USCONEC LTD. PROPERTY. DISCLOSE OR DUPLICATE FOR  
 OTHERS ONLY AS AUTHORIZED BY USCONEC LTD.

Material:

REV	DATE	DESCRIPTION	ECN
		SEE SHEET 1	

**CUSTOMER DRAWING**

DIMENSIONS FOR REFERENCE ONLY

THIRD ANGLE PROJECTION

**METRIC/mm**

▲ DENOTES CRITICAL DIMENSION

**USCONEC** Hickory, NC  
 800-769-0944  
[www.usconec.com](http://www.usconec.com)

**TITLE**  
 KIT, MTP® PRO CONN., 2.8 - 3.2 mm RND,  
 MTP® FLEX BOOT, HIGH SPRING FORCE

SIZE	S&M Part No.:	DWG NO.	REV
<b>B</b>	SEE SHEET 1	<b>C18544</b>	<b>A</b>
SCALE	Drafter	Date:	SHEET
N.T.S.	M.McCROSKEY	1/19/2017	2 OF 2