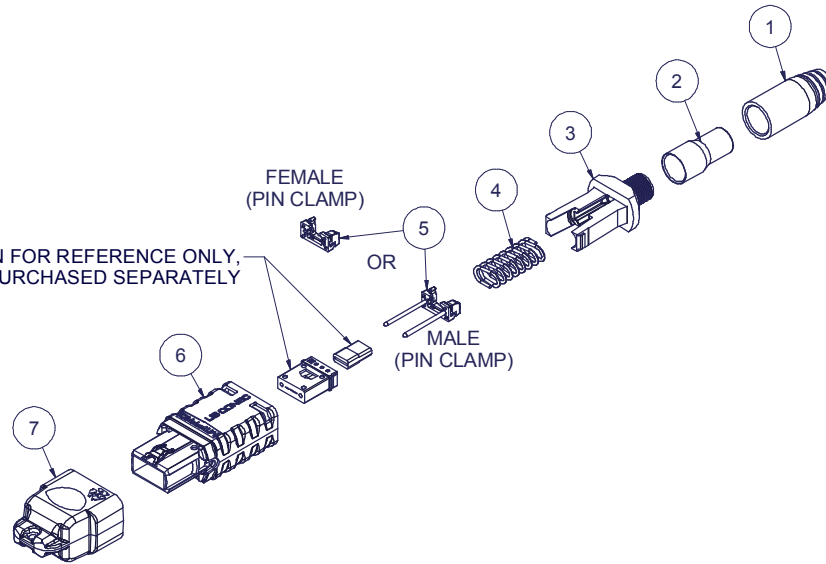


Parts List					Parts List					
ITEM	DESCRIPTION	PART NUMBER	QTY	NOTES	KIT P/N	KIT DESCRIPTION	PERFORMANCE	PIN CLAMP P/N	HSG ASSY P/N	HSG COLOR
1	BOOT, ROUND, SHORT, MTP®, 3.0 mm CABLE	16457	1		18526	KIT, MTP® PRO, FEMALE, MM MTP Elite®, 3.0 RND, SHORT BOOT, AQUA	MM MTP Elite®	17861	18189	AQUA
2	CRIMP BAND, 3.0 ROUND, MTP®	15633	1		18527	KIT, MTP® PRO, MALE, MM MTP Elite®, 3.0 RND, SHORT BOOT, AQUA	MM MTP Elite®	19038	18189	AQUA
3	SPRING PUSH, UNIV., 3.0mm RND	19692	1		18528	KIT, MTP® PRO, FEMALE, MM MTP Elite®, 3.0 RND, SHORT BOOT, HEATHER VIOLET	MM MTP Elite®	17861	18191	HEATHER VIOLET
4	SPRING, UNIVERSAL, 9.8N, MTP®	17167	1		18529	KIT, MTP® PRO, MALE, MM MTP Elite®, 3.0 RND, SHORT BOOT, HEATHER VIOLET	MM MTP Elite®	19038	18191	HEATHER VIOLET
5	PIN CLAMP, MTP® PRO	SEE KIT TABLE COLUMN A	1	NOTE 1	18530	KIT, MTP® PRO, FEMALE, SM MTP Elite®, 3.0 RND, SHORT BOOT, GREEN	SM MTP Elite®	17861	18190	GREEN
6	HOUSING ASSY, MTP® PRO	SEE KIT TABLE COLUMN B	1		18531	KIT, MTP® PRO, MALE, SM MTP Elite®, 3.0 RND, SHORT BOOT, GREEN	SM MTP Elite®	19039	18190	GREEN
7	DUST CAP, MTP®	17242	1		19522	KIT, MTP® PRO, FEMALE, MM MTP Elite®, 3.0 RND, SHORT BOOT, LIME	MM MTP Elite®	17861	19486	LIME
					19523	KIT, MTP® PRO, MALE, MM MTP Elite®, 3.0 RND, SHORT BOOT, LIME	MM MTP Elite®	19038	19486	LIME

NOTES:

1. MALE CONNECTOR KIT HAS MALE PIN CLAMP ASSEMBLY, FEMALE CONNECTOR KIT HAS FEMALE PIN CLAMP ASSEMBLY.

FERRULE / BOOT KIT SHOWN FOR REFERENCE ONLY, MUST BE PURCHASED SEPARATELY



USCONEC LTD. PROPRIETARY  
THIS DOCUMENT AND THE ASSOCIATED DATA CONTAIN RESTRICTED INFORMATION THAT IS USCONEC LTD. PROPERTY. DISCLOSE OR DUPLICATE FOR OTHERS ONLY AS AUTHORIZED BY USCONEC LTD.

**Material:**

REV	DATE	DESCRIPTION	ECN
X1	11/2/18	---	2089-mm
X2	2/4/19	TABLE CORRECTION: REMOVED SPRING P/N COLUMN	2200-mm
A	3/11/19	INITIAL RELEASE	
B1	7/25/19	SPRING PUSH 19692 was 17428	2231-mm
B	10/25/19	RELEASE	

**CUSTOMER DRAWING**

DIMENSIONS FOR REFERENCE ONLY

THIRD ANGLE PROJECTION

**METRIC/mm**

▲ DENOTES CRITICAL DIMENSION

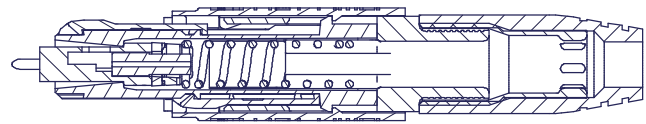
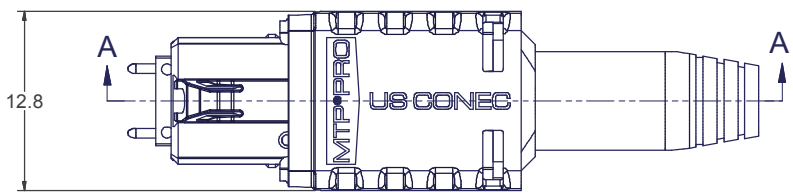
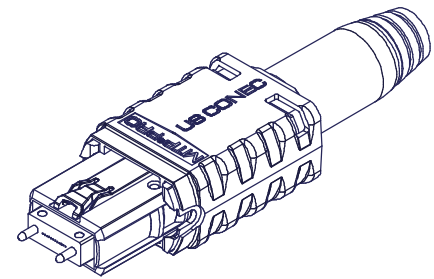
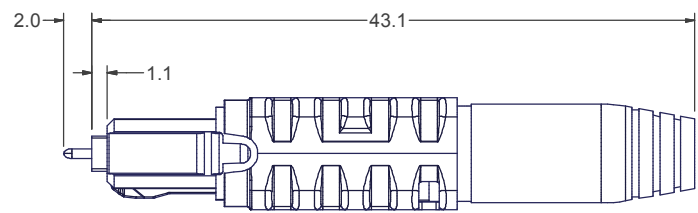
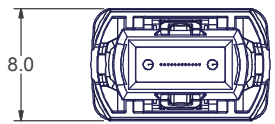
**USCONEC**  
Hickory, NC  
800-769-0944  
www.usconec.com

TITLE  
**KIT, MTP® PRO CONNECTOR, 2.8 - 3.2 mm RND, SHORT BOOT**

SIZE	S&M Part No.:	DWG NO.	REV
<b>B</b>	SEE TABLE	<b>C18526</b>	<b>B</b>
SCALE	Drafter	Date:	
N.T.S.	M.McCROSKEY	11/2/2018	

SHEET 1 OF 2

4 | 3 | 2 | 1



SECTION A-A

B

B

A

A

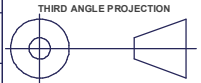
USCONEC LTD. PROPRIETARY  
 THIS DOCUMENT AND THE ASSOCIATED DATA CONTAIN RESTRICTED  
 INFORMATION THAT IS USCONEC LTD. PROPERTY. DISCLOSE OR DUPLICATE FOR  
 OTHERS ONLY AS AUTHORIZED BY USCONEC LTD.

Material:

REV	DATE	DESCRIPTION	ECN
		SEE SHEET 1	

CUSTOMER  
DRAWING

DIMENSIONS FOR REFERENCE  
ONLY



METRIC/mm



Hickory, NC  
 800-769-0944  
[www.usconec.com](http://www.usconec.com)

TITLE  
**KIT, MTP® PRO CONNECTOR,  
 2.8 - 3.2 mm RND, SHORT BOOT**

SIZE	S&M Part No.:	DWG NO.	REV
<b>B</b>	SEE SHEET 1	<b>C18526</b>	<b>B</b>
SCALE	Drafter	Date:	SHEET
N.T.S.	M.McCROSKEY	11/2/2018	2 OF 2

▲ DENOTES CRITICAL DIMENSION

4 | 3 | 2 | 1