

NOTES:

1. $X_i = (2i - n - 1) \times 0.125$, WHERE i CORRESPONDS TO THE i TH FIBER PER THE NUMBERING CONVENTION, AND n IS THE TOTAL NUMBER OF FIBERS IN THE ARRAY
2. NOMINAL TRUE POSITION OF FIBER-HOLE CENTERS IS SHIFTED IN THE 'Y' DIRECTION (TOWARD THE NON-WINDOW SIDE) TO ACCOUNT FOR FERRULE TRANSLATION DUE TO THE 8° ANGLE - OPTIMIZED FOR 20N.
3. MATERIAL: POLYPHENYLENE SULFIDE RESIN, MAT'L SPEC #C7718
4. GUIDE PINS SHOULD HAVE A DIAMETER RANGING FROM 0.548 TO 0.549 TO MINIMIZE INSERTION LOSS

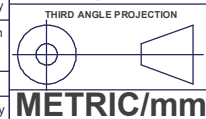
USCONEC LTD. PROPRIETARY
THIS DOCUMENT AND THE ASSOCIATED DATA CONTAIN RESTRICTED INFORMATION THAT IS USCONEC LTD. PROPERTY. DISCLOSE OR DUPLICATE FOR OTHERS ONLY AS AUTHORIZED BY USCONEC LTD.

Material: SEE NOTES

REV	DATE	DESCRIPTION	ECN
X1	3/1/17	--	2038-my
X2	6/30/17	Ø0.1255-0.1265 WAS Ø0.1255-0.1270, ADDED TP TOLERANCE Ø0.0026	2038-bh
A	8/11/17	INITIAL RELEASE	2038-rr
B	2/13/20	REVISED GATE VESTIGE CALLOUT	2247-my

CUSTOMER DRAWING

DIMENSIONS FOR REFERENCE ONLY



Hickory, NC
800-769-0944
www.usconec.com

TITLE
FERRULE, 1X16, PPS,
SM, PRE-ANGLED

SIZE	S&M Part No.: 18431	DWG NO.	C18431	REV	B
SCALE	N.T.S.	Drafter	M. YOUNT	Date:	3/1/2017
			SHEET	1	OF 1

▲ DENOTES CRITICAL DIMENSION

SECTION A-A