

NOTES:

1. $X_i = (2i - n - 1) \times 0.125$, WHERE i CORRESPONDS TO THE i 'th FIBER PER THE NUMBERING CONVENTION, AND n IS THE TOTAL NUMBER OF FIBERS IN THE ARRAY
2. MATERIAL: POLYPHENYLENE SULFIDE RESIN, MAT'L SPEC #C7438
3. GUIDE PINS SHOULD HAVE A DIAMETER RANGING FROM 0.5470 TO 0.5490 TO MINIMIZE INSERTION LOSS

USCONEC LTD. PROPRIETARY
THIS DOCUMENT AND THE ASSOCIATED DATA CONTAIN RESTRICTED INFORMATION THAT IS USCONEC LTD. PROPERTY. DISCLOSE OR DUPLICATE FOR OTHERS ONLY AS AUTHORIZED BY USCONEC LTD.

Material: SEE NOTES

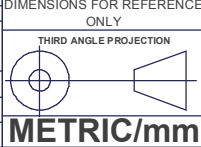
REV	DATE	DESCRIPTION	ECN
X1	9/13/16	-	1986-mm
A	12/5/16	INITIAL RELEASE	
B	3/6/18	GP DIA CORRECTION: 0.549 WAS 0.550	1986-rr

CUSTOMER DRAWING

▲ DENOTES CRITICAL DIMENSION

USCONEC Hickory, NC
800-769-0944
www.usconec.com

TITLE
FERRULE, 16F, PPS, MM



SIZE	S&M Part No.:	DWG NO.	REV
B	18209	C18209	B
SCALE	Drafter	Date:	SHEET
N.T.S.	M.McCROSKEY	9/13/2016	1 OF 1