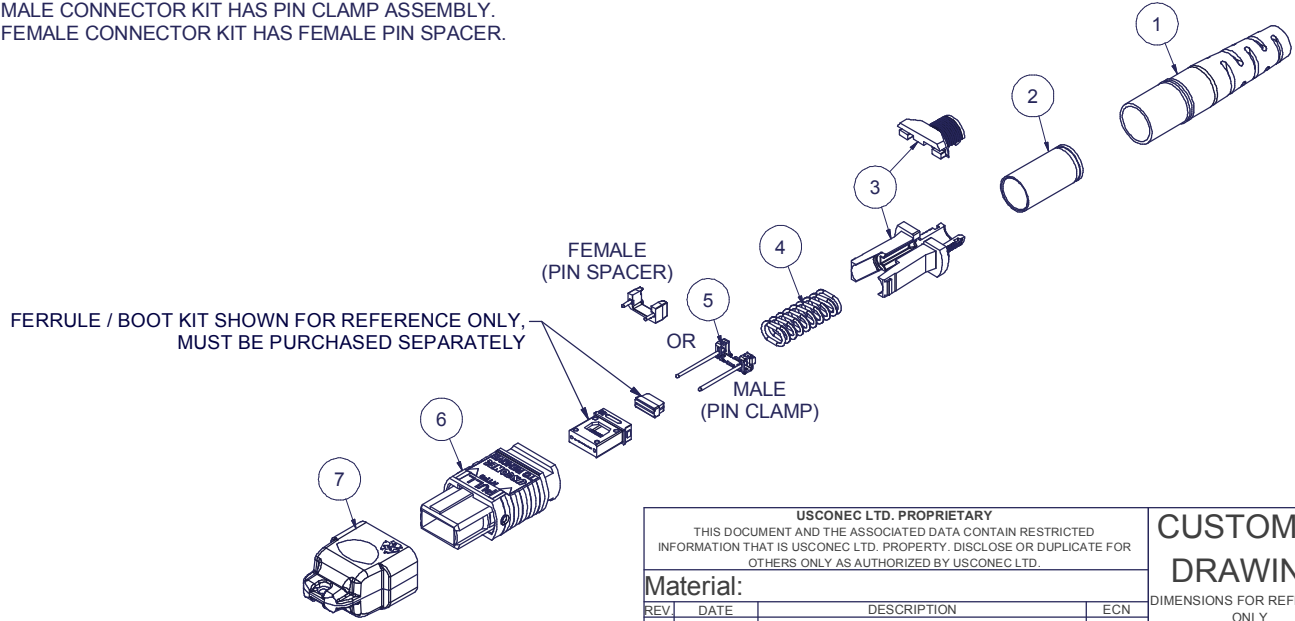


4					3			2		1		
Parts List					KIT P/N	KIT DESCRIPTION	PERFORMANCE	COLUMN A		COLUMN B		
ITEM	DESCRIPTION	PART NUMBER	QTY	NOTES				PIN CLAMP/SPACER P/N	HSG ASSY P/N	HSG ASSY COLOR		
1	BOOT, ROUND, 4.5 mm CABLE	13168	1		17787	KIT, MTP-16™, FEMALE, MM, 4.0 RND, AQUA	MM or MM MTP Elite®	15391	16819	AQUA		
2	CRIMP BAND, 4.0, ROUND, MTP® & MXC®	16543	1		17788	KIT, MTP-16™, MALE, MM MTP Elite®, 4.0 RND, AQUA	MM MTP Elite®	15609	16819	AQUA		
3	SPRING PUSH, UNIVERSAL, 2 PC, 4.0 - 5.5mm RND, MTP®	19740	1		17789	KIT, MTP-16™, FEMALE, MM, 4.0 RND, MAGENTA	MM or MM MTP Elite®	15391	16822	MAGENTA		
4	SPRING, UNIVERSAL, 20N	17698	1		17790	KIT, MTP-16™, MALE, MM MTP Elite®, 4.0 RND, MAGENTA	MM MTP Elite®	15609	16822	MAGENTA		
5	PIN CLAMP or PIN SPACER, MTP-16™	SEE KIT TABLE COLUMN A	1	NOTE 1	18032	KIT, MTP-16™, MALE, MM, 4.0 RND, AQUA	MM	17782	16819	AQUA		
6	ASSEMBLY, HOUSING, MTP-16™	SEE KIT TABLE COLUMN B	1		18033	KIT, MTP-16™, MALE, MM, 4.0 RND, MAGENTA	MM	17782	16822	MAGENTA		
7	DUST CAP, MTP®	17242	1		19239	KIT, MTP-16™, FEMALE, MM, 4.0 RND, LIME	MM or MM MTP Elite®	15391	19103	LIME		
					19240	KIT, MTP-16™, MALE, MM, 4.0 RND, LIME	MM	17782	19103	LIME		
					19241	KIT, MTP-16™, MALE, MM MTP Elite®, 4.0 RND, LIME	MM MTP Elite®	15609	19103	LIME		
					19405	KIT, MTP-16™, FEMALE, SM, 4.0 RND, GREEN	SM	15391	19068	GREEN		
					19406	KIT, MTP-16™, MALE, SM, 4.0 RND, GREEN	SM	15609	19068	GREEN		

NOTES:  
 1. MALE CONNECTOR KIT HAS PIN CLAMP ASSEMBLY.  
 FEMALE CONNECTOR KIT HAS FEMALE PIN SPACER.



USCONEC LTD. PROPRIETARY  
 THIS DOCUMENT AND THE ASSOCIATED DATA CONTAIN RESTRICTED INFORMATION THAT IS USCONEC LTD. PROPERTY. DISCLOSE OR DUPLICATE FOR OTHERS ONLY AS AUTHORIZED BY USCONEC LTD.

**Material:**

REV	DATE	DESCRIPTION	ECN
B1	10/3/17	ADD'D KIT P/Ns TO TABLE: 19239, 19240, 19241, 19405 & 19406	2084-mm
B	10/23/17	RELEASE	
C1	3/26/18	17242 (DUST CAP) was 17158 (PROTECTIVE CAP)	2130-mm
C	4/23/18	RELEASE	
D1	7/23/19	SPRING PUSH 19740 was 17681; REVISED PARTS LIST FORMAT	2159-mm
D	1/6/20	RELEASE	2237-mm

▲ DENOTES CRITICAL DIMENSION

**CUSTOMER DRAWING**

**USCONEC** Hickory, NC  
800-769-0944  
www.usconec.com

TITLE  
**KIT, MTP-16™ CONNECTOR, 3.8 - 4.2mm ROUND CABLE**

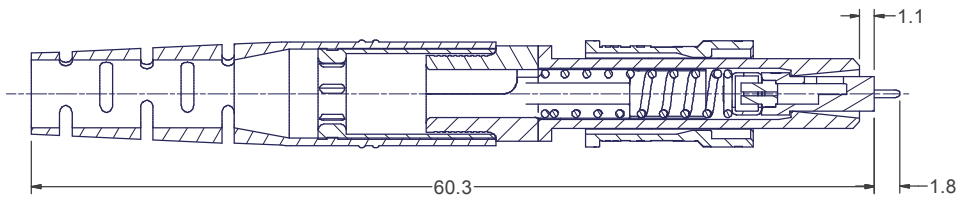
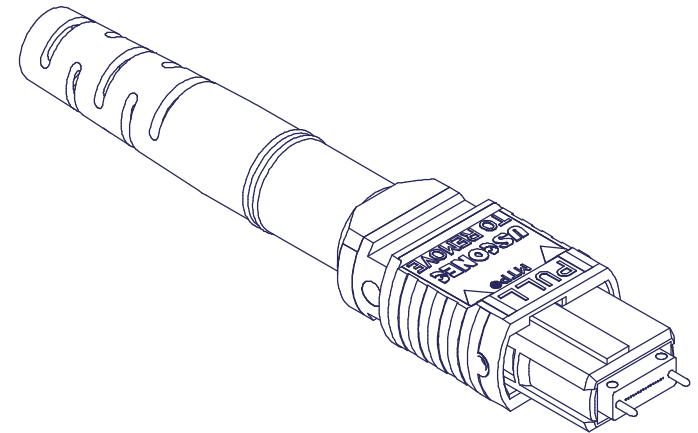
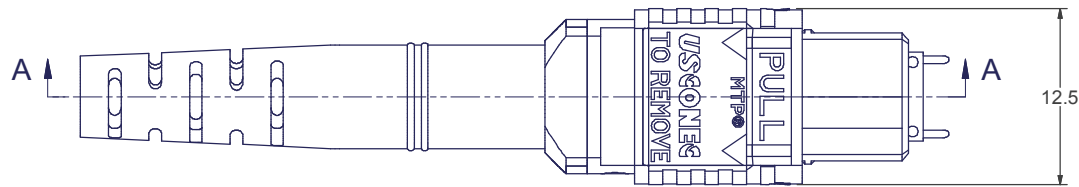
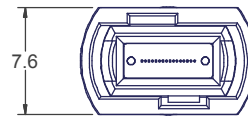
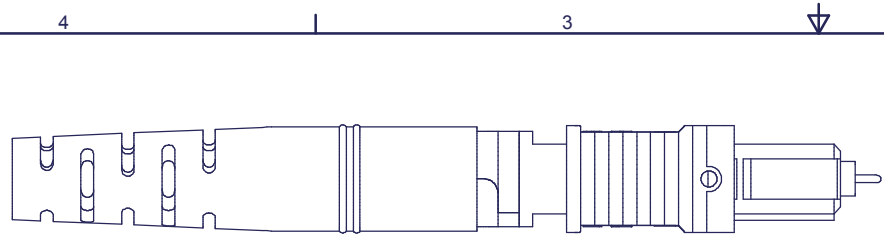
SIZE S&M Part No.:  
**B SEE TABLE**

DWG NO. **C17787** REV D

SCALE N.T.S. Drafter M.McCROSKEY Date 5/16/2016 SHEET 1 OF 2

METRIC/mm

THIRD ANGLE PROJECTION



SECTION A-A

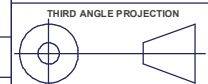
USCONEC LTD. PROPRIETARY  
 THIS DOCUMENT AND THE ASSOCIATED DATA CONTAIN RESTRICTED INFORMATION THAT IS USCONEC LTD. PROPERTY. DISCLOSE OR DUPLICATE FOR OTHERS ONLY AS AUTHORIZED BY USCONEC LTD.

Material:

REV	DATE	DESCRIPTION	ECN

**CUSTOMER DRAWING**

DIMENSIONS FOR REFERENCE ONLY



**METRIC/mm**



Hickory, NC  
 800-769-0944  
[www.usconec.com](http://www.usconec.com)

TITLE  
**KIT, MTP-16™ CONNECTOR,  
 3.8 - 4.2mm ROUND CABLE**

SIZE	S&M Part No.:	DWG NO.	REV
<b>B</b>	SEE SHEET 1	<b>C17787</b>	<b>D</b>
SCALE	Drafter	Date:	SHEET
N.T.S.	M.McCROSKEY	5/16/2016	2 OF 2

▲ DENOTES CRITICAL DIMENSION