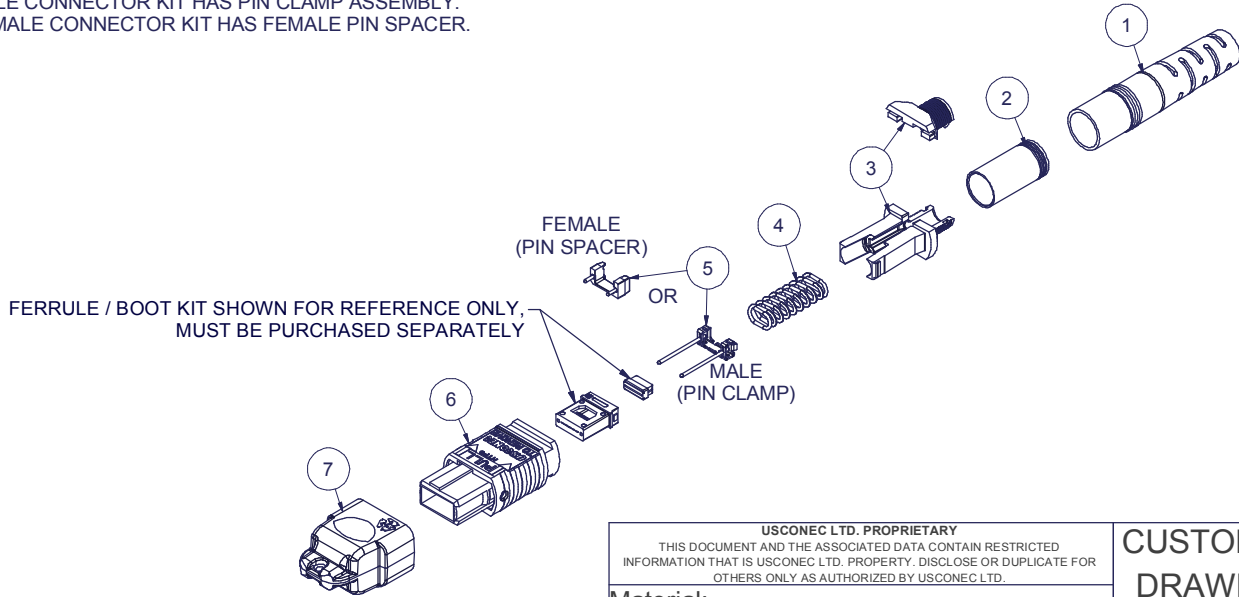


Parts List				
ITEM	DESCRIPTION	PART NUMBER	QTY	NOTES
1	BOOT, ROUND, 5.0/5.5 CABLE	12978	1	
2	CRIMP BAND, 5.0, ROUND, MTP®	16428	1	
3	SPRING PUSH, UNIVERSAL, 2 PC, 4.0 - 5.5mm RND, MTP®	19740	1	
4	SPRING, UNIVERSAL, 20N	17698	1	
5	PIN CLAMP or PIN SPACER	SEE KIT TABLE COLUMN A	1	NOTE 1
6	ASSEMBLY, HOUSING, MTP-16™	SEE KIT TABLE COLUMN B	1	
7	DUST CAP, MTP®	17242	1	

KIT P/N	KIT DESCRIPTION	PERFORMANCE	COLUMN A		COLUMN B
			PIN CLAMP/SPACER P/N	HSG ASSY P/N	HSG ASSY COLOR
17688	KIT, MTP-16™, FEMALE, MM, 5.0 RND, AQUA	MM or MM MTP Elite®	15391	16819	AQUA
17689	KIT, MTP-16™, MALE, MM MTP Elite®, 5.0 RND, AQUA	MM MTP Elite®	15609	16819	AQUA
17690	KIT, MTP-16™, FEMALE, MM, 5.0 RND, MAGENTA	MM or MM MTP Elite®	15391	16822	MAGENTA
17691	KIT, MTP-16™, MALE, MM MTP Elite®, 5.0 RND, MAGENTA	MM MTP Elite®	15609	16822	MAGENTA
18036	KIT, MTP-16™, MALE, MM, 5.0 RND, AQUA	MM	17782	16819	AQUA
18037	KIT, MTP-16™, MALE, MM, 5.0 RND, MAGENTA	MM	17782	16822	MAGENTA
19245	KIT, MTP-16™, FEMALE, MM, 5.0 RND, LIME	MM or MM MTP Elite®	15391	19103	LIME
19246	KIT, MTP-16™, MALE, MM, 5.0 RND, LIME	MM	17782	19103	LIME
19247	KIT, MTP-16™, MALE, MM MTP Elite®, 5.0 RND, LIME	MM MTP Elite®	15609	19103	LIME
19409	KIT, MTP-16™, FEMALE, SM, 5.0 RND, GREEN	SM	15391	19068	GREEN
19410	KIT, MTP-16™, MALE, SM, 5.0 RND, GREEN	SM	15609	19068	GREEN

NOTES:

1. MALE CONNECTOR KIT HAS PIN CLAMP ASSEMBLY.
FEMALE CONNECTOR KIT HAS FEMALE PIN SPACER.



FERRULE / BOOT KIT SHOWN FOR REFERENCE ONLY, MUST BE PURCHASED SEPARATELY

USCONEC LTD. PROPRIETARY
THIS DOCUMENT AND THE ASSOCIATED DATA CONTAIN RESTRICTED INFORMATION THAT IS USCONEC LTD. PROPERTY. DISCLOSE OR DUPLICATE FOR OTHERS ONLY AS AUTHORIZED BY USCONEC LTD.

Material:

REV	DATE	DESCRIPTION	ECN
C1	10/3/17	ADD'D KIT PIN'S TO TABLE: 19245, 19246, 19247, 19409 & 19410	2084-mm
C	10/23/17	RELEASE	
D1	3/26/18	17242 (DUST CAP) was 17158 (PROTECTIVE CAP)	2130-mm
D	4/23/18	RELEASE	
E1	7/23/19	SPRING PUSH 19740 was 17681; REVISED PARTS LIST FORMAT	2159-mm
E	1/6/20	RELEASE	2237-mm

CUSTOMER DRAWING

DIMENSIONS FOR REFERENCE ONLY

THIRD ANGLE PROJECTION

METRIC/mm

▲ DENOTES CRITICAL DIMENSION

USCONEC Hickory, NC
800-769-0944
www.usconec.com

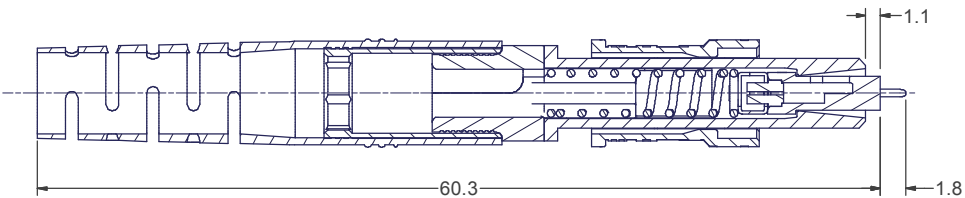
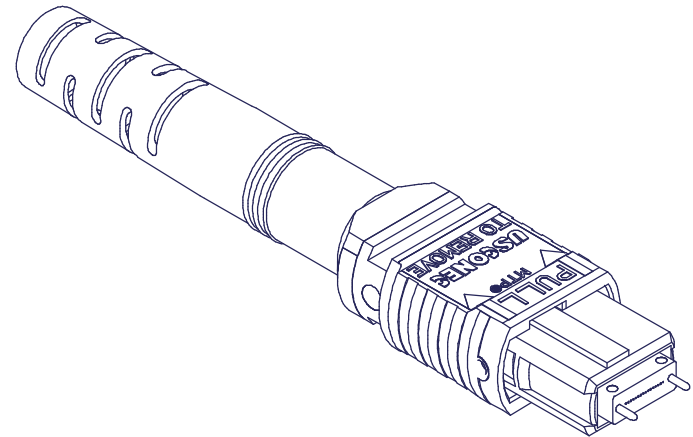
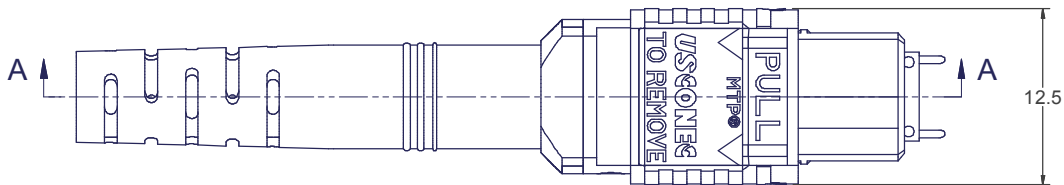
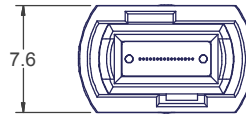
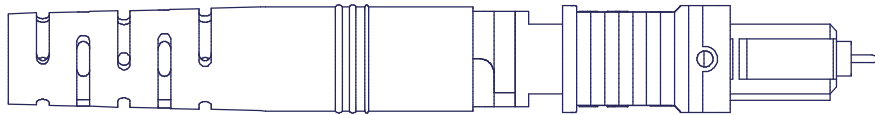
TITLE
KIT, MTP-16™ CONNECTOR,
4.8 - 5.2mm ROUND CABLE

SIZE S&M Part No.:
B SEE TABLE

DWG NO. **C17688** REV **E**

SCALE N.T.S. Drafter M.McCROSKEY Date 3/24/2016 SHEET 1 OF 2

4 | 3 | 2 | 1



SECTION A-A

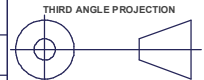
USCONEC LTD. PROPRIETARY
THIS DOCUMENT AND THE ASSOCIATED DATA CONTAIN RESTRICTED INFORMATION THAT IS USCONEC LTD. PROPERTY. DISCLOSE OR DUPLICATE FOR OTHERS ONLY AS AUTHORIZED BY USCONEC LTD.

Material:

REV	DATE	DESCRIPTION	ECN

CUSTOMER DRAWING

DIMENSIONS FOR REFERENCE ONLY



METRIC/mm



Hickory, NC
800-769-0944
www.usconec.com

TITLE
KIT, MTP-16™ CONNECTOR,
4.8 - 5.2mm ROUND CABLE

SIZE	S&M Part No.:	DWG NO.	REV
B	SEE SHEET 1	C17688	E
SCALE	Drafter	Date:	SHEET
N.T.S.	M.McCROSKEY	3/24/2016	2 OF 2

▲ DENOTES CRITICAL DIMENSION

4 | 3 | 2 | 1