

NOTES:

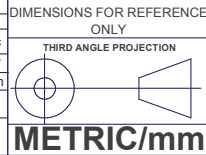
- $X_i = (2i - n - 1) \times 0.125$, WHERE i CORRESPONDS TO THE i 'TH FIBER PER THE NUMBERING CONVENTION, AND n IS THE TOTAL NUMBER OF FIBERS IN THE ARRAY (12 FIBERS TOTAL IN THE CASE OF THIS 4+4 FERRULE).
- MATERIAL: POLYPHENYLENE SULFIDE RESIN, MAT'L SPEC #C7438
- GUIDE PINS SHOULD HAVE A DIAMETER RANGING FROM 0.6980 TO 0.6990 TO MINIMIZE INSERTION LOSS

USCONEC LTD. PROPRIETARY
THIS DOCUMENT AND THE ASSOCIATED DATA CONTAIN RESTRICTED INFORMATION THAT IS USCONEC LTD. PROPERTY. DISCLOSE OR DUPLICATE FOR OTHERS ONLY AS AUTHORIZED BY USCONEC LTD.

Material: SEE NOTES

| REV | DATE | DESCRIPTION | ECN |
|-----|----------|---|---------|
| X1 | 7/23/15 | - | 1745-mc |
| X2 | 2/11/16 | ADDED NOTES; ADDED FEATURES | 1745-my |
| A | 3/22/16 | INITIAL RELEASE | 1745-mm |
| B1 | 9/27/17 | DEL'D FIBER HOLE TRUE POS. SPEC & GP HOLE PARALLEL SPEC | 2048-rr |
| B | 10/20/17 | RELEASE | 2048-rr |
| | 11/6/17 | ADDED 'W/DIMPLES' TO TITLE | |

CUSTOMER DRAWING



▲ DENOTES CRITICAL DIMENSION

USCONEC
Hickory, NC
800-769-0944
www.usconec.com

TITLE
**FERRULE, 4+4, PPS,
MM MT Elite®, W/DIMPLES**

| | | | |
|----------|---------------|---------------|----------|
| SIZE | S&M Part No.: | DWG NO. | REV |
| B | 16519 | C16519 | B |
| SCALE | Drafter | Date: | SHEET |
| N.T.S. | M. CLOUD | 7/23/2015 | 1 OF 1 |