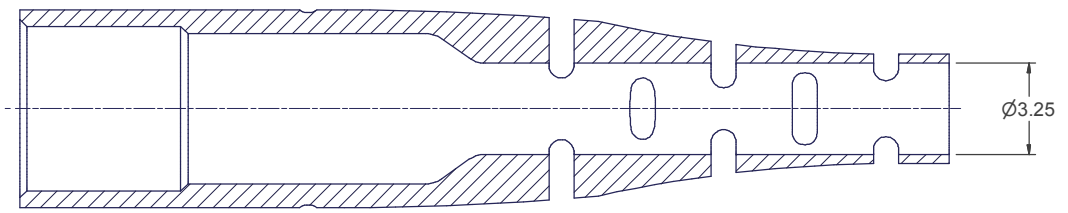
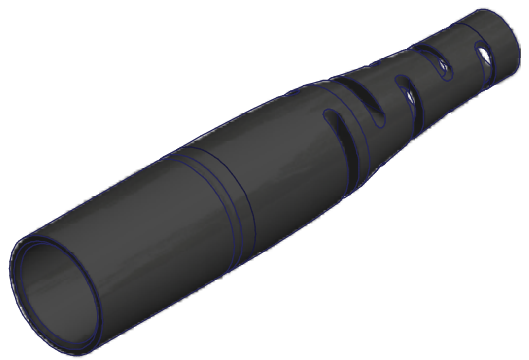
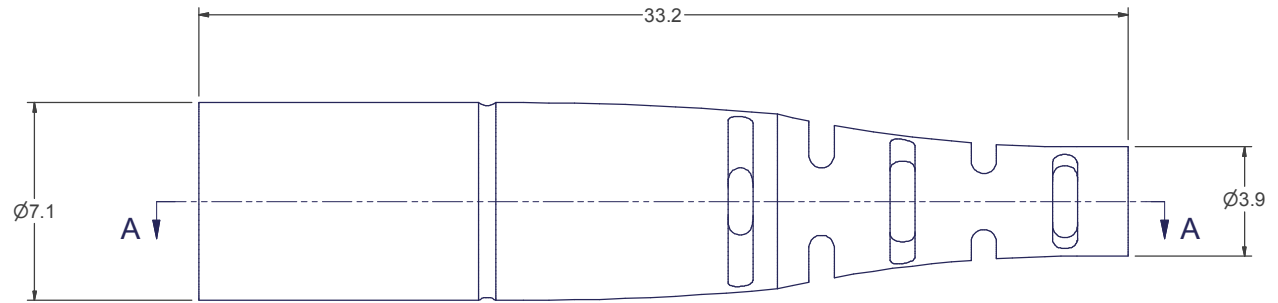
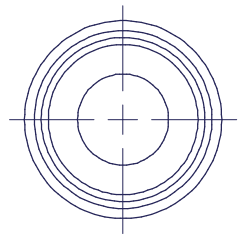


8 7 6 5 4 3 2 1



SECTION A-A



▲ DENOTES CRITICAL DIMENSION

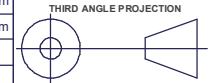
USCONEC LTD. PROPRIETARY
 THIS DOCUMENT AND THE ASSOCIATED DATA CONTAIN RESTRICTED
 INFORMATION THAT IS USCONEC LTD. PROPERTY. DISCLOSE OR DUPLICATE FOR
 OTHERS ONLY AS AUTHORIZED BY USCONEC LTD.

Material: TPE - MATERIAL SPEC #C13710, BLACK

REV	DATE	DESCRIPTION	ECN
X1	2/5/15	---	1689-mm
A	9/1/15	INITIAL RELEASE	1812-mm

CUSTOMER
DRAWING

DIMENSIONS FOR REFERENCE
ONLY



METRIC/mm



Hickory, NC
800-769-0944
www.usconec.com

TITLE
**BOOT, 3.0 ROUND CABLE /
3.6 CRIMP DIE, MXC®**

SIZE	S&M Part No.:	DWG NO.	REV
B	16377	C16377	A
SCALE	Drafter	Date:	SHEET
N.T.S.	M.McCROSKEY	2/5/2015	1 OF 1

8 7 6 5 4 3 2 1