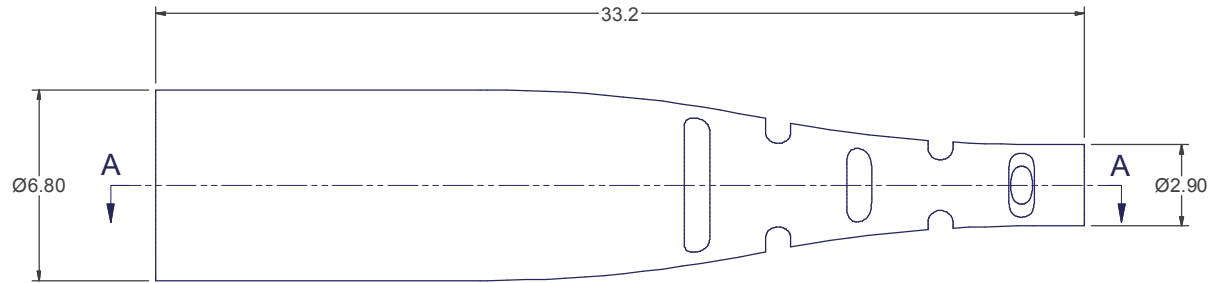
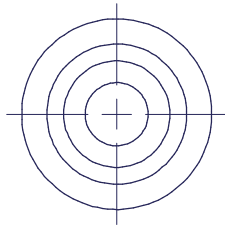


SECTION A-A



PART NO.	COLOR
14922	BLACK
15893	AQUA
15894	GREEN
16570	SLATE
17085	RED
17153	LT GRAY
16689	MAGENTA
17326	MUSTARD
18026	HEATHER VIOLET
18027	MUNSELL VIOLET
19024	YELLOW
18021	BLUE

USCONEC LTD. PROPRIETARY			
THIS DOCUMENT AND THE ASSOCIATED DATA CONTAIN RESTRICTED INFORMATION THAT IS USCONEC LTD. PROPERTY. DISCLOSE OR DUPLICATE FOR OTHERS ONLY AS AUTHORIZED BY USCONEC LTD.			
REV	DATE	DESCRIPTION	ECN
H	1/4/17	ADD'D P/Ns 18026 (HEATHER VIOLET) & 18027 (MUNSELL VIOLET) TO TABLE RELEASE	2005-mm
J1	6/1/17	DEL'D TANGENT EDGES OF RADII FOR CLARITY... NO PART CHG ADD'D YELLOW P/N 19024 & BLUE P/N 18021 TO TABLE. P/N 17326 COLOR DESC: MUSTARD was YELLOW; P/N 16570 COLOR DESC: SLATE was DARK GRAY	2070-mm
J	9/14/17	RELEASE	

CUSTOMER DRAWING

DIMENSIONS FOR REFERENCE ONLY

THIRD ANGLE PROJECTION

METRIC/mm

USCONEC Hickory, NC
800-769-0944
www.usconec.com

TITLE
BOOT, 2.0 mm ROUND
CABLE, MTP®

SIZE: S&M Part No.: SEE TABLE
SCALE: N.T.S. Drafter: G. WOLF
DWG NO: **C14922** Date: 10/9/2012
REV: J SHEET 1 OF 1

▲ DENOTES CRITICAL DIMENSION