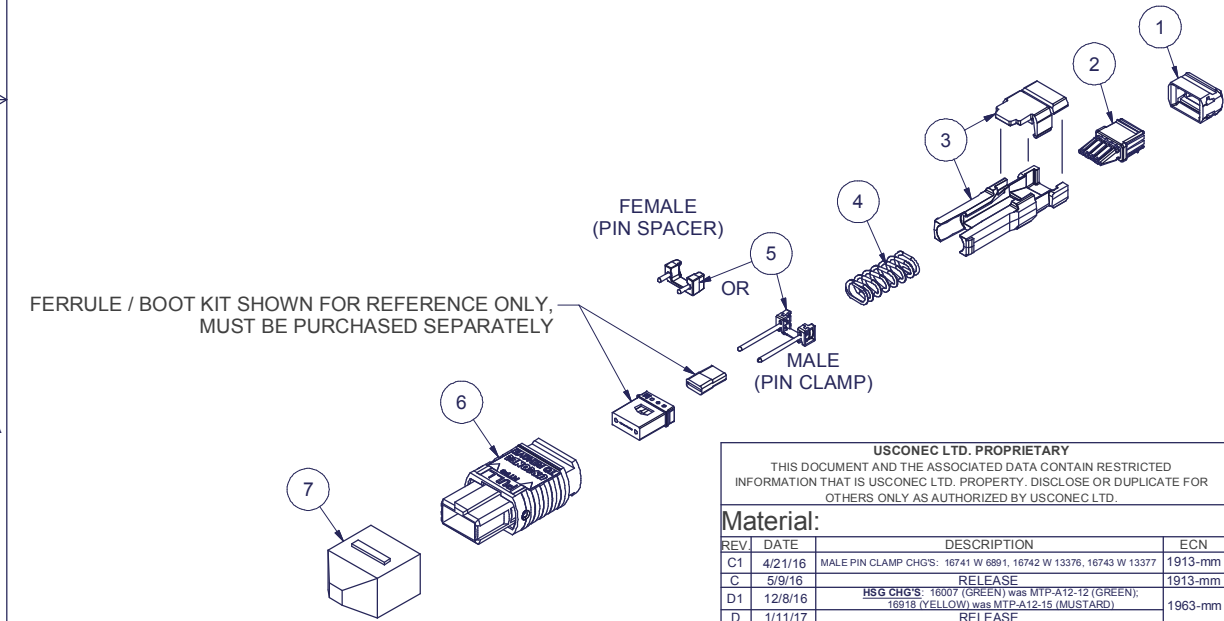


Parts List				
ITEM	DESCRIPTION	PART NUMBER	QTY	NOTES
1	LOCK, 900µm	14872	1	-
2	TRANSITION, 900µm	14869	1	-
3	SPRING PUSH, 900µm, MTP®, 2PC	15706	1	-
4	SPRING	14511	1	-
5	PIN CLAMP or PIN SPACER	SEE KIT TABLE COLUMN A	1	NOTE 1
6	HOUSING ASSY	SEE KIT TABLE COLUMN B	1	-
7	PROTECTIVE CAP	MTP-012-01	1	-

NOTES:
 1. MALE CONNECTOR KIT HAS PIN CLAMP ASSEMBLY.
 FEMALE CONNECTOR KIT HAS FEMALE PIN SPACER.

KIT P/N	KIT DESCRIPTION	PERFORMANCE	COLUMN A		COLUMN B
			PIN CLAMP/SPACER PN	HSG ASSY PN	HSG ASSY COLOR
14873	KIT, 900µm to MTP®, MALE, MM, BEIGE	MM	16741	MTP-A12-11	BEIGE
15313	KIT, 900µm to MTP®, MALE, SM, GREEN	SM	16742	16007	GREEN
15314	KIT, 900µm to MTP®, MALE, SM MTP Elite®, YELLOW	SM MTP Elite®	16743	16918	YELLOW
15315	KIT, 900µm to MTP®, FEMALE, MM, BEIGE	MM	12918	MTP-A12-11	BEIGE
15316	KIT, 900µm to MTP®, FEMALE, SM, GREEN	SM or SM MTP Elite®	12918	16007	GREEN
15317	KIT, 900µm to MTP®, FEMALE, SM MTP Elite®, YELLOW	SM MTP Elite®	12918	16918	YELLOW
15318	KIT, 900µm to MTP®, MALE, MM, BLACK	MM	16741	MTP-A12-02	BLACK
15319	KIT, 900µm to MTP®, FEMALE, MM, BLACK	MM	12918	MTP-A12-02	BLACK
15320	KIT, 900µm to MTP®, MALE, MM, AQUA	MM	16741	7871	AQUA
15321	KIT, 900µm to MTP®, FEMALE, MM, AQUA	MM or MM MTP Elite®	12918	7871	AQUA
15322	KIT, 900µm to MTP®, MALE, MM MTP Elite®, AQUA	MM MTP Elite®	16742	7871	AQUA
17060	KIT, 900µm to MTP®, FEMALE, MM, MAGENTA	MM or MM MTP Elite®	12918	13949	MAGENTA
17061	KIT, 900µm to MTP®, MALE, MM MTP Elite®, MAGENTA	MM MTP Elite®	16742	13949	MAGENTA
19218	KIT, 900µm to MTP®, FEMALE, MM, LIME	MM or MM MTP Elite®	15391	19103	LIME
19219	KIT, 900µm to MTP®, MALE, MM, LIME	MM	17782	19103	LIME
19220	KIT, 900µm to MTP®, MALE, MM MTP Elite®, LIME	MM MTP Elite®	15609	19103	LIME

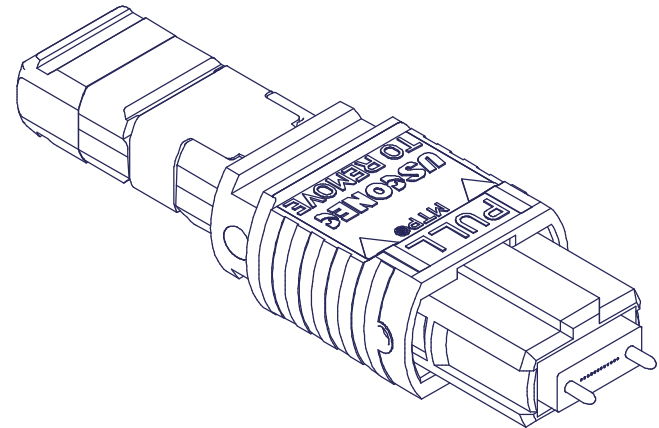
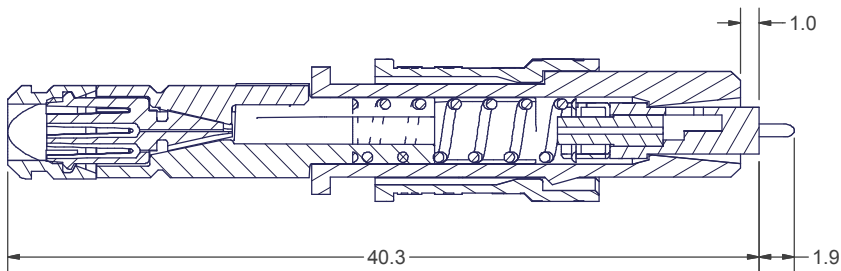
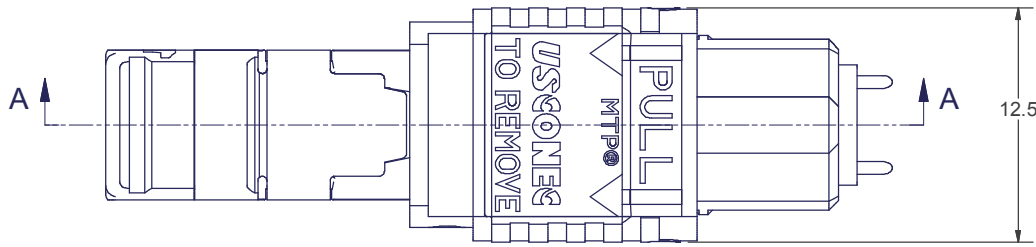
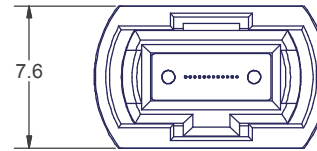
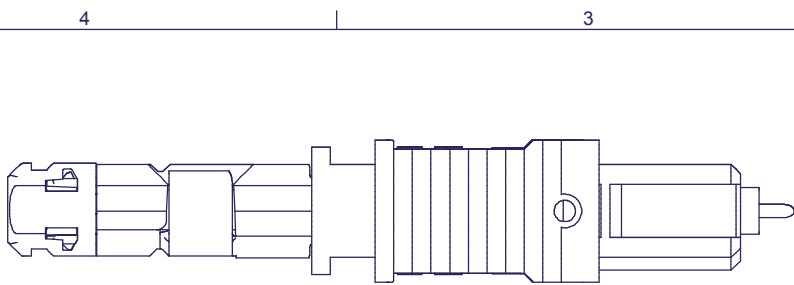


FERRULE / BOOT KIT SHOWN FOR REFERENCE ONLY, MUST BE PURCHASED SEPARATELY

USCONEC LTD. PROPRIETARY THIS DOCUMENT AND THE ASSOCIATED DATA CONTAIN RESTRICTED INFORMATION THAT IS USCONEC LTD. PROPERTY. DISCLOSE OR DUPLICATE FOR OTHERS ONLY AS AUTHORIZED BY USCONEC LTD.			
Material:			
REV	DATE	DESCRIPTION	ECN
C1	4/21/16	MALE PIN CLAMP CHGS. 16741 W 6891, 16742 W 13376, 16743 W 13377	1913-mm
C	5/9/16	RELEASE	1913-mm
D1	12/8/16	HSG CHG'S: 16007 (GREEN) was MTP-A12-12 (GREEN); 16918 (YELLOW) was MTP-A12-15 (MUSTARD)	1963-mm
D	1/11/17	RELEASE	
E1	10/3/17	ADD'D KIT P/Ns TO TABLE: 19218, 19219, 19220; REVISED DESCRIPTIONS IN TABLE	2084-mm
E	10/31/17	RELEASE	
F	3/20/18	CORRECTED ITEM# 3, 2 & 1 ORIENTATION	2086-mm

CUSTOMER DRAWING DIMENSIONS FOR REFERENCE ONLY THIRD ANGLE PROJECTION 		Hickory, NC 800-769-0944 www.usconec.com	
		TITLE KIT, 900µm to MTP® CONNECTOR	
SIZE S&M Part No.: B SEE TABLE	DWG NO. C14873	REV F	SCALE N.T.S. Drafter G. WOLF Date: 4/19/2013 SHEET 1 OF 2

▲ DENOTES CRITICAL DIMENSION



SECTION A-A

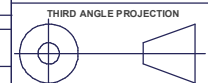
USCONEC LTD. PROPRIETARY
THIS DOCUMENT AND THE ASSOCIATED DATA CONTAIN RESTRICTED INFORMATION THAT IS USCONEC LTD. PROPERTY. DISCLOSE OR DUPLICATE FOR OTHERS ONLY AS AUTHORIZED BY USCONEC LTD.

Material: N/A

REV	DATE	DESCRIPTION	ECN
		SEE SHEET 1	

CUSTOMER DRAWING

DIMENSIONS FOR REFERENCE ONLY



METRIC/mm



Hickory, NC
800-769-0944
www.usconec.com

TITLE
KIT, 900µm to MTP®
CONNECTOR

SIZE B	S&M Part No.: SEE SHEET 1	DWG NO. C14873	REV F
SCALE N.T.S.	Drafter G. WOLF	Date: 4/19/2013	SHEET 2 OF 2

▲ DENOTES CRITICAL DIMENSION