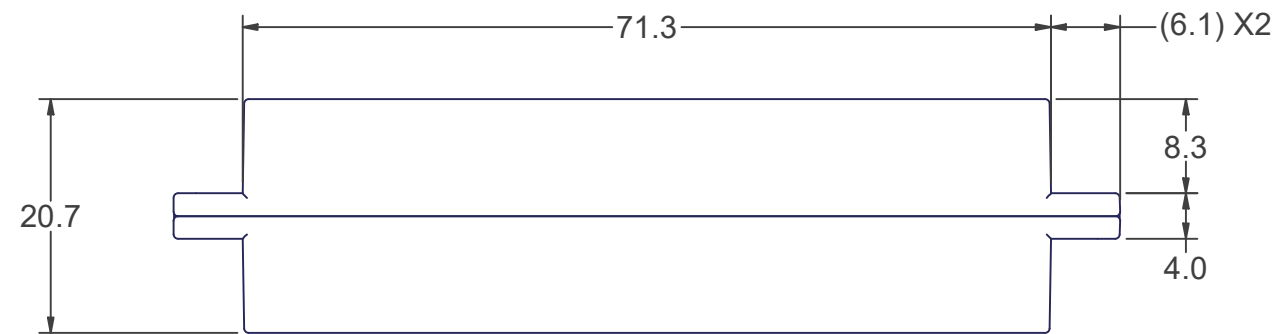
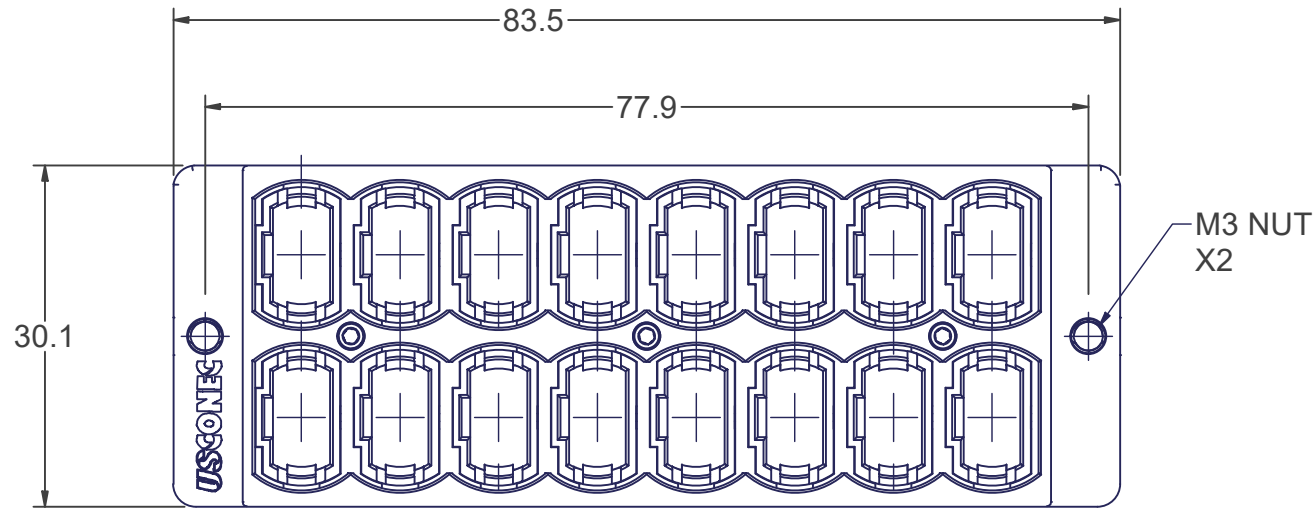
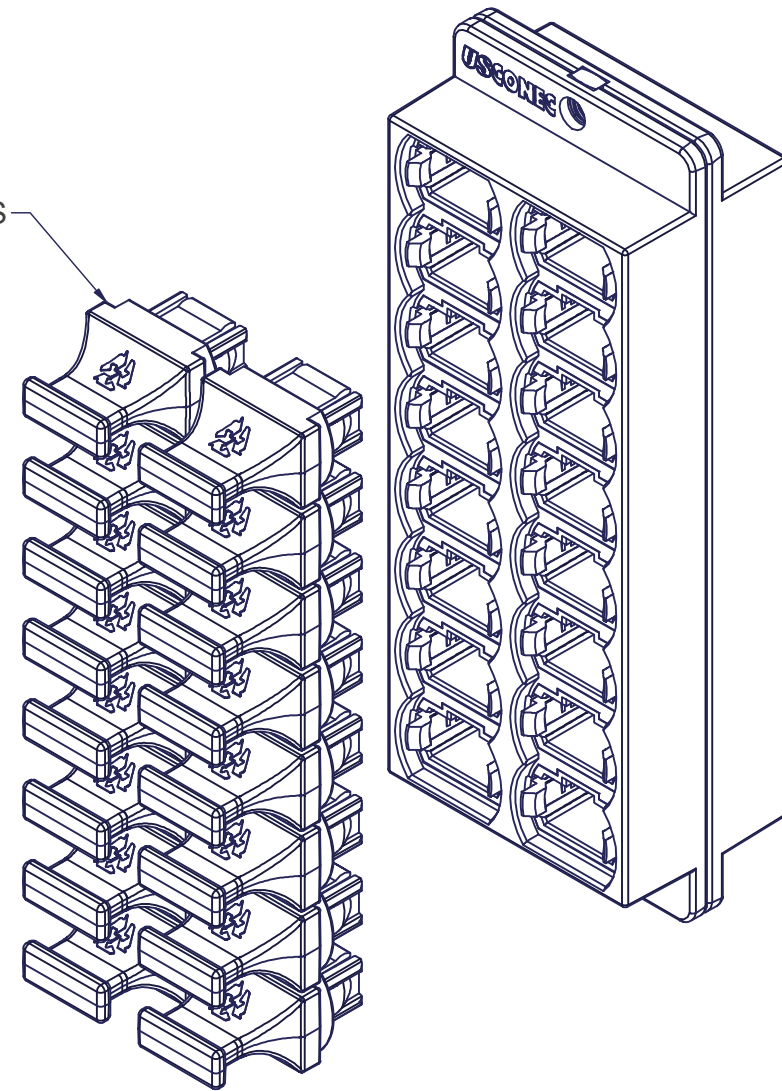


8 7 6 5 4 3 2 1



DUST PLUGS



PART	MATERIAL
ADAPTER HOUSING	THERMOPLASTIC
INNER ADAPTERS	POLYETHERIMIDE
ASSY. SCREWS	STAINLESS STEEL
M3 NUTS	STAINLESS STEEL
DUST PLUGS	POLYCARBONATE

**NOTES:**

- HOUSING COLOR: BLACK
- TIA-604-5 KEYING OPTION 1 (OPPOSED)
- SHIPS WITH 16 DUST PLUGS INSTALLED IN ONE SIDE.

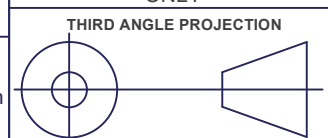
**USCONEC LTD. PROPRIETARY**  
 THIS DOCUMENT AND THE ASSOCIATED DATA CONTAIN RESTRICTED INFORMATION THAT IS USCONEC LTD. PROPERTY. DISCLOSE OR DUPLICATE FOR OTHERS ONLY AS AUTHORIZED BY USCONEC LTD.

**Material: SEE TABLE**

REV.	DATE	DESCRIPTION	ECN
C	4/7/11	INITIAL RELEASE	01239
D1	7/19/19	UPDATED ISO VIEW W/ IMPROVED DUST PLUG	2233-mm
D	7/23/19	RELEASE	
E	3/15/22	REMOVED PANEL THICKNESS CALLOUT	2527-mm
F	11/29/22	MOVED PANEL CUTOUT INFO TO T.N.	

**CUSTOMER DRAWING**

DIMENSIONS FOR REFERENCE ONLY



**METRIC/mm**

▲ DENOTES CRITICAL DIMENSION



Hickory, NC  
 800-769-0944  
 www.usconec.com

**TITLE ADAPTER, 2 x 8, MTP®**

SIZE <b>B</b>	S&M Part No.: 12698	DWG NO. <b>C12698</b>	REV <b>F</b>
SCALE N.T.S.	Drafter <b>B. HENLEY</b>	Date: 11/5/2009	SHEET 1 OF 1

8 7 6 5 4 3 2 1