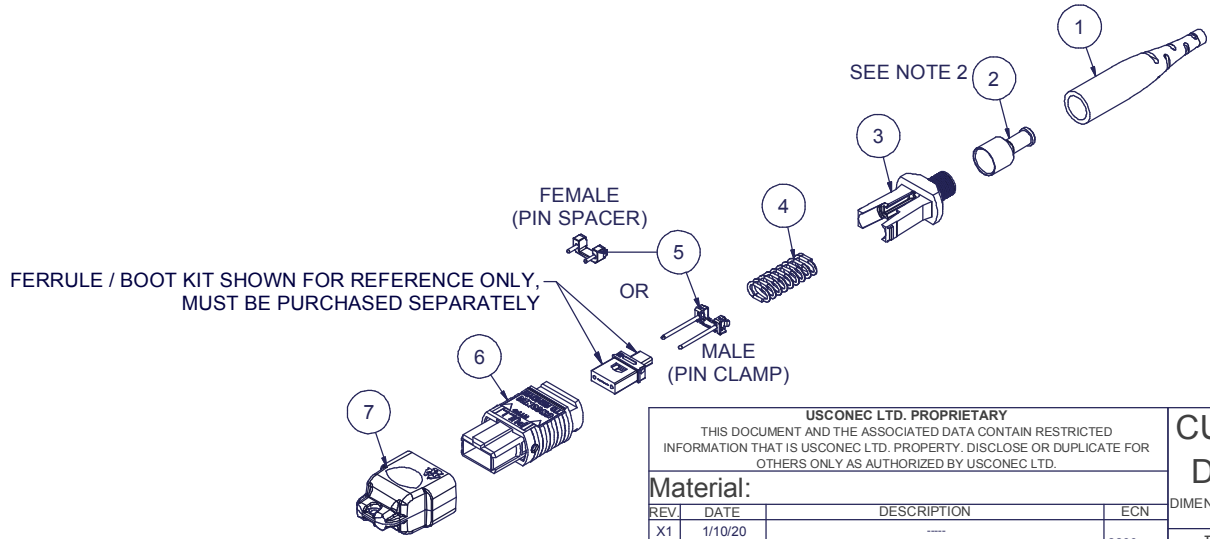


Parts List			
ITEM	DESCRIPTION	PART NUMBER	NOTES
1	STRAIN RELIEF BOOT	14922	
2	CRIMP BAND, 2.0 mm, MTP®, HEAT SHRINK	16424	NOTE 2
3	SPRING PUSH, UNIV., 3.0mm RND	19692	
4	SPRING, UNIVERSAL, 20N	17698	
5	PIN CLAMP or PIN SPACER	SEE KIT TABLE COLUMN A	NOTE 1
6	ASSEMBLY, HOUSING, MTP®	SEE KIT TABLE COLUMN B	
7	DUST CAP, MTP®	17242	

NOTES:

1. MALE CONNECTOR KIT HAS PIN CLAMP ASSEMBLY. FEMALE CONNECTOR KIT HAS FEMALE PIN SPACER.
2. HEAT-SHRINK TUBING RECOMMENDED FOR SECURING CRIMP BAND TO CABLE. HEAT-SHRINK TUBING NOT INCLUDED.

KIT P/N	KIT DESCRIPTION	PERFORMANCE	COLUMN A		COLUMN B	
			PIN CLAMP/SPACER P/N	HSG ASSY P/N	HSG ASSY COLOR	
21931	KIT, MTP®, UNIV., FEMALE, MM, 2.0mm RND, HSF, BEIGE	MM	17795	MTP-A12-11	BEIGE	
21932	KIT, MTP®, UNIV., MALE, MM, 2.0mm RND, HSF, BEIGE	MM	17799	MTP-A12-11	BEIGE	
21933	KIT, MTP®, UNIV., FEMALE, MM, 2.0mm RND, HSF, BLACK	MM	17795	MTP-A12-02	BLACK	
21934	KIT, MTP®, UNIV., MALE, MM, 2.0mm RND, HSF, BLACK	MM	17799	MTP-A12-02	BLACK	
21935	KIT, MTP®, UNIV., FEMALE, MM, 2.0mm RND, HSF, AQUA	MM or MM MTP Elite®	17795	7871	AQUA	
21936	KIT, MTP®, UNIV., MALE, MM, 2.0mm RND, HSF, AQUA	MM	17799	7871	AQUA	
21937	KIT, MTP®, UNIV., MALE, MM MTP Elite®, 2.0mm RND, HSF, AQUA	MM MTP Elite®	17800	7871	AQUA	
21938	KIT, MTP®, UNIV., FEMALE, MM, 2.0mm RND, HSF, MAGENTA	MM or MM MTP Elite®	17795	13949	MAGENTA	
21939	KIT, MTP®, UNIV., MALE, MM, 2.0mm RND, HSF, MAGENTA	MM	17799	13949	MAGENTA	
21940	KIT, MTP®, UNIV., MALE, MM MTP Elite®, 2.0mm RND, HSF, MAGENTA	MM MTP Elite®	17800	13949	MAGENTA	
21941	KIT, MTP®, UNIV., FEMALE, MM, 2.0mm RND, HSF, HEATHER VIOLET	MM or MM MTP Elite®	17795	16693	HEATHER VIOLET	
21942	KIT, MTP®, UNIV., MALE, MM, 2.0mm RND, HSF, HEATHER VIOLET	MM	17799	16693	HEATHER VIOLET	
21943	KIT, MTP®, UNIV., MALE, MM MTP Elite®, 2.0mm RND, HSF, HEATHER VIOLET	MM MTP Elite®	17800	16693	HEATHER VIOLET	
21944	KIT, MTP®, UNIV., FEMALE, MM, 2.0mm RND, HSF, MUNSELL VIOLET	MM or MM MTP Elite®	17795	16791	MUNSELL VIOLET	
21945	KIT, MTP®, UNIV., MALE, MM, 2.0mm RND, HSF, MUNSELL VIOLET	MM	17799	16791	MUNSELL VIOLET	
21946	KIT, MTP®, UNIV., MALE, MM MTP Elite®, 2.0mm RND, HSF, MUNSELL VIOLET	MM MTP Elite®	17800	16791	MUNSELL VIOLET	
21947	KIT, MTP®, UNIV., FEMALE, MM, 2.0mm RND, HSF, LIME	MM or MM MTP Elite®	17795	18829	LIME	
21948	KIT, MTP®, UNIV., MALE, MM, 2.0mm RND, HSF, LIME	MM	17799	18829	LIME	
21949	KIT, MTP®, UNIV., MALE, MM MTP Elite®, 2.0mm RND, HSF, LIME	MM MTP Elite®	17800	18829	LIME	
21950	KIT, MTP®, UNIV., FEMALE, SM, 2.0mm RND, HSF, GREEN	SM	17795	16007	GREEN	
21951	KIT, MTP®, UNIV., MALE, SM, 2.0mm RND, HSF, GREEN	SM	17800	16007	GREEN	
21952	KIT, MTP®, UNIV., FEMALE, SM MTP Elite®, 2.0mm RND, HSF, YELLOW	SM MTP Elite®	17795	16918	YELLOW	
21953	KIT, MTP®, UNIV., MALE, SM MTP Elite®, 2.0mm RND, HSF, YELLOW	SM MTP Elite®	17801	16918	YELLOW	



USCONEC LTD. PROPRIETARY
THIS DOCUMENT AND THE ASSOCIATED DATA CONTAIN RESTRICTED INFORMATION THAT IS USCONEC LTD. PROPERTY. DISCLOSE OR DUPLICATE FOR OTHERS ONLY AS AUTHORIZED BY USCONEC LTD.

Material:

REV.	DATE	DESCRIPTION	ECN
X1	1/10/20	----	2260-mm
A	1/15/20	INITIAL RELEASE	

CUSTOMER DRAWING

DIMENSIONS FOR REFERENCE ONLY

THIRD ANGLE PROJECTION

METRIC/mm

▲ DENOTES CRITICAL DIMENSION

Hickory, NC
800-769-0944
www.usconec.com

USCONEC

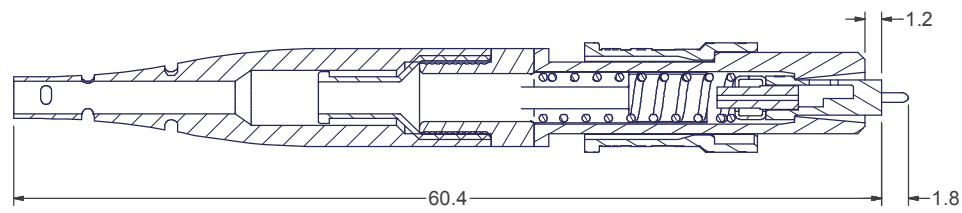
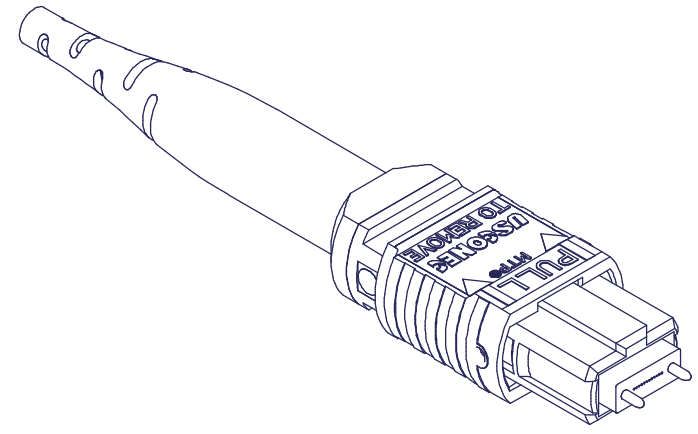
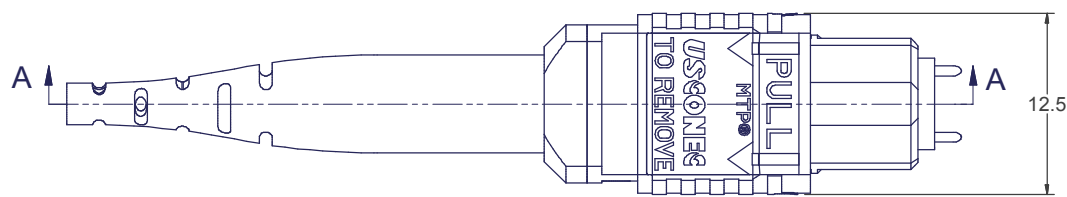
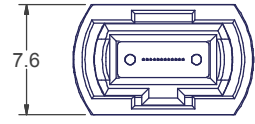
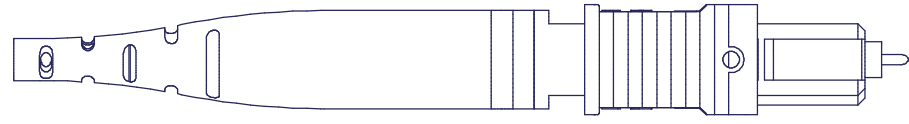
TITLE
KIT, MTP® CONN., UNIV., 1.8 - 2.2 mm ROUND CABLE, HIGH SPRING FORCE

SIZE: A3 S&M Part No.: SEE TABLE DWG NO: C21931 REV: A

SCALE: N.T.S. Drafter: M. McCROSKEY Date: 1/10/2020 SHEET: 1 OF 2

6 5 4 3 2 1

D
C
B
A



SECTION A-A

▲ DENOTES CRITICAL DIMENSION

USCONEC LTD. PROPRIETARY
THIS DOCUMENT AND THE ASSOCIATED DATA CONTAIN RESTRICTED
INFORMATION THAT IS USCONEC LTD. PROPERTY. DISCLOSE OR DUPLICATE FOR
OTHERS ONLY AS AUTHORIZED BY USCONEC LTD.

**CUSTOMER
DRAWING**

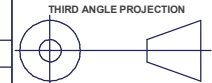


Hickory, NC
800-769-0944
www.usconec.com

Material:

REV.	DATE	DESCRIPTION	ECN

DIMENSIONS FOR REFERENCE
ONLY



TITLE
KIT, MTP® CONN., UNIV., 1.8 - 2.2 mm
ROUND CABLE, HIGH SPRING FORCE

SIZE A3	S&M Part No.: SEE TABLE	DWG NO. C21931	REV A
-------------------	----------------------------	--------------------------	----------

SCALE N.T.S.	Drafter M. McCROSKEY	Date 1/10/2020	SHEET 2 OF 2
-----------------	-------------------------	-------------------	--------------

6 5 4 3 2 1

