

4

3

2

1

Parts List

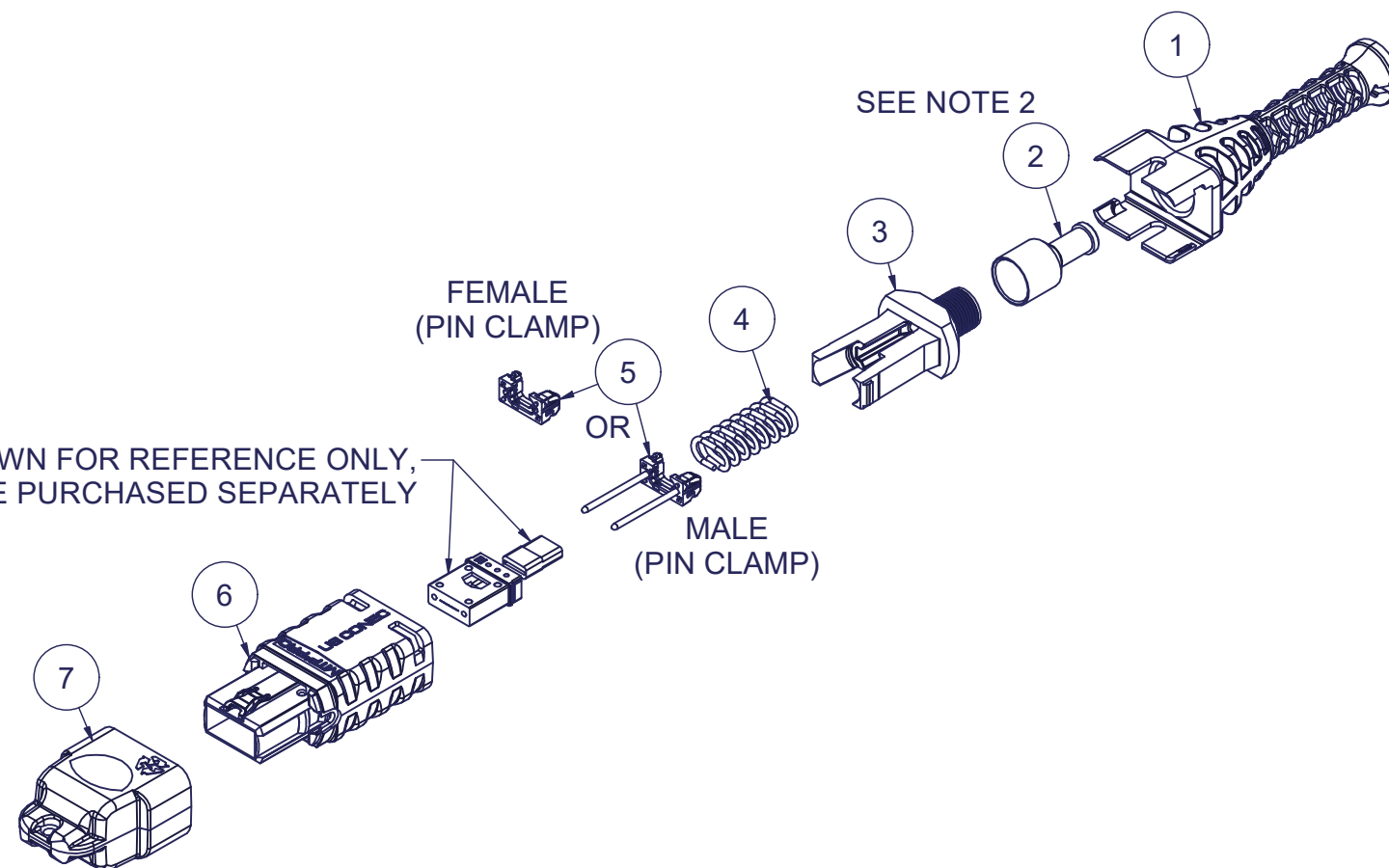
ITEM	DESCRIPTION	PART NUMBER	QTY	NOTES
1	BOOT, PUSH-PULL, MTP® PRO	21442	1	
2	CRIMP BAND, 2.0 mm, MTP®, HEAT SHRINK	16424	1	NOTE 2
3	SPRING PUSH, UNIV., 3.0mm RND	19692	1	
4	SPRING, UNIVERSAL, 20N	22515	1	
5	PIN CLAMP, MTP® PRO	SEE KIT TABLE COLUMN A	1	NOTE 1
6	HOUSING ASSY, MTP® PRO	SEE KIT TABLE COLUMN B	1	
7	DUST CAP, MTP®	17242	1	

NOTES:

1. MALE CONNECTOR KIT HAS MALE PIN CLAMP ASSEMBLY, FEMALE CONNECTOR KIT HAS FEMALE PIN CLAMP ASSEMBLY.
2. HEAT-SHRINK TUBING RECOMMENDED FOR SECURING CRIMP BAND TO CABLE. HEAT-SHRINK TUBING NOT INCLUDED.

KIT P/N	KIT DESCRIPTION	PERFORMANCE	COLUMN A PIN CLAMP P/N	COLUMN B HSG ASSY P/N	HSG COLOR
21767	KIT, MTP® PRO, FEMALE, MM MTP Elite®, 2.0 RND CBL, W/ PUSH-PULL CBL BOOT, HSF, AQUA HSG	MM MTP Elite®	25084	18189	AQUA
21768	KIT, MTP® PRO, MALE, MM MTP Elite®, 2.0 RND CBL, W/ PUSH-PULL CBL BOOT, HSF, AQUA HSG	MM MTP Elite®	25085	18189	AQUA
21769	KIT, MTP® PRO, FEMALE, MM MTP Elite®, 2.0 RND CBL, W/ PUSH-PULL CBL BOOT, HSF, HEATHER VIOLET HSG	MM MTP Elite®	25084	18191	HEATHER VIOLET
21770	KIT, MTP® PRO, MALE, MM MTP Elite®, 2.0 RND CBL, W/ PUSH-PULL CBL BOOT, HSF, HEATHER VIOLET HSG	MM MTP Elite®	25085	18191	HEATHER VIOLET
21771	KIT, MTP® PRO, FEMALE, MM MTP Elite®, 2.0 RND CBL, W/ PUSH-PULL CBL BOOT, HSF, LIME HSG	MM MTP Elite®	25084	19486	LIME
21772	KIT, MTP® PRO, MALE, MM MTP Elite®, 2.0 RND CBL, W/ PUSH-PULL CBL BOOT, HSF, LIME HSG	MM MTP Elite®	25085	19486	LIME
21773	KIT, MTP® PRO, FEMALE, SM MTP Elite®, 2.0 RND CBL, W/ PUSH-PULL CBL BOOT, HSF, GREEN HSG	SM MTP Elite®	25084	18190	GREEN
21774	KIT, MTP® PRO, MALE, SM MTP Elite®, 2.0 RND CBL, W/ PUSH-PULL CBL BOOT, HSF, GREEN HSG	SM MTP Elite®	25087	18190	GREEN

FERRULE / BOOT KIT SHOWN FOR REFERENCE ONLY,
MUST BE PURCHASED SEPARATELY



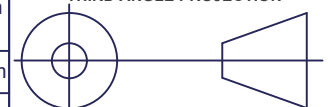
▲ DENOTES CRITICAL DIMENSION

USCONEC LTD. PROPRIETARY			
THIS DOCUMENT AND THE ASSOCIATED DATA CONTAIN RESTRICTED INFORMATION THAT IS USCONEC LTD. PROPERTY. DISCLOSE OR DUPLICATE FOR OTHERS ONLY AS AUTHORIZED BY USCONEC LTD.			
Material:			
REV.	DATE	DESCRIPTION	ECN
X1	1/10/20	---	2265-mm
A	5/5/20	INITIAL RELEASE	
B	4/9/25	PIN CLAMP CHGS: 25084 was 17861; 25085 was 19038; 25087 was 19039; SPRING CHG: 22515 was 17698	2750-mm

CUSTOMER
DRAWING

DIMENSIONS FOR REFERENCE
ONLY

THIRD ANGLE PROJECTION



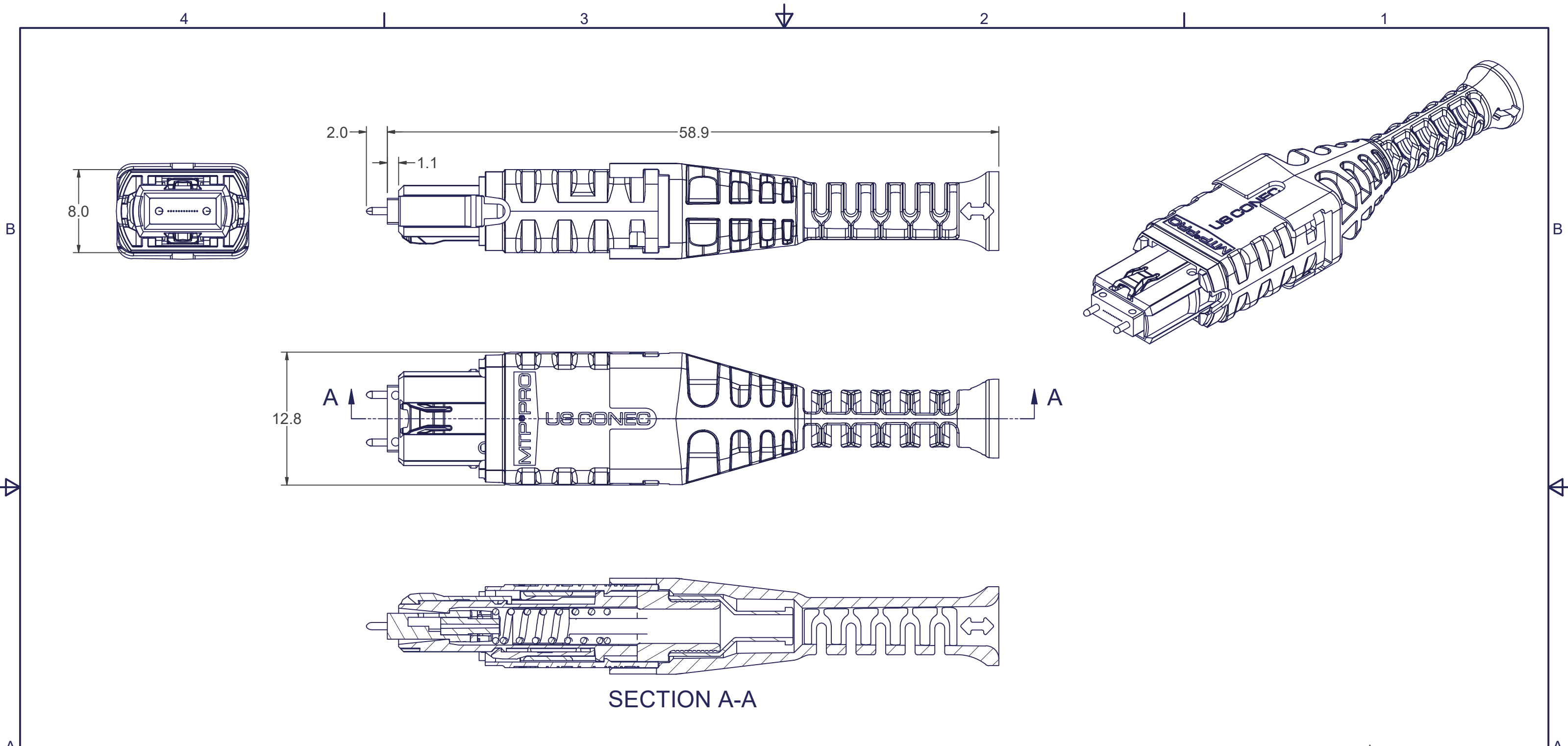
METRIC/mm

USCONEC

Hickory, NC
800-769-0944
www.usconec.com

TITLE
KIT, MTP® PRO CONN., 1.8 - 2.2 mm RND CBL,
PUSH-PULL CBL BOOT, HIGH SPRING FORCE

SIZE B	S&M Part No.: SEE TABLE	DWG NO. C21767	REV B
SCALE N.T.S.	Drafter M.McCROSKEY	Date: 1/10/2020	SHEET 1 OF 2



SECTION A-A

▲ DENOTES CRITICAL DIMENSION

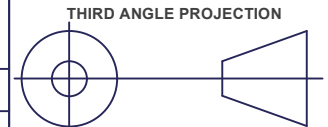
USCONEC LTD. PROPRIETARY
 THIS DOCUMENT AND THE ASSOCIATED DATA CONTAIN RESTRICTED INFORMATION THAT IS USCONEC LTD. PROPERTY. DISCLOSE OR DUPLICATE FOR OTHERS ONLY AS AUTHORIZED BY USCONEC LTD.

Material:

REV.	DATE	DESCRIPTION	ECN
		SEE SHEET 1	

CUSTOMER DRAWING

DIMENSIONS FOR REFERENCE ONLY



METRIC/mm

USCONEC Hickory, NC
 800-769-0944
 www.usconec.com

TITLE
 KIT, MTP® PRO CONN., 1.8 - 2.2 mm RND CBL, PUSH-PULL CBL BOOT, HIGH SPRING FORCE

SIZE B	S&M Part No.: SEE SHEET 1	DWG NO. C21767	REV B
SCALE N.T.S.	Drafter M.McCROSKEY	Date: 1/10/2020	SHEET 2 OF 2