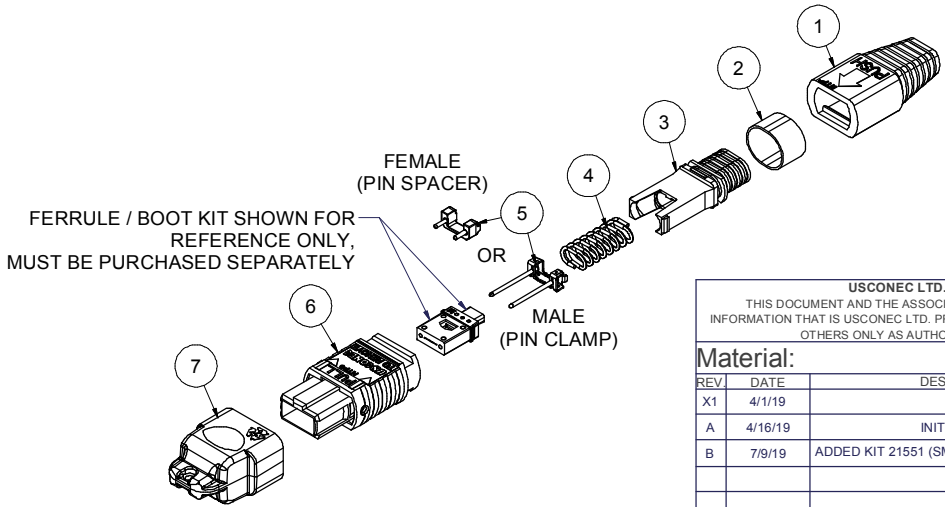


Parts List				
ITEM	DESCRIPTION	PART NO.	QTY	NOTES
1	BOOT, MTP®, 20mm	MTP-012-06	1	
2	CRIMP RING, OVAL	MTP-A12-05	1	
3	SPRING PUSH, UNIVERSAL, OVAL & RIBBON, MTP®	5551	1	
4	SPRING, UNIVERSAL, 9.8N, MTP®	17167	1	
5	PIN CLAMP or PIN SPACER	SEE KIT TABLE COLUMN A	1	NOTE 1
6	ASSEMBLY, HOUSING, MTP®	SEE KIT TABLE COLUMN B	1	
7	DUST CAP, MTP®	17242	1	

NOTES:
 1. MALE CONNECTOR KIT HAS PIN CLAMP ASSEMBLY.
 FEMALE CONNECTOR KIT HAS FEMALE PIN SPACER.

KIT P/N	KIT DESCRIPTION	PERFORMANCE	COLUMN A	COLUMN B	HSG ASSY COLOR
			PIN CLAMP/SPACER P/N	HSG ASSY P/N	
20067	KIT, MTP®, UNIVERSAL, FEMALE, MM, OVAL, BEIGE	MM	17795	MTP-A12-11	BEIGE
20068	KIT, MTP®, UNIVERSAL, MALE, MM, OVAL, BEIGE	MM	17799	MTP-A12-11	BEIGE
20069	KIT, MTP®, UNIVERSAL, FEMALE, MM, OVAL, BLACK	MM	17795	MTP-A12-02	BLACK
20070	KIT, MTP®, UNIVERSAL, MALE, MM, OVAL, BLACK	MM	17799	MTP-A12-02	BLACK
20071	KIT, MTP®, UNIVERSAL, FEMALE, MM, OVAL, AQUA	MM or MM MTP Elite®	17795	7871	AQUA
20072	KIT, MTP®, UNIVERSAL, MALE, MM, OVAL, AQUA	MM	17799	7871	AQUA
20073	KIT, MTP®, UNIVERSAL, MALE, MM MTP Elite®, OVAL, AQUA	MM MTP Elite®	17800	7871	AQUA
20074	KIT, MTP®, UNIVERSAL, FEMALE, MM, OVAL, MAGENTA	MM or MM MTP Elite®	17795	13949	MAGENTA
20075	KIT, MTP®, UNIVERSAL, MALE, MM, OVAL, MAGENTA	MM	17799	13949	MAGENTA
20076	KIT, MTP®, UNIVERSAL, MALE, MM MTP Elite®, OVAL, MAGENTA	MM MTP Elite®	17800	13949	MAGENTA
20077	KIT, MTP®, UNIVERSAL, FEMALE, MM, OVAL, HEATHER VIOLET	MM or MM MTP Elite®	17795	16693	HEATHER VIOLET
20078	KIT, MTP®, UNIVERSAL, MALE, MM, OVAL, HEATHER VIOLET	MM	17799	16693	HEATHER VIOLET
20079	KIT, MTP®, UNIVERSAL, MALE, MM MTP Elite®, OVAL, HEATHER VIOLET	MM MTP Elite®	17800	16693	HEATHER VIOLET
20080	KIT, MTP®, UNIVERSAL, FEMALE, MM, OVAL, MUNSSELL VIOLET	MM or MM MTP Elite®	17795	16791	MUNSSELL VIOLET
20081	KIT, MTP®, UNIVERSAL, MALE, MM, OVAL, MUNSSELL VIOLET	MM	17799	16791	MUNSSELL VIOLET
20082	KIT, MTP®, UNIVERSAL, MALE, MM MTP Elite®, OVAL, MUNSSELL VIOLET	MM MTP Elite®	17800	16791	MUNSSELL VIOLET
20083	KIT, MTP®, UNIVERSAL, FEMALE, MM, OVAL, LIME	MM or MM MTP Elite®	17795	18829	LIME
20084	KIT, MTP®, UNIVERSAL, MALE, MM, OVAL, LIME	MM	17799	18829	LIME
20085	KIT, MTP®, UNIVERSAL, MALE, MM MTP Elite®, OVAL, LIME	MM MTP Elite®	17800	18829	LIME
20086	KIT, MTP®, UNIVERSAL, FEMALE, SM, OVAL, GREEN	SM	17795	16007	GREEN
20087	KIT, MTP®, UNIVERSAL, MALE, SM, OVAL, GREEN	SM	17800	16007	GREEN
20088	KIT, MTP®, UNIVERSAL, FEMALE, SM MTP Elite®, OVAL, YELLOW	SM MTP Elite®	17795	16918	YELLOW
20089	KIT, MTP®, UNIVERSAL, MALE, SM MTP Elite®, OVAL, YELLOW	SM MTP Elite®	17801	16918	YELLOW
21551	KIT, MTP®, UNIVERSAL, MALE, SM MTP Elite®, OVAL, GREEN	SM MTP Elite®	17801	16007	GREEN



USCONEC LTD. PROPRIETARY
 THIS DOCUMENT AND THE ASSOCIATED DATA CONTAIN RESTRICTED INFORMATION THAT IS USCONEC LTD. PROPERTY. DISCLOSE OR DUPLICATE FOR OTHERS ONLY AS AUTHORIZED BY USCONEC LTD.

Material:

REV	DATE	DESCRIPTION	ECN
X1	4/1/19	---	
A	4/16/19	INITIAL RELEASE	2206-mm
B	7/9/19	ADDED KIT 21551 (SME W/ GREEN HSG) TO TABLE	

CUSTOMER DRAWING

DIMENSIONS FOR REFERENCE ONLY

THIRD ANGLE PROJECTION

METRIC/mm

USCONEC Hickory, NC
 800-769-0944
 www.usconec.com

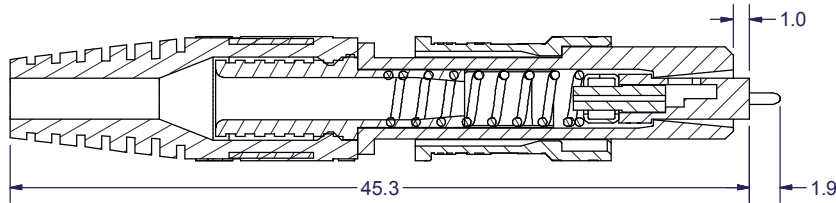
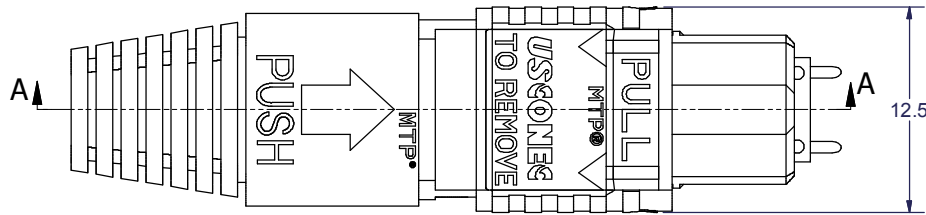
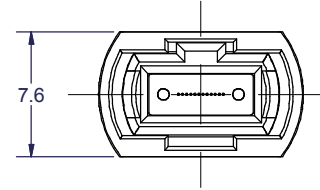
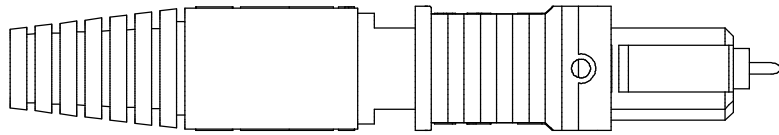
TITLE
 KIT, MTP® CONNECTOR, UNIVERSAL, OVAL JACKETED CABLE

SIZE S&M Part No.: SEE TABLE DWG NO. **C20067** REV B

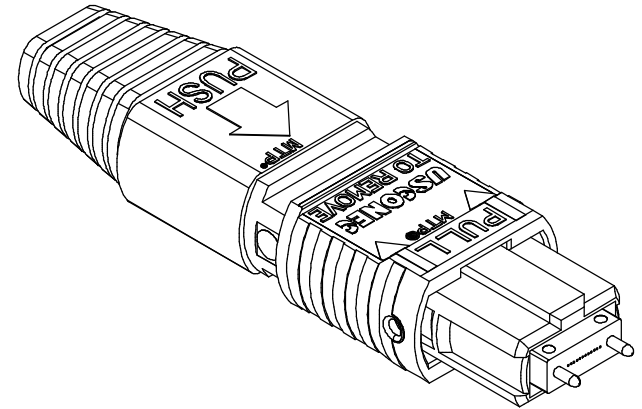
SCALE N.T.S. Drafter M.McCROSKEY Date: 4/1/2019 SHEET 1 OF 2

▲ DENOTES CRITICAL DIMENSION

4 | 3 | 2 | 1



SECTION A-A



USCONEC LTD. PROPRIETARY
 THIS DOCUMENT AND THE ASSOCIATED DATA CONTAIN RESTRICTED
 INFORMATION THAT IS USCONEC LTD. PROPERTY. DISCLOSE OR DUPLICATE FOR
 OTHERS ONLY AS AUTHORIZED BY USCONEC LTD.

Material:

REV	DATE	DESCRIPTION	ECN

CUSTOMER DRAWING



Hickory, NC
 800-769-0944
www.usconec.com

DIMENSIONS FOR REFERENCE ONLY

TITLE
 KIT, MTP® CONNECTOR, UNIVERSAL,
 OVAL JACKETED CABLE



SIZE	S&M Part No.:	DWG NO.	REV
B	SEE TABLE	C20067	B

METRIC/mm

SCALE	Drafter	Date:	SHEET	OF
N.T.S.	M.McCROSKEY	4/1/2019	2	2

▲ DENOTES CRITICAL DIMENSION

4 | 3 | 2 | 1