



Introduction of Bellution Networks



Sep. 2010



 Vision

Always On, wherever you are..



Mission Statement :

*“Wire-Wireless Solution Provider
for
Broadband Convergence Network”*

 Core Competence

People & Leadership

Management Team
R&D
Marketing

Technologies

IP (LAN Switch, Router, ...)
Wireless (D-M/W, 802.11x, ...)
Voice (Exchange, PBX, Key Phone, ...)
Terminal (STB, Cable Modem, xDSL, ...)
ASIC (SONET, SDH, ATM, ...)

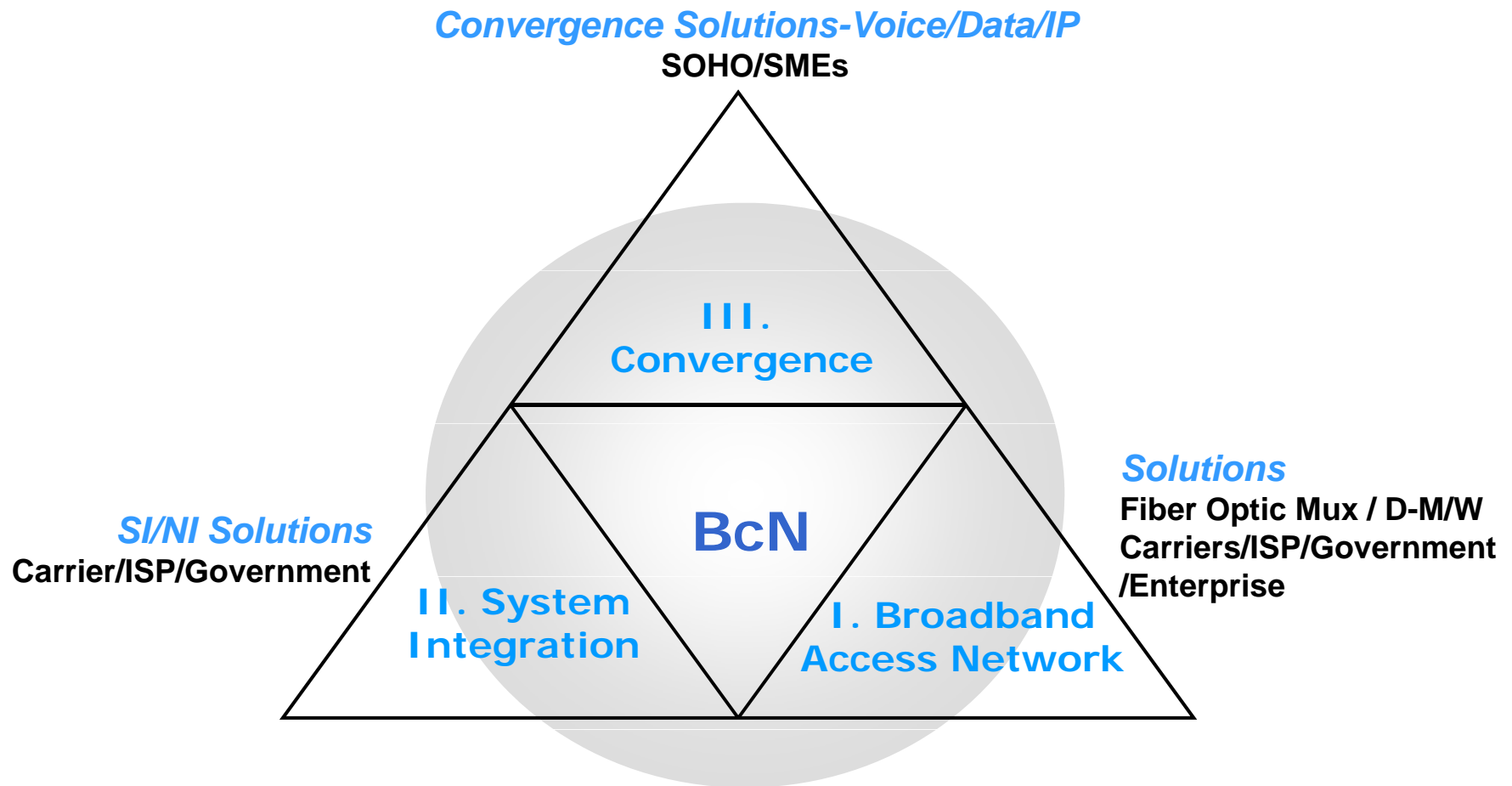
Experiences

Carrier Business (KT, Hanaro, Dacom, ...)
Solution Business (Railroad Project, TRS Project, ...)



 Business Fields

3 Different SBUs(Strategic Business Units) with Unique Solutions





Bellution Co., Ltd.

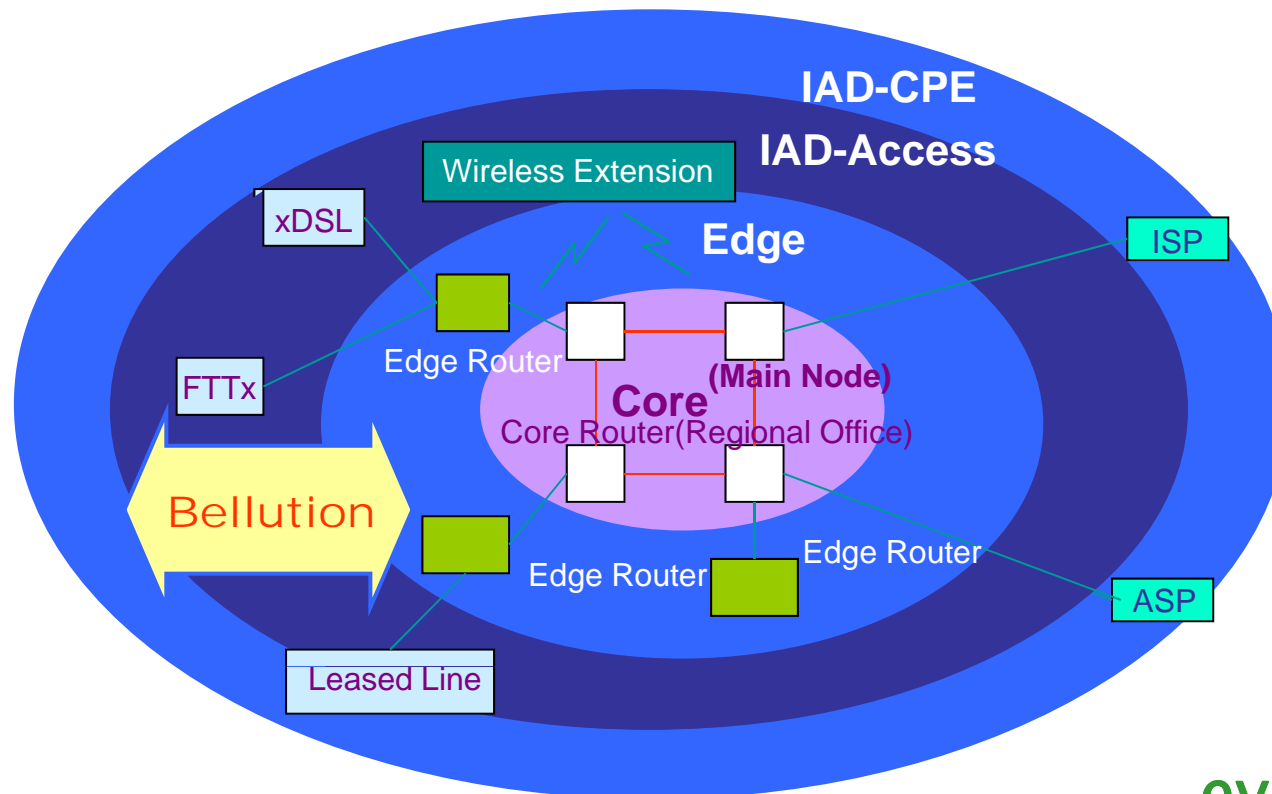
I. Products Solutions for Broadband Access Networks



 Target Market

Wire-Wireless Solutions for Access Networks

- Increased use of the internet and accumulative growth in data communications worldwide
- Driving demand for wire-wireless solutions in Access Networks





Trans Series

- ▶ Unique Product Line for **CLE Positioned in High End IAD**



1155E

STM-1(OC-3) Optical Transmission System



RF-Link Plus

50Mbps Wireless LAN Bridge

Product Highlights

- ▶ Ideal Solutions for Network Service Providers
- ▶ Fulfilling High Speed Service to Unreachable area by Wired Network
- ▶ Affordable Price with Great Flexibilities
- ▶ Full Functioning Network can be implemented

 **1155E: STM-1/OC-3**

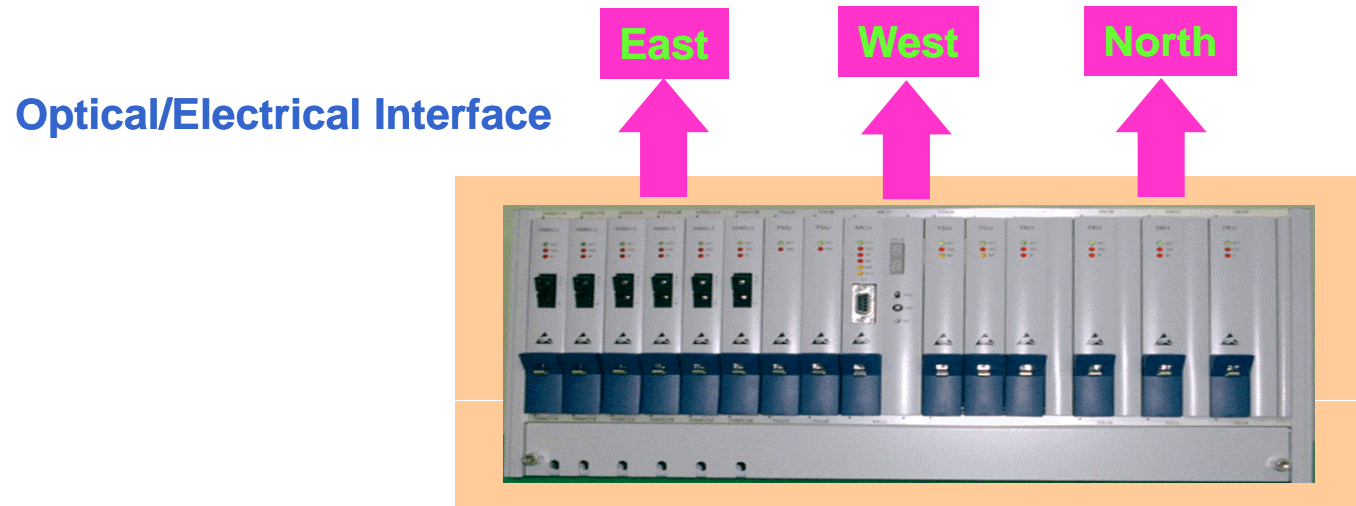
▶ **Optical Transmission System (ENHANCED)**



Tributary Signal	Ports / Unit	Units / Sys	Max. Ports
DS1/E1	21	3	63
DS3/E3	1	3	3
E4	1	1	1
10/100 Base-Tx	4	3	12
100 Base-Fx	1	3	3

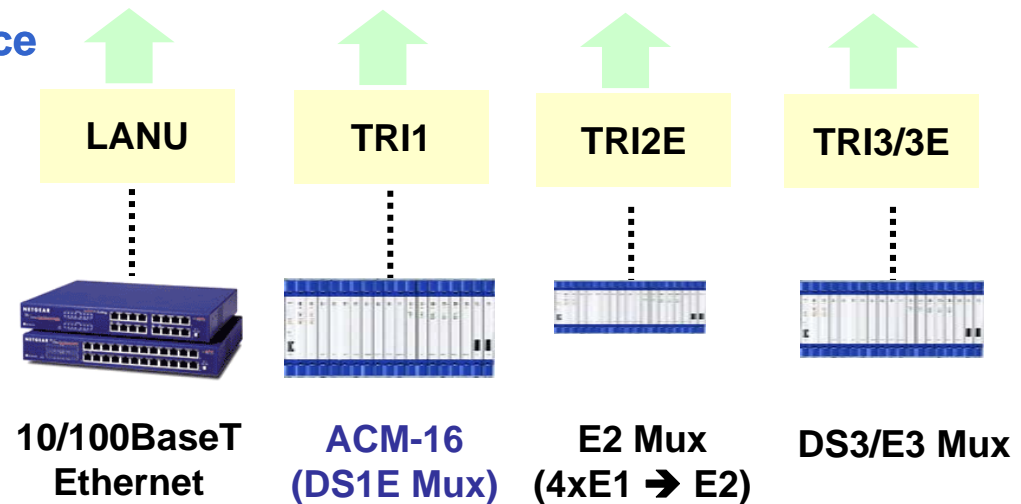
- **Compact & Modular Design for Maximum Flexibility**
- **Multiple Tributary Interfaces with Higher Capacities:**
*63xDS1/E1, 3xDS3/E3, 1xE4,
 3x1port 100Base-Fx, 3x4port 10/100Base-T*
- **Applicable in Various Network Topologies**
TM, Linear-ADM, Ring-ADM and Hub-Ring
- **Shared VC3 in the Network(Optional Feature)**
*Multiple 100Base-Tx on a Single VC3
 → Low Capacity Ethernet Application*
- **EOW and DCC processing**
- **Full Remote Management through Network Manager**
NMS/EMS-GUI via Ethernet, WAN Interface

- 1155H: STM-1/OC-3
 - Optical Transmission System (HUB)



Electrical Interface

Tributary Signal	Ports / Unit	Units / Sys	Max. Ports
DS1/E1	21	6(1:1)	63
DS3/E3	1	3(1+1)	3
10/100 Base-Tx	1	3	3



 **Access-Point Series**

- ▶ Unique Product Line for Wireless LAN Interface Terminals



DH-CAP100
Cable Modem &
Wireless Access
Point



i-shot 10x0
Wireless LAN Based
Card Checker



i-shot 2000
AP Repeater & Switch

Specifications

- ▶ IEEE 802.11a/b/g
- ▶ 2.4GHz frequency band (11b-11Mbps / 11g-54Mbps)
- ▶ 5GHz frequency band (11a – 54Mbps /108Mbps)



II. SI/NI Solutions

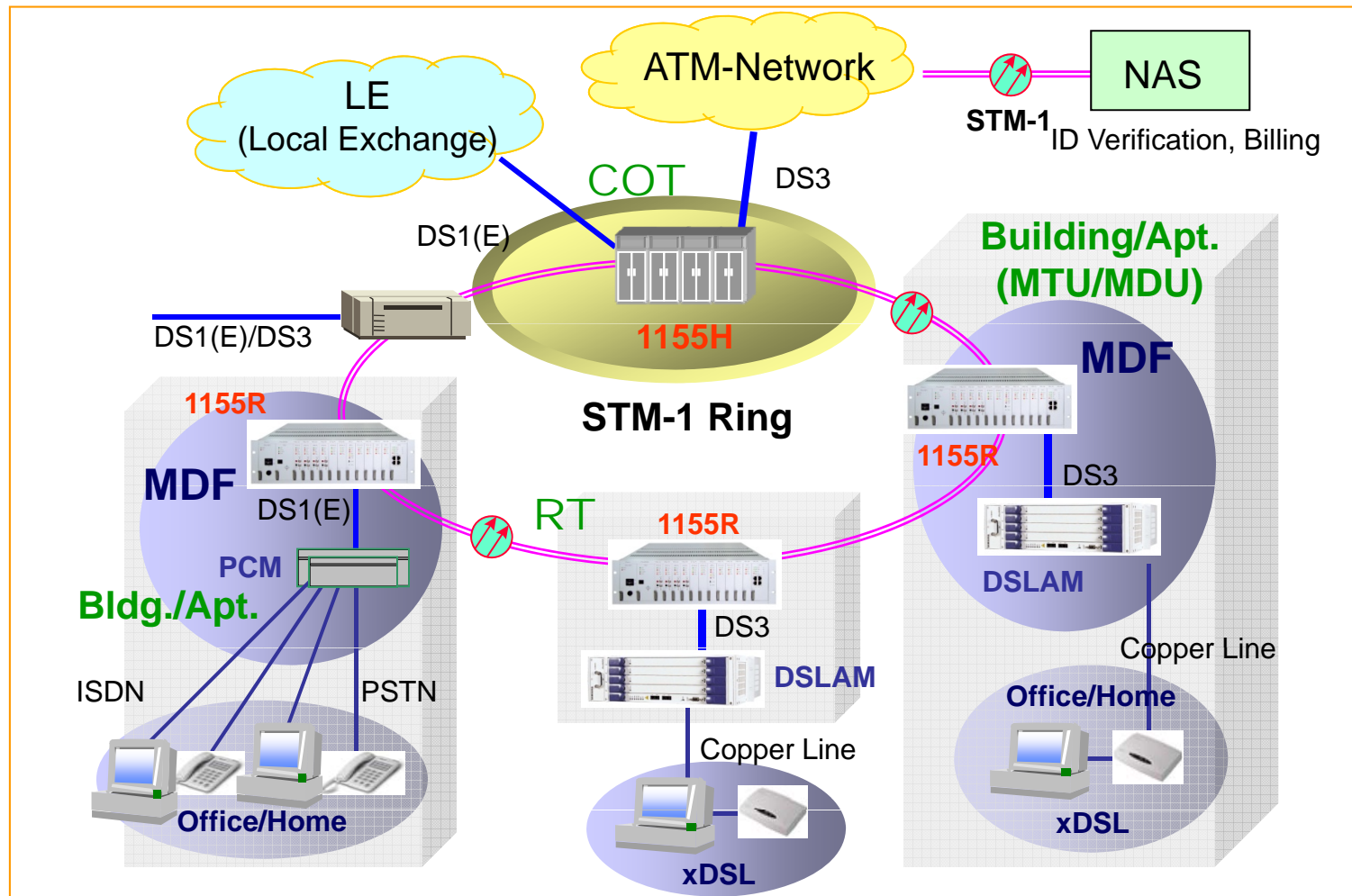
Bellution Co., Ltd.





Broadband Network Solutions

(Major Korean Carriers & ISPs-KT, Dacom, Powercom, Hanaro Telco...)

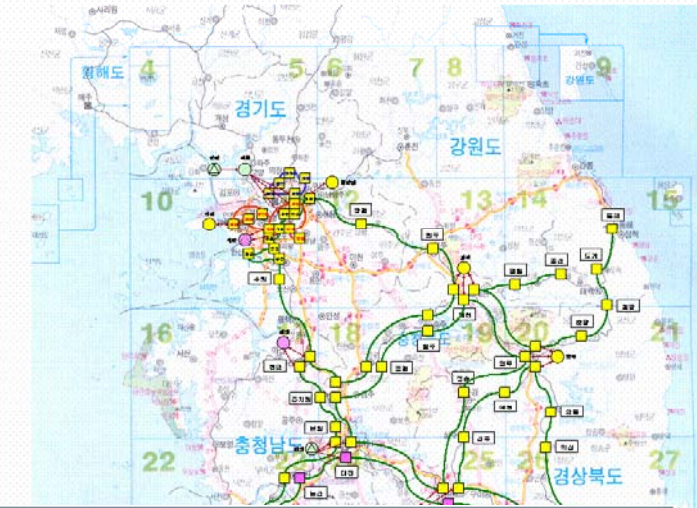




**Optical
Telecommunication
Network**

(Korean National Railway)

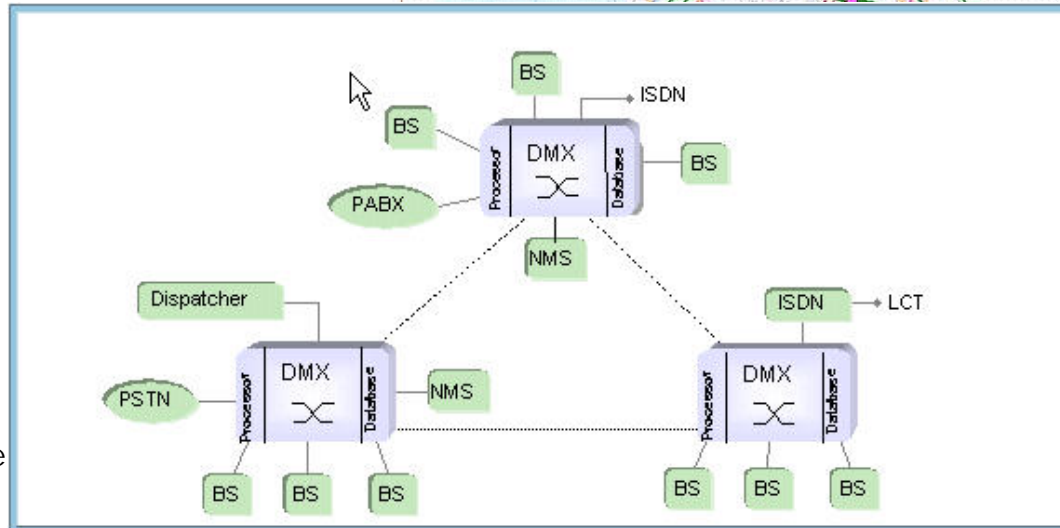
Korean National Railroad Optical Telecommunication Network Map



**TRS(Trunked
Radio System)**

(Dacom: CLEC & ISP)

DMX: Digital Mobile eXchange





Bellution Co., Ltd.

III. Convergence Solutions





Solution Portfolio

Digital Premises

EVP Series
Mini PBX
VMS

EIP Series
Voice + Data
VoIP

Digital Home

Home Media G/W

All-in-One

- ✓IP-STB(VOD-MPEG4),
- ✓Data(WLAN, VPN, Router),
- ✓Video Conference (Web Cam+VoIP)

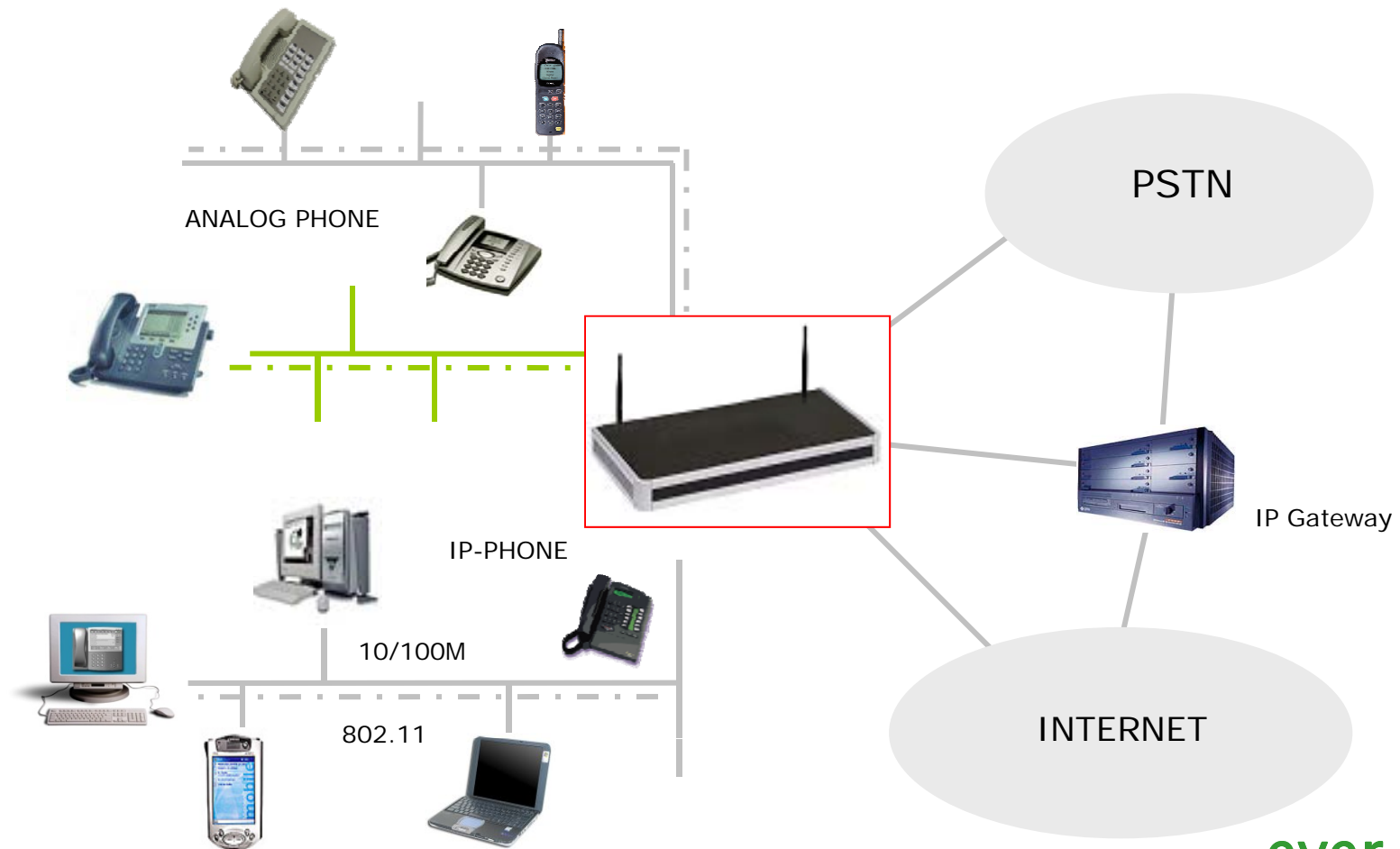
IP-STB

Convergence Business



Digital Premises-EIP Series

- Service Diagram*





Company Profile

Bellution Co., Ltd.



 **Company Overview**

- ❖ **Founded in May, 2005**
- ❖ **Headquarter – Anyang (10km from Seoul), South Korea**
- ❖ **Count Head – 30 Employees**
- ❖ **Sale Record –6.42 M\$ as of '2010**
- ❖ **Solution (Focused on Broadband Convergence Networks)**
 - **IP Convergence OneBox Solutions**
 - **Wireless LAN (802.11x)**
 - **xDSL Terminal and Systems**
 - **Fiber Optic Systems**
 - **6~18/80GHz Digital Microwave Systems**
 - **Digital TRS (TETRA)**

Always **on...** wherever you are

*Always
on,
wherever
you are..*



Thank You!

www.Bellution.com
Tel: +82-31-456-0951