

**NOTES:**

1. MINOR SURFACE VARIATIONS THAT DO NOT AFFECT OVERALL FIT, FORM, AND FUNCTION OF PART ARE ACCEPTABLE.
2. CRITICAL DIMENSION INSPECTION RATE = 6.5 AQL.
3. VERTICAL LATCH FORCE 0.3 lbs TO 2.0 lbs WHEN USING RECOMMENDED PRIZM INTERFACE, C13275
4. VERTICAL DELATCH FORCE 0.6 lbs TO 2.0 lbs WHEN USING RECOMMENDED PRIZM INTERFACE, C13275
5. COLOR: BLACK

▲ DENOTES CRITICAL DIMENSION

<b>USCONEC LTD. PROPRIETARY</b> THIS DOCUMENT AND THE ASSOCIATED DATA CONTAIN RESTRICTED INFORMATION THAT IS USCONEC LTD. PROPERTY. DISCLOSE OR DUPLICATE FOR OTHERS ONLY AS AUTHORIZED BY USCONEC LTD.			
<b>Material:</b>		PEI - MAT'L SPEC #C12606	
REV/	DATE	DESCRIPTION	ECN
C	9/16/10	ADDED NOTES 3 & 4 AND SHEET 2	01054
D1	7/14/11	CHG. LATCH / DELATCH FORCES FROM N's TO LB's	01338
D	8/04/11	RELEASE	01338
E1	2/8/2012	REMOVE PARTS LIST, SHT 2	01418
E	2/8/2012	RELEASE	01418

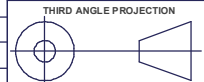
**CUSTOMER DRAWING**



Hickory, NC  
800-769-0944  
[www.usconec.com](http://www.usconec.com)

DIMENSIONS FOR REFERENCE ONLY

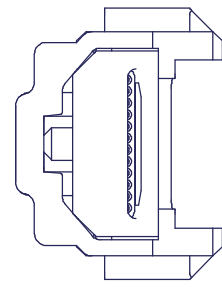
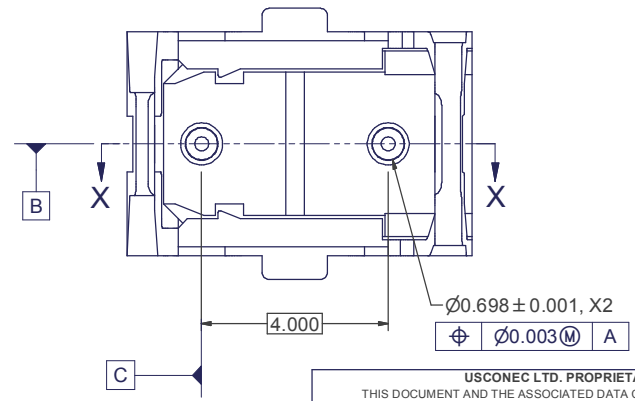
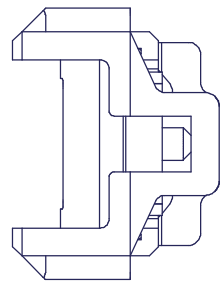
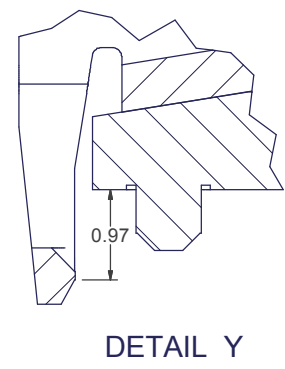
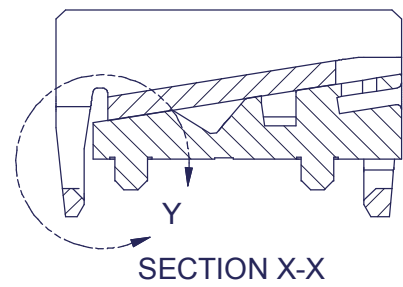
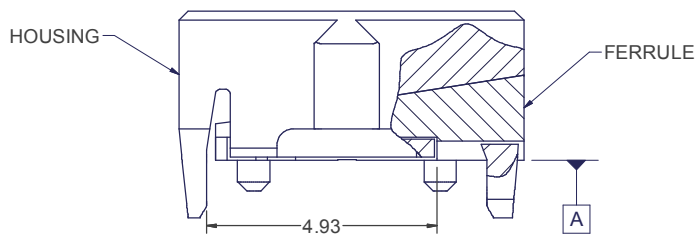
**TITLE**  
HOUSING, CONNECTOR,  
PRIZM® LightTurn®



SIZE	S&M Part No.:	DWG NO.	REV
B	9771	C9771	E
SCALE	Drafter	Date:	SHEET
N.T.S.	B. HENLEY	10/14/2008	1 OF 2

**METRIC/mm**

# CONNECTOR HOUSING ASSEMBLED WITH PRIZM® LightTurn® FERRULE (Ferrule shown for reference only)



▲ DENOTES CRITICAL DIMENSION

USCONEC LTD. PROPRIETARY  
THIS DOCUMENT AND THE ASSOCIATED DATA CONTAIN RESTRICTED INFORMATION THAT IS USCONEC LTD. PROPERTY. DISCLOSE OR DUPLICATE FOR OTHERS ONLY AS AUTHORIZED BY USCONEC LTD.

Material:

REV	DATE	DESCRIPTION	ECN
		SEE SHEET 1	

**CUSTOMER DRAWING**

DIMENSIONS FOR REFERENCE ONLY

THIRD ANGLE PROJECTION

**METRIC/mm**

**USCONEC** Hickory, NC  
800-769-0944  
[www.usconec.com](http://www.usconec.com)

TITLE: **HOUSING, CONNECTOR, PRIZM® LightTurn®**

SIZE: B	S&M Part No.: N/A	DWG NO: <b>C9771</b>	REV: E
SCALE: N.T.S.	Drafter: B. HENLEY	Date: 10/14/2008	SHEET 2 OF 2