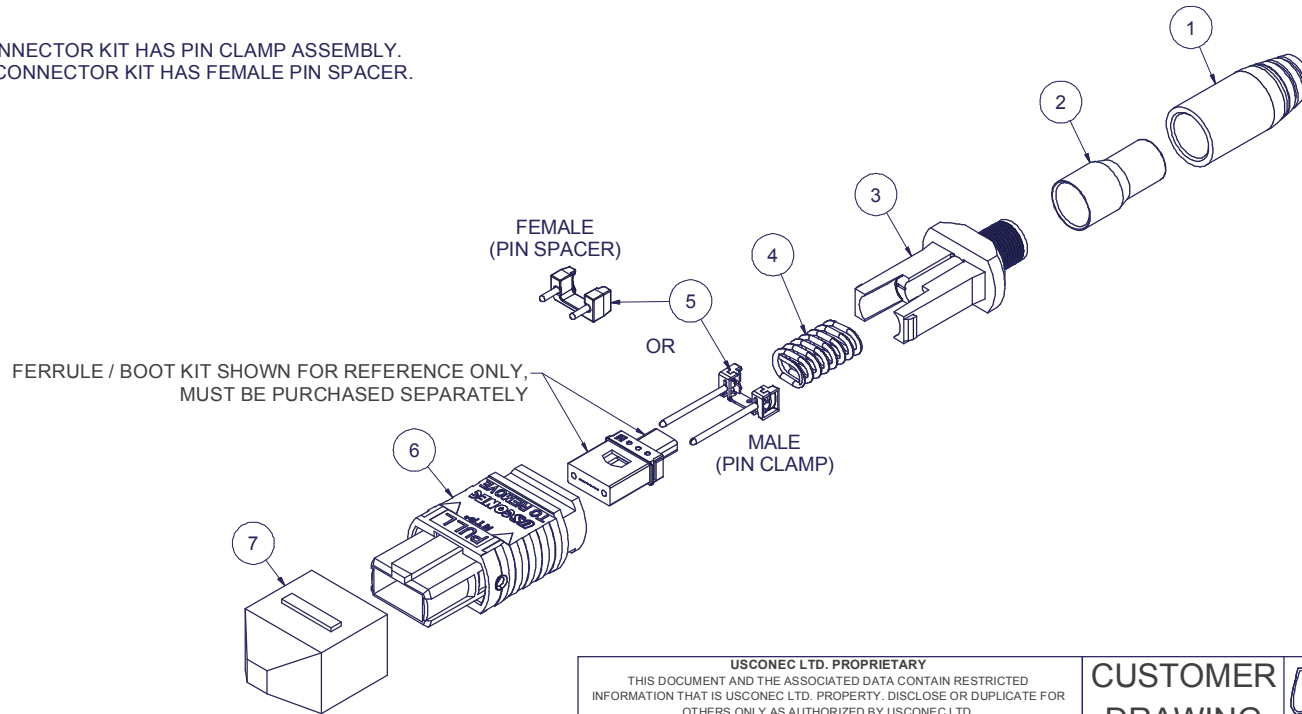


Parts List				
ITEM	DESCRIPTION	PART NUMBER	QTY	NOTES
1	3.0 SHORT BOOT	16457	1	
2	CRIMP BAND, 3.0 ROUND, MTP®	15633	1	
3	SPRING PUSH	13527	1	
4	SPRING, MTP®, HIGH FORCE	12501	1	
5	PIN CLAMP or PIN SPACER	SEE KIT TABLE COLUMN A	1	NOTE 1
6	HOUSING ASSY	SEE KIT TABLE COLUMN B	1	
7	PROTECTIVE CAP	MTP-012-01	1	

KIT P/N	KIT DESCRIPTION	PERFORMANCE	COLUMN A		COLUMN B	HSG ASSY COLOR
			PIN CLAMP/SPACER PN	HSG ASSY PN	HSG ASSY PN	
16469	KIT, MTP®, MALE, MM MTP Elite®, 3.0, RND, SHORT BOOT, HSF, AQUA	MM or MM MTP Elite®	16742	7871		AQUA
16470	KIT, MTP®, FEMALE, MM, 3.0, RND, SHORT BOOT, HSF, BEIGE	MM	12918		MTP-A12-11	BEIGE
16471	KIT, MTP®, MALE, MM, 3.0, RND, SHORT BOOT, HSF, BEIGE	MM	16741		MTP-A12-11	BEIGE
16472	KIT, MTP®, FEMALE, MM, 3.0, RND, SHORT BOOT, HSF, BLACK	MM	12918		MTP-A12-02	BLACK
16473	KIT, MTP®, MALE, MM, 3.0, RND, SHORT BOOT, HSF, BLACK	MM	16741		MTP-A12-02	BLACK
16474	KIT, MTP®, FEMALE, MM, 3.0, RND, SHORT BOOT, HSF, AQUA	MM or MM MTP Elite®	12918		7871	AQUA
16475	KIT, MTP®, MALE, MM, 3.0, RND, SHORT BOOT, HSF, AQUA	MM	16741		7871	AQUA

**NOTES:**

1. MALE CONNECTOR KIT HAS PIN CLAMP ASSEMBLY.  
FEMALE CONNECTOR KIT HAS FEMALE PIN SPACER.



USCONEC LTD. PROPRIETARY  
THIS DOCUMENT AND THE ASSOCIATED DATA CONTAIN RESTRICTED  
INFORMATION THAT IS USCONEC LTD. PROPERTY. DISCLOSE OR DUPLICATE FOR  
OTHERS ONLY AS AUTHORIZED BY USCONEC LTD.

**Material:**

REV	DATE	DESCRIPTION	ECN
X1	11/12/14	-	1748-mm
---	4/22/15	ADDED PERFORMANCE COLUMN IN TABLE	1748-mm
A	4/22/15	INITIAL RELEASE	1748-mm
B1	4/15/16	CRIMP BAND CHG. P/N 15633 W 8043; MALE PIN CLAMP CHG. 16742 W 13376 & 13743 W 13377; UPDATED TITLE FORMAT; DIM CORR. SHT 2. 43.0 was 43.2	1910-mm
B	5/4/16	RELEASE	1910-mm

**CUSTOMER DRAWING**

DIMENSIONS FOR REFERENCE ONLY

THIRD ANGLE PROJECTION

**METRIC/mm**

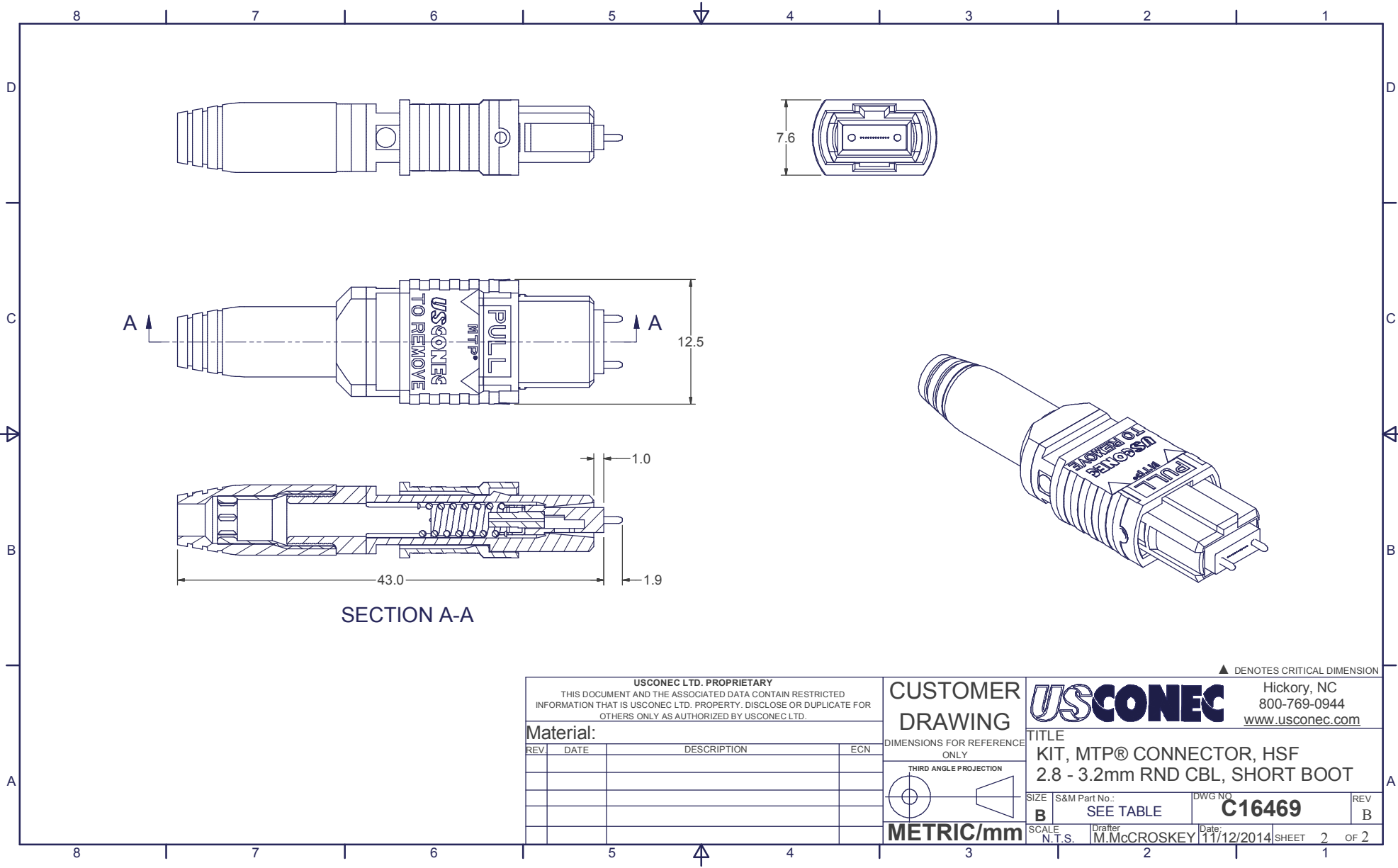
▲ DENOTES CRITICAL DIMENSION

Hickory, NC  
800-769-0944  
[www.usconec.com](http://www.usconec.com)

**USCONEC**

TITLE  
KIT, MTP® CONNECTOR, HSF  
2.8 - 3.2mm RND CBL, SHORT BOOT

SIZE	S&M Part No.:	DWG NO.	REV
B	SEE TABLE	<b>C16469</b>	B
SCALE	Drafter	Date:	SHEET
N.T.S.	M.McCROSKEY	11/12/2014	1 OF 2



SECTION A-A

USCONEC LTD. PROPRIETARY  
 THIS DOCUMENT AND THE ASSOCIATED DATA CONTAIN RESTRICTED  
 INFORMATION THAT IS USCONEC LTD. PROPERTY. DISCLOSE OR DUPLICATE FOR  
 OTHERS ONLY AS AUTHORIZED BY USCONEC LTD.

Material:

REV	DATE	DESCRIPTION	ECN

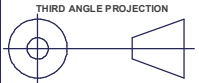
CUSTOMER DRAWING



Hickory, NC  
 800-769-0944  
[www.usconec.com](http://www.usconec.com)

DIMENSIONS FOR REFERENCE ONLY

TITLE  
 KIT, MTP® CONNECTOR, HSF  
 2.8 - 3.2mm RND CBL, SHORT BOOT



SIZE	S&M Part No.:	DWG NO.	REV
B	SEE TABLE	C16469	B

METRIC/mm

SCALE	Drafter	Date:	SHEET	OF
N.T.S.	M.McCROSKEY	11/12/2014	2	2

▲ DENOTES CRITICAL DIMENSION